



Table Runner Set

Let's Partea

by Satin Moon Designs

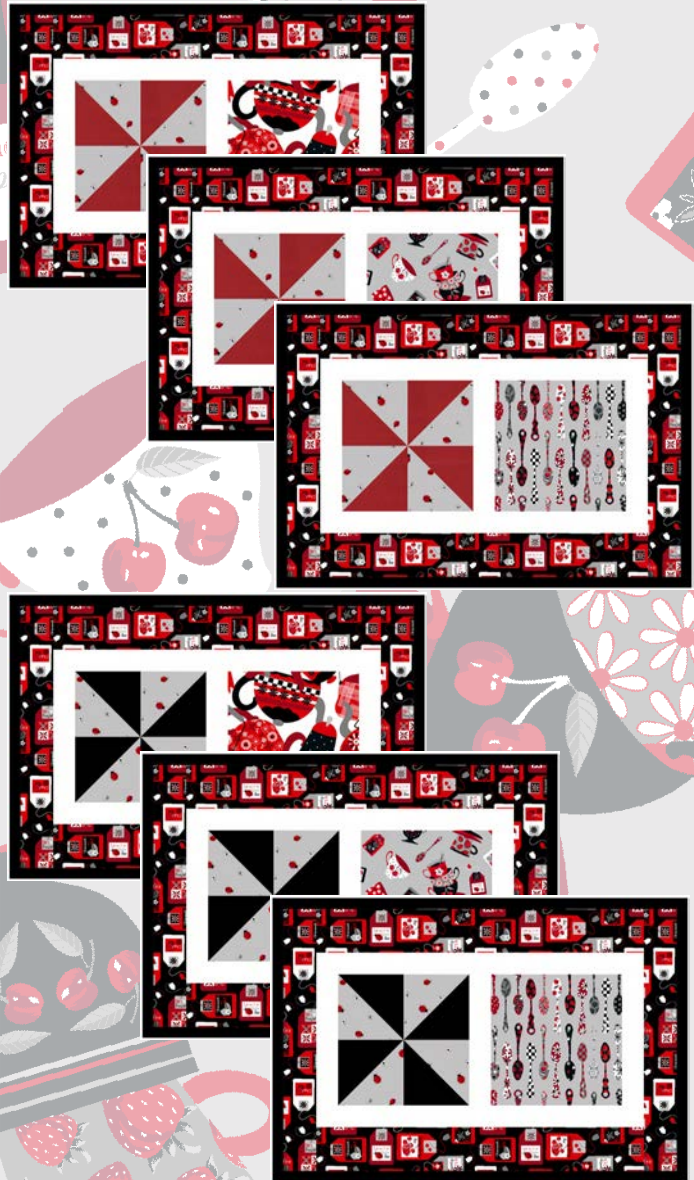


Table Runner Set design by Denise Russell.

Table Runner: 27" x 58"; Placemats: 19" x 13"

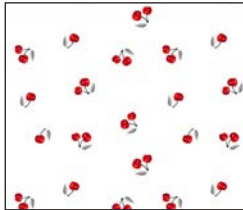
Skill Level: Advanced Beginner

Blank Quilting Corporation
49 West 37th Street ♦ New York, NY 10018
Tel: 800-294-9495 ♦ Fax: 212-679-4578
www.blankquilting.net



Free Project
NOT FOR RESALE

Let's Partea - Fabrics in the Collection



2377-01 Cherries
White



2378-90 Tossed Tea-
pots & Teacups - Gray



2379-99 Tossed
Teacups - Black



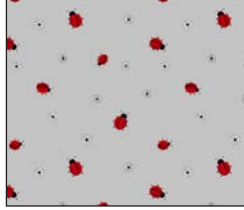
2380-99 Teabags
Black



2381-01 Tossed
Teapots - White



2382-01 Teacup Stripe
White



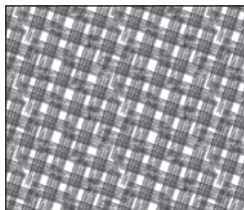
2383-90 Ladybugs
Gray



2384-90 Teaspoons
Gray



2385-88 Abstract
Argyle - Red

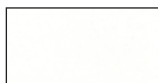


2385-99 Abstract
Argyle - Black



2376-01 Teapots and Teacups
White

Selected fabrics from the
Eclipse Collection



3955
White



3955
Red



3955
Jet Black

Let's Partea - Table Runner Set

Page 1

Materials

Yardages and cutting instructions are based on 42" of usable fabric width.

1/4 yard 3955 Eclipse - Dove
1/4 yard 2378-90 Tossed Teapots & Teacups - Gray
1/4 yard 2379-99 Tossed Teacups - Black
1/4 yard 2381-01 Tossed Teapots - White
1/4 yard 2382-01 Teacup Stripe - White
1/4 yard 2384-90 Teaspoons - Gray
1/4 yard 2385-99 Abstract Argyle - Black
1/2 yard 3955 Eclipse - Red
1/2 yard 3955 Eclipse - White
1/2 yard 2377-01 Cherries - White
5/8 yard 2383-90 Ladybugs - Gray
1-1/8 yards 2380-99 Teabags - Black
1-5/8 yards 3955 Eclipse - Jet Black
3-1/2 yards 2376-01 Teapots & Teacups for backing
32" x 62" piece of Air Lite® Colour Me 100% Cotton
batting for Table Runner
(6) 17" x 23" pieces of batting for placemats

Cut Fabrics

Note: All strips are cut across the width of the fabric (WOF) from selvage to selvage unless otherwise indicated.

From 3955 Eclipse – Dove:

*Cut one 5-1/4" x WOF strip. Sub-cut six 5-1/4" squares; cut twice diagonally (A).

From each:

2378-90 Tossed Teapots & Teacups – Gray

2381-01 Tossed Teapots – White

2384-90 Teaspoons - Gray

*Cut one 6-1/2" x WOF strip. Sub-cut two 6-1/2" squares.

From each:

2379-99 Tossed Teacups – Black

2382-01 Teacup Stripe - White

*Cut one 4-1/2" x WOF strip. Sub-cut three 4-1/2" squares.

From 2385-99 Abstract Argyle – Black:

*Cut one 6-7/8" x WOF strip. Sub-cut three 6-7/8" squares; cut twice diagonally (B).

From 3955 Eclipse – Red:

*Cut one 3-7/8" x WOF strip. Sub-cut six 3-7/8" squares.

*Cut one 5-3/4" x WOF strip. Sub-cut six 5-3/4" squares.

*Cut four 1-1/4" x WOF strips for border 2 (runner).

From 3955 Eclipse – White:

*Cut one 1-1/2" x WOF strip. Sub-cut six 1-1/2" x 6-1/2" strips.

*Cut seven 1-1/2" x WOF strips for border 1 (placemats).

From 2377-01 Cherries – White:

*Cut two 2-1/2" x WOF strips. Sub-cut twenty-four 2-1/2" squares.

*Cut three 1-1/4" x WOF strips for sashing.

*Cut four 1-1/4" x WOF strips for border 1 (runner).

From 2383-90 Ladybugs – Gray:

*Cut two 3-7/8" x WOF strips. Sub-cut twelve 3-7/8" squares.

*Cut two 5-3/4" x WOF strips. Sub-cut twelve 5-3/4" squares.

From 2380-99 Teabags – Black:

*Cut four 2" x WOF strips for border 2 (placemats – sides).

*Cut six 2-1/2" x WOF strips for border 2 (placemats – top/bottom).

*Cut four 3-1/2" x WOF strips for border 3 (runner).

From 3955 Eclipse - Jet Black:

*Cut one 3-7/8" x WOF strip. Sub-cut six 3-7/8" squares.

*Cut one 5-3/4" x WOF strip. Sub-cut six 5-3/4" squares.

*Cut one 6-7/8" x WOF strip. Sub-cut three 6-7/8" squares; cut twice diagonally (C).

*Cut fourteen 2-1/2" x WOF strips for binding.

TABLE RUNNER

Assemble Blocks

Note: Measurements include 1/4" seam allowances. Sew with right sides together unless otherwise stated. If no direction is specified, press the seam toward the darker fabric.

1. Fold one 4-1/2" 2382-01 Teacup Stripe – White square in half with right sides together. Mark the center on opposite sides of the square. Fold two 3955 Eclipse – Dove triangles A with wrong sides together and crease to mark the center. With right sides together and nesting the centers, sew the Dove triangles to opposite sides of the Stripe – White square. Press the seams open. Similarly, sew two more Dove triangles A to the other sides of the same square. Press open and trim ears. Repeat to make three 6-1/4" units. Sew two 2385-99 Abstract Argyle – Black triangles B to adjacent left sides of each unit, trim and press as before. Similarly, sew two 3955 Eclipse – Jet Black triangles C to adjacent right sides of the units (*figure 1*).

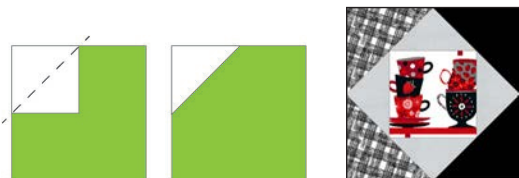


Figure 1 – Make (3) 8-1/2" blocks.

2. Repeat Step 1 with the 4-1/2" 2379-99 Tossed Teacups – Black squares and the remaining triangles A, B, and C to make three more 8-1/2" blocks. However, sew the Black triangles C to the left side and the Argyle triangles B to the right side of the block centers (*figure 2*).



Figure 2 – Make (3) 8-1/2" blocks.

3. Draw a diagonal line on the wrong side of the 2-1/2" 2377-01 Cherries – White squares. With right sides together, place one marked Cherries – White

square on a corner of one Step 1 block and stitch on the drawn line. Repeat with the opposite corner. Trim seam allowances to 1/4" and press open. Repeat with the other corners of the block. Similarly, sew the 2-1/2" Cherries – White squares to the remaining Step 1 and Step 2 blocks (*figure 3*).



Figure 3 – Make (6) assorted 8-1/2" blocks.

4. Mark two diagonal lines on the wrong side of the 5-3/4" 2383-90 Ladybugs – Gray squares (a). Layer a marked Gray square atop a 5-3/4" 3955 Eclipse – Jet Black square. Stitch 1/4" on each side of the marked lines (b), cut vertically and horizontally to make four equal squares (c), then cut each square on the drawn lines to make eight half-square triangles (d). Press open and trim dog ears. Repeat with the remaining Gray and Jet Black squares to make a total of forty-eight 2-1/2" half-square triangles (HST).

Repeat this step with the remaining 5-3/4" 2383-90 Ladybugs – Gray squares and the 5-3/4" 3955 Eclipse – Red squares to make forty-eight 2-1/2" HST (*figure 4*).

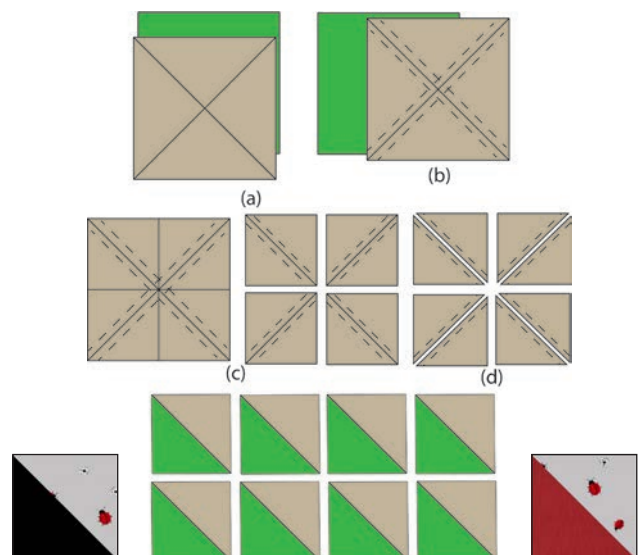


Figure 4 – Make (48) 2-1/2" units of each type.

5. Sew the Step 4 units two-by-two, press the seams in one direction, then sew the rows together to make twelve Black and twelve Red 4-1/2" pinwheel blocks (*figure 5*). Press the seams open.

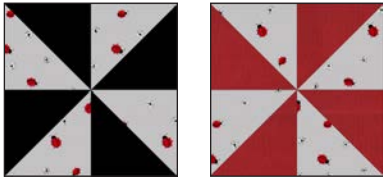


Figure 5 – Make (12) 4-1/2" blocks of each type.

Assemble Table Runner

6. Referring to the quilt photo for block placement, lay out the Step 3 blocks in one column, and join the blocks together. Press the seams in one direction.

7. For the sashing, join the three 1-1/4" 2377-01 Cherries – White strips together end to end using diagonal seams. Cut two 48-1/2" lengths and sew one strip to the left and one to the right of the blocks. Press the seams away from the center.

8. Referring to the quilt photo for block placement, lay out two strips with twelve Step 5 blocks each, and sew the blocks together. Press the seams open. Sew one strip to the right and one to the left of the center. Press the seams away from the center.

9. For border 1, join the four 1-1/4" 2377-01 Cherries – White strips together end to end using diagonal seams. Measure the vertical length of the runner through the center and cut two border strips that length. Sew one strip to each side of the quilt top and press the seams toward the border strips. Measure the width of the runner through the center. Cut two border strips that length and sew one to the top and one to the bottom. Press the seams toward the borders.

10. Repeat Step 9 with the four 1-1/4" 3955 Eclipse – Red strips to make and add border 2.

11. Repeat Step 9 with the four 3-1/2" 2380-99 Teabags – Black strips to make and add border 3.

Finishing

12. Create a sandwich with the batting between the runner and the backing. Pin or baste layers together, mark quilting design, and quilt by hand or machine. When quilting is complete, remove pins or basting, and trim batting and backing even with raw edges of the table runner.

13. Join five 2-1/2" 3955 Eclipse - Jet Black binding strips together end to end using a diagonal seam to make one long strip. Fold in half lengthwise and press. Sew binding to the edges of the runner, mitering corners, and overlapping ends. Fold binding to the back of the runner and stitch it in place by hand to finish.

PLACEMATS

Assemble Blocks

1. Draw a diagonal line on the wrong side of the 3-7/8" 2383-90 Ladybugs – Gray squares. With right sides together, layer the marked Gray squares atop the 3-7/8" 3955 Eclipse - Jet Black squares. Stitch 1/4" on each side of the marked line, cut on the drawn line, press each unit open with seams toward dark fabric, and trim dog ears. Make a total of twelve 3-1/2" half-square triangles (HST).

Repeat this step with the remaining 3-7/8" 2383-90 Ladybugs – Gray squares and the 3-7/8" 3955 Eclipse – Red squares to make twelve more 3-1/2" HST.

2. Stitch the Step 1 units two-by-two, press the seams in one direction, then sew the rows together to make twelve Black and twelve Red 6-1/2" pinwheel blocks. Press the seams open.

Assemble Placemats

3. Sew a 1-1/2" x 6-1/2" 3955 Eclipse – White strip between a Step 2 Red pinwheel block and a 6-1/2" 2378-90 Tossed Teapots & Teacups – Gray square. Repeat with the remaining Red pinwheel blocks, one

Let's Partea - Table Runner Set

Page 4

2381-01 Tossed Teapots – White square, and one 2384-90 Teaspoons – Gray square (*figure 1*). Press the seams toward the center. Make three 6-1/2" x 13-1/2" placemat centers.

Repeat this step with the Black 6-1/2" pinwheel blocks and the remaining 6-1/2" squares to make three more placemat centers.



Figure 1 – Make (6) 6-1/2" x 13-1/2" placemat centers.

4. For border 1, cut four 1-1/2" 3955 Eclipse – White strips into twelve 1-1/2" x 13-1/2" strips. Sew one strip to the top and one to the bottom of the Step 3 placemat centers. Press the seams toward the borders. Cut the remaining 1-1/2" White strips into twelve 8-1/2" lengths and sew one strip to opposite sides of the placemats. Press the seams toward the borders.

5. For border 2 (top and bottom only), measure the width of a placemat through its center. Cut the 2-1/2" 2380-99 Teabags – Black border strips that length

and sew one to the top and one to the bottom of the placemats. Press seams toward borders.

6. For the sides of border 2, measure the vertical length of a placemat through its center. Cut the 2" 2380-99 Teabags – Black border strips that length and sew one strip to each side of the placemats. Press seams toward borders.

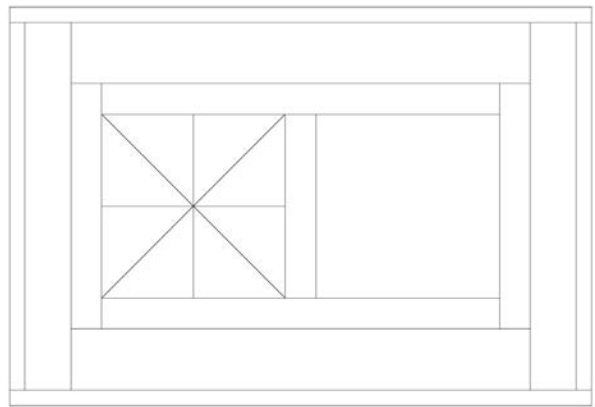
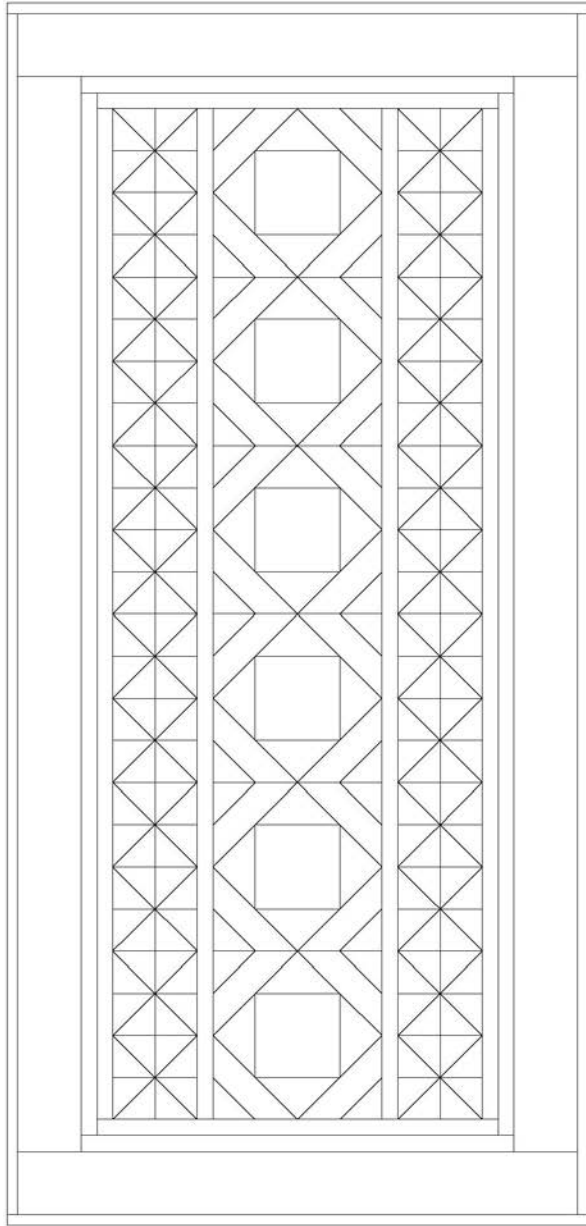
Finishing

7. Cut six 17" x 23" 2376-01 Teapots & Teacups rectangles for the backing. Create a quilt sandwich with the batting between the placemats and the backing. Pin or baste layers together, mark quilting design, and quilt by hand or machine. When quilting is complete, remove pins or basting, and trim batting and backing even with raw edges of the placemats.

8. Join nine 2-1/2" 3955 Eclipse - Jet Black binding strips together end to end using a diagonal seam to make one long strip. Fold in half lengthwise and press. Sew binding to the edges of the placemats, mitering corners, and overlapping ends. Fold binding to the back of each placemat and stitch it in place by hand to finish.

©2021 Blank Quilting Corporation

Every effort has been made to ensure that all projects are error free. All the information is presented in good faith; however, no warranty can be given nor results guaranteed as we have no control over the execution of instructions. Therefore, we assume no responsibility for the use of this information or damages that may occur as a result. When errors are brought to our attention, we make every effort to correct and post a revision as soon as possible. Please make sure to check www.blankquilting.net for pattern updates prior to starting the project. We also recommend that you test the project prior to cutting for kits. Finally, all free projects are intended to remain free to you and are not for resale.



Diagrams