

UPDATED ON MARCH 18, 2021

Luna Garden

A Free Project Sheet
NOT FOR RESALE

Quilt 1

Quilt Design by Heidi Pridemore



Skill Level: Advanced Beginner

facebook



Finished Quilt Size: 66" x 75"
49 West 37th Street, 14th floor, New York, NY 10018
Toll Free: 800-294-9495
fax: 212-679-4578
www.blankquilting.net

Please check our website for pattern updates before starting this project.

LUNA GARDEN

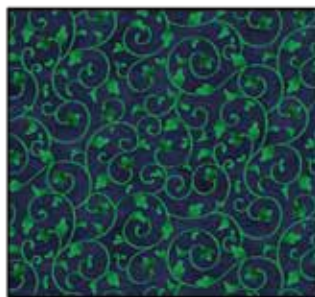
Quilt 1

Finished Quilt Size: 66" x 75"

Fabrics in the Luna Garden Collection



Large Floral - Navy
1419-77



Vine - Navy
1420-77



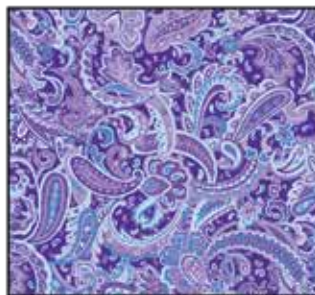
Spaced Floral - Light Purple
1421-50



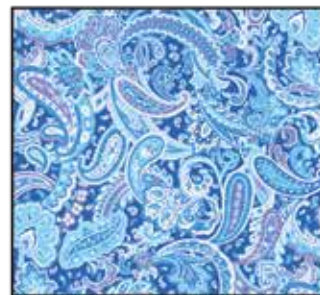
Spaced Floral - Light Blue
1421-70



Stripe - Light Blue
1422-70



Paisley - Purple
1423-55



Paisley - Light Blue
1423-70



Small Floral - Light Purple
1424-50



Tonal Floral - Purple
1425-55



Tonal Floral - Green
1425-66



Tonal Floral - Light Blue
1425-70



Floral Panel - Navy
1426P-77

Materials

1 panel	Floral Panel - Navy (A)	1426P-77
$\frac{3}{8}$ yard	Tonal Floral - Purple (B)	1425-55
$1\frac{7}{8}$ yards	Stripe - Light Blue (C)	1422-70
$\frac{1}{2}$ yard	Tonal Floral - Green (D)	1425-66
$\frac{1}{4}$ yard	Large Floral - Navy (E)	1419-77
$1\frac{3}{8}$ yards	Vine - Navy (F)	1420-77*
$\frac{3}{8}$ yard	Spaced Floral - Light Purple (G)	1421-50
$\frac{3}{8}$ yard	Paisley - Light Blue (H)	1423-70
$\frac{3}{8}$ yard	Small Floral - Light Purple (I)	1424-50
$\frac{1}{4}$ yard	Spaced Floral - Light Blue (J)	1421-70
$\frac{1}{4}$ yard	Paisley - Purple (K)	1423-55
$\frac{1}{4}$ yard	Tonal Floral - Light Blue (L)	1425-70
$4\frac{1}{4}$ yards	Small Floral - Light Purple (Backing)	1424-50

*Includes binding

Batting: 74" x 83"

(Recommended: Air Lite® Colour Me 100% Cotton)

Cutting Instructions

Please note: All strips are cut across the width of fabric (WOF) from selvage to selvage edge unless otherwise noted.

From the Floral Panel - Navy (A):

- Fussy cut (1) $33\frac{3}{4}$ " x $41\frac{1}{4}$ " rectangle, centered on the panel.

From the Tonal Floral - Purple (B), cut:

- (2) $2\frac{1}{2}$ " x $41\frac{1}{4}$ " WOF strips, piece as needed.
- (2) $2\frac{1}{2}$ " x $37\frac{3}{4}$ " WOF strips.

From the Stripe - Light Blue (C), fussy cut:

- (2) $8\frac{1}{4}$ " x 64 " LOF strips, centered on the floral strip.
- (3) $8\frac{1}{4}$ " x 56 " LOF strips, centered on the floral strip.

From the Tonal Floral - Green (D), cut:

- (3) $1\frac{3}{4}$ " x WOF strips. Sew the strips together end to end with diagonal seams and cut (2) $1\frac{3}{4}$ " x 60 " strips.
- (3) $2\frac{1}{4}$ " x WOF strips. Sew the strips together end to end with diagonal seams and cut (2) $2\frac{1}{4}$ " x $54\frac{1}{2}$ " strips.

From the Large Floral - Navy (E), cut:

- (1) $6\frac{1}{2}$ " x WOF strip. Sub-cut (4) $6\frac{1}{2}$ " squares.

From the Vine - Navy (F), cut:

- (7) $3\frac{1}{2}$ " x WOF strips. Sub-cut (78) $3\frac{1}{2}$ " squares.
- (7) $2\frac{1}{2}$ " x WOF strips for the binding.

From the Spaced Floral - Light Purple (G), cut:

- (3) $3\frac{1}{2}$ " x WOF strips. Sub-cut (14) $3\frac{1}{2}$ " x $6\frac{1}{2}$ " strips.

From the Paisley - Light Blue (H), cut:

- (3) $3\frac{1}{2}$ " x WOF strips. Sub-cut (14) $3\frac{1}{2}$ " x $6\frac{1}{2}$ " strips.

From the Small Floral - Light Purple (I), cut:

- (3) $3\frac{1}{2}$ " x WOF strips. Sub-cut (14) $3\frac{1}{2}$ " x $6\frac{1}{2}$ " strips.

From the Spaced Floral - Light Blue (J), cut:

- (2) $3\frac{1}{2}$ " x WOF strips. Sub-cut (12) $3\frac{1}{2}$ " x $6\frac{1}{2}$ " strips.

From the Paisley - Purple (K), cut:

- (2) $3\frac{1}{2}$ " x WOF strips. Sub-cut (12) $3\frac{1}{2}$ " x $6\frac{1}{2}$ " strips.

From the Tonal Floral - Light Blue (L), cut:

- (2) $3\frac{1}{2}$ " x WOF strips. Sub-cut (12) $3\frac{1}{2}$ " x $6\frac{1}{2}$ " strips.

From the Small Floral - Light Purple (Backing), cut:

- (2) 74" x WOF strips for the backing. Sew the strips together and trim to make the 74" x 83" back.

Block Assembly

Note: Pay attention to the unit orientations when assembling various components. Use a $\frac{1}{4}$ " seam allowance with right sides together (RST) unless otherwise noted.

1. Sew (1) $2\frac{1}{2}$ " x $41\frac{1}{4}$ " Fabric B strip to each side of the $33\frac{3}{4}$ " x $41\frac{1}{4}$ " Fabric A panel. Sew (1) $2\frac{1}{2}$ " x $37\frac{3}{4}$ " Fabric B strip to the top and to the bottom of the Fabric A panel to make the Center Block (Fig. 1).

Trim the block to measure $36\frac{1}{2}$ " x $44\frac{1}{2}$ ".

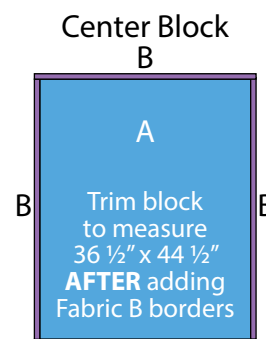
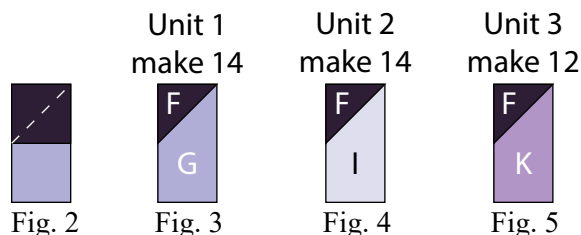


Fig. 1 B

2. Place (1) $3\frac{1}{2}$ " Fabric F square on the top of (1) $3\frac{1}{2}$ " x $6\frac{1}{2}$ " Fabric G strip, right sides together and aligning the tops of the fabrics (Fig. 1). Sew across the diagonal of the square from the upper right corner to the lower left corner (Fig. 2). Flip open the triangle formed and press. Trim away the excess fabric from behind the triangle, leaving a $\frac{1}{4}$ " seam allowance to make (1) Unit 1 strip (Fig. 3). Repeat to make (14) Unit 1 strips total.

3. Repeat Step 2 and refer to Figures 4-5 for fabric identification, location and seam direction to make (14) Unit 2 strips and (12) Unit 3 strips.



4. Place (1) 3 ½" Fabric F square on the top of (1) 3 ½" x 6 ½" Fabric H strip, right sides together and aligning the tops of the fabrics (Fig. 6). Sew across the diagonal of the square from the upper left corner to the lower right corner (Fig. 6). Flip open the triangle formed and press. Trim away the excess fabric from behind the triangle, leaving a ¼" seam allowance to make (1) Unit 4 strip (Fig. 7). Repeat to make (14) Unit 4 strips total.

5. Repeat Step 4 and refer to Figures 8-9 for fabric identification, location and seam direction to make (12) Unit 5 strips and (12) Unit 6 strips.



Fig. 6

Unit 4
make 14



Fig. 7

Unit 5
make 12



Fig. 8

Unit 6
make 12



Fig. 9

6. Sew (1) Unit 1 strip to the left side of (1) Unit 4 strip lengthwise to make (1) Unit 7 square (Fig. 10). Repeat to make (14) Unit 7 squares total.



Fig. 10

7. Sew (1) Unit 2 strip to the left side of (1) Unit 5 strip lengthwise to make (1) Unit 8 square (Fig. 11). Repeat to make (12) Unit 8 squares total.



Fig. 11



Fig. 12

9. Follow Figure 13 and sew together (4) Unit 7 squares, (3) Unit 8 squares, (3) Unit 9 squares and (1) Unit 2 strip to make (1) Side Border. Repeat to make a second Side Border.

10. Follow Figure 14 below and sew together (3) Unit 7 squares, (3) Unit 8 squares, (3) Unit 9 squares and (2) 6 ½" Fabric E squares to make the Top Border. Repeat to make the Bottom Border.

Side Border



Fig. 13

Quilt Top Assembly

(Follow the Quilt Layout while assembling the quilt top. The arrows in the Quilt Layout represent the fabric print direction.)

11. Center (1) 8 ¼" x 64" Fabric C strip on (1) side of the Center Block and pin in place. Start sewing the strip a ¼" from the top edge of the block and stop a ¼" from the bottom edge. **DO NOT TRIM THE EXCESS.** Repeat with the opposite side.

Top/Bottom Border

make 2



Fig. 14

12. Repeat Step 11 to sew (1) 8 1/4" x 56" Fabric C strip to the top and to the bottom of the Center Block, making sure to stop and start 1/4" away from each end of the block. To miter each corner, fold the Center Block on a diagonal, wrong side together. This should line up the strips from adjacent sides (Fig. 15).

13. Starting at the sewn seam (represented by the arrow in Figure 15), draw a 45-degree line to the edge of the fabric. Sew on the drawn line. Trim the excess fabric leaving a 1/4" seam. Repeat this step with the remaining corners.

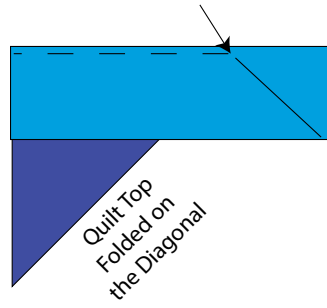


Fig. 15

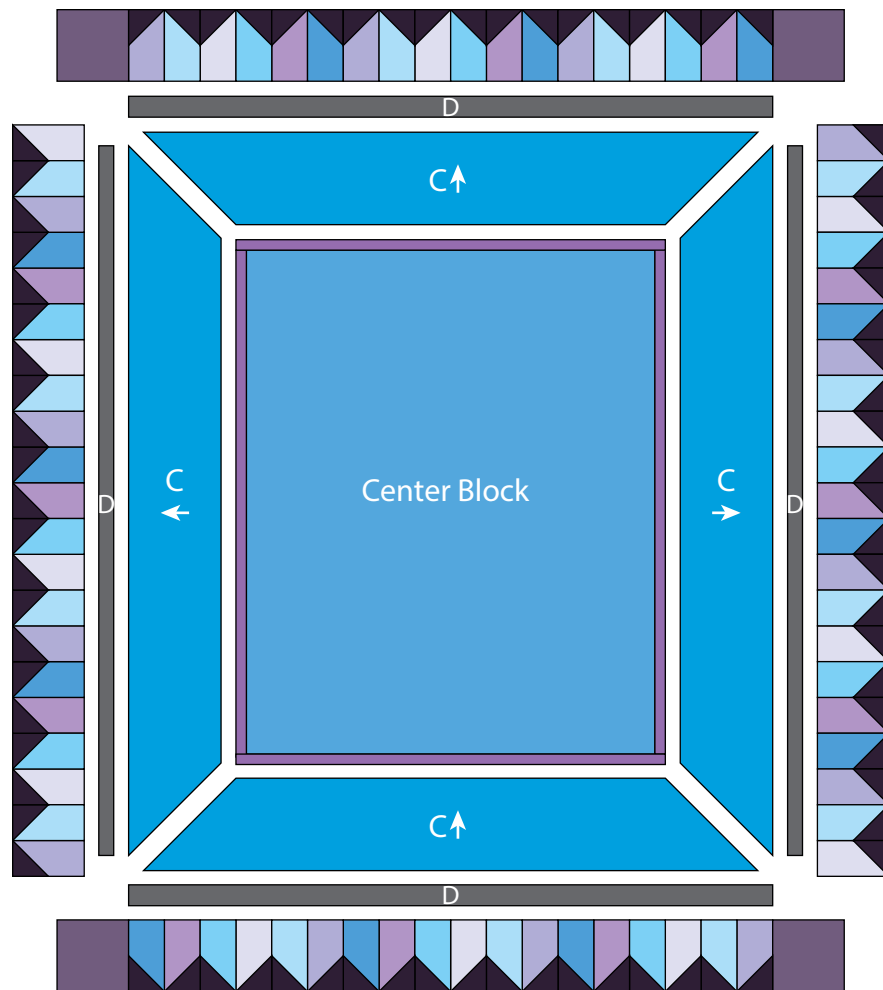
14. Sew (1) 1 3/4" x 60" Fabric D strip to each side of the Center Block. Sew (1) 2 1/4" x 54 1/2" Fabric D strip to the top and to the bottom of the Center Block.

15. Sew (1) Side Border to each side of the Center Block. Sew the Top Border and Bottom Border to the top and to the bottom of the Center Block to make the quilt top.

16. Layer and quilt as desired.

17. Sew the (7) 2 1/2" x WOF Fabric F strips together, end to end with 45-degree seams, to make the binding. Fold this long strip in half lengthwise with wrong sides together and press.

18. Bind as desired.



Quilt Layout

Every effort has been made to ensure that all projects are error free. All the information is presented in good faith, however no warranty can be given nor results guaranteed as we have no control over the execution of instructions. Therefore, we assume no responsibility for the use of this information or damages that may occur as a result. When errors are brought to our attention, we make every effort to correct and post a revision as soon as possible. Please make sure to check www.blankquilting.net for pattern updates prior to starting the project. We also recommend that you test the project prior to cutting for kits. Finally, all free projects are intended to remain free to you and are **not for resale**.