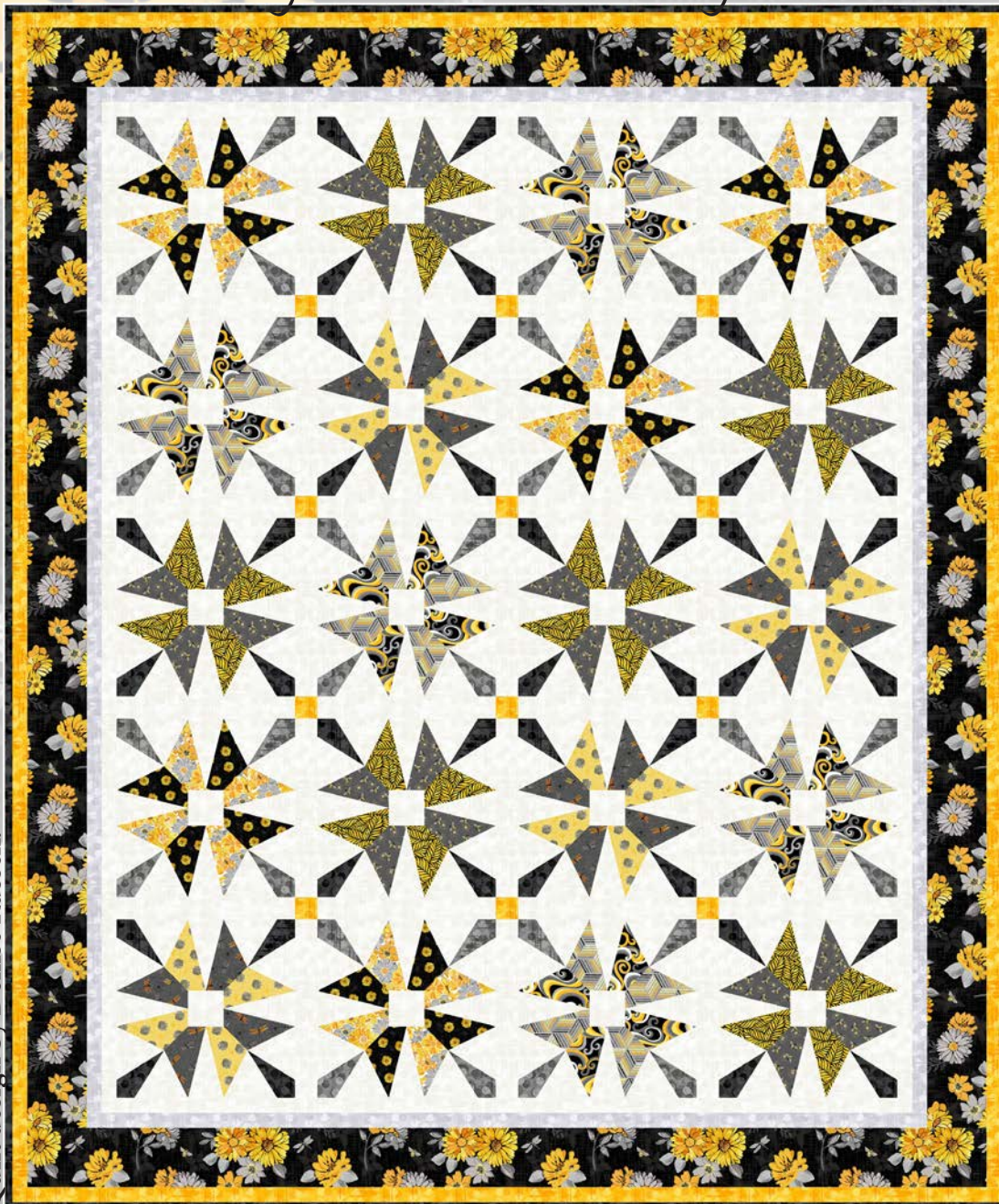




Quilt 2

Mellow Yellow

by *Satin Moon Designs*



Quilt design by Denise Russell.

Quilt size: 68" x 81."

Skill Level: Advanced Beginner.

Blank Quilting Corporation
49 West 37th Street ♦ New York, NY 10018
Tel: 800-294-9495 ♦ Fax: 212-679-4578
www.blankquilting.net

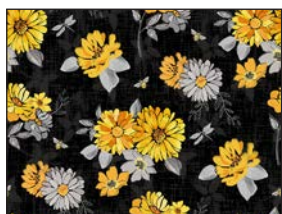
facebook

Free Project
NOT FOR RESALE

Mellow Yellow - Fabrics in the Collection



1964-90 Large Floral
Lt. Gray



1964-99 Large Floral
Black



1965-44 Floral Collage
Yellow



1966-44 Leaves
Yellow



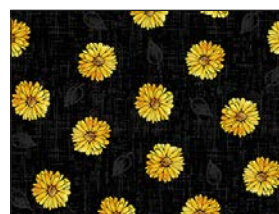
1966-90 Leaves
Lt. Gray



1967-44 Scroll
Yellow



1968-44 Mini Daisies
Yellow



1968-99 Mini Daisies
Black



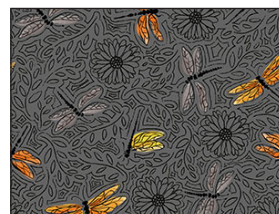
1969-01 Bees
White



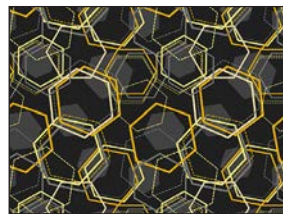
1969-95 Bees
Gray



1970-44 Dragonflies
Yellow



1970-95 Dragonflies
Gray



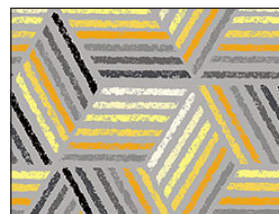
1971-99 Honeycomb
Geometric - Black



1972-01 Paisley
White



1972-99 Paisley
Black



1973-90 Geometric
Lt. Gray



1973-99 Geometric
Black

Selected fabrics from the
Jot Dot I and II collections



9570-09 Marshmallow



9570-42 Md. Yellow



9570-92 Charcoal



9570-93 Fog



9570-99 Black

Mellow Yellow - Quilt 2

Page 1

Materials

Yardages and cutting instructions are based on 42" of usable fabric width.

3/8 yard 1965-44 Floral Collage - Yellow
3/8 yard 1966-44 Leaves - Yellow
3/8 yard 1967-44 Scroll - Yellow
3/8 yard 1968-44 Mini Daisies - Yellow
3/8 yard 1968-99 Mini Daisies - Black
3/8 yard 1969-95 Bees - Gray
3/8 yard 1970-95 Dragonflies - Gray
3/8 yard 1973-90 Geometric - Lt. Gray
3/8 yard 9570-93 Jot Dot - Fog
1/2 yard 9570-42 Jot Dot - Md. Yellow
1/2 yard 9570-92 Jot Dot - Charcoal
1 yard 1964-99 Large Floral - Black
1-1/8 yards 9570-99 Jot Dot - Black
3-1/3 yards 9570-09 Jot Dot - Marshmallow
4-3/8 yards 1969-01 Bees - White for backing
76" x 89" piece of Air Lite® Colour Me 100% Cotton batting
Plastic for template
Fusible web
Matching thread for machine appliqué.

Cut Fabrics

Note: All strips are cut across the width of the fabric (WOF) from selvage to selvage unless otherwise indicated.

From each:

1965-44 Floral Collage – Yellow

1973-90 Geometric - Lt. Gray

*Cut twenty petals using template B.

From each:

1967-44 Scroll - Yellow

1968-99 Mini Daisies – Black

*Cut twenty petals using template C.

From 1966-44 Leaves – Yellow:

*Cut twenty-four petals using template B.

From 1969-95 Bees – Gray:

*Cut twenty-four petals using template C.

From 1968-44 Mini Daisies – Yellow:

*Cut sixteen petals using template B.

From 1970-95 Dragonflies – Gray:

*Cut sixteen petals using template C.

From 9570-93 Jot Dot – Fog:

*Cut seven 1-1/2" x WOF strips for border 2.

From 9570-42 Jot Dot - Md. Yellow:

*Cut one 2" x WOF strip. Sub-cut twelve 2" squares.

*Cut eight 1-1/2" x WOF strips for border 4.

From 9570-92 Jot Dot – Charcoal:

*Cut forty leaves using template A.

From 1964-99 Large Floral – Black:

*Cut seven 4-1/2" x WOF strips for border 3.

From 9570-99 Jot Dot – Black:

*Cut eight 2-1/2" x WOF strips for binding.

*Cut forty leaves using template A.

From 9570-09 Jot Dot – Marshmallow:

*Cut one 2" x WOF strip. Sub-cut three 2" x 12-1/2" sashing strips.

*Cut eight 12-1/2" x WOF strips. Sub-cut twenty 12-1/2" squares and twenty-eight 2" x 12-1/2" sashing strips (for a total of 31).

*Cut six 1-1/2" x WOF strips for border 1.

*Cut forty 2-1/4" squares using template D.+++

+++ Two 2-1/4" squares for the center of each block.



Mellow Yellow - Quilt 2

Assemble Blocks

Measurements include 1/4" seam allowances. Sew with right sides together unless otherwise stated. If no direction is specified, press the seam toward the darker fabric.

Refer to Table 1 below for the fabric combinations to assemble the blocks.





 <p>Block 1 – Make 5 *9570-92 Jot Dot – Charcoal (Cut 20 A) *1965-44 Floral Collage – Yellow (cut 20 B) *1968-99 Mini Daisies – Black (cut 20 C)</p>	 <p>Block 2 – Make 6 *9570-99 Jot Dot – Black (Cut 24 A) *1966-44 Leaves – Yellow (Cut 24 B) *1969-95 Bees – Gray (Cut 24 C)</p>	 <p>Block 3 – Make 5 *9570-92 Jot Dot – Charcoal (Cut 20 A) *1973-90 Geometric – Lt. Gray (Cut 20 B) *1967-44 Scroll – Yellow (Cut 20 C)</p>	 <p>Block 4 – Make 4 *9570-99 Jot Dot – Black (Cut 16 A) *1968-44 Mini Daisies – Yellow (Cut 16 B) *1970-95 Dragonflies – Gray (Cut 16 C)</p>
---	---	--	--

Table 1. Fabric combination for each block.

1. Trace templates A, B, C, and D on the plastic to make templates. Cut on the outline. Trace templates on the smooth side of the fusible web: **A, B, and C** – eighty times each, D - forty times. Cut each shape 1/8" outside the outline, copy the letter on a corner of it (so you will know which is which once you do the next step), then cut inside each petal and square to remove most of the fusible web from the middle, making them hollow (*figure 1*). Fuse the hollow shapes to the wrong side of the fabrics as listed in Table 1, cut on the outline, and remove the paper backing.

Notes:

- By hollowing the fusible web for the petals and squares you will ensure a softer hand to the quilt.
- There is no need to make shape A (leaf) hollow as it is a narrow piece.
- Group petals and leaves per block to ensure correct assembly.
- To prevent shadowing, you are cutting an additional 20 Marshmallow D squares. As they are fused to the center of each block, the double squares will help cover the dark petal fabrics that might otherwise show through.
- As you fuse the shapes, be sure there is 1/4" between their points and the background square's edge for the seam allowance.

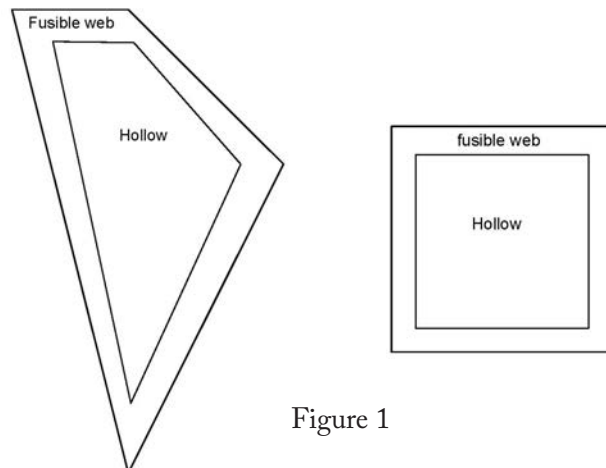


Figure 1

Mellow Yellow - Quilt 2 Page 3

2. Fold and crease the 12-1/2" 9570-09 Jot Dot - Marshmallow background squares diagonally twice. Position the petals on the squares using the creased folds as guidelines – there will be an empty square space in the middle, where you will place the two D squares per block. Working according to the fusible web manufacturer's instructions, fuse the petals and leaves to the background first, then stack two Marshmallow D squares in the center of the block, positioning them so they barely cover the bottom edges of each petal and fuse (*figure 2*). Machine appliqué using matching thread and the blanket stitch. Make twenty assorted 12-1/2" blocks.

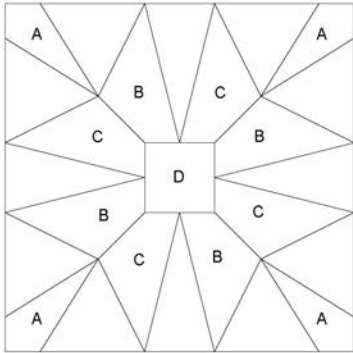


Figure 2

Assemble Quilt Top

3. Referring to the quilt photo for block placement, lay out four blocks and three 2" x 12-1/2" sashing strips in five rows. Join the blocks and sashing strips together in each row. Press the seams toward the sashing.

4. To make the horizontal sashing rows, sew together four 2" x 12-1/2" sashing strips and three 2" 9570-42 Jot Dot - Md. Yellow cornerstone squares. Press the seams toward the sashing. Repeat to make a total of four sashing strips.

5. Matching adjacent seams, sew block rows and horizontal sashing strips together. Press the seams in one direction.

6. For border 1, sew six 1-1/2" 9570-09 Jot Dot - Marshmallow strips together end to end using diagonal seams. Measure the vertical length of the quilt

top through the center and cut two border strips that length. Sew one strip to each side of the quilt top. Measure the width of the quilt top through the center. Cut two border strips that length and sew one to the top and one to the bottom. Press the seams toward the borders.

7. Repeat Step 6 with the seven 1-1/2" 9570-93 Jot Dot - Fog strips to make and add border 2.

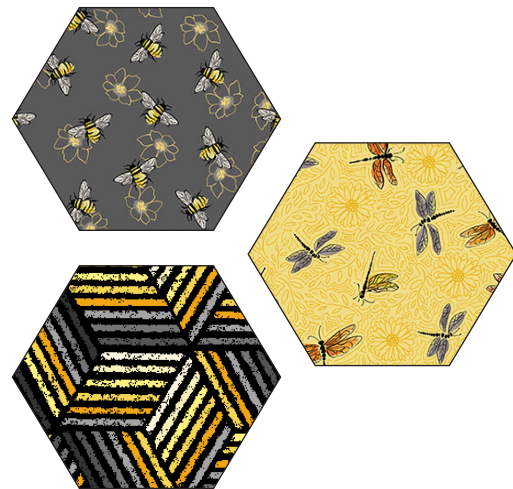
8. Repeat Step 6 with the seven 4-1/2" 1964-99 Large Floral - Black strips to make and add border 3.

9. Repeat Step 6 with the eight 1-1/2" 9570-42 Jot Dot - Md. Yellow strips to make and add border 4.

Finishing

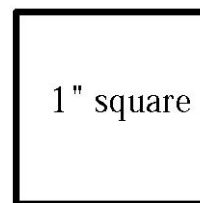
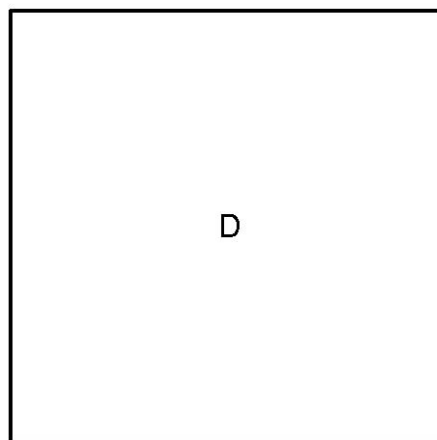
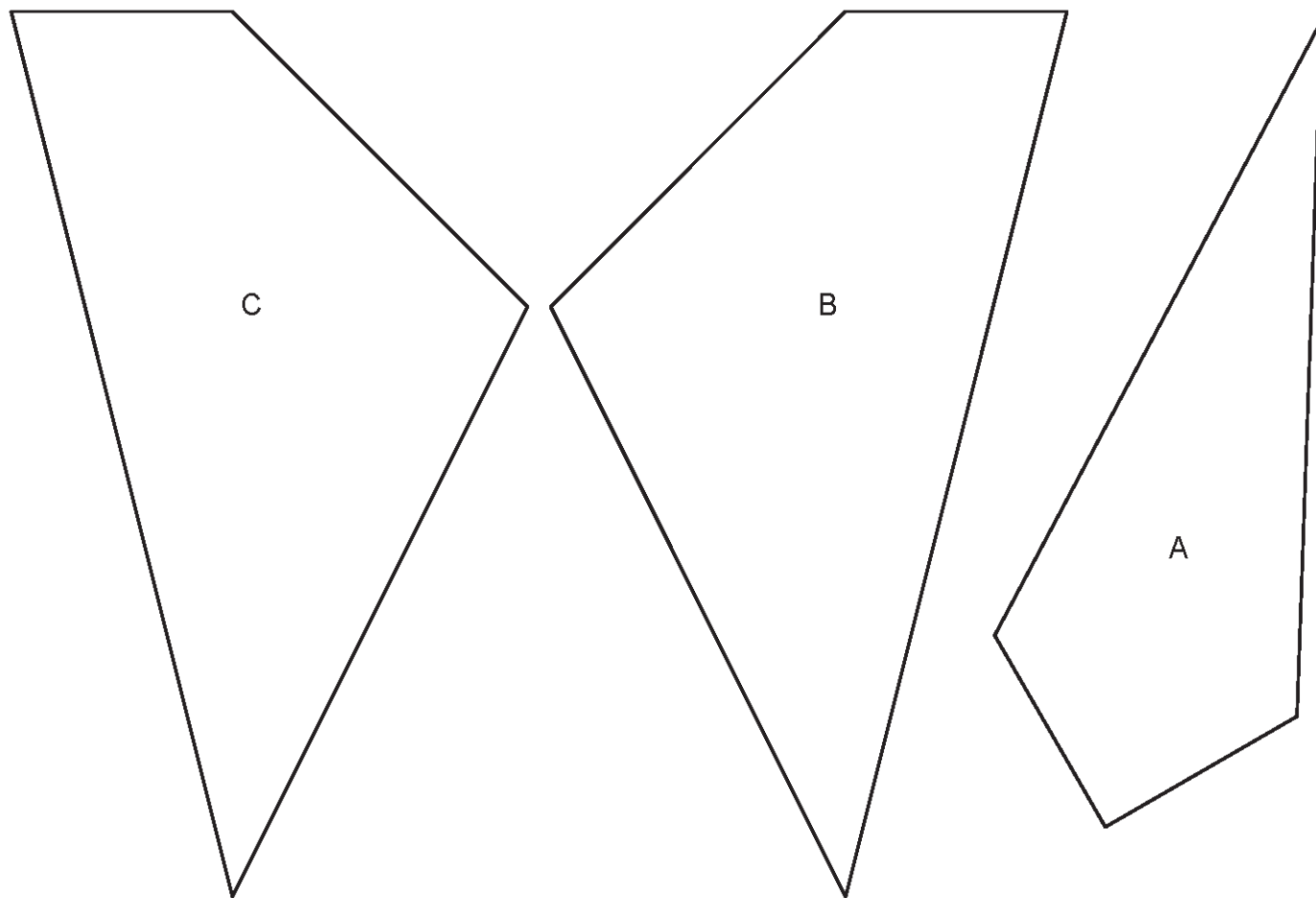
10. Create a quilt sandwich with the batting between the quilt top and the backing. Pin or baste layers together, mark quilting design, and quilt by hand or machine. When quilting is complete, remove pins or basting, and trim batting and backing even with raw edges of the quilt top.

11. Join the eight 2-1/2" 9570-99 Jot Dot - Black binding strips together end to end using a diagonal seam to make one long strip. Fold in half lengthwise and press. Sew binding to the edges of the quilt, mitering corners, and overlapping ends. Fold binding to the back of the quilt and stitch it in place by hand to finish.

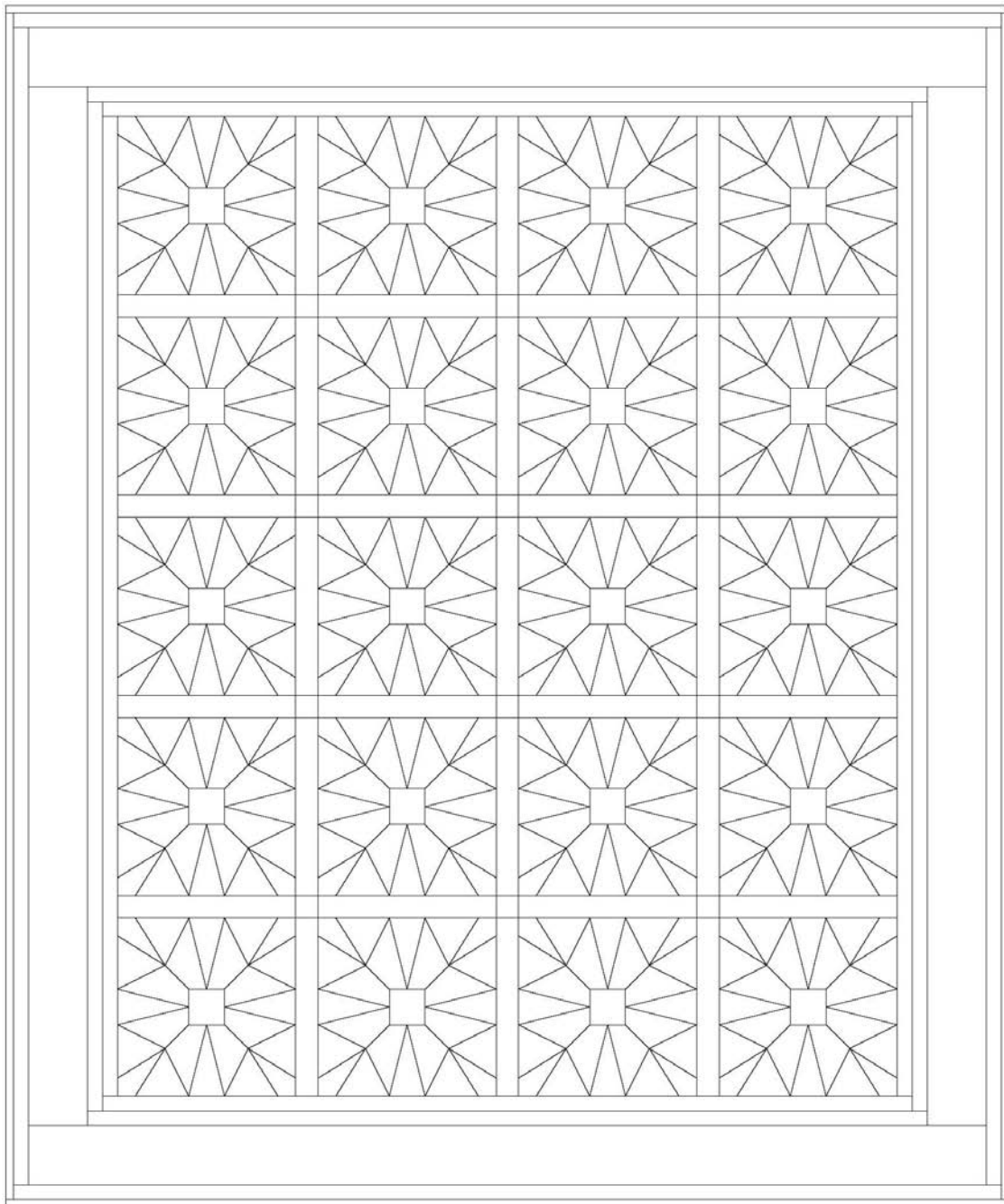


Mellow Yellow - Quilt 2

Templates
100% Scale



Mellow Yellow - Quilt 2



Quilt Diagram

©2021 Blank Quilting Corporation

Every effort has been made to ensure that all projects are error free. All the information is presented in good faith; however, no warranty can be given nor results guaranteed as we have no control over the execution of instructions. Therefore, we assume no responsibility for the use of this information or damages that may occur as a result. When errors are brought to our attention, we make every effort to correct and post a revision as soon as possible. Please make sure to check www.blankquilting.net for pattern updates prior to starting the project. We also recommend that you test the project prior to cutting for kits. Finally, all free projects are intended to remain free to you and are not for resale.