

Millicent

by Satin Moon Designs



Quilt design by Denise Russell.

Quilt size: 69" x 85"

Skill Level: Intermediate

Blank Quilting Corporation
49 West 37th Street ♦ New York, NY 10018
Tel: 800-294-9495 ♦ Fax: 212-679-4578
www.blankquilting.net

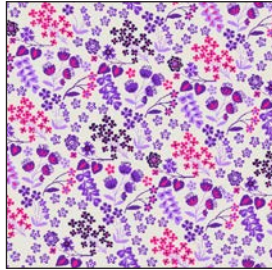
facebook

Free Project
NOT FOR RESALE

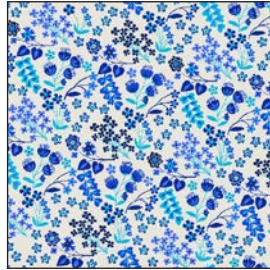
Millicent - Fabrics in the Collection



2103-99 Jacobean
Floral - Black



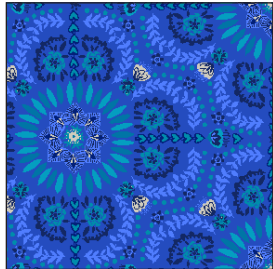
2104-22 Ditsy Floral
Pink



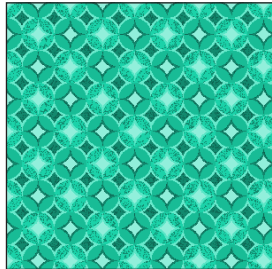
2104-70 Ditsy Floral
Blue



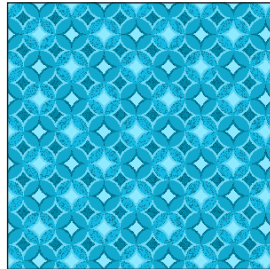
2105-29 Tile
Geometric - Fuchsia



2105-77 Tile
Geometric - Dk. Blue



2106-67 Dot
Geometric - Aqua



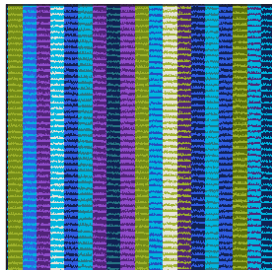
2106-72 Dot
Geometric - Turquoise



2107-55 Monochromatic
Jacobean - Purple



2108-55 Leaf
Abstract - Purple



2109-70 Stripe
Lt. Blue



2110-99 Vine
Black



2111-55 Monochromatic
Mini Jacobean - Purple



2112-41 Paisley
Ivory

Selected fabrics from the
Jot Dot I Collection



9570-09
Marshmallow



9570-22
Fuchsia

Selected fabric from the
Urban Legend Collection
by Tanna Miller



7101-11
Light Blue

Millicent - Quilt 1

Page 1

Materials

Yardages and cutting instructions are based on 42" of usable fabric width.

1/4 yard 2104-22 Ditsy Floral - Pink
1/4 yard 2104-70 Ditsy Floral - Blue
1/2 yard 9570-22 Jot Dot - Fuchsia
1/2 yard 7101-11 Urban Legend - Lt. Blue
1/2 yard 2108-55 Leaf Abstract - Purple
1/2 yard 2107-55 Monochromatic Jacobean - Purple
5/8 yard 2112-41 Paisley - Ivory
2/3 yard 2106-72 Dot Geometric - Turquoise
2/3 yard 2111-55 Monochromatic Mini Jacobean - Purple
3/4 yard 2105-29 Tile Geometric - Fuchsia
3/4 yard 2105-77 Tile Geometric - Dk. Blue
1 yard 9570-77 Jot Dot - Dk. Blue
1-1/8 yards 2103-99 Jacobean Floral - Black
2-1/8 yards 9570-09 Jot Dot - Marshmallow
4-1/2 yards 2112-41 Paisley - Ivory for backing
78" x 93" piece of Air Lite® Colour Me 100% Cotton batting
Plastic for template or cardboard

Cut Fabrics

Note: All strips are cut across the width of the fabric (WOF) from selvage to selvage unless otherwise indicated.

From each:

2104-22 Ditsy Floral – Pink

2104-70 Ditsy Floral - Blue

*Cut two 2-1/2" x WOF strips. Sub-cut twenty-four 2-1/2" squares.

From each:

9570-22 Jot Dot - Fuchsia

7101-11 Urban Legend - Lt. Blue

2108-55 Leaf Abstract – Purple

2107-55 Monochromatic Jacobean - Purple

*Cut eight 1-7/8" x WOF strips.

From 2112-41 Paisley – Ivory:

*Cut seven 2-1/2" x WOF strips for border 2.

From each:

2106-72 Dot Geometric – Turquoise

2111-55 Monochromatic Mini Jacobean – Purple

*Cut eight 1-7/8" x WOF strips.

*Cut two 2-1/2" x WOF strips. Sub-cut twenty-four 2-1/2" squares.

From each:

2105-29 Tile Geometric – Fuchsia

2105-77 Tile Geometric - Dk. Blue

*Cut eight 2-1/4" x WOF strips.

*Cut two 2-7/8" x WOF strips. Sub-cut twenty-four 2-7/8" squares; cut once diagonally. (A)

From 9570-77 Jot Dot - Dk. Blue:

*Cut seven 1-1/2" x WOF strips for border 4.

*Cut eight 2-1/2" x WOF strips for binding.

From 2103-99 Jacobean Floral – Black:

*Cut eight 4-1/2" x WOF strips for border 5.

From 9570-09 Jot Dot – Marshmallow:

*Cut nine 4-7/8" x WOF strips. Sub-cut seventy-two 4-7/8" squares; cut once diagonally. (B)

*Cut seven 1-1/2" x WOF strips for border 3.

*Cut six 2-1/2" x WOF strips for border 1.

Assemble Blocks

Measurements include 1/4" seam allowances. Sew with right sides together unless otherwise stated. If no direction is specified, press the seam toward the darker fabric.

Refer to Table 1 next page for block quantity and fabric combination.



Millicent - Quilt 1

Page 2



 <p>Block 1 - Make 24.</p> <p>Fabrics:</p> <ul style="list-style-type: none"> 2105-29 Tile Geometric – Fuchsia 2107-55 Monochromatic Jacobean – Purple 2111-55 Monochromatic Mini Jacobean – Purple 9570-22 Jot Dot – Fuchsia 2104-22 Ditsy Floral – Pink 2106-72 Dot Geometric – Turquoise 9570-09 Jot Dot – Marshmallow 	 <p>Block 2 – Make 24.</p> <p>Fabrics:</p> <ul style="list-style-type: none"> 2105-77 Tile Geometric - Dk. Blue 2108-55 Leaf Abstract – Purple 2106-72 Dot Geometric – Turquoise 7101-11 Urban Legend - Lt. Blue 2104-70 Ditsy Floral – Blue 2111-55 Monochromatic Mini Jacobean – Purple 9570-09 Jot Dot – Marshmallow
--	---

Table 1. Block quantity and fabric combinations.

1. Make a strip set with the 2-1/4" 2105-29 Tile Geometric – Fuchsia strip and the 1-7/8" strips of 2107-55 Monochromatic Jacobean – Purple, 2111-55 Monochromatic Mini Jacobean – Purple, and 9570-22 Jot Dot – Fuchsia. Press the seams in one direction. Repeat to make eight strip sets.

Trace the triangle template on the plastic for templates or cardboard. Cut on the outline. Align the triangle base with the edge of the Jot Dot – Fuchsia strip, trace its outline three times, and always keep the triangle in the same position (*figure 1*). Repeat with all the strip sets to make a total of twenty-four units. Save the leftover triangles for another project as they are different from what you'll need for this quilt.

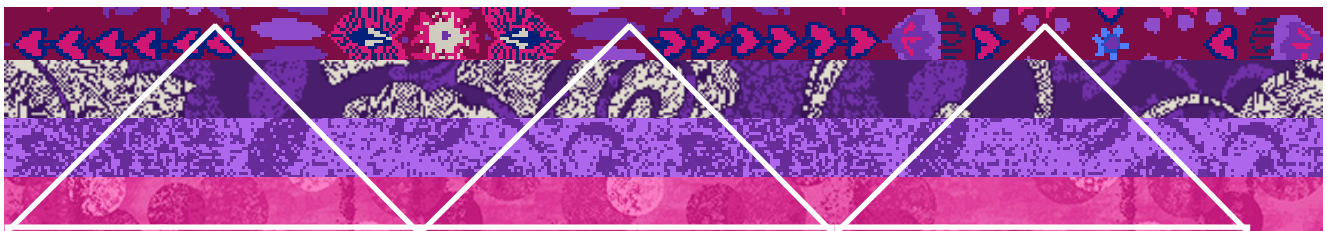


Figure 1 – Make 24.

2. Repeat Step 1 with the 2-1/4" 2105-77 Tile Geometric - Dk. Blue and the 1-7/8" strips of 2108-55 Leaf Abstract – Purple, 2106-72 Dot Geometric – Turquoise, and 7101-11 Urban Legend - Lt. Blue to make twenty-four units (*figure 2*).

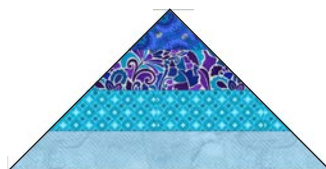


Figure 2 – Make 24.

3. Sew a 2105-29 Tile Geometric – Fuchsia triangle A to adjacent sides of a 2-1/2" 2104-22 Ditsy Floral – Pink square (*figure 3*). Press open. Repeat to make twenty-four units.



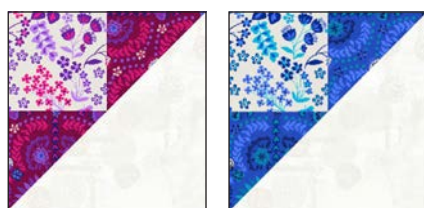
Figure 3 – Make 24 units.

4. Repeat Step 3 with the 2105-77 Tile Geometric – Dk. Blue triangles A and the 2-1/2" 2104-70 Ditsy Floral – Blue squares to make twenty-four units (*figure 4*).



Figure 4 - Make 24 units.

5. Sew a 9570-09 Jot Dot – Marshmallow triangle B to the Step 3 and Step 4 units (*figure 5*). Press open and keep them separated into two piles, Pink and Blue. The units measure 4-1/2".



Pink Blue

Figure 5

6. Draw a diagonal line on the wrong side of the 2-1/2" 2106-72 Dot Geometric – Turquoise squares. With right sides together, place one marked Turquoise square on the Marshmallow corner of one Step 5 Pink unit and stitch on the drawn line. Trim the seam allowance to 1/4" and press open. Repeat with the remaining Pink units.

Similarly, sew the 2-1/2" 2111-55 Monochromatic Mini Jacobean – Purple squares to the Blue units (*figure 6*).

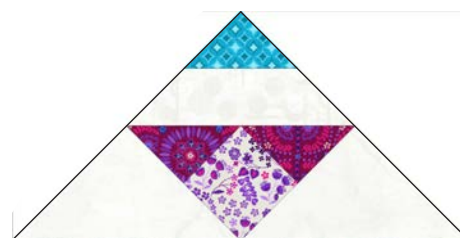


Pink

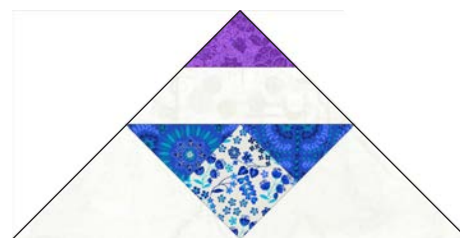
Blue

Figure 6

7. Sew a 9570-09 Jot Dot – Marshmallow triangle B to adjacent sides of a Step 6 unit. Press open. Repeat with all the Step 6 units (*figure 7*).



Pink Units



Blue Units

Figure 7

8. Sew together the Step 1 and the Step 7 Pink Units. Press the seams toward the strips. Repeat with the Step 2 and the Step 7 Blue Units (*figure 8*). The blocks measure 8-1/2".



Figure 8 – Make (24) of each.

Millicent - Quilt 1

Page 4

Assemble Quilt Top

9. Referring to the quilt photo for block placement, lay out six blocks in eight rows. Join the blocks together in each row and press the seams in one direction.

10. For border 1, sew six 2-1/2" 9570-09 Jot Dot – Marshmallow strips together end to end using diagonal seams. Measure the vertical length of the quilt top through the center and cut two border strips that length. Sew one strip to each side of the quilt top. Measure the width of the quilt top through the center. Cut two border strips that length and sew one to the top and one to the bottom. Press the seams toward the borders.

11. Repeat Step 10 with the seven 2-1/2" 2112-41 Paisley - Ivory strips to make and add border 2.

12. Repeat Step 10 with the seven 1-1/2" 9570-09 Jot Dot – Marshmallow strips to make and add border 3.

13. Repeat Step 10 with the seven 1-1/2" 9570-77 Jot Dot - Dk. Blue strips to make and add border 4.

14. Repeat Step 10 with the eight 4-1/2" 2103-99 Jacobean Floral – Black strips to make and add border 5.

Finishing

15. Create a quilt sandwich with the batting between the quilt top and the backing. Pin or baste layers together, mark quilting design, and quilt by hand or machine. When quilting is complete, remove pins or basting, and trim batting and backing even with raw edges of the quilt top.

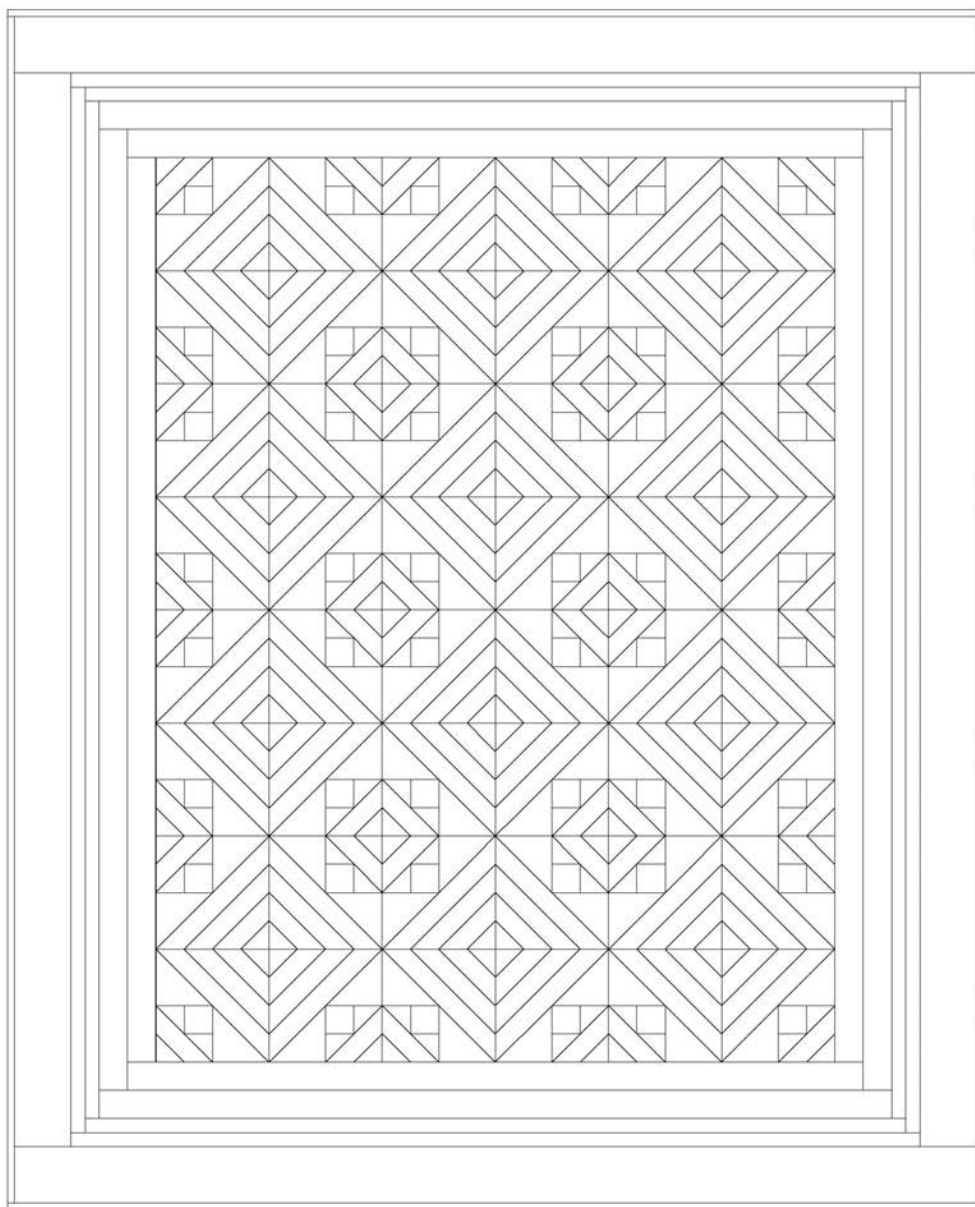
16. Join the eight 2-1/2" 9570-77 Jot Dot - Dk. Blue binding strips together end to end using a diagonal seam to make one long strip. Fold in half lengthwise and press. Sew binding to the edges of the quilt, mitering corners, and overlapping ends. Fold binding to the back of the quilt and stitch it in place by hand to finish.

©2021 Blank Quilting Corporation

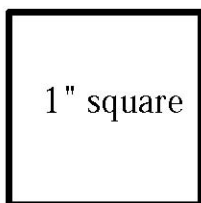
Every effort has been made to ensure that all projects are error free. All the information is presented in good faith; however, no warranty can be given nor results guaranteed as we have no control over the execution of instructions. Therefore, we assume no responsibility for the use of this information or damages that may occur as a result. When errors are brought to our attention, we make every effort to correct and post a revision as soon as possible. Please make sure to check www.blankquilting.net for pattern updates prior to starting the project. We also recommend that you test the project prior to cutting for kits. Finally, all free projects are intended to remain free to you and are not for resale.

Millicent - Quilt 1

Page 5



Quilt Diagram



Print on legal size paper - 8-1/2" x 14".

