

Millicent

by Satin Moon Designs

Quilt design by Denise Russell.



Quilt size: 75" x 88"

Skill Level: Intermediate

Blank Quilting Corporation

49 West 37th Street ♦ New York, NY 10018

Tel: 800-294-9495 ♦ Fax: 212-679-4578

www.blankquilting.net

facebook

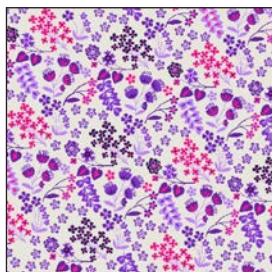
Free Project

NOT FOR RESALE

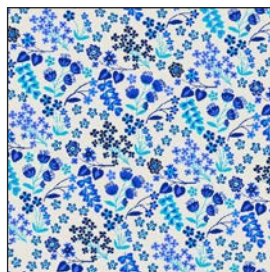
Millicent - Fabrics in the Collection



2103-99 Jacobean
Floral - Black



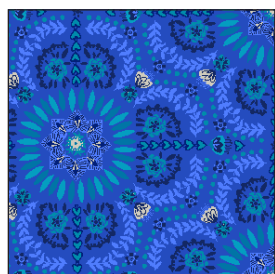
2104-22 Ditsy Floral
Pink



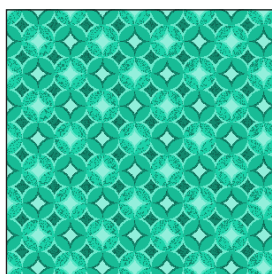
2104-70 Ditsy Floral
Blue



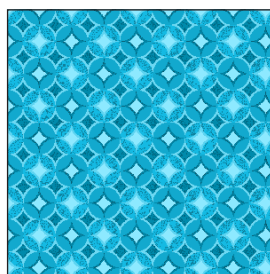
2105-29 Tile
Geometric - Fuchsia



2105-77 Tile
Geometric - Dk. Blue



2106-67 Dot
Geometric - Aqua



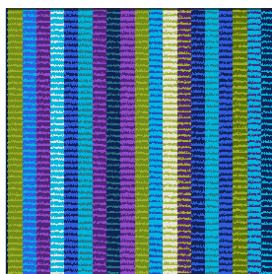
2106-72 Dot
Geometric - Turquoise



2107-55 Monochromatic
Jacobean - Purple



2108-55 Leaf
Abstract - Purple



2109-70 Stripe
Lt. Blue



2110-99 Vine
Black

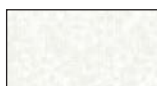


2111-55 Monochromatic
Mini Jacobean - Purple



2112-41 Paisley
Ivory

Selected fabrics from the
Jot Dot I and II Collections



9570-09
Marshmallow



9570-22
Fuchsia



9570-70
Powder Blue

Millicent - Quilt 2

Page 1

Materials

Yardages and cutting instructions are based on 42" of usable fabric width.

1/3 yard 9570-22 Jot Dot - Fuchsia
3/8 yard 2106-67 Dot Geometric - Aqua
3/8 yard 2108-55 Leaf Abstract - Purple
1/2 yard 9570-70 Jot Dot - Powder Blue
1/2 yard 2105-29 Tile Geometric - Fuchsia
1/2 yard 2105-77 Tile Geometric - Dk. Blue
1/2 yard 2107-55 Monochromatic Jacobean - Purple
1/2 yard 2110-99 Vine - Black
2/3 yard 2104-70 Ditsy Floral - Blue
1 yard 2103-99 Jacobean Floral - Black
1-1/8 yards 2111-55 Monochromatic Mini Jacobean - Purple
4-1/3 yards 9570-09 Jot Dot - Marshmallow
5-1/2 yards 2112-41 Paisley - Ivory for backing
83" x 96" piece of Air Lite® Colour Me 100% Cotton batting

Cut Fabrics

Note: All strips are cut across the width of the fabric (WOF) from selvage to selvage unless otherwise indicated.

From 9570-22 Jot Dot – Fuchsia:

*Cut five 1-1/2" x WOF strips.

From each:

2106-67 Dot Geometric – Aqua

2108-55 Leaf Abstract - Purple

*Cut two 5-1/2" x WOF strips. Sub-cut twenty-four 3" x 5-1/2" rectangles.

From 9570-70 Jot Dot - Powder Blue:

*Cut one 1-1/2" x WOF strip.

*Cut two 5-1/2" x WOF strips. Sub-cut twenty-four 3" x 5-1/2" rectangles and twenty 1-1/2" squares (cornerstones).

From each:

2105-29 Tile Geometric - Fuchsia

2105-77 Tile Geometric - Dk. Blue

2107-55 Monochromatic Jacobean - Purple

2110-99 Vine – Black

*Cut two 3" x WOF strips. Sub-cut twenty-four 3" squares.

*Cut two 3-3/8" x WOF strips. Sub-cut twenty-four 3-3/8" squares.

From 2104-70 Ditsy Floral – Blue:

*Cut four 5-1/2" x WOF strips. Sub-cut forty-eight 3" x 5-1/2" rectangles.

From 2103-99 Jacobean Floral – Black:

*Cut eight 3-1/2" x WOF strips for border 2.

From 2111-55 Monochromatic Mini Jacobean – Purple:

*Cut two 3" x WOF strips. Sub-cut twenty-four 3" squares.

*Cut two 3-3/8" x WOF strips. Sub-cut twenty-four 3-3/8" squares.

*Cut nine 2-1/2" x WOF strips for binding.

From 9570-09 Jot Dot – Marshmallow:

*Cut twelve 1-1/2" x WOF strips.

*Cut nine 3" x WOF strips. Sub-cut 120 3" squares.

*Cut seven 3-1/2" x WOF strips. Sub-cut thirty-one 3-1/2" x 6-1/2" rectangles and forty 1-1/2" x 3-1/2" strips.

*Cut five 6-1/4" x WOF strips. Sub-cut thirty 6-1/4" squares.

*Cut two 8-1/2" x WOF strips. Sub-cut eighteen 3-1/2" x 8-1/2" rectangles.

*Cut nine 1-1/2" x WOF strips for border 3.

*Cut eight 2-1/2" x WOF strips for border 1.

Assemble Blocks

Measurements include 1/4" seam allowances. Sew with right sides together unless otherwise stated. If no direction is specified, press the seam toward the darker fabric.

Refer to Table 1 next page for the fabric combinations for each block. Blocks 1 to 5 are made with flying geese, using two different methods.

Millicent - Quilt 2

Page 2

 <p>Block 1 - Make 6. Fabrics: 2111-55 Monochromatic Mini Jacobean – Purple 2108-55 Leaf Abstract – Purple</p>	 <p>Block 2 - Make 6. Fabrics: 2105-77 Tile Geometric – Dk. Blue 2106-67 Dot Geometric – Aqua</p>	 <p>Block 3 - Make 6. Fabrics: 2105-29 Tile Geometric – Fuchsia 2104-70 Ditsy Floral – Blue</p>
 <p>Block 4 - Make 6. Fabrics: 2107-55 Monochromatic Jacobean – Purple 2104-70 Ditsy Floral – Blue</p>	 <p>Block 5 - Make 6. Fabrics: 2110-99 Vine – Black 9570-70 Jot Dot – Powder Blue</p>	

Table 1. Fabric combinations for each block.

1. Mark a diagonal line on the wrong side of the 3-3/8" 2111-55 Monochromatic Mini Jacobean – Purple squares. With right sides together, place two marked Purple squares on opposite corners of one 6-1/4" 9570-09 Jot Dot – Marshmallow square, making sure drawn lines are intersecting in the middle and noting that the corners of the small squares will overlap. Stitch 1/4" on each side of the marked line (a), cut on the drawn line (b), and press each unit open (c). Place one more marked Purple square on the corner of each unit, stitch as before (d), and cut. Press the seams open (e) to make four 3" x 5-1/2" flying-geese units. Repeat with the remaining 3-3/8" Purple and the 6-1/4" Marshmallow squares to make a total of twenty-four flying-geese units (*figure 1*).

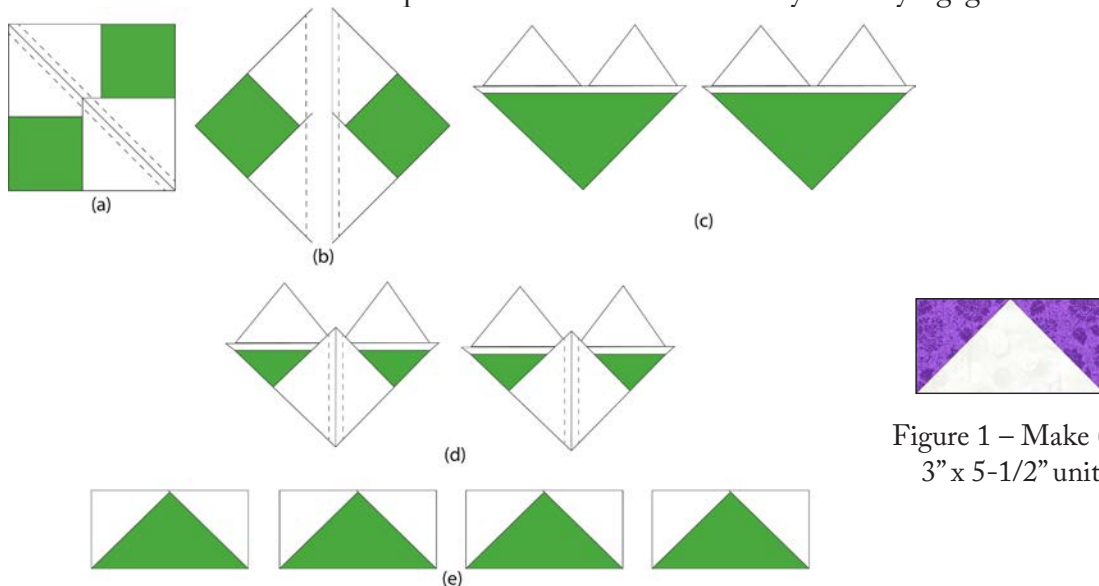


Figure 1 – Make (24)
 3" x 5-1/2" units.

Millicent - Quilt 2

Page 3

2. Draw a diagonal line on the wrong side of the 3" 2111-55 Monochromatic Mini Jacobean – Purple squares. With right sides together, layer a marked Purple square on the right short end of a 3" x 5-1/2" 2108-55 Leaf Abstract – Purple rectangle, and stitch on the drawn line. Trim 1/4" away from the seam line and press open. Similarly, stitch a 3" 9570-09 Jot Dot – Marshmallow square to the opposite end of the same rectangle (*figure 2*). Repeat to make a total of twenty-four flying-geese units.



Figure 2 – Make (24) 3" x 5-1/2" units.

3. Sew the Step 1 and Step 2 units together as shown below and press the seams toward the light fabric. Noting unit orientation, sew the units two-by-two to make twelve rows. Press the seams toward the dark fabric. Sew the rows together to make six 10-1/2" blocks (*figure 3*). Press the seams open.



Figure 3 – Make (6) 10-1/2" blocks.

4. Repeat Steps 1-3 with the fabrics listed below to make a total of thirty assorted 10-1/2" blocks shown in Table 1, page 2.

- 3" 9570-09 Jot Dot - Marshmallow squares
- 3" and 3-3/8" squares of 2105-77 Tile Geometric - Dk. Blue, 2105-29 Tile Geometric - Fuchsia, 2107-55 Monochromatic Jacobean - Purple, and 2110-99 Vine - Black
- 6-1/4" 9570-09 Jot Dot - Marshmallow squares
- 3" x 5-1/2" rectangles of 2106-67 Dot Geometric - Aqua, 2104-70 Ditsy Floral - Blue, and 9570-70 Jot Dot - Powder Blue.

5. Sew one 1-1/2" 9570-09 Jot Dot – Marshmallow strip to each side of a 1-1/2" 9570-22 Jot Dot – Fuchsia strip. Press the seams toward the center. Repeat to make five strip sets. Cross-cut the strip sets into eighty 2-1/2" sections. Sew one section to each end of a 3-1/2" x 6-1/2" 9570-09 Jot Dot – Marshmallow rectangle and press the seams toward the center (*figure 4*). Repeat with the remaining 3-1/2" x 6-1/2" Marshmallow rectangles to make thirty-one 3-1/2" x 10-1/2" inner sashing units.

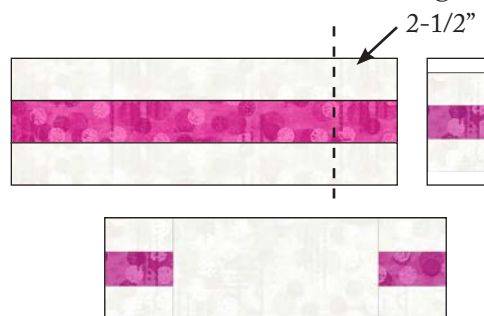


Figure 4 – Make (31) 3-1/2" x 10-1/2" units.

6. Sew one of the leftover Step 5 sections to the left short end of a 3-1/2" x 8-1/2" 9570-09 Jot Dot – Marshmallow rectangle (*figure 5*). Press the seam toward the rectangle. Repeat to make eighteen 3-1/2" x 10-1/2" outer sashing units.



Figure 5 – Make (18) 3-1/2" x 10-1/2" units.

7. Sew a 1-1/2" 9570-09 Jot Dot – Marshmallow to both sides of a 1-1/2" 9570-70 Jot Dot - Powder Blue strip. Press the seams toward the center. Cross-cut the strip set into twenty 1-1/2" sections. Sew one 1-1/2" x 3-1/2" 9570-09 Jot Dot – Marshmallow

Millicent - Quilt 2

Page 4

rectangle to the top and one to the bottom of each section (figure 6). Press the seams away from the center. Make a total of twenty 3-1/2" cornerstone units.



Figure 6 – Make (20) 3-1/2" units.

Assemble Quilt Top

8. Referring to the quilt photo for block placement and sashing orientation, lay out five alternating blocks and the 3-1/2" x 10-1/2" sashing units as follows:

- Rows 1 and 6: five blocks and four outer sashings.
- Rows 2 – 5: five blocks and four inner sashings.

Join the blocks and sashing strips together in each row. Press the seams toward the sashing.

9. To make the horizontal sashing strips, lay out an outer sashing unit, four cornerstones, and three inner sashing units, and end with an outer sashing unit. Sew them together and press the seams toward the sashing. Repeat to make a total of five strips. Press the seams toward the sashing.

10. Matching adjacent seams, sew block rows and horizontal sashing strips together. Press the seams in one direction.

11. For border 1, sew the eight 2-1/2" 9570-09 Jot Dot – Marshmallow strips together end to end using diagonal seams. Measure the vertical length of the quilt top through the center and cut two border strips that length. Sew one strip to each side of the quilt top. Measure the width of the quilt top through the center. Cut two border strips that length and sew one to the top and one to the bottom. Press the seams toward the borders.

12. Repeat Step 11 with the eight 3-1/2" 2103-99 Jacobean Floral – Black strips to make and add border 2.

13. Repeat Step 11 with the nine 1-1/2" 9570-09 Jot Dot – Marshmallow strips to make and add border 3.

Finishing

14. Create a quilt sandwich with the batting between the quilt top and the backing. Pin or baste layers together, mark quilting design, and quilt by hand or machine. When quilting is complete, remove pins or basting, and trim batting and backing even with raw edges of the quilt top.

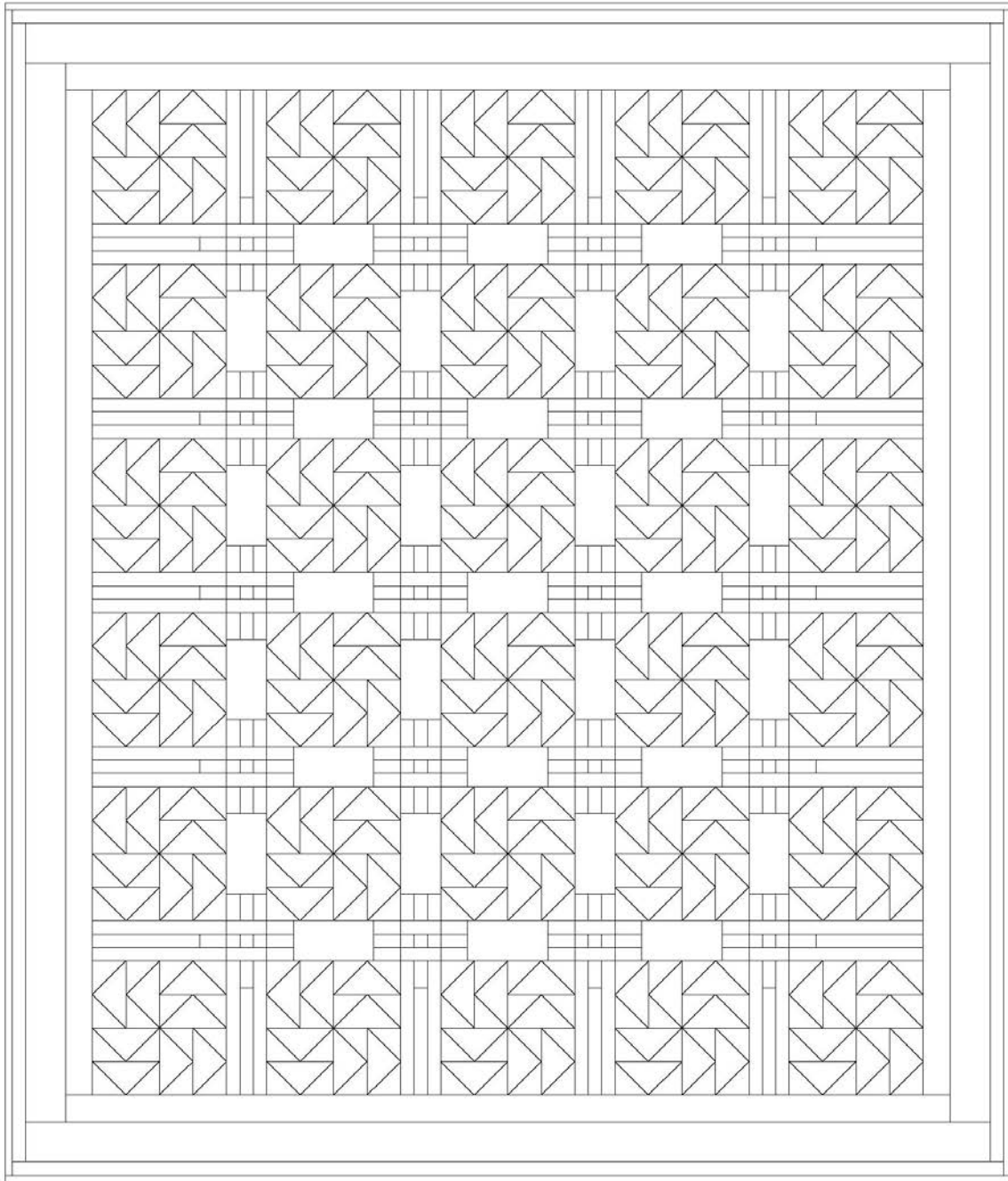
15. Join the nine 2-1/2" 2111-55 Monochromatic Mini Jacobean – Purple binding strips together end to end using a diagonal seam to make one long strip. Fold in half lengthwise and press. Sew binding to the edges of the quilt, mitering corners, and overlapping ends. Fold binding to the back of the quilt and stitch it in place by hand to finish.

©2021 Blank Quilting Corporation

Every effort has been made to ensure that all projects are error free. All the information is presented in good faith; however, no warranty can be given nor results guaranteed as we have no control over the execution of instructions. Therefore, we assume no responsibility for the use of this information or damages that may occur as a result. When errors are brought to our attention, we make every effort to correct and post a revision as soon as possible. Please make sure to check www.blankquilting.net for pattern updates prior to starting the project. We also recommend that you test the project prior to cutting for kits. Finally, all free projects are intended to remain free to you and are not for resale.

Millicent - Quilt 2

Page 5



Quilt Diagram