

Nature Trail

by Nutshell Designs



Quilt design by Denise Russell.

Quilt size: 69-1/2" x 81-1/2"

Skill Level: Advanced Beginner

Blank Quilting Corporation
49 West 37th Street ♦ New York, NY 10018
Tel: 800-294-9495 ♦ Fax: 212-679-4578
www.blankquilting.net

facebook

Free Project
NOT FOR RESALE

Nature Trail - Fabrics in the Collection



1232-39 Blocks - Brown



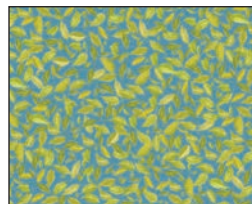
1243P-66 36" Panel - Green



1233-36 Tossed Animals
Taupe



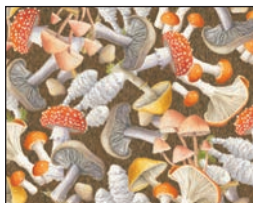
1234-66 Scenic Forest
Green



1235-60 Leaves
Lt. Green



1236-60 Bugs
Lt. Green



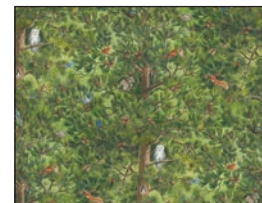
1237-39 Mushrooms
Brown



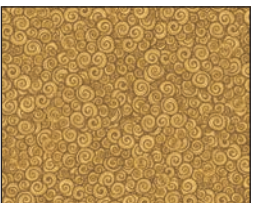
1238-30 Mushrooms
and Bugs - Tan



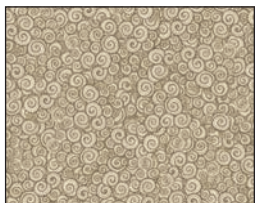
1239-36 Snails
Taupe



1240-66 Trees with Birds
and Animals - Green



1241-30 Scroll
Gold

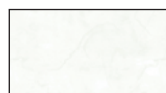


1241-32 Scroll
Lt. Brown



1242-66 Hedgehog
Green

Selected fabric from the Urban Legend Collection by Tana Mueller



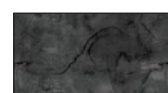
7101-01 White



7101-35 Fawn



7101-41 Ivory



7101-99 Charcoal

Nature Trail - Quilt 2

Materials

Yardages and cutting instructions are based on 42" of usable fabric width.

1/4 yard 1239-36 Snails - Taupe
1/4 yard 1238-30 Mushrooms and Bugs - Tan
1/4 yard 1236-60 Bugs - Lt. Green
1/4 yard 1237-39 Mushrooms - Brown
1/4 yard 1242-66 Hedgehog - Green
2/3 yard 7101-35 Urban Legend - Fawn
2/3 yard 7101-99 Urban Legend - Charcoal
7/8 yard 7101-41 Urban Legend - Ivory
7/8 yard 1241-32 Scroll - Lt. Brown
1-1/8 yards 1233-36 Tossed Animals - Taupe
1-3/8 yards 1232-39 Blocks - Brown
2-2/3 yards 7101-01 Urban Legend - White
4-1/2 yards 1240-66 Trees with Birds and Animals - Green for backing
78" x 90" piece of Air Lite batting

Cut Fabrics

Note: All strips are cut across the width of the fabric (WOF) from selvage to selvage unless otherwise noted. If cut across the length of the fabric (LOF), the LOF notation will be indicated.

From each:

1239-36 Snails - Taupe

1236-60 Bugs - Lt. Green

*Cut one 4-1/2" x WOF strip. Sub-cut three 4-1/2" squares.

From 1238-30 Mushrooms and Bugs - Tan:

*Cut one 4-1/2" x WOF strip. Sub-cut four 4-1/2" squares.

From each:

1237-39 Mushrooms - Brown

1242-66 Hedgehog - Green

*Cut one 4-1/2" x WOF strip. Sub-cut two 4-1/2" squares.

From 7101-35 Urban Legend - Fawn:

*Cut three 2-7/8" x WOF strips. Sub-cut thirty 2-7/8" squares; cut once diagonally. (A)

*Cut three 4" x WOF strips. Sub-cut sixty 1-7/8" x 4" strips.

From 7101-99 Urban Legend - Charcoal:

*Cut eight 2-1/2" x WOF strips for binding.

From 7101-41 Urban Legend - Ivory:

*Cut two 4-1/4" x WOF strips. Sub-cut fifteen 4-1/4" squares.

*Cut four 4-1/2" x WOF strips. Sub-cut sixty 2-1/2" x 4-1/2" rectangles.

From 1241-32 Scroll - Lt. Brown:

*Cut four 4-1/4" x WOF strips. Sub-cut thirty 4-1/4" squares.

*Cut seven 1-1/4" x WOF strips for border 2.

From 1233-36 Tossed Animals - Taupe:

*Cut one 4-1/2" x WOF strip. Sub-cut one 4-1/2" squares.

*Cut eight 3-1/2" x WOF strips for border 3.

From 1232-39 Blocks - Brown:

*Fussy-cut fifteen 9-1/2" blocks.

From 7101-01 Urban Legend - White:

*Cut two 1-7/8" x WOF strips. Sub-cut thirty 1-7/8" squares; cut once diagonally. (B)

*Cut three 2" x WOF strips. Sub-cut sixty 2" squares.

*Cut twelve 2-3/8" x WOF strips. Sub-cut 180 2-3/8" squares.

*Cut two 5-1/4" x WOF strips. Sub-cut fifteen 5-1/4" squares; cut twice diagonally. (C)

*Cut five 6-1/4" x WOF strips. Sub-cut thirty 6-1/4" squares; cut twice diagonally. (D)

*Cut seven 1-1/2" x WOF strips for border 1.

Assemble Blocks

Note: Measurements include 1/4" seam allowances. Sew with right sides together unless otherwise stated. If no direction is specified, press seams toward the darker fabric.

1. Sew one 7101-35 Urban Legend - Fawn triangle A to each end of a 2-1/2" x 4-1/2" 7101-41 Urban Legend - Ivory rectangle (*figure 1*). Press the seams toward rectangle. Repeat to make thirty strips.



Figure 1 - Make 30.

2. Sew two 2-1/2" x 4-1/2" 7101-41 Urban Legend – Ivory rectangles to opposite sides of a 4-1/2" 1239-36 Snails – Taupe square. Repeat with the two other Snails Taupe squares. Press the seams toward rectangles. Sew one step 1 strip to the top and one to the bottom of the units (*figure 2*).



Figure 2 – Make 3.

3. Sew four 7101-01 Urban Legend – White triangles C to each corner of the step 2 units (*figure 3*). Press the seams toward triangles and trim ears. The block centers will measure 9".



Figure 3

4. Sew one 7101-01 Urban Legend – White triangle D to each long edge of one 1-7/8" x 4" 7101-35 Urban Legend – Fawn strip. Press the seams toward triangles. Sew one 7101-01 Urban Legend – White triangle B to the top (*figure 4*). Press the seams toward triangle and trim ears. Repeat to make sixty units.



Figure 4 – Make 60.

5. Sew two step 4 units to opposite sides of a step 3 block center. Press the seams away from the center. Repeat with the other sides to make three 12-1/2" blocks (*figure 5*). Trim block to size if necessary.



Figure 5 – Make 3.

6. Repeat steps 2 – 6 with the 4-1/2" 1238-30 Mushrooms and Bugs – Tan, 1236-60 Bugs - Lt. Green, 1237-39 Mushrooms – Brown, 1242-66 Hedgehog – Green, and 1233-36 Tossed Animals – Taupe squares to make a total of fifteen 12-1/2" blocks (*figure 6*).



Block 2 - Make 4.



Block 3 – Make 3.



Block 4 – Make 2.



Block 5 – Make 2.



Block 6 – Make 1.

Figure 6

Nature Trail - Quilt 2 Page 3

7. Mark a diagonal line on the wrong side of the 2-3/8" 7101-01 Urban Legend - White squares. With right sides together, place two marked White squares on opposite corners of one 4-1/4" 1241-32 Scroll - Lt. Brown square, making sure drawn lines are intersecting in the middle and noting that the corners of small squares will overlap. Stitch 1/4" on each side of the marked line (a), cut on the drawn line (b), and press each unit open (c). Place one more marked White square on the corner of each unit, stitch as before (d), and cut. Press the seams open (e) to make four 2" x 3-1/2" flying-geese units (figure 7). Repeat with the remaining 2-3/8" 7101-01 Urban Legend - White and the 4-1/4" 1241-32 Scroll - Lt. Brown squares to make a total of 120 flying-geese units (figure 7).

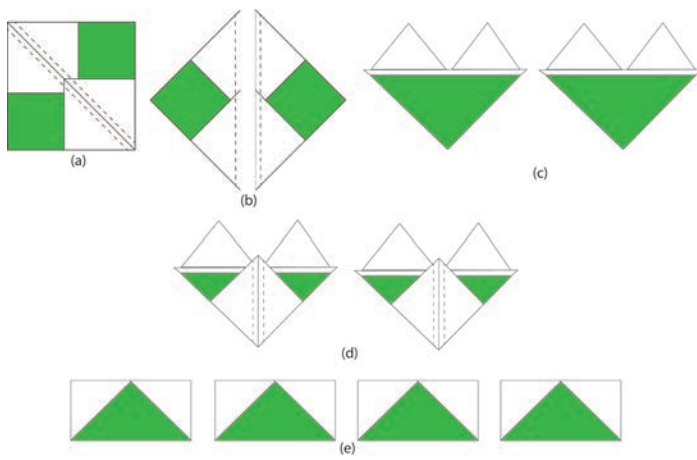


Figure 7 – Make 120.

8. Repeat step 7 with the remaining 2-3/8" 7101-01 Urban Legend - White squares and the fifteen 4-1/4" 7101-41 Urban Legend - Ivory squares to make sixty 2" x 3-1/2" flying-geese units (figure 8).



Figure 8 – Make 60.

9. Sew together two step 7 and one step 8 flying geese to make sixty strips. Press the seams open. Sew two

strips to opposite sides of a 9-1/2" 1232-39 Blocks – Brown square (figure 9). Press the seams toward the center. Repeat to make fifteen center strips.



Figure 9 – Make 15.

10. Sew two 2" 7101-01 Urban Legend - White squares to opposite ends of the remaining thirty step 9 flying geese strips. Press the seams toward squares. Sew one strip to the top and one to the bottom of the step 9 center strips to make fifteen 12-1/2" blocks, trimming them to size if necessary (figure 10).



Figure 10 – Make 15 assorted blocks.

Assemble Quilt Top

11. For border 1, sew the seven 1-1/2" 7101-01 Urban Legend - White strips together end to end using diagonal seams. Measure the vertical length of the quilt top through the center and cut two border strips that length. Sew strips to the sides of the quilt top. Measure the width of the quilt top through its center. Cut two border strips that length and sew one to the top and one to the bottom. Press the seams toward the borders.

12. Repeat step 11 with the seven 1-1/4" 1241-32 Scroll - Lt. Brown strips to make and add border 2.

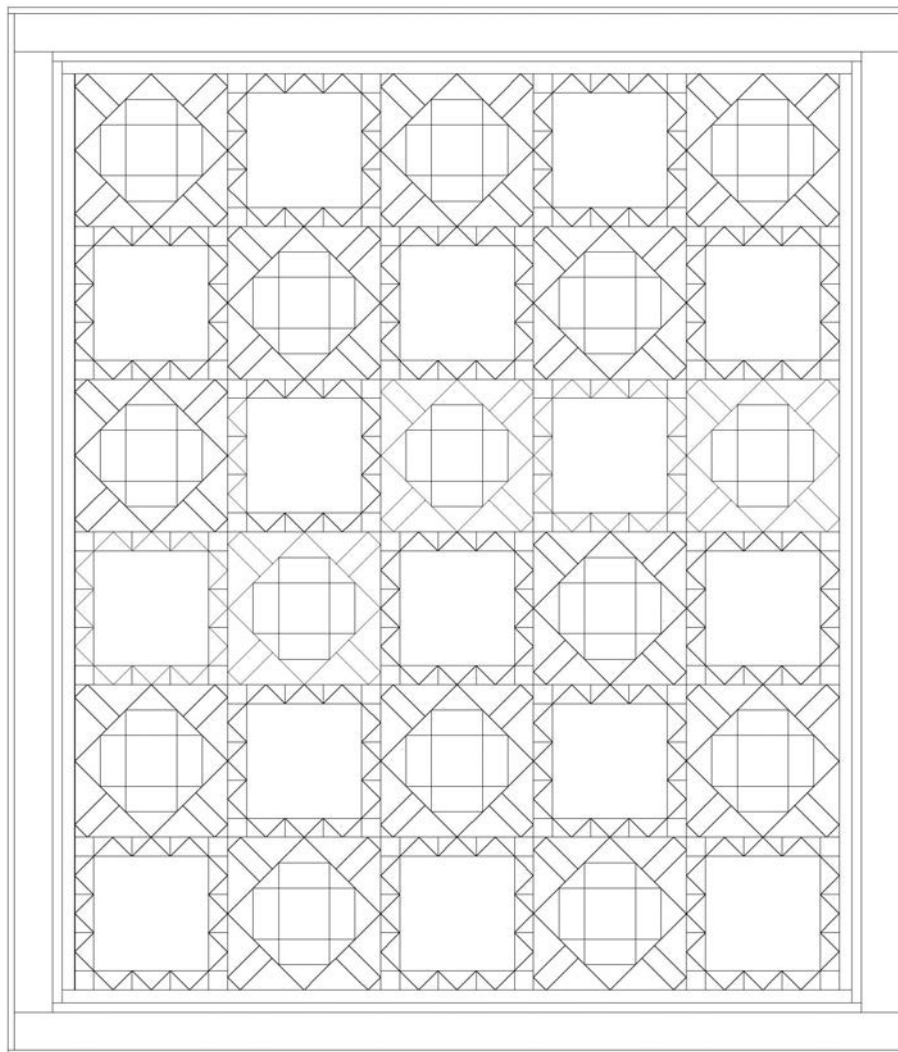
13. Repeat step 11 with the eight 3-1/2" 1233-36 Tossed Animals - Taupe strips to make and add border 3.

Finishing

14. Create a quilt sandwich with the batting between the quilt top and the backing. Pin or baste layers together, mark quilting design, and quilt by hand or machine. When quilting is complete, remove pins or basting and trim batting and backing even with raw

edges of the quilt top.

15. Join the eight 2-1/2" 7101-99 Urban Legend - Charcoal binding strips together end to end using a diagonal seam to make one long strip. Fold in half lengthwise and press. Sew binding to the edges of the quilt, mitering corners, and overlapping ends. Fold binding to the back of the quilt and stitch it in place by hand to finish.



Quilt Diagram

©2020 Blank Quilting Corporation

Every effort has been made to ensure that all projects are error free. All the information is presented in good faith; however, no warranty can be given nor results guaranteed as we have no control over the execution of instructions. Therefore, we assume no responsibility for the use of this information or damages that may occur as a result. When errors are brought to our attention, we make every effort to correct and post a revision as soon as possible. Please make sure to check www.blankquilting.net for pattern updates prior to starting the project. We also recommend that you test the project prior to cutting for kits. Finally, all free projects are intended to remain free to you and are not for resale.