



Table
Topper

Ocean Menagerie

by Urban Essence Designs



Quilt design by Denise Russell.

Quilt size: 55" x 55"

Skill Level: Intermediate

Blank Quilting Corporation
49 West 37th Street ♦ New York, NY 10018
Tel: 800-294-9495 ♦ Fax: 212-679-4578
www.blankquilting.net

facebook

Free Project
NOT FOR RESALE

Ocean Menagerie - Fabrics in the Collection



2508-75 Sea Coral
Turquoise



2508-99 Sea Coral
Black



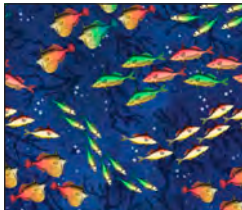
2509-83 Sea Flowers
Coral



2510-99 Jelly Fish
& Sea Horses - Black



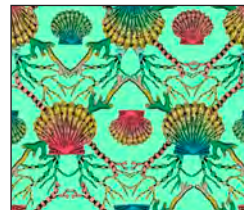
2511-77 Underwater
Scene - Navy



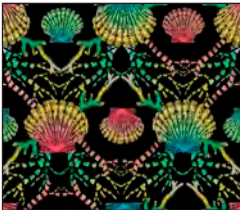
2512-77 Schools of Fish
Navy



2513-99 Sea Life
Black



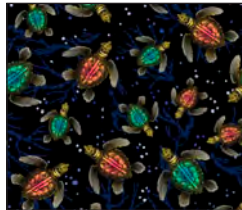
2514-65 Sea Shells
Mint



2514-99 Sea Shells
Black



2515-76 Starfish
Dk. Turquoise



2516-99 Sea Turtles
Black

Selected fabrics from the
Jot Dot Collection



9570-09
Marshmallow



9570-42
Med. Yellow



9570-76
Teal

Ocean Menagerie - Table Topper

Page 1

Materials

Yardages and cutting instructions are based on 42" of usable fabric width.

1/8 yard 9570-42 Jot Dot - Med. Yellow
1/4 yard 2514-65 Sea Shells - Mint
1/4 yard 2509-83 Sea Flowers - Coral
1/3 yard 2508-75 Sea Coral - Turquoise
3/8 yard 2512-77 Schools of Fish - Navy
3/8 yard 2516-99 Sea Turtles - Black
1/2 yard 2510-99 Jelly Fish & Sea Horses - Black
1/2 yard 2515-76 Star Fish - Dk. Turquoise
5/8 yard 9570-76 Jot Dot - Teal
1-1/4 yards 2511-77 Underwater Scene - Navy
1-1/3 yards 9570-09 Jot Dot - Marshmallow
3-1/2 yards 2513-99 Sea Life - Black for backing
63" x 63" piece of Air Lite® Colour Me 100% Cotton batting
Paper for foundation piecing.

Cut Fabrics

Note: All strips are cut across the width of the fabric (WOF) from selvaige to selvaige unless otherwise indicated.

From 9570-42 Jot Dot - Med. Yellow:

*Cut one 3-7/8" **A** square.

From 2514-65 Sea Shells - Mint:

*Cut one 6-7/8" **K** square.

From 2509-83 Sea Flowers - Coral:

*Cut one 5" x WOF strip. Sub-cut two 4" x 5" **X2** rectangles and eight 4-1/4" squares; cut twice diagonally (**S** triangles).

From 2508-75 Sea Coral - Turquoise:

*Cut two 3-1/2" x WOF strips. Sub-cut eight 3-1/2" **G** squares and eight 3-1/2" x 6-1/2" **I** rectangles.

From 2512-77 Schools of Fish - Navy:

*Cut three 3-1/2" x WOF strips for border 1.

From 2516-99 Sea Turtles - Black:

*Cut one 9" x WOF strip. Sub-cut two 7" x 9" **Y2** rectangles and sixteen 3-1/2" **H** squares.

From each:

2510-99 Jelly Fish & Sea Horses - Black

2515-76 Star Fish - Dk. Turquoise

*Cut two 6-1/2" x WOF strips. Sub-cut eight 6-1/2" **P** squares.

From 9570-76 Jot Dot - Teal:

*Cut one 3-1/2" x WOF strip. Sub-cut two 3-1/2" x 12-1/2" **O** rectangles and two 2" x 6-1/2" **E** strips.

*Cut six 2-1/2" x WOF strips for binding.

From 2511-77 Underwater Scene - Navy:

*Cut six 6-1/2" x WOF strips for border 2.

From 9570-09 Jot Dot - Marshmallow:

*Cut one 1-1/2" x WOF strip. Sub-cut two 1-1/2" x 12-1/2" **M** strips and two 1" x 6-1/2" **D** strips.

*Cut one 2" x WOF strip. Sub-cut twelve 2" x 3-1/2" **R** strips.

*Cut one 2-1/2" x WOF strip. Sub-cut two 2-1/2" x 6-1/2" **L** rectangles and two 1-1/2" x 3-1/2" **C** strips.

*Cut six 3-1/2" x WOF strips. Sub-cut sixty-four 3-1/2" **Q** squares.

*Cut one 4-1/4" x WOF strip. Sub-cut eight 4-1/4" squares; cut twice diagonally (**S** triangles).

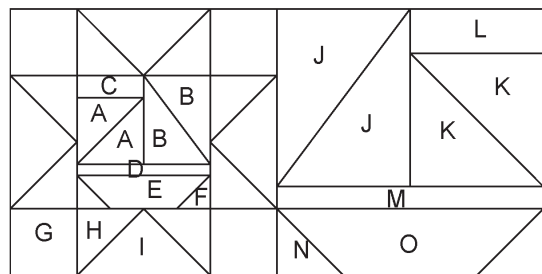
*Cut one 6-7/8" x WOF strip. Sub-cut:

- One 6-7/8" **K** square
- One 3-7/8" **A** square
- Two 4" x 5" **X1** rectangles
- Four 3-1/2" **N** squares
- Four 2" **F** squares

*Cut one 7" x WOF strip. Sub-cut two 7" x 9" **Y1** rectangles and twenty 2" x 3-1/2" **R** strips (for a total of 32).

Assemble Blocks

Notes: Measurements include 1/4" seam allowances. Sew with right sides together unless otherwise stated. If no direction is specified, press the seam toward the darker fabric.



Blocks 1 and 2 - Diagram

1. Draw a diagonal line on the wrong side of the 9570-09 Jot Dot - Marshmallow **A** square. With right sides together, layer the marked **A** square atop the 9570-42 Jot Dot - Med. Yellow **A** square. Stitch $\frac{1}{4}$ " on each side of the marked line, cut on the drawn line, press each unit open with seams toward the dark fabric, and trim dog ears. Repeat with the Marshmallow and 2509-83 Sea Flowers - Coral **K** squares. Make two 3-1/2" yellow and two 6-1/2" mint half-square triangles (HST). Add a Marshmallow **C** strip to the top of the Yellow HSTs and a Marshmallow **L** strip to the top of the Mint HSTs. Press seams toward the strips (*figure 1*).



Figure 1 - Make 2 of each.

2. Trace or print two copies each of template X and Y. Paper piece each section placing each fabric rectangle where noted on the templates. Note that you will place the fabrics on the backside of the templates and will stitch the seams on their printed side (*figure 2*). Press open, trim, and remove the paper. Make two units of each type.

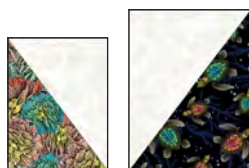


Figure 2 - Make 2 of each.

3. Sew the Step 1 and Step 2 units together as shown below and press the seams open. Sew a Marshmallow **D** strip to the bottom of the yellow units and a

Marshmallow **M** strip to the others (*figure 3*). Press the seams toward the strips.

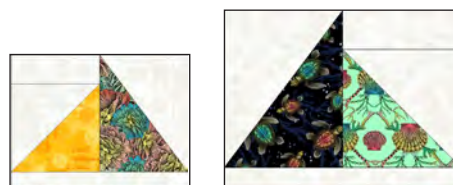
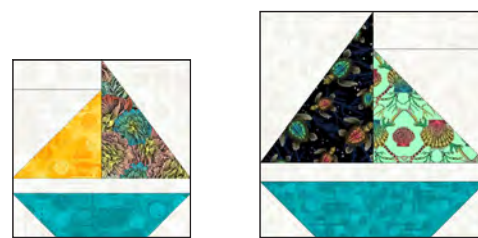


Figure 3 - Make 2 of each.

4. Draw a diagonal line on the wrong side of the Marshmallow **F** and **N** squares. Sew one **F** square to opposite sides of the 9570-76 Jot Dot - Teal **E** rectangles and one **N** square to the Teal **O** rectangles. Trim the seam allowances to $\frac{1}{4}$ " and press open. Sew the **F/E** units to the bottom of the Step 3 yellow units and the **N/O** units to the others (*figure 4*). Press the seams toward the center. The smaller boats measure 6-1/2," and the larger boats measure 12-1/2".



Star block center Completed block
Figure 4

5. Draw a diagonal line on the wrong side of the 2516-99 Sea Turtles - Black **H** squares. With right sides together, layer a marked **H** square on one end of a 2508-75 Sea Coral - Turquoise **I** rectangle and stitch on the drawn line. Trim $\frac{1}{4}$ " away from the seam line and press open. In the same manner, stitch another **H** square to the opposite end of the same rectangle (*figure 5*). Repeat to make eight 3-1/2" x 6-1/2" flying-geese units.



Figure 5 - Make 8.

6. Sew a Step 5 flying geese to opposite sides of the Step 4 6-1/2" boats. Press the seams toward the center. Sew a 2508-75 Sea Coral - Turquoise **G** square to opposite sides of the remaining flying geese to make four rows. Press the seams away from the center. Sew

one row to the top and one to the bottom of each boat to complete two 12-1/2" blocks (*figure 6*). Press the seams open.

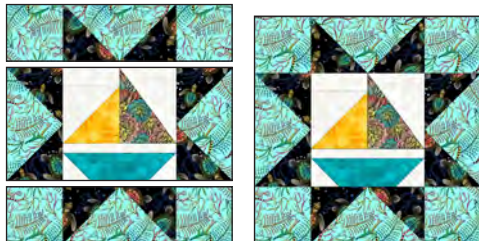
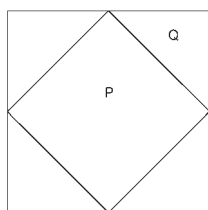


Figure 6 – Make 2.



Block 2 Diagram

7. Draw a diagonal line on the wrong side of the Marshmallow **Q** squares. With right sides together, place one marked **Q** square on a corner of one 2510-99 Jelly Fish & Sea Horses – Black **P** square and stitch on the drawn line. Do the same with the opposite corner of the same square. Trim seam allowances to 1/4" and press open. Repeat with the other corners of the square. Make eight 6-1/2" blocks.

Repeat this step with the remaining **Q** squares and the 2515-76 Star Fish - Dk. Turquoise **P** squares to make eight more 6-1/2" blocks (*figure 7*).

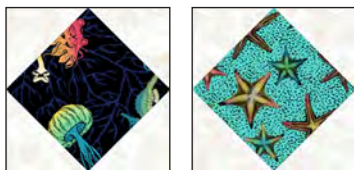
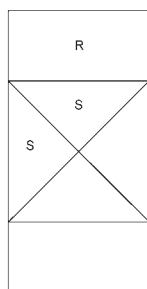


Figure 7 – Make 8 of each.



Block 3 - diagram

8. Sew a 2509-83 Sea Flowers – Coral **S** triangle to a Marshmallow **S** triangle. Press the seam toward the dark fabric. Repeat to make thirty-two units. Sew the units together two-by-two to make sixteen 3-1/2" hourglass blocks. Press the seams open. Sew a Marshmallow **R** strip to the top and one to the bottom of each hourglass to complete the 3-1/2" x 6-1/2" blocks (*figure 8*). Press the seams away from the center.



Figure 8 – Make 16.

Assemble Quilt Top

9. Referring to the quilt photo for block placement, sew together the Step 4 and Step 6 blocks into two rows and press the seams in one direction. Sew the rows together to make the 24-1/2" quilt center. Press the seams open.

10. For border 1, sew three 3-1/2" 2512-77 Schools of Fish – Navy strips together end to end using diagonal seams. Cut two 24-1/2" lengths. Sew one length to each side of the quilt top and press the seams toward the border strips. Measure the width of the quilt top through the center. Cut two border strips that length and sew one to the top and one to the bottom. Press the seams toward the borders. The quilt measures 30-1/2" x 30-1/2" up to here.

11. For border 2 and referring to the quilt photo for block placement, arrange seven blocks for each side of the quilt. Sew blocks together and sew one border strip to each side of the quilt center. Press the seam toward the center.

12. Repeat Step 11 with nine blocks per strip and sew one border strip to the top and one to the bottom of the quilt center.

13. For border 3, sew the six 6-1/2" 2511-77 Underwater Scene – Navy border strips together end to end using diagonal seams. Measure the width of the quilt

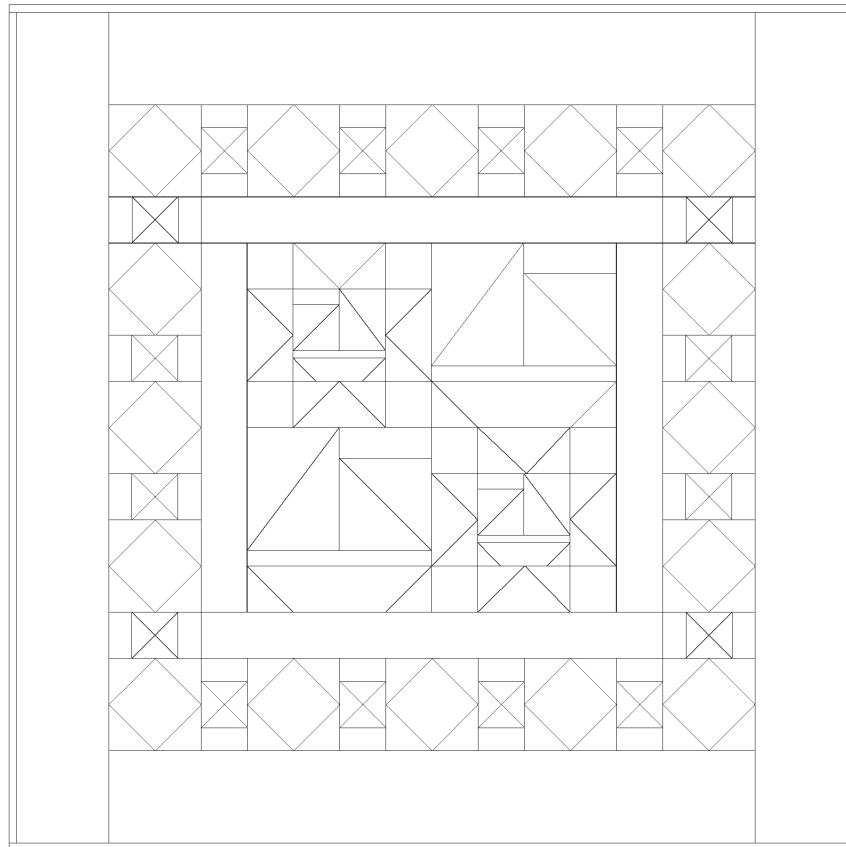
top through the center. Cut two border strips that length and sew one to the top and one to the bottom. Measure the vertical length of the quilt top through the center and cut two border strips that length. Sew one strip to each side of the quilt top. Press the seams toward the borders.

Finishing

14. Create a sandwich with the batting between the quilt top and the backing. Pin or baste layers together,

mark quilting design, and quilt by hand or machine. When quilting is complete, remove pins or basting, and trim batting and backing even with raw edges of the quilt top.

15. Join the eight 2-1/2" 9570-76 Jot Dot – Teal binding strips together end to end using a diagonal seam to make one long strip. Fold in half lengthwise and press. Sew binding to the edges of the quilt, mitering corners, and overlapping ends. Fold binding to the back of the quilt and stitch it in place by hand to finish.

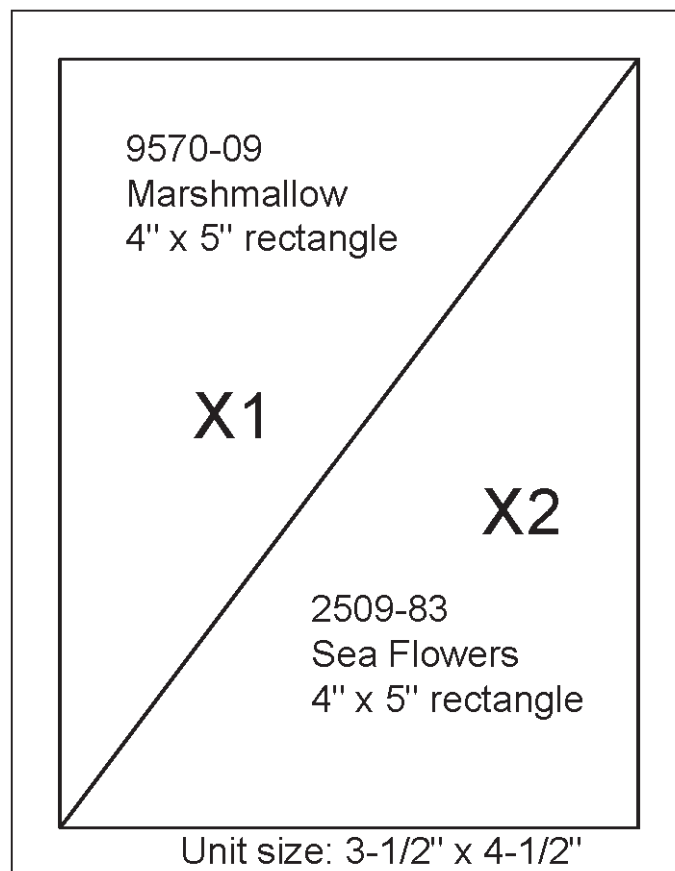


Quilt Diagram

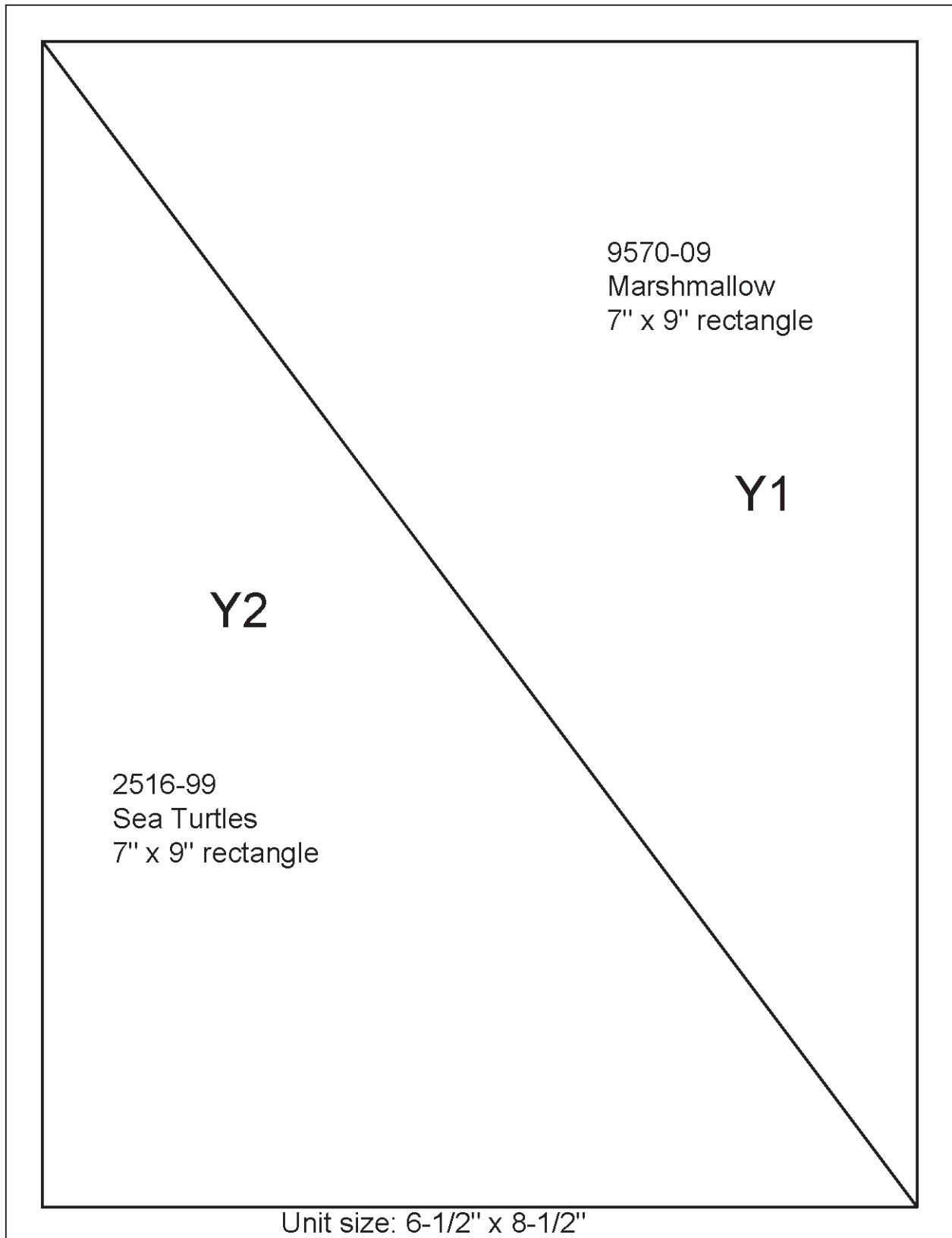
©2022 Blank Quilting Corporation

Every effort has been made to ensure that all projects are error free. All the information is presented in good faith; however, no warranty can be given nor results guaranteed as we have no control over the execution of instructions. Therefore, we assume no responsibility for the use of this information or damages that may occur as a result. When errors are brought to our attention, we make every effort to correct and post a revision as soon as possible. Please make sure to check www.blankquilting.net for pattern updates prior to starting the project. We also recommend that you test the project prior to cutting for kits. Finally, all free projects are intended to remain free to you and are not for resale.

TEMPLATES



SMALL BOAT TEMPLATE



LARGE BOAT TEMPLATE