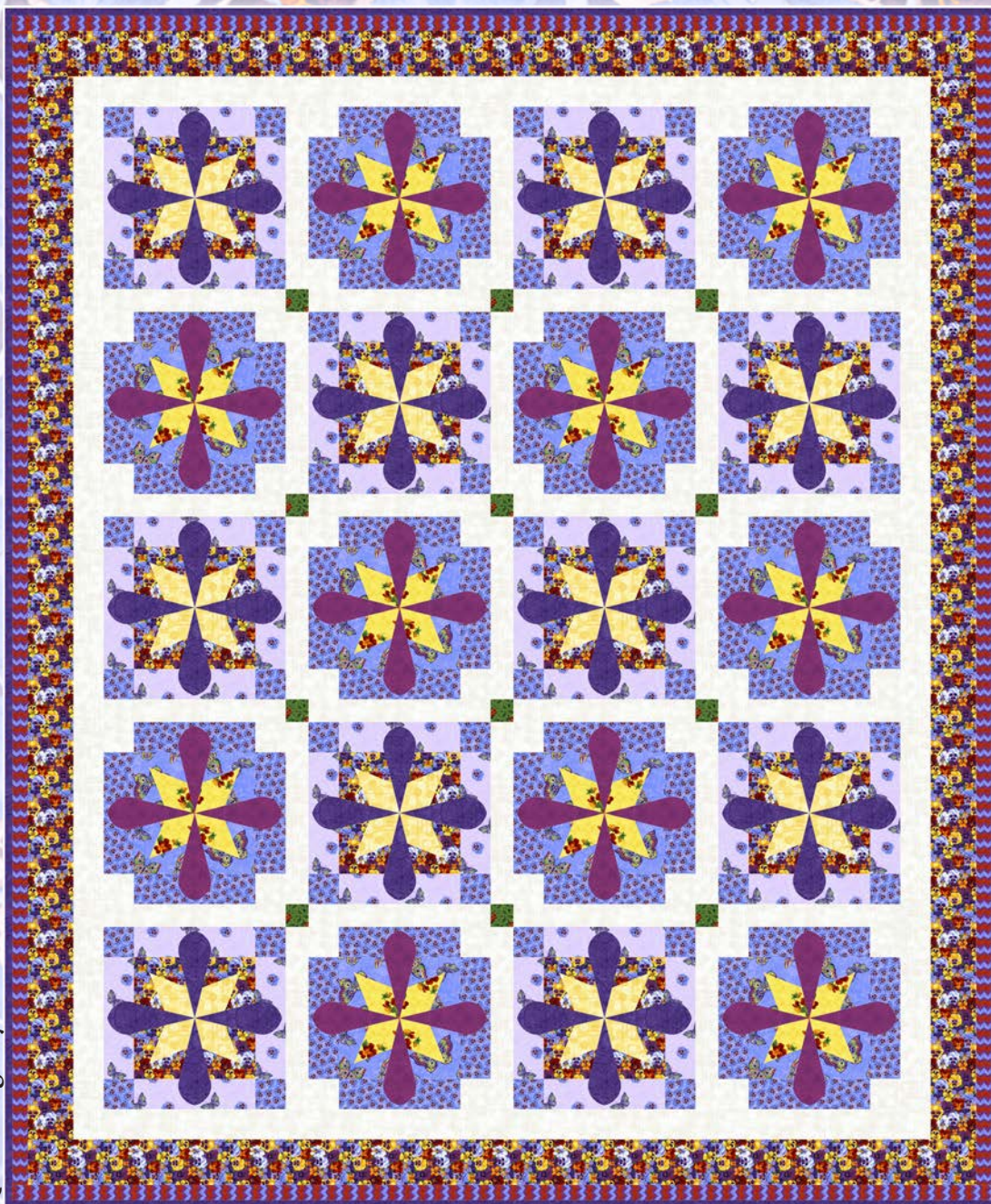


Pansy Prose

by David Galchutt

Quilt design by Denise Russell.



Quilt size: 66" x 79"

Skill Level: Advanced Beginner

Blank Quilting Corporation

49 West 37th Street ♦ New York, NY 10018

Tel: 800-294-9495 ♦ Fax: 212-679-4578

www.blankquilting.net

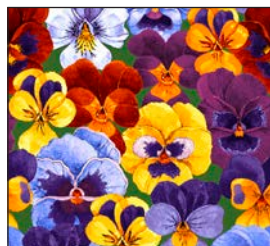
facebook

Free Project
NOT FOR RESALE

Pansy Prose - Fabrics in the Collection



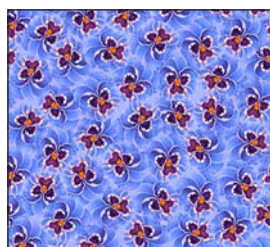
2141-70 Large Pansy
Periwinkle



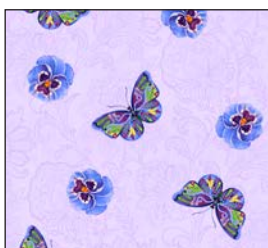
2142-70 Small Pansy
Periwinkle



2143-44 Tossed Pansy
Yellow



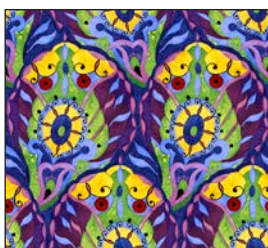
2144-70 Packed Pansy
Periwinkle



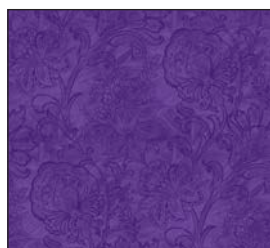
2145-50 Butterfly and
Pansy - Lilac



2146-70 Butterflies
Periwinkle



2147-66 Abstract
Scallop - Green



2148-55 Tonal Jacobean
Purple



2149-58 Tonal Tile
Raspberry



2150-66 Ladybugs
Green



2152P-70 Pansy Panel
Periwinkle



2151-88 Zigzag Stripe
Red

Selected fabrics from the
Jot Dot I Collection



9570-09
Marshmallow



9570-44
Yellow

Pansy Prose - Quilt 2

Page 1

Materials

Yardages and cutting instructions are based on 42" of usable fabric width.

1/8 yard 2150-66 Ladybugs - Green
3/8 yard 2143-44 Tossed Pansy - Yellow
3/8 yard 9570-44 Jot Dot - Yellow
1/2 yard 2151-88 Zigzag Stripe - Red
2/3 yard 2149-58 Tonal Tile - Raspberry
7/8 yard 2144-70 Packed Pansy - Periwinkle
7/8 yard 2145-50 Butterfly and Pansy - Lilac
7/8 yard 2146-70 Butterflies - Periwinkle
1-1/4 yards 2148-55 Tonal Jacobean - Purple
1-1/3 yards 9570-09 Jot Dot - Marshmallow
1-1/2 yards 2142-70 Small Pansy - Periwinkle
4-1/4 yards 2141-70 Large Pansy - Periwinkle
for backing
74" x 87" piece of Air Lite® Colour Me 100%
Cotton batting
Plastic for template
Fusible web

Cut Fabrics

Note: All strips are cut across the width of the fabric (WOF) from selvage to selvage unless otherwise indicated.

From 2150-66 Ladybugs – Green:

*Cut one 2" x WOF strip. Sub-cut twelve 2" squares.

From each:

2143-44 Tossed Pansy – Yellow

9570-44 Jot Dot - Yellow

*Cut ten 4-point stars with template A.

From 2151-88 Zigzag Stripe – Red:

*Cut eight 1-1/2" x WOF strips for border 3.

From 2149-58 Tonal Tile – Raspberry:

*Cut forty petals with template B.

From 2144-70 Packed Pansy – Periwinkle:

*Cut one 2-1/2" x WOF strip. Sub-cut sixteen 2-1/2" squares.

*Cut three 8-1/2" x WOF strips. Sub-cut forty 2-1/2" x 8-1/2" strips and twenty-four 2-1/2" squares (for a total of 40).

From 2145-50 Butterfly and Pansy – Lilac:

*Cut three 8-1/2" x WOF strips. Sub-cut forty 2-1/2" x 8-1/2" strips.

From 2146-70 Butterflies - Periwinkle

*Cut three 8-1/2" x WOF strips. Sub-cut ten 8-1/2" squares.

From 2148-55 Tonal Jacobean – Purple:

*Cut forty petals with template B.

*Cut eight 2-1/2" x WOF strips for binding.

From 9570-09 Jot Dot – Marshmallow:

*Cut three 2-1/2" x WOF strips. Sub-cut forty 2-1/2" squares.

*Cut four 2" x WOF strips. Sub-cut twelve 2" x 12-1/2" strips.

*Cut one 12-1/2" x WOF strip. Sub-cut nineteen 2" x 12-1/2" strips (for a total of 31).

*Cut seven 2-1/2" x WOF strips for border 1.

From 2142-70 Small Pansy – Periwinkle:

*Cut three 8-1/2" x WOF strips. Sub-cut ten 8-1/2" squares.

*Cut seven 3-1/2" x WOF strips for border 2.

Assemble Blocks

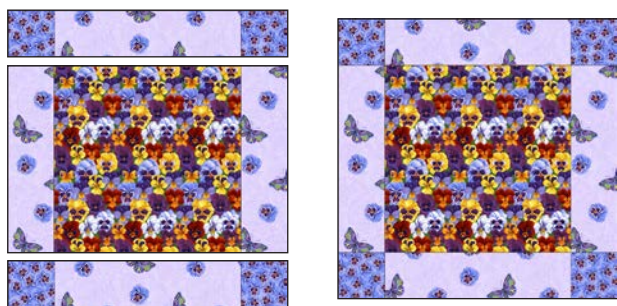
Measurements include 1/4" seam allowances. Sew with right sides together unless otherwise stated. If no direction is specified, press the seam toward the darker fabric.

1. Sew a 2-1/2" x 8-1/2" 2145-50 Butterfly to opposite sides of an 8-1/2" 2142-70 Small Pansy – Periwinkle square. Press the seams away from the center. Repeat to make ten center strips.

Sew a 2-1/2" 2144-70 Packed Pansy – Periwinkle square on opposite ends of the remaining 2-1/2" x 8-1/2" 2145-50 Butterfly and Pansy – Lilac strips. Press the seams toward the center. Sew one strip to the top and one to the bottom of each center strip to make ten 12-1/2" blocks (*figure 1, next page*). Press the seams open.

Pansy Prose - Quilt 2

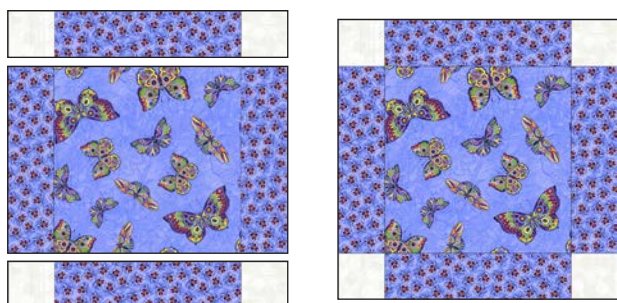
Page 2



Block X

Figure 1 – Make (10) 12-1/2" blocks.

2. Repeat Step 1 with the 2-1/2" x 8-1/2" 2144-70 Packed Pansy – Periwinkle strips, the 8-1/2" 2146-70 Butterflies – Periwinkle squares, and the 2-1/2" 9570-09 Jot Dot – Marshmallow squares to make ten 12-1/2" blocks (*figure 2*).



Block Y

Figure 2 - Make (10) 12-1/2" blocks.

3. Trace the 4-point star and the petal shapes on the plastic for templates. Cut on the outline. Trace the star on the smooth side of the fusible web 20 times and the petal 80 times. Cut them 1/8" outside the outline, then remove the center of the fusible web leaving about 3/8" near the edges of the shapes, making them hollow (*figure 3*).

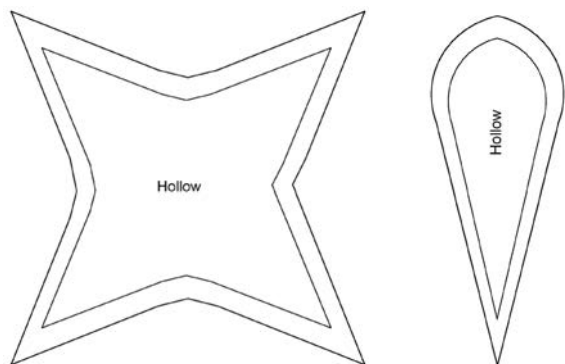


Figure 3

4. Fuse ten stars to the wrong side of the 9570-44 Jot Dot – Yellow fabric, and ten to the 2143-44 Tossed Pansy – Yellow fabric. Cut them on the outline and remove the paper backing. Fold the Step 1 blocks X in half diagonally twice. Using the creased folds as guide-lines, position and fuse the Jot Dot – Yellow stars onto them. Repeat with the Tossed Pansy stars and the Step 2 blocks Y (*figure 4*).

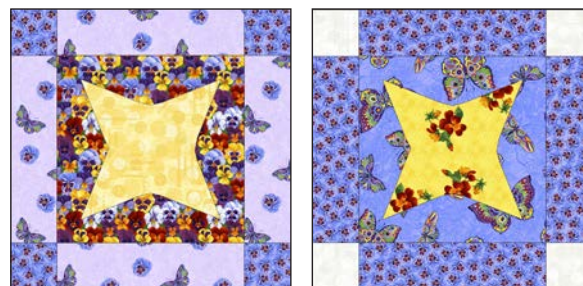


Figure 4.

5. Next, fuse four 2148-55 Tonal Jacobean – Purple petals to the Blocks X and four 2149-58 Tonal Tile – Raspberry petals to the Blocks Y (*figure 5*). Machine appliqué all blocks with matching thread and the blanket stitch.

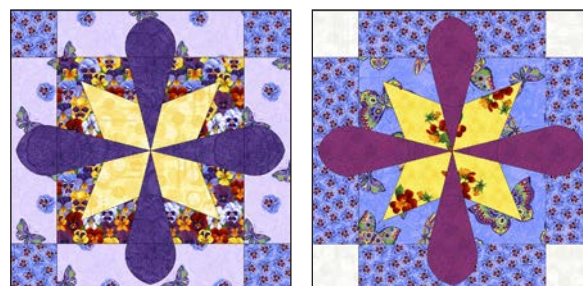


Figure 5 – Make 10 of each.

Assemble Quilt Top

6. Referring to the quilt photo for block placement, lay out the blocks and the 2" x 12-1/2" 9570-09 Jot Dot – Marshmallow sashing strips in five rows, and join the blocks and strips together in each row. Press the seams toward the sashing.

7. To make the horizontal sashing rows, sew together four 2" x 12-1/2" 9570-09 Jot Dot – Marshmallow sashing strips and three 2" 2150-66 Ladybugs – Green

Pansy Prose - Quilt 2

Page 3

cornerstone squares. Repeat to make a total of four sashing strips. Press the seams toward the sashing.

8. Matching adjacent seams, sew block rows and horizontal sashing strips together. Press the seams in one direction.

9. For border 1, sew the seven 2-1/2" 9570-09 Jot Dot – Marshmallow strips together end to end using diagonal seams. Measure the vertical length of the quilt top through the center and cut two border strips that length. Sew one strip to each side of the quilt top. Measure the width of the quilt top through the center. Cut two border strips that length and sew one to the top and one to the bottom. Press the seams toward the borders.

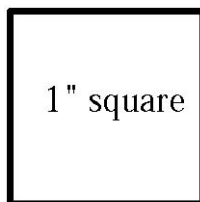
10. Repeat Step 9 with the seven 3-1/2" 2142-70 Small Pansy – Periwinkle strips to make and add border 2.

11. Repeat Step 9 with the eight 1-1/2" 2151-88 Zig-zag Stripe – Red strips to make and add border 3.

Finishing

12. Create a quilt sandwich with the batting between the quilt top and the backing. Pin or baste layers together, mark quilting design, and quilt by hand or machine. When quilting is complete, remove pins or basting, and trim batting and backing even with raw edges of the quilt top.

13. Join the eight 2-1/2" 2148-55 Tonal Jacobean – Purple binding strips together end to end using a diagonal seam to make one long strip. Fold in half lengthwise and press. Sew binding to the edges of the quilt, mitering corners, and overlapping ends. Fold binding to the back of the quilt and stitch it in place by hand to finish.

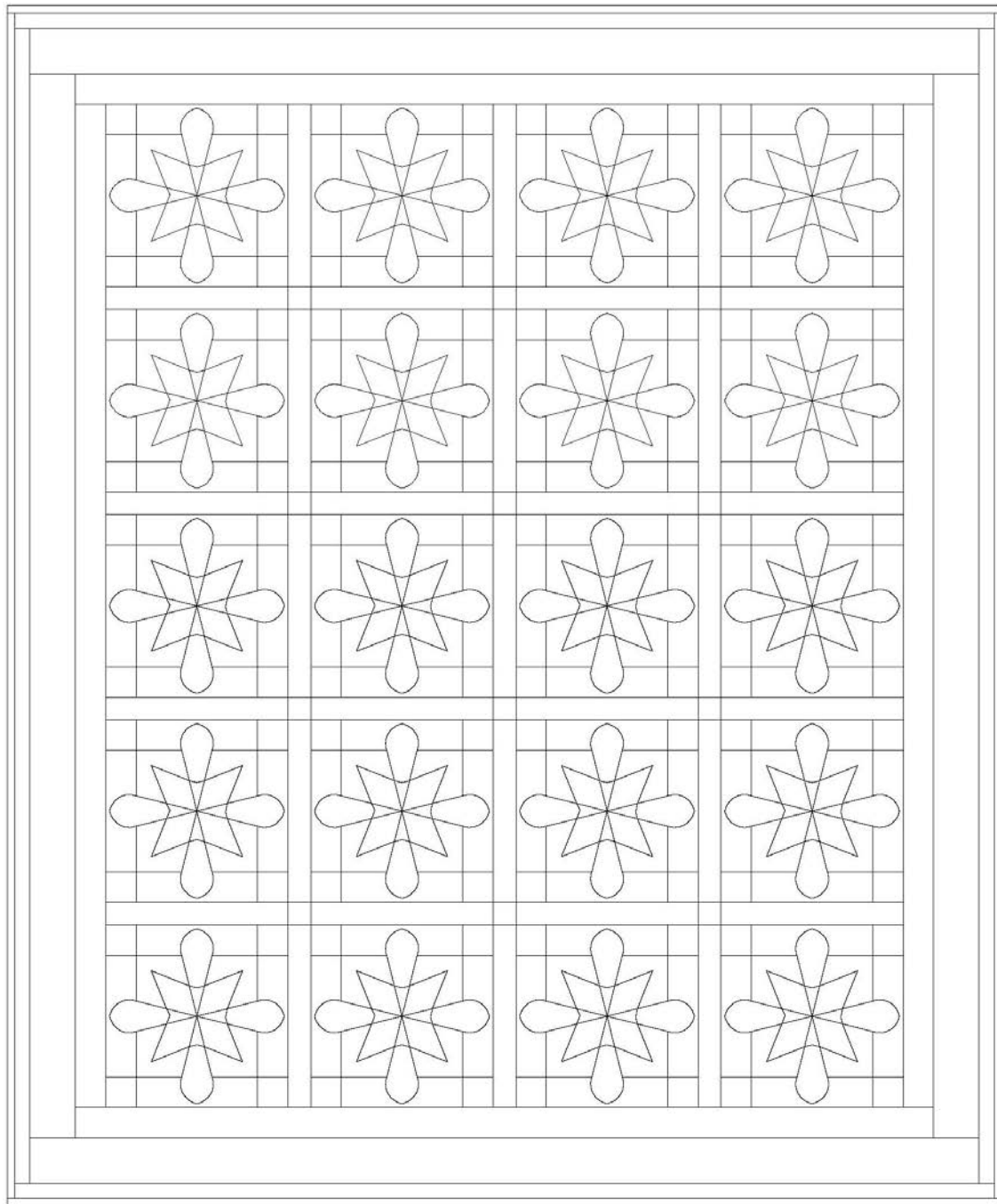


©2021 Blank Quilting Corporation

Every effort has been made to ensure that all projects are error free. All the information is presented in good faith; however, no warranty can be given nor results guaranteed as we have no control over the execution of instructions. Therefore, we assume no responsibility for the use of this information or damages that may occur as a result. When errors are brought to our attention, we make every effort to correct and post a revision as soon as possible. Please make sure to check www.blankquilting.net for pattern updates prior to starting the project. We also recommend that you test the project prior to cutting for kits. Finally, all free projects are intended to remain free to you and are not for resale.

Pansy Prose - Quilt 2

Page 4



Quilt Diagram

