

Party Line

A Free Project Sheet
NOT FOR RESALE

Quilt 1



Quilt Design by Heidi Pridemore

Skill Level: Advanced Beginner

facebook



Finished Quilt Size: 47" x 67"
49 West 37th Street, 14th floor, New York, NY 10018
Toll Free: 800-294-9495
fax: 212-679-4578
www.blankquilting.net
Please check our website for pattern updates before starting this project.

PARTY LINE Quilt 1

Fabrics in the Party Line Collection



Party Balloons
Blue – 1801-77



Presents
Blue – 1802-77



Birthday Candles
White – 1803-01



Birthday Candles
Blue – 1803-77



Party Stripe
Blue – 1804-77



Party Hats
Blue – 1805-77



Cupcakes
White – 1806-01



Birthday Cakes
Turquoise – 1807-75



Happy Birthday Words
White – 1808-01



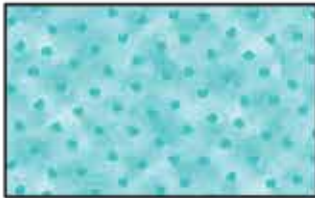
Tonal Stars
Blue – 1809-77



Tonal Stars
Red – 1809-88



Tonal Hearts
Purple – 1810-55



Tonal Hearts
Turquoise – 1810-75



Happy Birthday Panel - 24 in.
Turquoise – 1811P-75

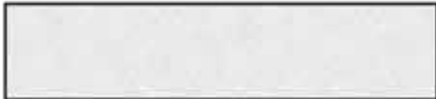
Select Fabrics from the Starlet & Jot Dot Collections



Starlet
Lilac
6383-Lilac



Starlet
Lime
6383-Lime



Starlet
White
6383-White



Starlet
Yellow
6383-Yellow



Jot Dot
Purple
9570-55



Jot Dot
Dark Blue
9570-77

Materials

1 panel	Happy Birthday Panel - 24 in. - Turquoise (A)	1811P-75
5/8 yard	Starlet - Lilac (B)	6383-Lilac
1 yard	Jot Dot - Dark Blue (C)	9570-77
1/8 yard	Birthday Candles - White (D)	1803-01
1/4 yard	Tonal Hearts - Turquoise (E)	1810-75
1/8 yard	Presents - Blue (F)	1802-77
1/4 yard	Starlet - Yellow (G)	6383-Yellow
1/8 yard	Party Balloons - Blue (H)	1801-77
5/8 yard	Tonal Stars - Red (I)	1809-88*
1/8 yard	Cupcakes - White (J)	1806-01
1/4 yard	Starlet - Lime (K)	6383-Lime
2 1/8 yards	Party Stripe - Blue (L)	1804-77
1/4 yard	Tonal Hearts - Purple (M)	1810-55
1/8 yard	Happy Birthday Words - White (N)	1808-01
4 1/4 yards	Birthday Cakes - Turquoise (Backing)	1807-75

*Includes binding

Batting: 55" x 75"

(Recommended: Air Lite® Colour Me 100% Cotton)

Cutting Instructions

Please note: All strips are cut across the width of fabric (WOF) from selvage to selvage unless otherwise noted.

From the Happy Birthday Panel - 24 in. - Turquoise (A):

- Fussy cut (1) 21 1/2" x 41 1/2" rectangle, centered on the panel.

From the Starlet - Lilac (B), cut:

- (2) 2" x 41 1/2" WOF strips.
- (2) 2" x 24 1/2" WOF strips.
- (3) 1 1/2" x WOF strips. Sew the strips together end to end with diagonal seams and cut (2) 1 1/2" x 55 1/2" strips.
- (2) 1 1/2" x 37 1/2" WOF strips.

From the Jot Dot - Dark Blue (C), cut:

- (3) 6 1/2" x WOF strips. Sew the strips together end to end with diagonal seams and cut (2) 6 1/2" x 43 1/2" strips.
- (2) 6 1/2" x 35 1/2" WOF strips.

From the Birthday Candles - White (D), cut:

- See instructions to cut (2) Cupcake Bottoms.

From the Tonal Hearts - Turquoise (E), cut:

- See instructions to cut (2) Cupcake Tops.
- See instructions to cut (6) Confetti.

From the Presents - Blue (F), cut:

- See instructions to cut (2) Cupcake Bottoms.

From the Starlet - Yellow (G), cut:

- See instructions to cut (2) Cupcake Tops.
- See instructions to cut (6) Confetti.

From the Party Balloons - Blue (H), cut:

- See instructions to cut (2) Cupcake Bottoms.

From the Tonal Stars - Red (I), cut:

- (6) 2 1/2" x WOF strips for the binding.
- See instructions to cut (2) Cupcake Tops.
- See instructions to cut (6) Confetti.

From the Cupcakes - White (J), cut:

- See instructions to cut (1) Cupcake Bottom.

From the Starlet - Lime (K), cut:

- See instructions to cut (1) Cupcake Top.
- See instructions to cut (6) Confetti.

From the Party Stripe - Blue (L), cut:

- (2) 5 1/2" x 71" Length of Fabric (LOF) strips.
- (2) 5 1/2" x 51" LOF strips.

From the Tonal Hearts - Purple (M), cut:

- See instructions to cut (1) Cupcake Top.

From the Happy Birthday Words - White (N), cut:

- See instructions to cut (1) Cupcake Bottom.

From the Birthday Cakes - Turquoise (Backing), cut:

- (2) 75" x WOF strips for the backing. Sew the strips together and trim to make the 55" x 75" back.

Block Assembly

Note: The arrows figures represent the fabric print direction. Pay attention to the fabric and unit orientations when assembling the various components. Use a 1/4" seam allowance with right sides together (RST) unless otherwise noted.

1. Sew (1) 2" x 41 1/2" Fabric B strip to each side of the 21 1/2" x 41 1/2" Fabric A panel. Sew (1) 2" x 24 1/2" Fabric B strip to the top and to the bottom of the Fabric A panel to make the Unit 1 rectangle (Fig. 1). **Trim the unit to measure 23 1/2" x 43 1/2".**

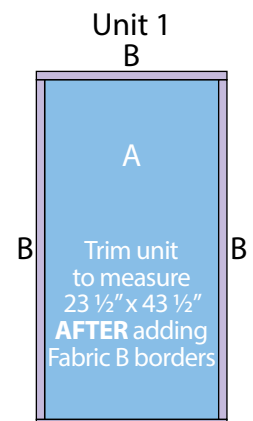


Fig. 1 B

2. Sew (1) $6\frac{1}{2}$ " x $43\frac{1}{2}$ " Fabric C strip to each side of the Unit 1 rectangle. Sew (1) $6\frac{1}{2}$ " x $35\frac{1}{2}$ " Fabric C strip to the top and to the bottom of the Unit 1 rectangle to make the Unit 2 rectangle (Fig. 2).

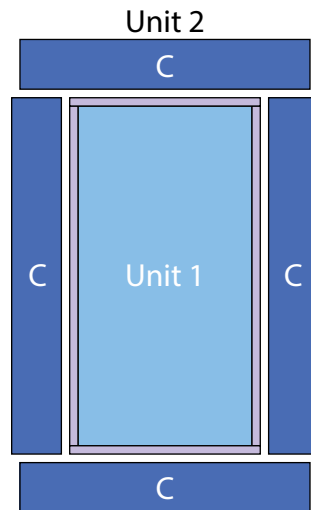


Fig. 2

3. Following the manufacturer's instructions, trace the listed number of each template onto the paper side of the fusible web. Roughly cut out each template about $\frac{1}{8}$ " outside the drawn lines.

4. Press each template onto the wrong side of the fabrics as listed on the templates. Cut out each template on the drawn lines.

5. Refer to Figure 3 to arrange and press the assorted cupcake tops, cupcake bottoms and confetti pieces onto the Fabric C borders of the Unit 2 rectangle.

6. Finish the raw edges of each shape with a decorative stitch such as a buttonhole or satin stitch to make the Center Block.



Fig. 3

Quilt Top Assembly

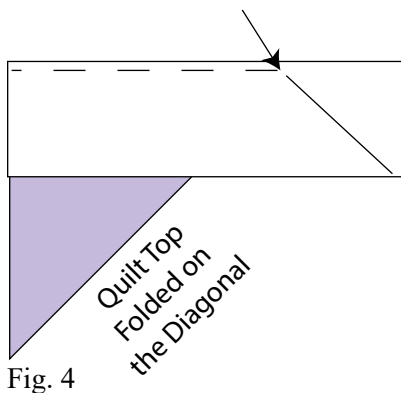
(Follow the Quilt Layout while assembling the quilt top.)

7. Sew (1) 1 1/2" x 55 1/2" Fabric B strip to each side of the Center Block. Sew (1) 1 1/2" x 37 1/2" Fabric B strip to the top and to the bottom of the Center Block.

8. Center (1) 5 1/2" x 71" Fabric L strip on (1) side of the Center Block and pin in place. Start sewing the strip a 1/4" from the top edge of the block and stop a 1/4" from the bottom edge. **DO NOT TRIM THE EXCESS.** Repeat with the opposite side.

9. Repeat Step 8 to sew (1) 5 1/2" x 51" Fabric L strip to the top and to the bottom of the Center Block, making sure to stop and start 1/4" away from each end of the block. To miter each corner, fold the Center Block on a diagonal, wrong side together. This should line up the strips from adjacent sides (Fig. 4).

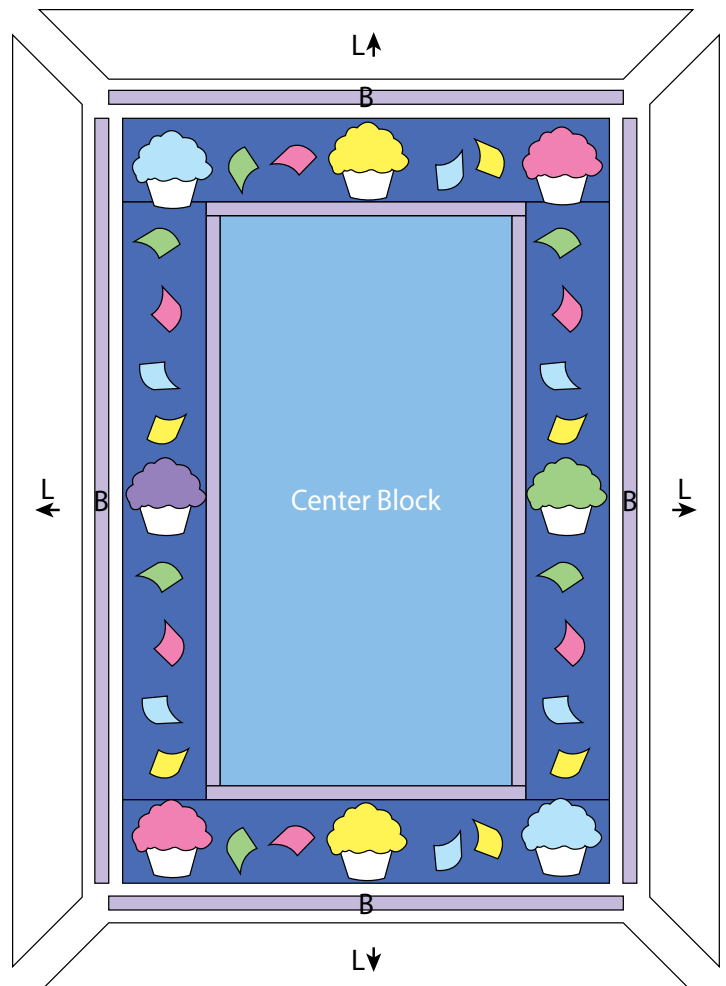
10. Starting at the sewn seam (represented by the arrow in Figure 4), draw a 45-degree line to the edge of the fabric. Sew on the drawn line. Trim the excess fabric leaving a 1/4" seam. Repeat this step with the remaining corners to make the quilt top.



11. Layer and quilt as desired.

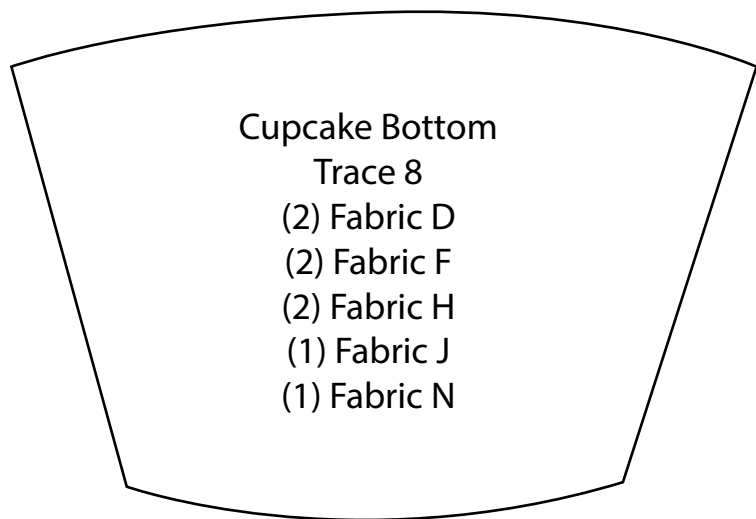
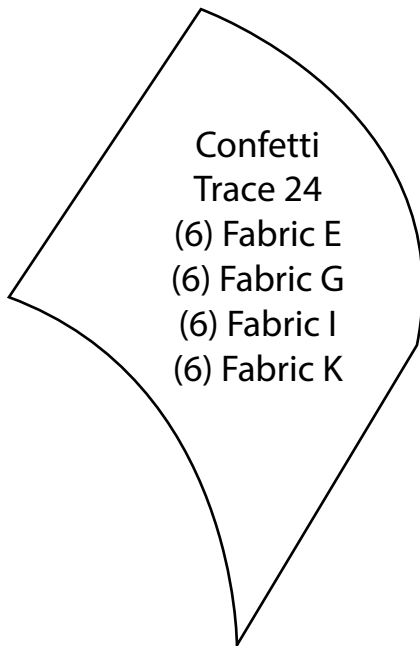
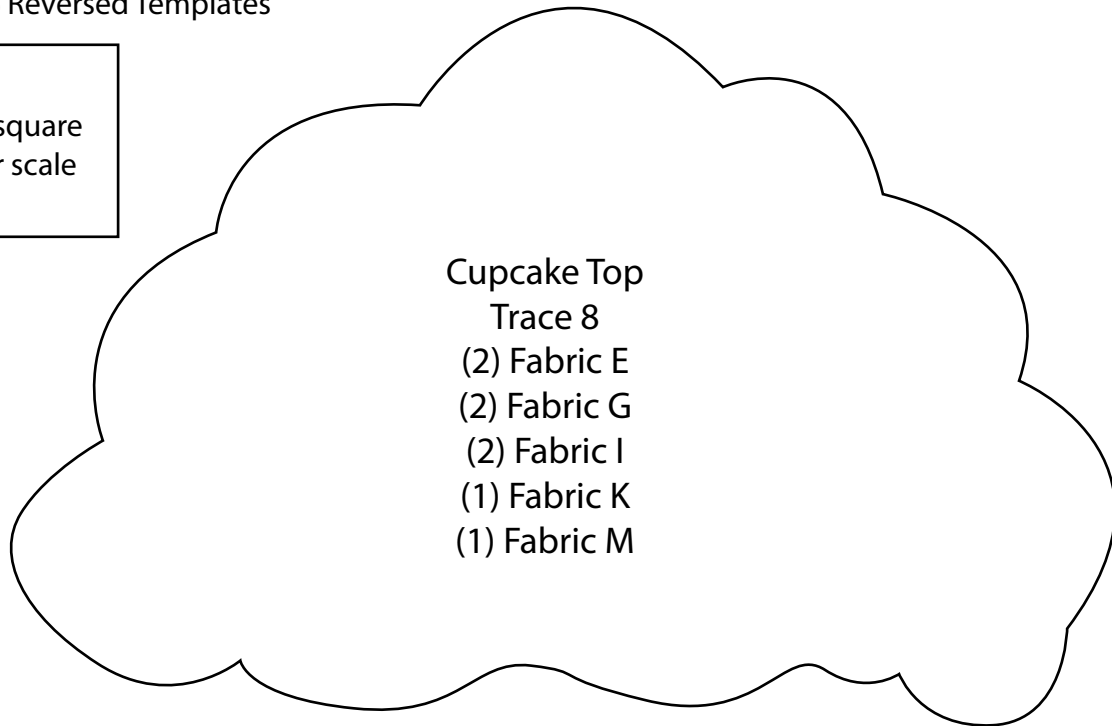
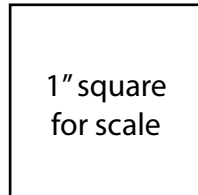
12. Sew the (6) 2 1/2" x WOF Fabric I strips together, end to end with 45-degree seams, to make the binding. Fold this long strip in half lengthwise with wrong sides together and press.

13. Bind as desired.



Quilt Layout

100% Reversed Templates



*Every effort has been made to ensure that all projects are error free. All the information is presented in good faith, however no warranty can be given nor results guaranteed as we have no control over the execution of instructions. Therefore, we assume no responsibility for the use of this information or damages that may occur as a result. When errors are brought to our attention, we make every effort to correct and post a revision as soon as possible. Please make sure to check www.blankquilting.net for pattern updates prior to starting the project. We also recommend that you test the project prior to cutting for kits. Finally, all free projects are intended to remain free to you and are **not for resale**.*