



Peacock Pavillion

Quilt 1
by Denise Russell



Quilt size: 55" x 75"

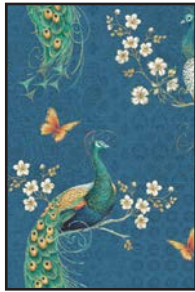
Skill Level: Beginner

Blank Quilting Corporation
49 West 37th Street ♦ New York, NY 10018
Tel: 800-294-9495 ♦ Fax: 212-679-4578
www.blankquilting.net

facebook

Free Project
NOT FOR RESALE

Peacock Pavillion - Fabrics in the Collection



9853-77 Spaced Peacock
Blue



9855-41 Butterflies
Ivory



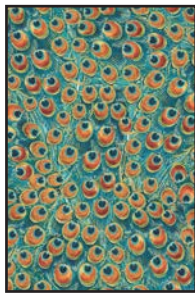
9852P-41 Peacock Panel-Ivory



9854-41 Medallion with Flower
Ivory



9854-88 Medallion with Flower
Red



9856-75 Feathers
Blue



9857-77 Paisley
Blue



9857-88 Paisley
Red



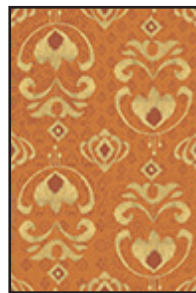
9858-70 Small Medallion
Turquoise



9858-88 Small Medallion
Red



9859-41 Floral
Ivory



9860-33 Geometric
Orange



9860-72 Geometric
Med. Blue



9861-77 Stripe
Blue

Selected fabric from Urban
Legend by Tana Mueller



7101-33 Terra

Peacock Pavillion - Quilt 1

Page 1

Materials

Yardages and cutting instructions are based on 42" of usable fabric width.

1 9852P-41 Peacock Panel-Ivory
5/8 yard 9861-77 Stripe-Blue
5/8 yard 9854-41 Medallion with Flower-Ivory
1 yard 9859-41 Floral-Ivory
1-1/8 yards 9854-88 Medallion with Flower-Red
1-1/8 yards Urban Legend 7071-33 Terra (includes binding)
4-7/8 yards 9853-77 Spaced Peacock-Blue for backing
63" x 83" piece of batting

Cut Fabrics

Note: All strips are cut across the width of the fabric (WOF) from selvage to selvage unless otherwise noted. If cut across the length of the fabric (LOF), the LOF notation will be indicated.

From 9852P-41 Peacock Panel-Ivory:

*Trim panel to 23" x 43".

From 9861-77 Stripe-Blue:

*Cut nine 2" x WOF strips: four for border 2, five for border 4.

From 9854-41 Medallion with Flower-Ivory:

*Cut four 4-1/2" x WOF strips for border 3.

From 9859-41 Floral-Ivory:

*Cut one 2-7/8" x WOF strip. Sub-cut four 2-7/8" squares; cut once diagonally. (A)

*Cut thirteen 2" x WOF strips: six for border 6 and seven for border 8.

From 9854-88 Medallion with Flower-Red:

*Cut one 4-7/8" x WOF strip. Sub-cut two 4-7/8" squares; cut once diagonally. (B)

*Cut six 4-1/2" x WOF strips for border 7.

From Urban Legend 7071-33 Terra:

*Cut one 2-1/2" x WOF strip. Sub-cut four 2-1/2" squares.

*Cut nine 1-1/2" x WOF strips: four for border 1 and five for border 5.

*Cut seven 2-1/2" x WOF strips for binding.

Assemble Blocks

Note: Measurements include 1/4" seam allowances. Sew with right sides together unless otherwise stated. If no direction is specified, press seams toward darker fabric.

1. Sew two 9859-41 Floral-Ivory triangles A to adjacent sides of one 2-1/2" Urban Legend 7071-33 Terra square (*figure 1*). Press seams away from the square and trim ears. Repeat with remaining Floral-Ivory triangles A and Terra squares.



Figure 1 – Make 4.

2. Sew one 9854-88 Medallion with Flower-Red triangle B to each step 1 unit (*figure 2*) to make four 4-1/2" corner blocks. Press seams to large triangle.



Figure 2 – Make 4.

Assemble Quilt Top

3. For border 1, sew together the four 1-1/2" Urban Legend 7071-33 Terra strips end to end using diagonal seams. Stitch a border strip to each side of the panel and trim the extra length. Press seams toward the border. In the same manner, stitch one border to the top and another to the bottom.

4. For border 2, sew four 2" 9861-77 Stripe-Blue strips together end to end using diagonal seams. Measure the vertical length of the quilt top through the center and cut two border strips that length. Sew strips to the sides of the quilt top. Measure the width of the quilt top through its center. Cut two border strips that length and sew one to the top and one to the bottom. Press seams toward borders.

5. Repeat step 4 with the four 4-1/2" 9854-41 Medallion with Flower-Ivory strips to make and to add border 3.

6. Repeat step 4 with the five 2" 9861-77 Stripe-Blue strips to make and add border 4.

7. Repeat step 4 with the five 1-1/2" Urban Legend 7071-33 Terra strips to make and add border 5.

8. Repeat step 4 with the six 2" 9859-41 Floral-Ivory strips to make and add border 6.

9. For border 7, sew six 4-1/2" 9854-88 Medallion with Flower-Red strips together end to end using diagonal seams. Measure the width of the quilt top through the center. Cut two border strips that length, sew a step 2 block to each end of the strips to make the top and the bottom border strips, press seams away from squares and set them aside. Measure the vertical length of the quilt top through the center and cut two border strips that length. Sew one strip to each side of the quilt top. Press seams toward borders. Finally, sew the top and the bottom strips to the quilt center. Press the seams toward the borders.

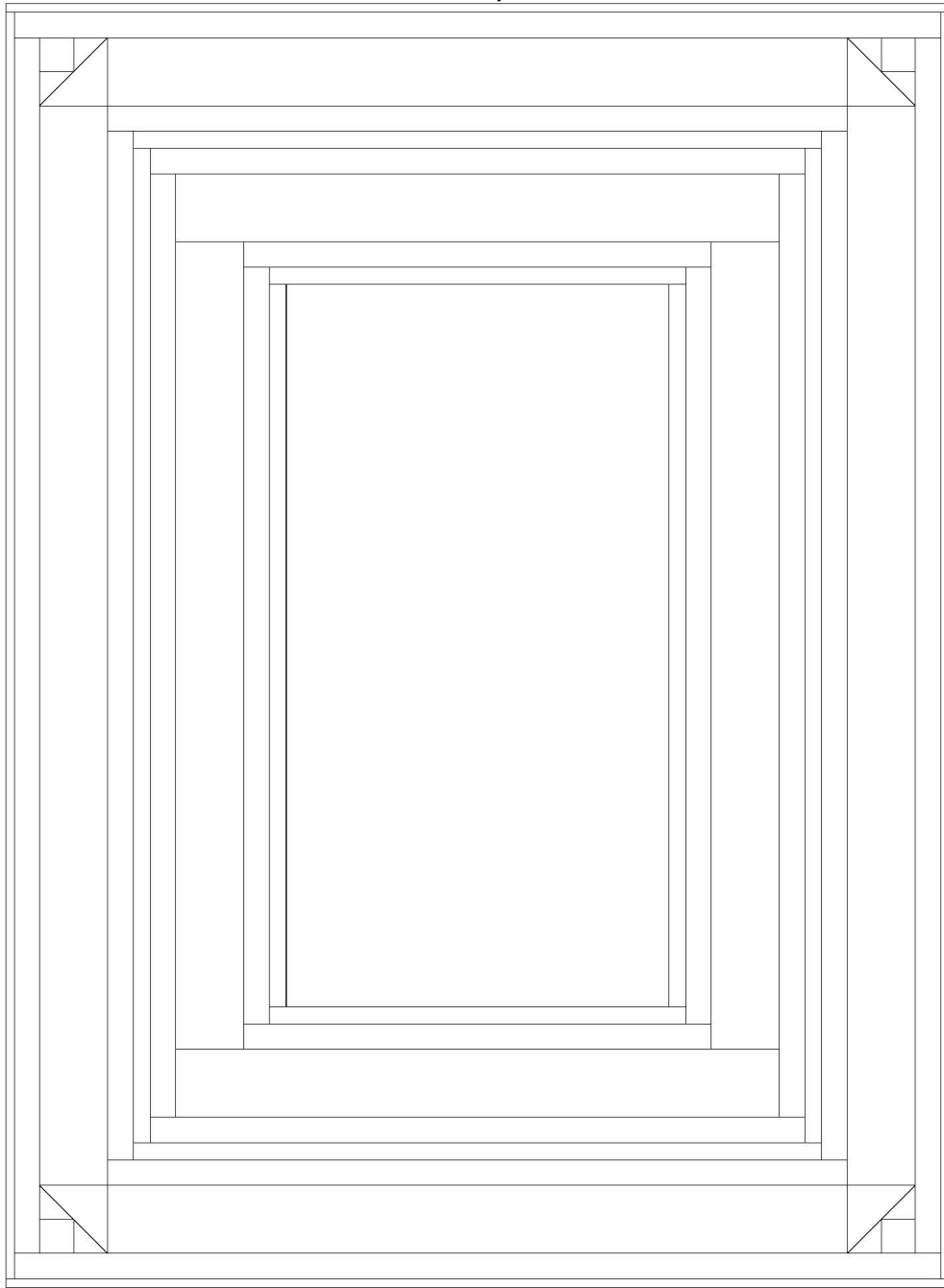
10. Repeat step 4 with the seven 2" 9859-41 Floral-Ivory strips to make and add border 8.

Finishing

11. Create a quilt sandwich with the batting between the quilt top and the backing. Pin or baste layers together, mark quilting design, and quilt by hand or machine. When quilting is complete, remove pins or basting, and trim batting and backing even with raw edges of the quilt top.

12. Join the seven 2-1/2" Urban Legend 7071-33 Terra binding strips together end to end using a diagonal seam to make one long strip. Press in half lengthwise. Sew binding to the edges of the quilt, mitering corners, and overlapping ends. Fold binding to the back of the quilt and stitch it in place by hand to finish.

Peacock Pavillion - Quilt 1



Quilt Diagram