



Table Topper

Punchbowl

by Two if by Sea



Quilt design by Denise Russell.

Quilt size: 45" x 45"

Skill Level: Advanced Beginner

Blank Quilting Corporation
49 West 37th Street ♦ New York, NY 10018
Tel: 800-294-9495 ♦ Fax: 212-679-4578
www.blankquilting.net

facebook

Free Project
NOT FOR RESALE

Punchbowl - Fabrics in the Collection



2173-01 Fruits with Stars & Raindrops - White



2174-33 Fruits with Drops - Orange



2174-76 Fruits with Drops - Turquoise



2175-33 Lemons Orange



2175-79 Lemons Teal



2176-22 Mini Fruits Pink



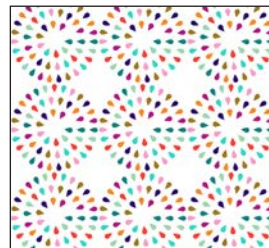
2176-33 Mini Fruits Orange



2177-75 Raindrops Dk. Blue



2177-79 Raindrops Teal



2178-01 Circle Raindrops - White



2179-01 Leaves White



2180-25 Flowers with Stems - Fuchsia



2181-50 Circle Stars with Stems - Periwinkle

Selected fabrics from the Jot Dot I and II Collections



9570-09 Marshmallow



9570-76 Teal

Punchbowl - Table Topper

Materials

Yardages and cutting instructions are based on 42" of usable fabric width

1/4 yard 2177-79 Raindrops - Teal
1/3 yard 2174-33 Fruits with Drops - Orange
1/3 yard 2175-33 Lemons - Orange
1/3 yard 2176-22 Mini Fruits - Pink
1/3 yard 2180-25 Flowers with Stems - Fuchsia
1/3 yard 2181-50 Circle Stars with Stems - Periwinkle
1/3 yard 2177-75 Raindrops - Dk. Blue
1/2 yard 9570-76 Jot Dot - Teal
2/3 yard 2174-76 Fruits with Drops - Turquoise
3/4 yard 9570-09 Jot Dot - Marshmallow
3/4 yard 2173-01 Fruits with Stars & Raindrops - White
3-1/8 yards 2174-33 Fruits with Drops - Orange for backing
53" x 53" piece of Air Lite® Colour Me 100% Cotton batting

Cut Fabrics

Note: All strips are cut across the width of the fabric (WOF) from selvage to selvage unless otherwise indicated.

From 2177-79 Raindrops – Teal:

*Cut four 1-1/2" x WOF strips for border 1.

From each:

2174-33 Fruits with Drops – Orange:

2175-33 Lemons - Orange

2176-22 Mini Fruits – Pink

2180-25 Flowers with Stems – Fuchsia

2181-50 Circle Stars with Stems - Periwinkle

*Cut two 2" x WOF strips. Sub-cut twenty-four 2" squares.

*Cut one 3-1/2" x WOF strip. Sub-cut four 3-1/2" squares.

From 2177-75 Raindrops - Dk. Blue:

*Cut two 2" x WOF strips. Sub-cut forty 2" squares.

*Cut one 3-1/2" x WOF strip. Sub-cut five 3-1/2" squares.

From 9570-76 Jot Dot – Teal:

*Cut five 2-1/2" x WOF strips for binding.

From 2174-76 Fruits with Drops – Turquoise:

*Cut one 18-1/4" x WOF strip. Sub-cut:

- One 18-1/4" square; cut twice diagonally. (A)
- Two 9-3/8" squares; cut once diagonally. (B)

From 9570-09 Jot Dot – Marshmallow:

*Cut three 2" x WOF strips. Sub-cut sixty 2" squares.

*Cut five 3-1/2" x WOF strips. Sub-cut sixty 2" x 3-1/2" strips and twenty 3-1/2" squares.

From 2173-01 Fruits with Stars & Raindrops – White:

*Cut five 4-1/2" x WOF strips for border 2.

Assemble Blocks

Note: Measurements include 1/4" seam allowances. Sew with right sides together unless otherwise stated. If no direction is specified, press the seam toward the darker fabric.

1. Draw a diagonal line on the wrong side of forty 2" 9570-09 Jot Dot – Marshmallow squares. With right sides together, place one marked Marshmallow square on a corner of one 3-1/2" 2177-75 Raindrops - Dk. Blue square and stitch on the drawn line. Repeat with the opposite corner of the same square. Trim seam allowances to 1/4" and press open. Repeat with the other corners (*figure 1*). Make five 3-1/2" units.



Figure 1 – Make (5) 3-1/2" units.

2. Sew one marked 2" 9570-09 Jot Dot – Marshmallow square to a corner of one 3-1/2" 2174-33 Fruits with Drops – Orange. Trim seam allowance to 1/4" and press open (*figure 2*). Repeat to make four 3-1/2" units.



Figure 2 – Make (4) 3-1/2" units.

3. Repeat Step 1 with four 3-1/2" 9570-09 Jot Dot – Marshmallow squares, the 2" 2174-33 Fruits with Drops – Orange squares, and two 2" 2177-75

Punchbowl - Table Topper

Raindrops - Dk. Blue squares, sewing the same color squares to adjacent corners of the Marshmallow squares (*figure 3*). Make four 3-1/2" units.



Figure 3 - Make (4) 3-1/2" units.

4. Draw a diagonal line on the wrong side of the remaining 2" 2174-33 Fruits with Drops - Orange squares. With right sides together, layer a marked Orange square on the left short end of a 2" x 3-1/2" 9570-09 Jot Dot - Marshmallow strip and stitch on the drawn line. Trim 1/4" away from the seam line and press open. Similarly, stitch another Orange square to the opposite end of the same strip (*figure 4*). Repeat to make a total of eight 2" x 3-1/2" flying-geese units.



Figure 4 - Make (8) 2" x 3-1/2" units.

5. Using the remaining 2" 9570-09 Jot Dot - Marshmallow squares and 2" x 3-1/2" 9570-09 Jot Dot - Marshmallow strips, assemble the block with the units from Steps 1, 2, 3, and 4 as shown below (*figure 5*) to make one 12-1/2" block. Press the seams in one direction.

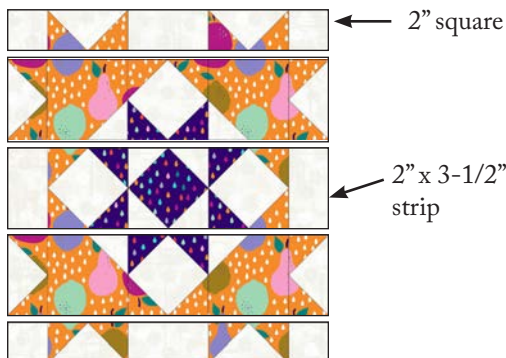


Figure 5 - Make (1) 12-1/2" block.

6. Repeat Steps 2-5 with the 2" and 3-1/2" squares of 2175-33 Lemons - Orange, 2176-22 Mini Fruits - Pink, 2180-25 Flowers with Stems - Fuchsia, and the 2181-50 Circle Stars with Stems - Periwinkle, as well as the remaining Step 1 units and the 2" squares and

2" x 3-1/2" strips of 9570-09 Jot Dot - Marshmallow to make four assorted 12-1/2" squares.

Assemble Quilt Top

7. Following the quilt photo for block placement, lay out three diagonal rows of alternating blocks. Add the 2174-76 Fruits with Drops - Turquoise setting triangles A to the beginning and the end of rows 1 and 3. Sew the setting triangles and blocks together in each row, then matching adjacent seams sew the rows together in order. Press seams in alternate directions for adjacent rows. Sew one 2174-76 Fruits with Drops - Turquoise corner triangle B to each corner.

8. For border 1, join the four 1-1/2" 2177-79 Raindrops - Teal strips together end to end using diagonal seams. Measure the vertical length of the quilt top through the center and cut two border strips that length. Sew one strip to each side of the quilt top and press the seams toward the border strips. Measure the width of the quilt top through the center. Cut two border strips that length and sew one to the top and one to the bottom. Press the seams toward the borders.

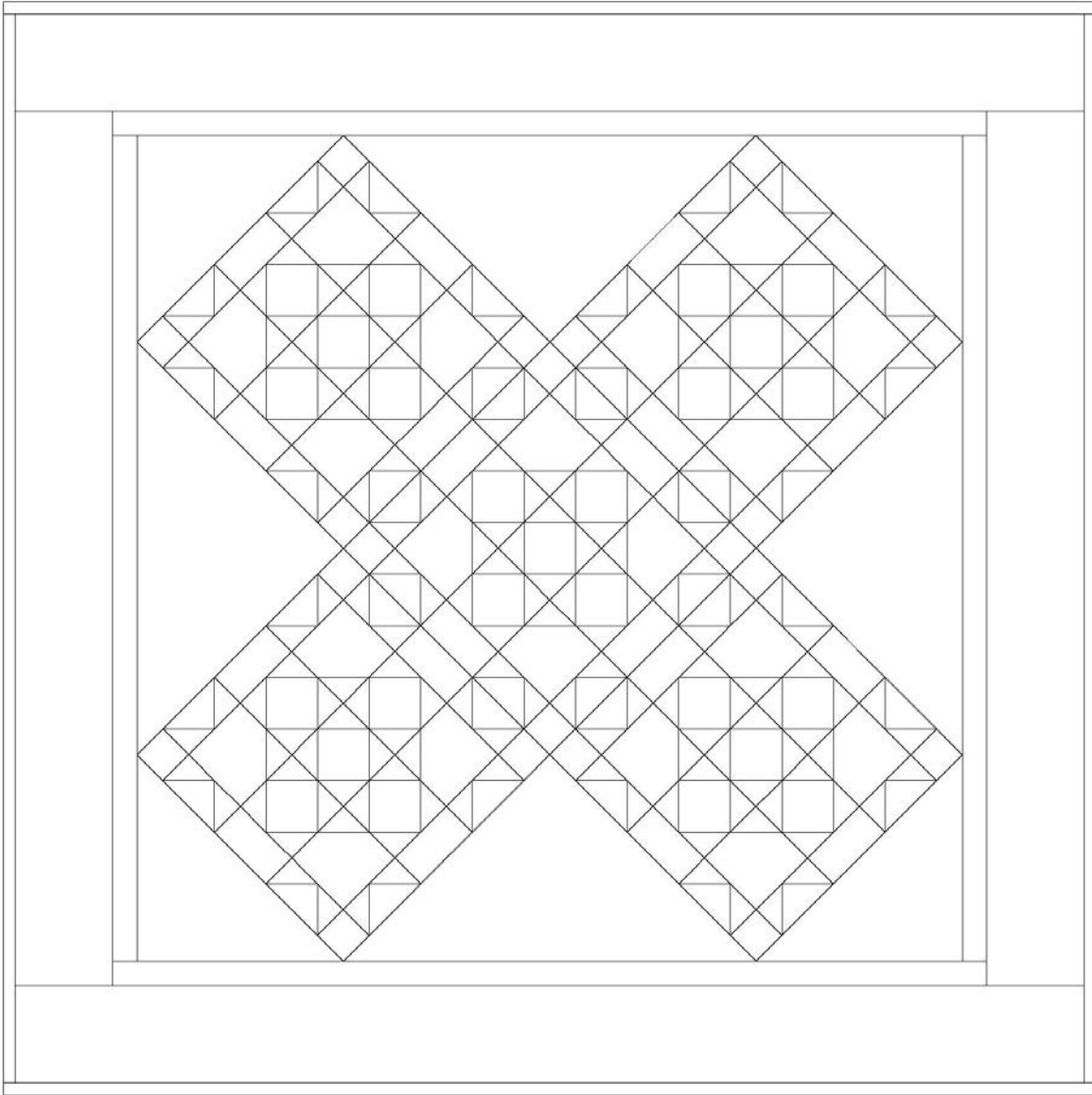
9. Repeat Step 8 with the five 4-1/2" 2173-01 Fruits with Stars & Raindrops - White strips to make and add border 2.

Finishing

10. Create a quilt sandwich with the batting between the quilt top and the backing. Pin or baste layers together, mark quilting design, and quilt by hand or machine. When quilting is complete, remove pins or basting, and trim batting and backing even with raw edges of the quilt top.

11. Join the five 2-1/2" 9570-76 Jot Dot - Teal binding strips together end to end using a diagonal seam to make one long strip. Fold in half lengthwise and press. Sew binding to the edges of the quilt, mitering corners, and overlapping ends. Fold binding to the back of the quilt and stitch it in place by hand to finish.

Punchbowl - Table Topper



Quilt Diagram

©2021 Blank Quilting Corporation

Every effort has been made to ensure that all projects are error free. All the information is presented in good faith; however, no warranty can be given nor results guaranteed as we have no control over the execution of instructions. Therefore, we assume no responsibility for the use of this information or damages that may occur as a result. When errors are brought to our attention, we make every effort to correct and post a revision as soon as possible. Please make sure to check www.blankquilting.net for pattern updates prior to starting the project. We also recommend that you test the project prior to cutting for kits. Finally, all free projects are intended to remain free to you and are not for resale.