

Purranoia

A Free Project Sheet
NOT FOR RESALE

By Color Pop Studio

Quilt 1

Quilt Design by Heidi Pridemore



Skill Level: Advanced Beginner



facebook

Finished Quilt Size: 54" x 74"
49 West 37th Street, 14th floor, New York, NY 10018
Toll Free: 800-294-9495
fax: 212-679-4578
www.blankquilting.net

Please check our website for pattern updates before starting this project.

PURRANOIA

Quilt 1

Finished Quilt Size: 54" x 74"

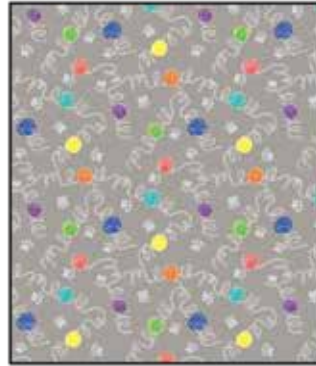
Fabrics in the Purranoia Collection



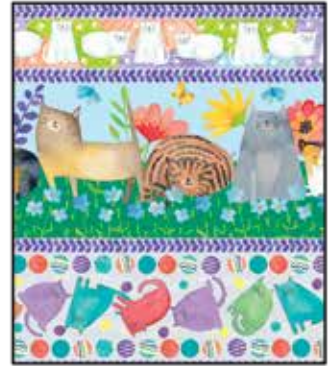
Cats in the Garden - Green
1914-66



Cat Collage - Orange
1915-33



Meow Yarn - Light Gray
1916-90



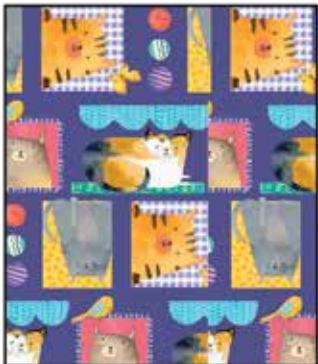
Cat Stripe - Light Blue
1917-11



Tossed Cats - White
1918-01



Cat Paws - Dark Gray
1919-95



Cat Patch - Purple
1920-55



Cat Panel - 24 inches -Light Blue
1921P-11

Select Fabrics from the Jot Dot Collection



Medium Yellow
9570-42



Purple
9570-55



Fog
9570-93



Black
9570-99

Materials

1 panel	Cat Panel - Light Blue (A)	1921P-11
½ yard	Jot Dot - Purple (B)	9570-55
1 ¼ yards	Jot Dot - Fog (C)	9570-93
¼ yard	Tossed Cats - White (D)	1918-01
¼ yard	Jot Dot - Medium Yellow (E)	9579-42
¼ yard	Meow Yarn - Light Gray (F)	1916-90
¼ yard	Cat Patch - Purple (G)	1920-55
⅔ yard	Cat Paws - Dark Gray (H)	1919-95*
¼ yard	Cats in the Garden - Green (I)	1914-66
¼ yard	Cat Collage - Orange (J)	1915-33
2 ¼ yards	Cat Stripe - Light Blue (K)	1917-11
3 ½ yards	Tossed Cats - White (Backing)	1918-01

*Includes binding

Batting: 62" x 82"

(Recommended: Air Lite® Colour Me 100% Cotton)

Cutting Instructions

Please note: All strips are cut across the width of fabric (WOF) from selvage to selvage edge unless otherwise noted.

From the Cat Panel - Light Blue (A):

- Fussy cut (1) 21 ½" x 41 ½" rectangle, centered on the panel.

From the Jot Dot - Purple (B), cut:

- (2) 2" x 41 ½" WOF strips.
- (2) 2" x 24 ½" WOF strips.
- (3) 1 ½" x WOF strips. Sew the strips together end to end with diagonal seams and cut (2) 1 ½" x 59 ½" strips.
- (2) 1 ½" x 41 ½" WOF strips.

From the Jot Dot - Fog (C), cut:

- (3) 8 ½" x WOF strips. Sew the strips together end to end with diagonal seams and cut (2) 8 ½" x 43 ½" strips.
- (2) 8 ½" x 39 ½" WOF strips.

From the Tossed Cats - White (D), cut:

- (4) Template 3 Large Circles.

From the Jot Dot - Medium Yellow (E), cut:

- (4) Template 1 Small Circles.

From the Meow Yarn - Light Gray (F), cut:

- (4) Template 2 Medium Circles.

From the Cat Patch - Purple (G), cut:

- (4) Template 3 Large Circles.

From the Cat Paws - Dark Gray (H), cut:

- (4) Template 1 Small Circles.
- (7) 2 ½" x WOF strips for the binding.

From the Cats in the Garden - Green (I)

- (4) Template 2 Medium Circles.

From the Cat Collage - Orange (J)

- (4) Template 3 Large Circles.

From the Cat Stripe - Light Blue (K)

- (2) 7" x 78" Length of Fabric (LOF) strips.
- (2) 7" x 58" LOF strips.

From the Tossed Cats - White (Backing), cut:

- (2) 62" x WOF strips for the backing. Sew the strips together and trim to make the 62" x 82" back.

Block Assembly

Note: The arrows figures represent the fabric print direction. Pay attention to the fabric and unit orientations when assembling the various components. Use a ¼" seam allowance with right sides together (RST) unless otherwise noted.

1. Sew (1) 2" x 41 ½" Fabric B strip to each side of the 21 ½" x 41 ½" Fabric A panel. Sew (1) 2" x 24 ½" Fabric B strip to the top and to the bottom of the Fabric A panel to make the Center Block (Fig. 1). **Trim the block to measure 23 ½" x 43 ½".**

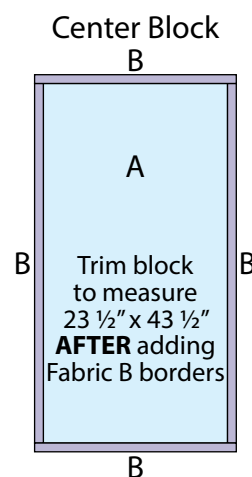


Fig. 1

2. Following the manufacturer's instructions, trace the listed number of each template onto the paper side of the fusible web. Roughly cut out each template about 1/8" outside the drawn lines.

3. Press each template onto the wrong side of the fabrics as listed on the templates. Cut out each template on the drawn lines.

4. Refer to Figure 2 to arrange and press (3) assorted Template 3 circles, (2) Template 2 circles and (2) Template 1 circles onto (1) 8 1/2" x 43 1/2" Fabric C strip.

5. Finish the raw edges of each circle with a decorative stitch such as a buttonhole or satin stitch to make the Left Side Border.

6. Repeat Steps 4-5 and refer to Figures 3 for fabric identification, placement and orientation to make the Right Side Border.

7. Repeat Step 4-5 and refer to Figures 4-5 for fabric identification, placement and orientation while using (2) 8 1/2" x 39 1/2" Fabric C strips, (6) assorted Template 3 circles, (4) assorted Template 2 circles and (4) assorted Template 1 circles to make the Top Border and Bottom Border.

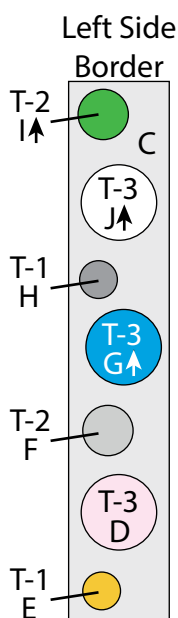


Fig. 2

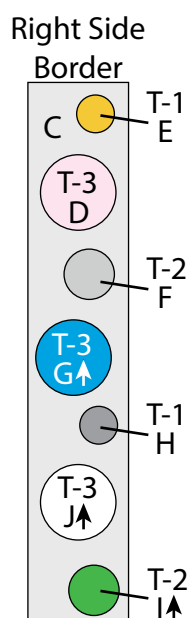


Fig. 3

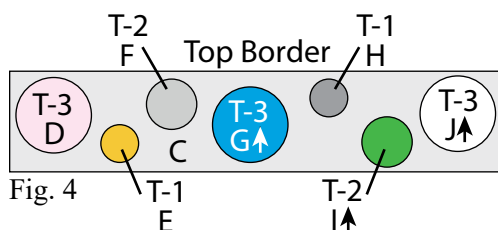


Fig. 4

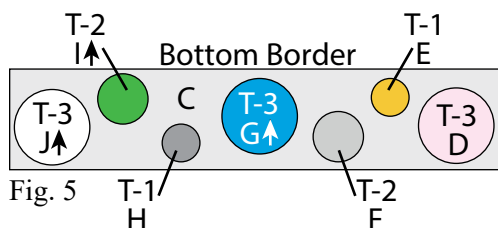


Fig. 5

Quilt Top Assembly

(Follow the Quilt Layout on Page 4 while assembling the quilt top.)

8. Sew the Left Side Border and Right Side Border to the left and to the right sides of the Center Block.

9. Sew the Top Border and Bottom Border to the top and to the bottom of the Center Block.

10. Sew (1) 1 1/2" x 59 1/2" Fabric B strip to each side of the Center Block. Sew (1) 1 1/2" x 41 1/2" Fabric B strip to the top and to the bottom of the Center Block.

11. Center (1) 7" x 78" Fabric K strip on (1) side of the Center Block and pin in place. Start sewing the strip a 1/4" from the top edge of the block and stop a 1/4" from the bottom edge. **DO NOT TRIM THE EXCESS.** Repeat with the opposite side.

12. Repeat Step 11 to sew (1) 7" x 58" Fabric K strip to the top and to the bottom of the Center Block, making sure to stop and start 1/4" away from each end of the block. To miter each corner, fold the Center Block on a diagonal, wrong side together. This should line up the strips from adjacent sides (Fig. 6).

13. Starting at the sewn seam (represented by the arrow in Figure 6), draw a 45-degree line to the edge of the fabric. Sew on the drawn line. Trim the excess fabric leaving a 1/4" seam. Repeat this step with the remaining corners to make the quilt top.

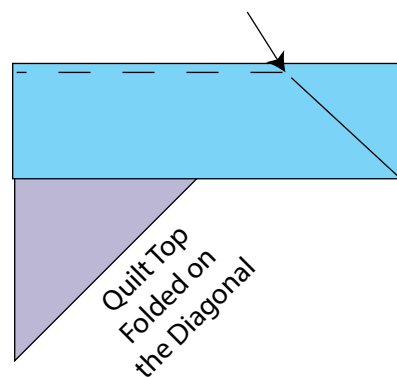


Fig. 6

14. Layer and quilt as desired.

15. Sew the (7) 2 1/2" x WOF Fabric H strips together, end to end with 45-degree seams, to make the binding. Fold this long strip in half lengthwise with wrong sides together and press.

16. Bind as desired.

100% Templates

Medium Circle (4") Template (T-2)

Trace 8
(4) Fabric F
(4) Fabric I

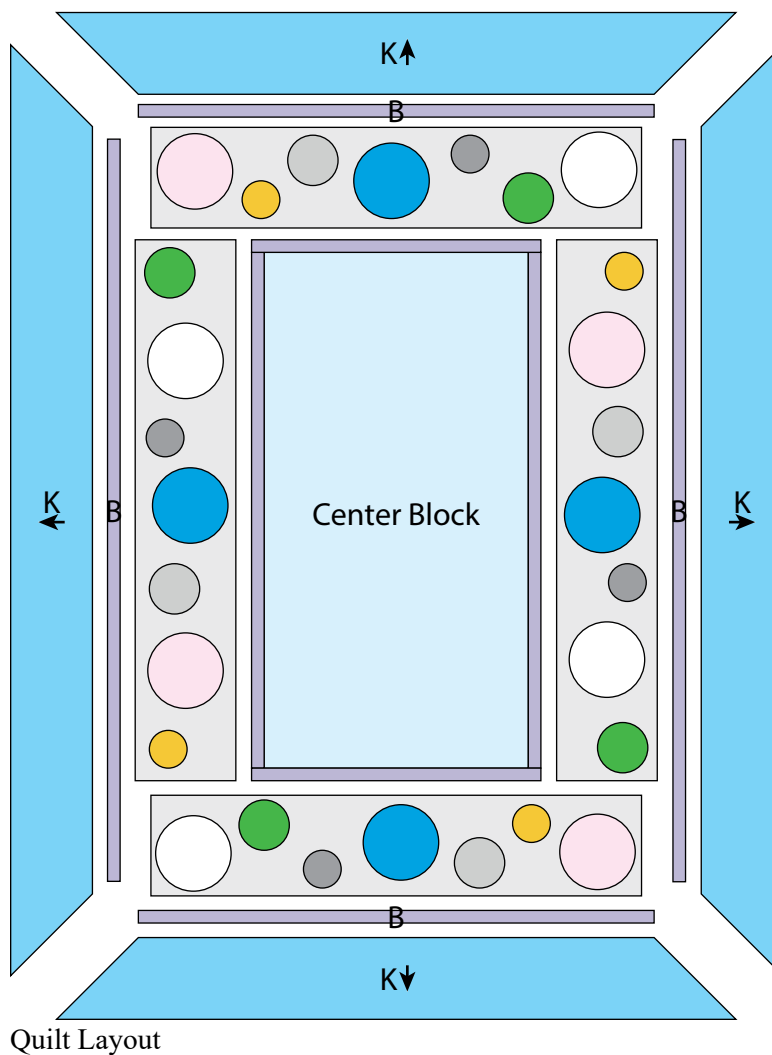
Small Circle (3") Template (T-1)

Trace 8
(4) Fabric E
(4) Fabric H

1" square
for scale

Large Circle (6") Template (T-3)

Trace 12
(4) Fabric D
(4) Fabric G
(4) Fabric J



Every effort has been made to ensure that all projects are error free. All the information is presented in good faith, however no warranty can be given nor results guaranteed as we have no control over the execution of instructions. Therefore, we assume no responsibility for the use of this information or damages that may occur as a result. When errors are brought to our attention, we make every effort to correct and post a revision as soon as possible. Please make sure to check www.blankquilting.net for pattern updates prior to starting the project. We also recommend that you test the project prior to cutting for kits. Finally, all free projects are intended to remain free to you and are **not for resale**.