

Q-2388



Beginner

Star Sprinkle Calendar

26¾ X 26½" (68,5 x 67 cm)

FABRIC REQUIREMENT:

Fabrics from serie „Star Sprinkle”,
44" (112 cm) wide.



Danish Design 

OTHER SUPPLIES:

Batting: Matilda's Own 99M400, 100% cotton, 94" (240 cm) wide 32" (80 cm)

In addition: Matching sewing and quilting thread.

The Basics: Whenever this symbol ➡ appears in the directions, you will find a detailed explanation for "Basic Sewing" in the website www.stofffabrics.com under Inspiration.

CUTTING ➡:

¼" (0,75 cm) seam allowance is included.

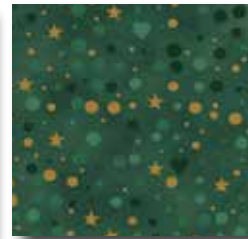
Fabric B:	2 Strips	2¼ x 23¼" (5,5 x 59 cm)
Fabric B:	2 Strips	2¼ x 27" (5,5 x 68,5 cm)
Fabric D:	1 Rectangle	32 x 32" (80 x 80 cm) Backing
Fabric C:	3 Strips	2¾ x 44" (7 x 112 cm) Binding



A: 4595-290
1 Panel



B: 4599-408
12" (30 cm)



C: 4599-808
10" (25 cm)



D: 4599-211
32" (80 cm)

SEWING OF CALENDAR: Seam allowance is 1/4" (0,75 cm).

This calendar is in one piece, see above image.

If you want it to have 24 small pockets, the panel must be folded four times and sewn.
So nothing must be cut.

At the left and right sides of each grid square you'll find two small black lines and text telling you to fold here, see photo.



Start with the bottom row of the pockets.
Fold at each side of the row at the fold mark closest to the bottom grid, see photo.



Place folded line under the grid above.

In order to make sure to have the same height of the pockets at the sides and at the center, it's a good idea to measure from top fold to bottom of grid. This measure you must have at the center of the pocket row too.

Pin the pocket row.



Now fold the third row of pockets. Measure and pin. See photos.

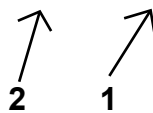


Next fold the rest of the pocket rows like above. Measure and pin.

Now sew a stitching from under the big top rectangle to the bottom. Sew between all rows, see image (1).

Also attach the pockets at the seam allowance at both left and right side of the calendar (2).

After sewing of these stitchings the 24 pockets come forward.



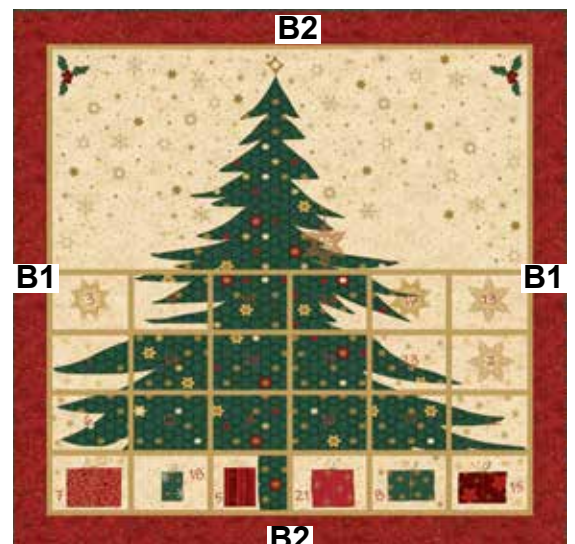
Hereafter join the strips in fabric B on each side of the calendar (B1) and next join the strips at the top and the bottom (B2).

QUILTING AND BINDING:

Layer top, batting and backing in fabric D and baste the pieces.

Quilt as you prefer by hand or by machine ➡.

Sew hanging sleeve in fabric D and place under top binding in fabric C ➡.



We wish you much success and pleasure with our fabrics and pattern.
Your Team from stoffabrics.