

Red Alert

By Color Pop Studio

Quilt 1

A Free Project Sheet
NOT FOR RESALE

Quilt Design by Heidi Pridemore



Skill Level: Advanced Beginner



facebook

Finished Quilt Size: 39" x 39"

49 West 37th Street, 14th floor, New York, NY 10018

Toll Free: 800-294-9495

fax: 212-679-4578

www.blankquilting.net

Please check our website for pattern updates before starting this project.

RED ALERT

Quilt 1

Finished Quilt Size: 39" x 39"

Fabrics in the Red Alert Collection



Floral with Background Squares - Gray – 1277-90



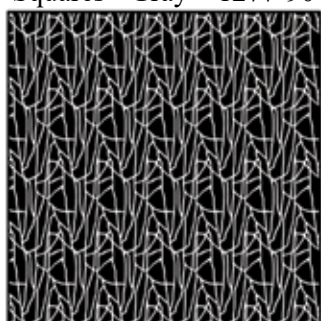
Floral Allover - White 1278-01



Floral Allover - Black 1278-99



Graphic Leaves - White 1279-01



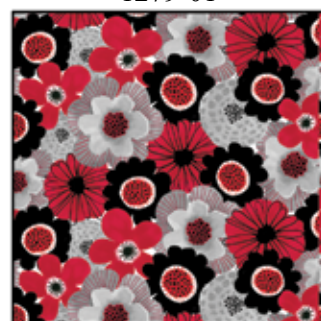
Abstract Lines - Black 1280-99



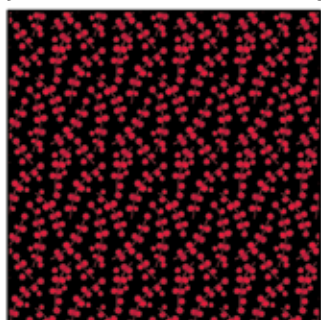
Flowers and Leaf - Red 1281-88



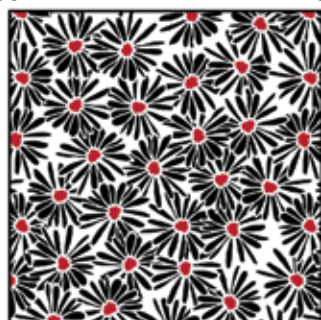
Large Floral - White 1282-01



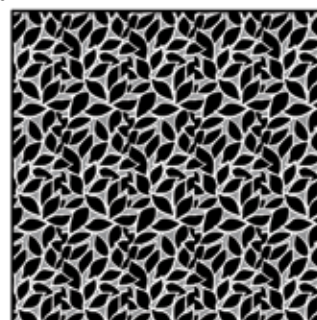
Floral Collage - Red 1283-88



Dotted Stems - Black 1284-99



Daisies - White 1285-01



Leaves - Gray 1286-90

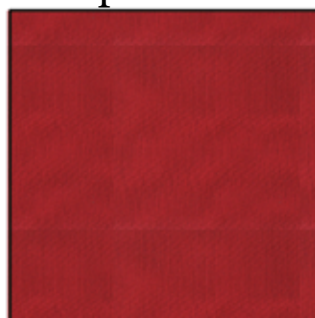
Select Fabrics from the Eclipse Collection



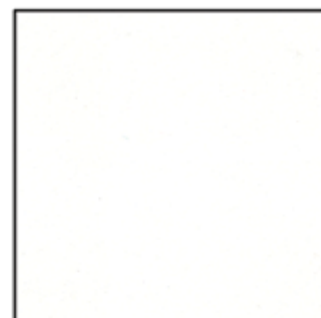
Black 3955-Black



Dove 3955-Dove



Red 3955-Red



White 3955-White

Materials

1/4 yard	Floral Collage - Red (A)	1283-88
3/8 yard	Eclipse - Dove (B)	3955-Dove
5/8 yard	Eclipse - Red (C)	3955-Red
3/8 yard	Floral Allover - Black (D)	1278-99
3/8 yard	Daisies - White (E)	1285-01
1/4 yard	Large Floral - White (F)	1282-01
3/8 yard	Dotted Stems - Black (G)	1284-99
3/8 yard	Eclipse - White (H)	3955-White
3/8 yard	Abstract Lines - Black (I)	1280-99*
1/4 yard	Floral with Background Squares - Gray (J)	1277-90
1/4 yard	Leaves - Gray (K)	1286-90
2 3/4 yards	Graphic Leaves - White (Backing)	1279-01

*Includes binding

Cutting Instructions

Please note: All strips are cut across the width of fabric (WOF) from selvage to selvage unless otherwise noted.

From the Floral Collage - Red (A), cut:

- (1) 6 1/2" x WOF strip. Sub-cut (4) 6 1/2" squares.

From the Eclipse - Dove (B), cut:

- (2) 4 1/4" x WOF strips. Sub-cut (18) 4 1/4" squares. Cut the squares across both diagonals to make (72) 4 1/4" triangles.

From the Eclipse - Red (C), cut:

- (2) 4 1/4" x WOF strips. Sub-cut (18) 4 1/4" squares. Cut the squares across both diagonals to make (72) 4 1/4" triangles.
- (2) 2" x 36 1/2" WOF strips.
- (2) 2" x 39 1/2" WOF strips.

From the Floral Allover - Black (D), cut:

- (1) 4 1/4" x WOF strip. Sub-cut (8) 4 1/4" squares. Cut the squares across both diagonals to make (32) 4 1/4" triangles.
- (1) 3 7/8" x WOF strip. Sub-cut (8) 3 7/8" squares.

From the Daisies - White (E), cut:

- (2) 4 1/4" x WOF strips. Sub-cut (18) 4 1/4" squares. Cut the squares across both diagonals to make (72) 4 1/4" triangles.

From the Large Floral - White (F), cut:

- (1) 6 1/2" x WOF strip. Sub-cut (4) 6 1/2" squares.

From the Dotted Stems - Black (G), cut:

- (1) 4 1/4" x WOF strip. Sub-cut (8) 4 1/4" squares. Cut the squares across both diagonals to make (32) 4 1/4" triangles.
- (1) 3 7/8" x WOF strip. Sub-cut (8) 3 7/8" squares.

From the Eclipse - White (H), cut:

- (2) 3 7/8" x WOF strips. Sub-cut (18) 3 7/8" squares.

From the Abstract Lines - Black (I), cut:

- (4) 2 1/2" x WOF strips for the binding.

From the Floral with Background Squares - Gray (J):

- Fussy cut (1) 6 1/2" square, centered on (4) squares.

From the Leaves - Gray (K), cut:

- (1) 4 1/4" x WOF strip. Sub-cut (2) 4 1/4" squares and (2) 3 7/8" squares. Cut the 4 1/4" squares across both diagonals to make (8) 4 1/4" triangles.

From the Graphic Leaves - White (Backing), cut:

- (2) 47" x WOF strips for the backing. Sew the strips together and trim to make the 47" x 47" back.

Block Assembly

Note: Pay attention to the unit orientations when assembling various components.

1. Place (1) 3 7/8" Fabric D square on top of (1) 3 7/8" Fabric H square, right sides together. Draw a line across the diagonal of the top square (Fig. 1). Sew 1/4" away from each side of the drawn diagonal line (Fig. 1). Cut the (2) squares apart on the drawn diagonal line (Fig. 2) to make (2) half-square triangles. Trim the half-square triangles to measure 3 1/2" square to make (2) Unit 1 squares (Fig. 3). Repeat to make (16) Unit 1 squares total.

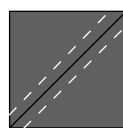


Fig. 1

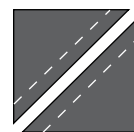


Fig. 2

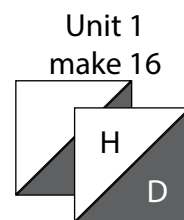


Fig. 3

2. Repeat Step 1 and refer to Figures 4-5 for fabric identification and placement to make (16) Unit 2 squares and (4) Unit 3 squares.

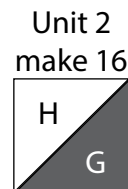


Fig. 4

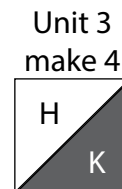


Fig. 5

3. Sew (1) 4 1/4" Fabric D triangle and (1) 4 1/4" Fabric B triangle together along short sides to make (1) DB triangle. Sew (1) 4 1/4" Fabric E triangle and (1) 4 1/4" Fabric C triangle together along short sides to make (1) EC triangle. Sew the DB and EC triangles together along the long sides to make (1) Unit 4 square (Fig. 6). The square should measure 3 1/2". Repeat to make (32) Unit 4 squares.



Fig. 6

4. Sew (2) Unit 4 squares together along the Fabric C sides to make (1) Unit 5 strip (Fig. 7). Repeat to make (16) Unit 5 strips total.

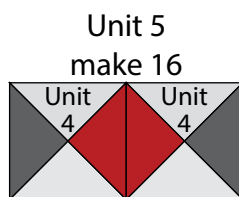


Fig. 7

5. Repeat Steps 3-4 and refer to Figures 8-9 for fabric identification, placement and orientation to make (16) Unit 6 strips and (4) Unit 7 strips.

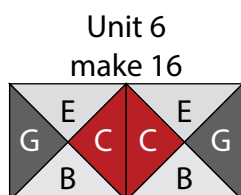


Fig. 8

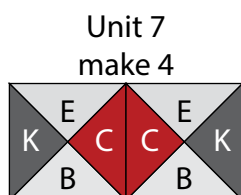


Fig. 9

6. Sew (1) Unit 1 square to each end of (1) Unit 5 strip to make the top row. Repeat to make the bottom row. Sew (1) Unit 5 strip to each side of (1) 6 1/2" Fabric A square to make the middle row. Sew the (3) rows together to make (1) Block One square (Fig. 10). Repeat to make (4) Block One squares total.

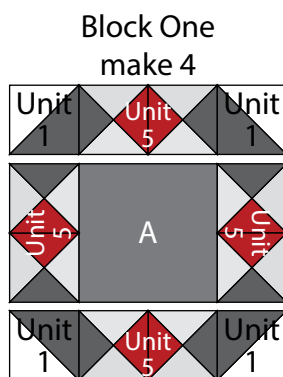


Fig. 10

7. Sew (1) Unit 2 square to each end of (1) Unit 6 strip to make the top row. Repeat to make the bottom row. Sew (1) Unit 6 strip to each side of (1) 6 1/2" Fabric F square to make the middle row. Sew the (3) rows together to make (1) Block Two square (Fig. 11). Repeat to make (4) Block Two squares total.

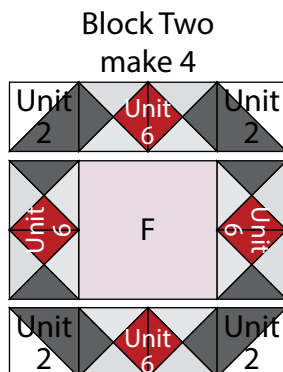


Fig. 11

8. Sew (1) Unit 3 square to each end of (1) Unit 7 strip to make the top row. Repeat to make the bottom row. Sew (1) Unit 7 strip to each side of (1) 6 1/2" Fabric J square to make the middle row. Sew the (3) rows together to make (1) Block Three square (Fig. 12).

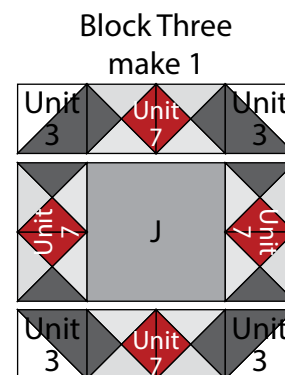


Fig. 12

Quilt Top Assembly

(Follow the Quilt Layout while assembling the quilt top.)

9. Sew (1) Block One square to each side of (1) Block Two square to make Row One. Repeat to make Row Three.

10. Sew (1) Block Two square to each side of (1) Block Three square to make Row Two.

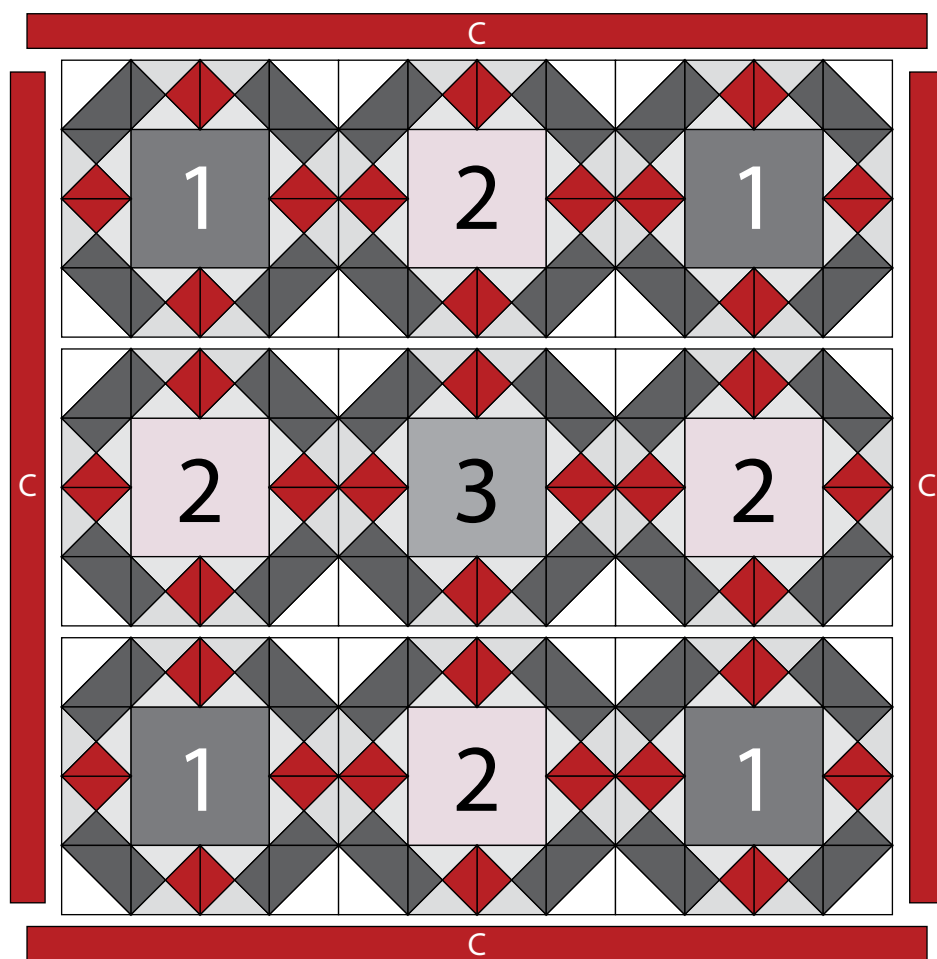
11. Sew the (3) rows together, in numerical order, to make the Center Block.

12. Sew (1) 2" x 36 1/2" Fabric C strip to each side of the Center Block. Sew (1) 2" x 39 1/2" Fabric C strip to the top and to the bottom of the Center Block to make the quilt top.

13. Layer and quilt as desired.

14. Sew the (4) 2 1/2" x WOF Fabric I strips together, end to end with 45-degree seams, to make the binding. Fold this long strip in half lengthwise with wrong sides together and press.

15. Bind as desired.



Quilt Layout

Every effort has been made to ensure that all projects are error free. All the information is presented in good faith, however no warranty can be given nor results guaranteed as we have no control over the execution of instructions. Therefore, we assume no responsibility for the use of this information or damages that may occur as a result. When errors are brought to our attention, we make every effort to correct and post a revision as soon as possible. Please make sure to check www.blankquilting.net for pattern updates prior to starting the project. We also recommend that you test the project prior to cutting for kits. Finally, all free projects are intended to remain free to you and are **not for resale**.