

Roaring Wild

by Girija Kulkarni



Quilt design by Denise Russell.

Quilt size: 55" x 55"

Skill Level: Beginner

Blank Quilting Corporation
49 West 37th Street ♦ New York, NY 10018
Tel: 800-294-9495 ♦ Fax: 212-679-4578
www.blankquilting.net

facebook

Free Project
NOT FOR RESALE

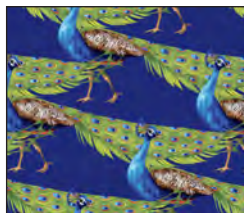
Roaring Wild - Fabrics in the Collection



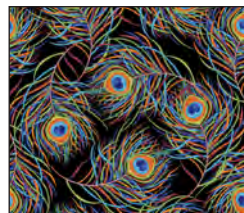
2838-39 Tigers
Brown



2839-39 Gazelles
Brown



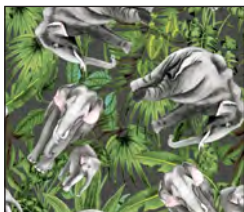
2840-77 Peacocks
Dk. Blue



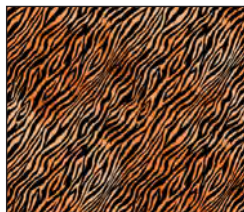
2841-99 Peacock
Feathers - Black



2842-99 Wildflowers
Black



2843-95 Elephants
Gray



2844-33 Tiger Skin
Amber



2845-66 Jungle
Foliage - Green



2846P-99 Jungle Panel 36"
Black



2837-99 Scenic Jungle
Black

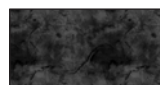
Selected fabrics from the
Urban Legend Collection by Tana Mueller



7101-35
Fawn



7101-41
Ivory



7101-98
Black

Roaring Wild - Quilt 2

Page 1

Materials

Yardages and cutting instructions are based on 42" of usable fabric width.

One 2846P-99 Jungle Panel - 36" - Black
1/3 yard 2844-33 Tiger Skin - Amber
3/8 yard 2839-39 Gazelles - Brown
3/8 yard 2841-99 Peacock Feathers - Black
1/2 yard 7101-35 Urban Legend - Fawn
1/2 yard 7101-98 Urban Legend - Black
5/8 yard 2842-99 Wildflowers - Black
3/4 yard 2845-66 Jungle Foliage - Green
1-1/2 yards 7101-41 Urban Legend - Ivory
3-1/2 yards 2843-95 Elephants - Gray for backing
63" x 63" piece of Air Lite® Colour Me 100% Cotton batting

Cut Fabrics

Note: All strips are cut across the width of the fabric (WOF) from selvage to selvage unless otherwise indicated.

From 2846P-99 Jungle Panel - 36" - Black, trim:

*Four 13-1/2" squares.

From 2844-33 Tiger Skin - Amber, cut:

*Four 2" x WOF strips for border 2.

From each, cut:

2839-39 Gazelles - Brown

2841-99 Peacock Feathers - Black

*Two 5-1/2" x WOF strips. Sub-cut eight 5-1/2" squares.

From 7101-35 Urban Legend - Fawn, cut:

*Five 3" x WOF strips. Sub-cut sixty-eight 3" squares.

From 7101-98 Urban Legend - Black, cut:

*Six 2-1/2" x WOF strips for binding.

From 2842-99 Wildflowers - Black, cut:

*Two 5-1/2" x WOF strips. Sub-cut twelve 5-1/2" squares.

*Four 2-1/4" x WOF strips for border 3.

From 2845-66 Jungle Foliage - Green, cut:

*Two 5-1/2" x WOF strips. Sub-cut eight

5-1/2" squares.

*Six 2" x WOF strips for border 7.

From 7101-41 Urban Legend - Ivory, cut:

*Two 1-1/2" x WOF strips. Sub-cut two 1-1/2" x 13-1/2" strips and one 1-1/2" x 28" strip.

*Six 3" x WOF strips. Sub-cut seventy-six 3" squares.

*Six 1-1/2" x WOF strips for border 6.

*Eight 2" x WOF strips for borders 1 and 4.

From 2843-95 Elephants - Gray, cut:

*Two 98" x WOF panels, pieced vertically.

Assemble Blocks

Notes: Measurements include 1/4" seam allowances. Sew with right sides together unless otherwise stated. If no direction is specified, press the seam toward the darker fabric.

1. Draw a diagonal line from corner to corner on the wrong side of the 3" 7101-41 Urban Legend - Ivory and 3" 7101-35 Urban Legend - Fawn squares. With right sides together, place one marked Ivory square on a corner of one 5-1/2" 2842-99 Wildflowers - Black square and stitch on the drawn line. Repeat with the opposite corner of the same square. Trim seam allowances to 1/4" and press open. Similarly, sew one more Ivory square to one corner and a Fawn square to the last corner of the square (*figure 1*). Make four 5-1/2" corner blocks.

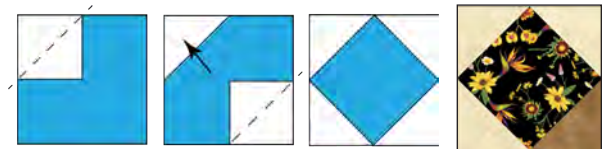


Figure 1 - Make (4) 5-1/2" corner blocks.

2. Repeat Step 1 with the remaining Ivory and Fawn 3" squares, sewn on adjacent corners of each of the following 5-1/2 squares: 2842-99 Wildflowers - Black, 2839-39 Gazelles - Brown, 2841-99 Peacock Feathers - Black, and 2845-66 Jungle Foliage - Green to make thirty-two assorted 5-1/2" blocks (*figure 2*, next page).

Roaring Wild - Quilt 2



Figure 2 – Make (8) 5-1/2" blocks of each type.

3. Sew a 1-1/2" x 13-1/2" 7101-41 Urban Legend – Ivory strip between two 13-1/2" 2846P-99 Jungle Panel - 36" – Black squares and press the seams away from the center. Repeat with one more Ivory strip and two more 13-1/2" squares. Sew a 1-1/2" x 28" Ivory strip in between the units to make a 28" center block (*figure 3*). Press the seams away from the blocks.



Figure 3 – Make (1) 28" center block.

Assemble Quilt Top

4. For border 1, trim two 2" 7101-41 Urban Legend – Ivory strips to 28". Sew one strip to each side of the center block. Press the seams away from the center. Trim two more 2" Ivory strips to 31" and sew one to the top and one to the bottom. Press as before.
5. For border 2, trim two 2" 2844-33 Tiger Skin – Amber strips to 31" and sew one strip to each side of the center. Trim two more 2" Amber

strips to 34" and sew one to the top and one to the bottom. Press as before.

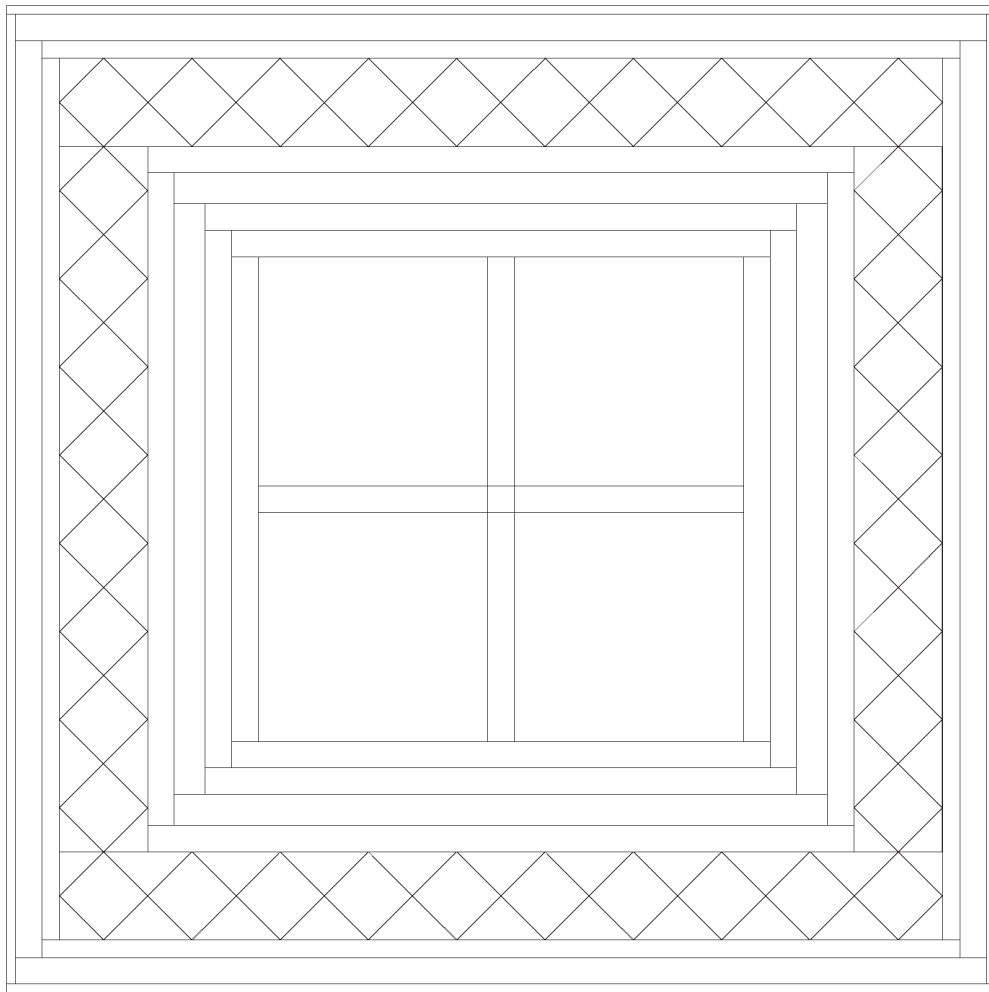
6. For border 3, trim two 2-1/4" 2842-99 Wildflowers – Black strips to 34" and sew one strip to each side of the center. Trim two more 2-1/4" Black strips to 37-1/2" and sew one to the top and one to the bottom.
7. For border 4, trim two 2" 7101-41 Urban Legend – Ivory strips to 37-1/2" and sew them to the sides of the center. Trim the last two 2" Ivory strips to 40-1/2" and sew one to the top and one to the bottom. The quilt measures 40-1/2" x 40-1/2" up to here.
8. For border 5 and referring to the quilt photo for block placement and orientation, arrange eight blocks for each side of the quilt. Sew blocks together and sew one border strip to each side of the quilt center. Press the seam toward quilt center.
9. Repeat step 8 with the four Step 1 corner blocks and the remaining blocks, and sew one border strip to the top and one to the bottom of the quilt center.
10. For border 6, join the six 1-1/2" 7101-41 Urban Legend – Ivory strips together end to end using diagonal seams. Measure the vertical length of the quilt top through the center and cut two border strips that length. Sew one strip to each side of the quilt top and press the seams toward the border strips. Measure the width of the quilt top through the center. Cut two border strips that length and sew one to the top and one to the bottom. Press the seams toward the borders.
11. Repeat Step 10 with the six 2" 2845-66 Jungle Foliage – Green strips to make and add border 7.

Roaring Wild - Quilt 2

Page 3

Finishing

12. Create a quilt sandwich with the batting between the quilt top and the backing. Pin or baste layers together, mark the quilting design, and quilt by hand or machine. When quilting is complete, remove pins or basting, and trim batting and backing even with raw edges of the quilt top.
13. Join the six 2-1/2" 7101-98 Urban Legend – Black binding strips together end to end using a diagonal seam to make one long strip. With wrong sides together, fold in half lengthwise and press. Sew binding to the edges of the quilt, mitering corners, and overlapping ends. Fold binding to the back of the quilt and stitch it in place by hand to finish.



Quilt Diagram

©2022 Blank Quilting Corporation

Every effort has been made to ensure that all projects are error free. All the information is presented in good faith; however, no warranty can be given nor results guaranteed as we have no control over the execution of instructions. Therefore, we assume no responsibility for the use of this information or damages that may occur as a result. When errors are brought to our attention, we make every effort to correct and post a revision as soon as possible. Please make sure to check www.blankquilting.net for pattern updates prior to starting the project. We also recommend that you test the project prior to cutting for kits. Finally, all free projects are intended to remain free to you and are not for resale.