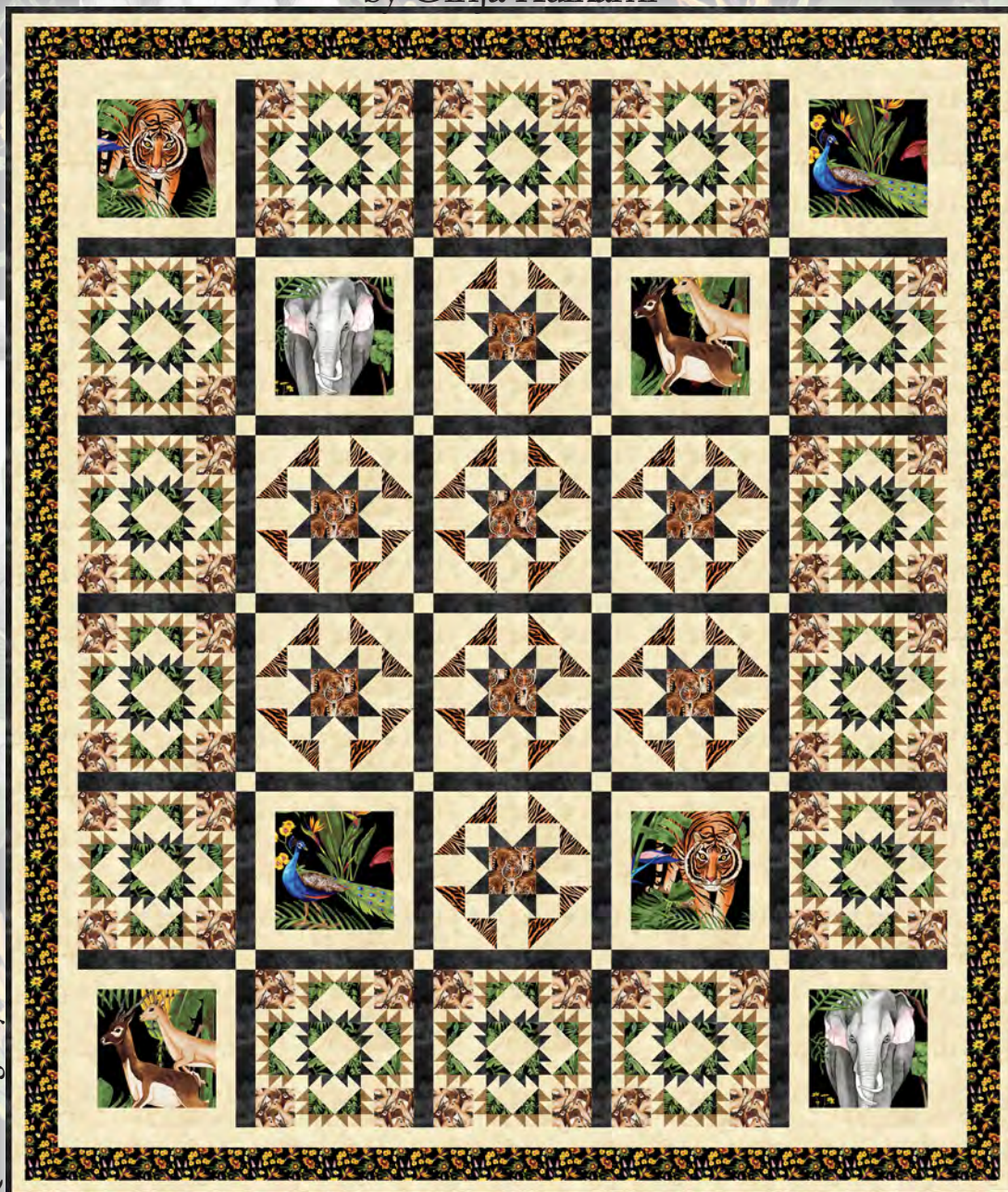




Quilt 1

Roaring Wild

by Girija Kulkarni



Quilt design by Denise Russell.

Quilt size: 76" x 89.5"

Skill Level: Intermediate

Blank Quilting Corporation
49 West 37th Street ♦ New York, NY 10018
Tel: 800-294-9495 ♦ Fax: 212-679-4578
www.blankquilting.net

facebook

Free Project
NOT FOR RESALE

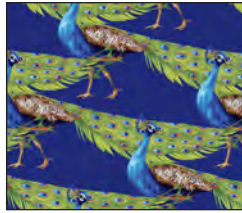
Roaring Wild - Fabrics in the Collection



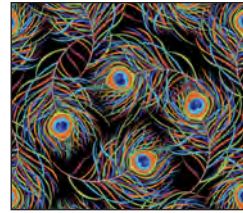
2838-39 Tigers
Brown



2839-39 Gazelles
Brown



2840-77 Peacocks
Dk. Blue



2841-99 Peacock
Feathers - Black



2842-99 Wildflowers
Black



2843-95 Elephants
Gray



2844-33 Tiger Skin
Amber



2845-66 Jungle
Foliage - Green



2846P-99 Jungle Panel 36"
Black



2837-99 Scenic Jungle
Black

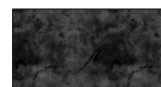
Selected fabrics from the
Urban Legend Collection by Tana Mueller



7101-35
Fawn



7101-41
Ivory



7101-98
Black

Roaring Wild - Quilt 1

Materials

Yardages and cutting instructions are based on 42" of usable fabric width.

Two 2846P-99 Jungle Panel - 36" - Black
1/4 yard 2838-39 Tigers - Brown
5/8 yard 2839-39 Gazelles - Brown
5/8 yard 2844-33 Tiger Skin - Amber
5/8 yard 2845-66 Jungle Foliage - Green
3/4 yard 7101-35 Urban Legend - Fawn
3/4 yard 2842-99 Wildflowers - Black
2-1/8 yards 7101-98 Urban Legend - Black
4-1/4 yards 7101-41 Urban Legend - Ivory
5-5/8 yards 2843-95 Elephants - Gray for backing
84" x 98" piece of Air Lite® Colour Me 100% Cotton batting

Cut Fabrics

Note: All strips are cut across the width of the fabric (WOF) from selvage to selvage unless otherwise indicated.

From 2846P-99 Jungle Panel - 36" – Black, trim:

*Eight 9-1/2" squares.

From 2838-39 Tigers – Brown, cut:

*One 4-1/8" x WOF strip. Sub-cut eight 4-1/8" squares.

From 2839-39 Gazelles – Brown, cut:

*Five 3-1/2" x WOF strips. Sub-cut fifty-six 3-1/2" squares.

From 2844-33 Tiger Skin – Amber, cut:

*Three 2-7/8" x WOF strips. Sub-cut thirty-two 2-7/8" squares.
*Two 3-1/4" x WOF strips. Sub-cut sixteen 3-1/4" squares.

From 2845-66 Jungle Foliage – Green, cut:

*Six 2-7/8" x WOF strips. Sub-cut eighty-four 2-7/8" squares.

From 7101-35 Urban Legend – Fawn, cut:

*Eleven 1-7/8" x WOF strips. Sub-cut (224) 1-7/8" squares.

From 2842-99 Wildflowers – Black, cut:

*Eight 3" x WOF strips for border 2.

From 7101-98 Urban Legend – Black, cut:

*Six 1-7/8" x WOF strips. Sub-cut (112) 1-7/8" squares.
*One 2-1/4" x WOF strip. Sub-cut eighteen 2-1/4" squares.
*Three 12-1/2" x WOF strips. Sub-cut forty-nine 2" x 12-1/2" strips and forty-six 2-1/4" squares (for a total of 64).
*Nine 2-1/2" x WOF strips for binding.

From 7101-41 Urban Legend – Ivory, cut:

*Six 1-1/2" x WOF strips. Sub-cut (168) 1-1/2" squares.
*Sixteen 1-7/8" x WOF strips. Sub-cut (336) 1-7/8" squares.
*Four 2" x WOF strips. Sub-cut sixteen 2" x 9-1/2" strips.
*Two 2-1/4" x WOF strips. Sub-cut thirty-two 2-1/4" squares.
*Eight 2-7/8" x WOF strips. Sub-cut (112) 2-7/8" squares.
*Two 3-1/4" x WOF strips. Sub-cut sixteen 3-1/4" squares.
*Two 4-1/8" x WOF strips. Sub-cut thirty-two 2-1/4" x 4-1/8" strips.
*Three 5-1/4" x WOF strips. Sub-cut:
- Thirty-two 2-7/8" x 5-1/4" rectangles.
- Four 2-7/8" squares (for a total of 116).
*One 12-1/2" x WOF strip. Sub-cut sixteen 2" x 12-1/2" strips and twenty 2" squares.
*Eight 2" x WOF strips for border 1.
*Nine 1-1/2" x WOF strips for border 3.

From 2843-95 Elephants - Gray, cut:

*Two 98" x WOF panels, pieced vertically.

Assemble Blocks

Notes: Measurements include 1/4" seam allowances. Sew with right sides together unless otherwise stated. If no direction is specified, press the seam toward the darker fabric.





 <p>Make 32 for block 1. 3-1/4" 7101-41 Urban Legend – Ivory squares 3-1/4" 2844-33 Tiger Skin – Amber squares</p>	 <p>Make 448 for block 2. 1-7/8" 7101-41 Urban Legend – Ivory squares 1-7/8" 7101-35 Urban Legend – Fawn squares</p>
 <p>Make 224 for block 2. 1-7/8" 7101-41 Urban Legend – Ivory squares 1-7/8" 7101-98 Urban Legend – Black squares</p>	 <p>Make 168 for block 2. 2-7/8" 7101-41 Urban Legend – Ivory squares 2-7/8" 2845-66 Jungle Foliage – Green squares</p>

Table 1. Half-square triangles for blocks 1 and 2.

1. Draw a diagonal line from corner to corner on the wrong side of the 3-1/4" 7101-41 Urban Legend – Ivory squares. With right sides together, layer the marked Ivory squares atop the 3-1/4" 2844-33 Tiger Skin – Amber squares. Stitch 1/4" from each side of the diagonal line, cut on the drawn line, press each unit open with seams toward the darker fabric, and trim dog ears (*figure 1*). Make thirty-two 2-7/8" half-square triangles (HST).

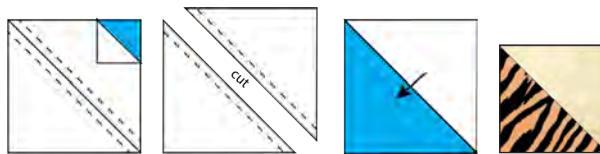


Figure 1 – Make (32) 2-7/8" Z units.

2. Working as in Step 1, make (448) 1-1/2" HST with the 1-7/8" 7101-41 Urban Legend – Ivory and 1-7/8" 7101-35 Urban Legend – Fawn squares, 224 1-1/2" HST with the remaining 1-7/8" Ivory squares and 1-7/8" 7101-98 Urban Legend – Black squares, and (168) 2-1/2" HST with the 2-7/8" 7101-41 Urban Legend – Ivory and 2-7/8" 2845-66 Jungle Foliage – Green squares (*figure 2*).

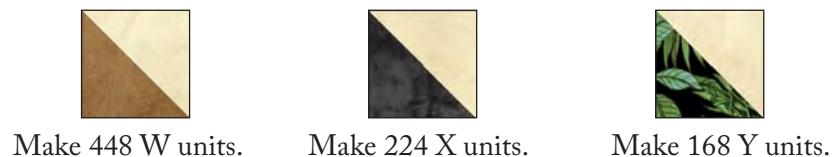


Figure 2

3. Sew two Step 2 W units together. Sew this strip to the left side of one Y unit. Press the seam toward the center. Sew a 1-1/2" 7101-41 Urban Legend – Ivory square and two W units together. Press the seams in one direction. Sew this strip to the top of the previous unit. Press as before. Repeat to make (112) 3-1/2" units. Sew the units two by two to make fifty-six 3-1/2" x 6-1/2" strips (*figure 3*, next page). Press the seams in one direction.



Figure 3 – Make (56) 3-1/2" x 6-1/2" units.

- Repeat Step 3 with the Step 2 X units and the remaining Y units to make fifty-six 3-1/2" units. Sew the units together in groups of four to make fourteen 6-1/2" block centers (figure 4). Press the seams open.

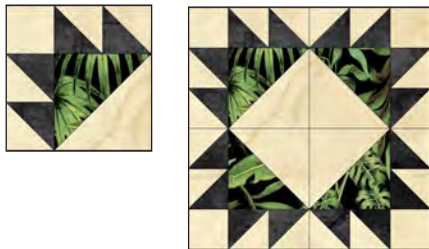


Figure 4 – Make (14) 6-1/2" units.

- Sew a Step 3 strip to opposite sides of the Step 4 units. Press the seams away from the center. Working with the 3-1/2" 2839-39 Gazelles – Brown squares and the remaining Step 3 strips, follow the diagram below to assemble fourteen 12-1/2" blocks (figure 5). Press the seams in one direction.



Figure 5 – Make (14) 12-1/2" blocks.

- Noting fabric orientation, sew one Step 1 Z unit to opposite sides of a 2-7/8" Ivory square (figure 6). Make sixteen 2-7/8" x 7-3/4" units.

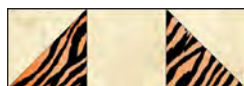


Figure 6 - Make (16) 2-7/8" x 7-3/4" units.

- Draw a diagonal line from corner to corner on the wrong side of the 2-7/8" 2844-33 Tiger Skin – Amber squares. Group the 2-7/8" x 5-1/4" 7101-41 Urban Legend – Ivory rectangles into two piles of sixteen strips each. Pile 1: with right sides together and noting stitching direction, layer one marked Amber square on the right side of an Ivory rectangle. Stitch on the diagonal line, cut 1/4" from the stitching line, and press open. Make sixteen Wa units.

Repeat this step with Pile 2, this time stitching the Amber square to the left side of the strips. Make sixteen Xa units. Sew a Wa unit to the left and an Xa unit to the right of a 2-7/8" Ivory square (figure 7). Press the seams toward the center. Make sixteen 2-7/8" x 12-1/2" rows.

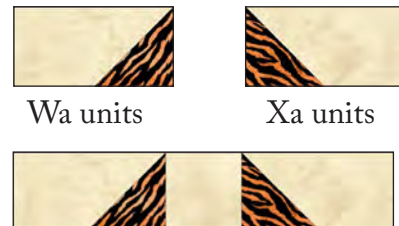


Figure 7 – Make (16) 2-7/8" x 12-1/2" rows.

- Draw a diagonal line from corner to corner on the wrong side of sixty-four 2-1/4" 7101-98 Urban Legend – Black squares. Noting the line orientation and with right sides together, layer a marked Black square on the left short end of a 2-14" x 4-1/8" 7101-41 Urban Legend – Ivory rectangle and stitch on the drawn line. Trim 1/4" away from the seam line and press open. Stitch another Black square to the opposite end of the same rectangle (figure 8). Repeat to make thirty-two 2-1/4" x 4-1/8" flying-geese units.



Figure 8 – Make (32) 2-1/4" x 4-1/8" units.

- Sew a Step 8 unit to the right and one to the left of a 4-1/8" 2838-39 Tigers – Brown square. Press the seams toward the center. Repeat to

make eight center rows. Noting fabric orientation, sew a 2-1/4" 7101-41 Urban Legend – Ivory square to opposite sides of the remaining Step 8 units to make sixteen rows. Press the seams away from the center. Sew one row to the top and one to the bottom of the center rows to make eight 7-3/4" star units (*figure 9*). Press the seams open.

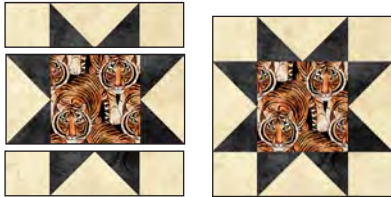


Figure 9 – Make (8) 7-3/4" units.

10. Sew a Step 6 unit to opposite sides of the Step 9 stars. Press the seams away from the center. Sew a Step 7 row to the top and one to the bottom of each unit to make eight 12-1/2" blocks (*figure 10*). Press the seams away from the center.

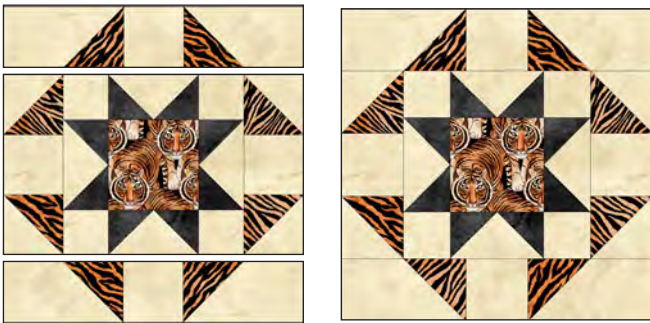


Figure 10 – Make (8) 12-1/2" blocks.

11. Sew one 2" x 9-1/2" 7101-41 Urban Legend – Ivory strip to opposite sides of a 9-1/2" 2846P-99 Jungle Panel - 36" – Black square. Press the seams away from the center. Sew a 2" x 12-1/2" Ivory strip to the top and one to the bottom, and press as before (*figure 11*). Repeat to make eight assorted 12-1/2" blocks.



Figure 11 – Make (8) 12-1/2" blocks.

Assemble Quilt Top

12. Referring to the quilt photo for block placement, lay out five blocks and four 2" x 12-1/2" 7101-98 Urban Legend – Black sashing strips in six rows, and join the blocks and sashing strips together in each row. Press the seams toward the sashing.
13. To make the horizontal sashing rows, sew together five Black sashing strips and four 2" 7101-41 Urban Legend – Ivory cornerstone squares. Repeat to make a total of five sashing strips. Press the seams toward the sashing.
14. Matching adjacent seams, sew block rows and horizontal sashing strips together. Press the seams in one direction.
15. For border 1, join the eight 2" 7101-41 Urban Legend – Ivory strips together end to end using diagonal seams. Measure the vertical length of the quilt top through the center and cut two border strips that length. Sew one strip to each side of the quilt top and press the seams toward the border strips. Measure the width of the quilt top through the center. Cut two border strips that length and sew one to the top and one to the bottom. Press the seams toward the borders.
16. Repeat Step 15 with the eight 3" 2842-99 Wildflowers – Black strips to make and add border 2.

Roaring Wild - Quilt 1

17. Repeat Step 15 with the nine 1-1/2" 7101-41 Urban Legend – Ivory to make and add border 3.

Finishing

18. Create a quilt sandwich with the batting between the quilt top and the backing. Pin or baste layers together, mark the quilting design, and quilt by hand or machine. When quilting is complete, remove pins or basting, and trim batting and backing even with raw edges of the quilt top.

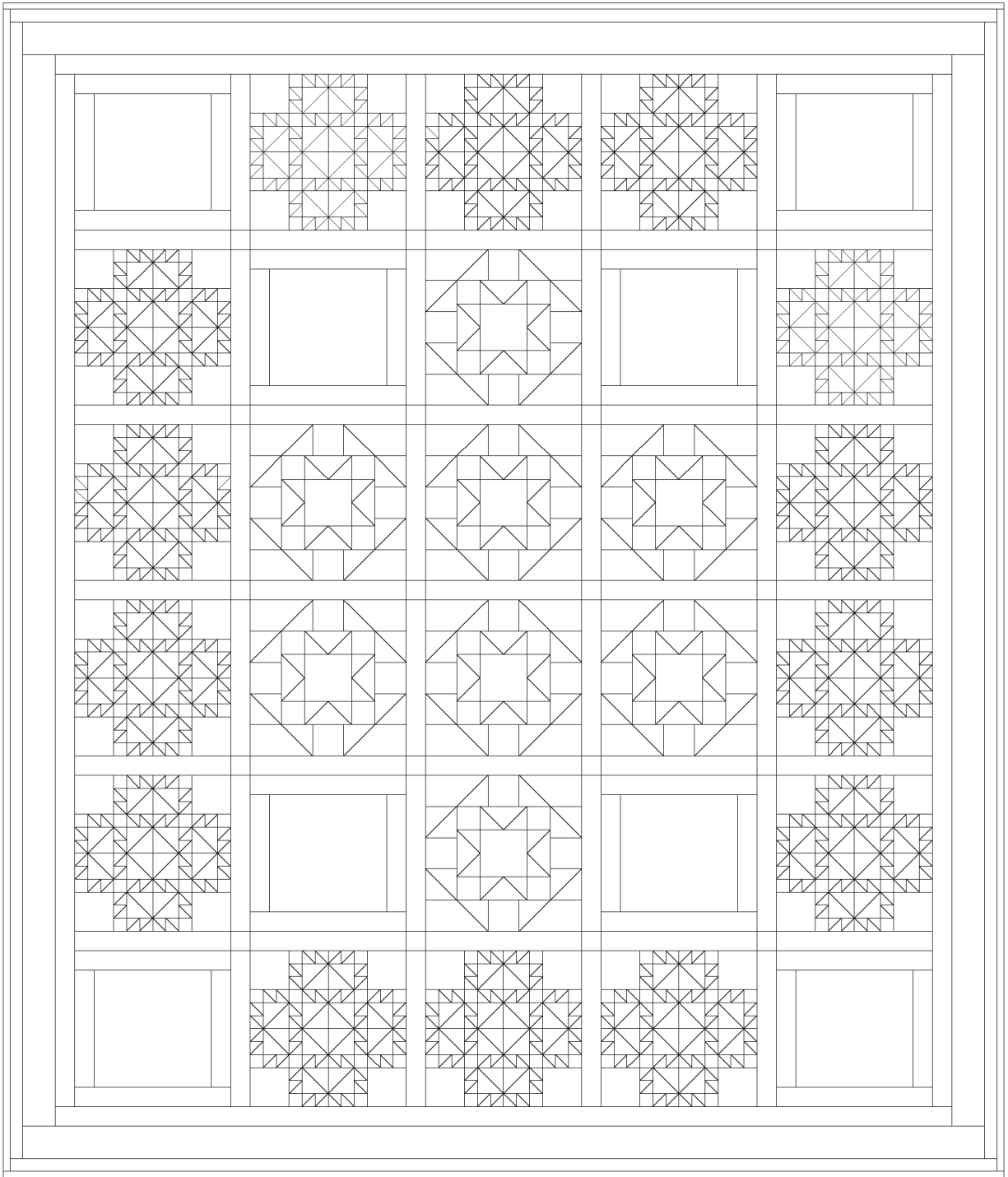
19. Join the nine 2-1/2" 7101-98 Urban Legend – Black binding strips together end to end using a diagonal seam to make one long strip. With wrong sides together, fold in half lengthwise and press. Sew binding to the edges of the quilt, mitering corners, and overlapping ends. Fold binding to the back of the quilt and stitch it in place by hand to finish.



©2022 Blank Quilting Corporation

Every effort has been made to ensure that all projects are error free. All the information is presented in good faith; however, no warranty can be given nor results guaranteed as we have no control over the execution of instructions. Therefore, we assume no responsibility for the use of this information or damages that may occur as a result. When errors are brought to our attention, we make every effort to correct and post a revision as soon as possible. Please make sure to check www.blankquilting.net for pattern updates prior to starting the project. We also recommend that you test the project prior to cutting for kits. Finally, all free projects are intended to remain free to you and are not for resale.

Roaring Wild - Quilt 1



Quilt Diagram