



Spring Jubilee

Quilt 1
by Denise Russell



Quilt size: 45" x 45"

Skill Level: Advanced Beginner

Blank Quilting Corporation
49 West 37th Street ♦ New York, NY 10018
Tel: 800-294-9495 ♦ Fax: 212-679-4578
www.blankquilting.net

facebook

Free Project
NOT FOR RESALE

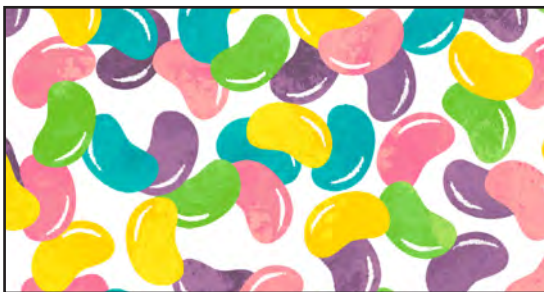
Spring Jubilee - Fabrics in the Collection



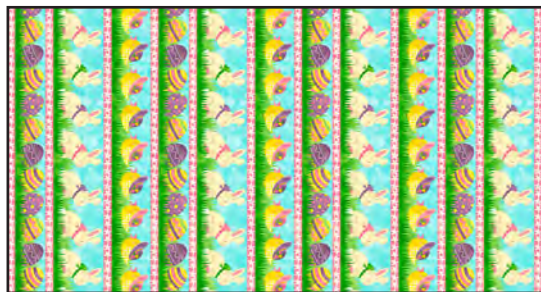
9903-66 Easter Bunnies - Green



9904-22 Easter Eggs - Pink



9905-01 Jelly Beans - White



9906-70 Easter Stripe - Lt. Blue



9907-70 Tossed Chicks - Lt. Blue

Selected fabrics from the Starlet Collection



6383 Yellow

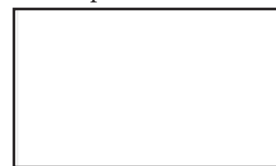


6383 Petal



6383 Teal

Selected fabric from the Eclipse Collection



3955 White

Materials

Yardages and cutting instructions are based on 42" of usable fabric width.

1/4 yard Starlet 6383 Yellow
1/3 yard Starlet 6383 Petal
3/8 yard 9904-22 Easter Eggs-Pink
3/8 yard 9907-70 Tossed Chicks-Lt. Blue
5/8 yard Eclipse 3955 White
5/8 yard 9905-01 Jelly Beans-White
2/3 yard Starlet 6383 Teal (includes binding)
3/4 yard 9903-66 Easter Bunnies-Green
1-1/2 yards 9906-70 Easter Stripe-Lt. Blue
3-1/8 yards 9907-70 Tossed Chicks-Lt. Blue for backing
53" x 53" piece of batting

Cut Fabrics

*Note: All strips are cut across the width of the fabric (WOF) from selvage to selvage unless otherwise noted. If cut across the length of the fabric (LOF), the **LOF** notation will be indicated.*

From Starlet 6383 Yellow:

*Cut one 2-7/8" x WOF strip. Sub-cut eight 2-7/8" squares.

From Starlet 6383 Petal:

*Cut one 6-1/2" x WOF strip. Sub-cut four 6-1/2" squares.

From 9904-22 Easter Eggs-Pink:

*Cut one 8-7/8" x WOF strip. Sub-cut two 8-7/8" squares; cut once diagonally. (A)

From 9907-70 Tossed Chicks-Lt. Blue:

*Cut one 12-1/2" x WOF strip. Sub-cut one 12-1/2" square.

From Eclipse 3955 White:

*Cut two 1-1/2" x WOF strips. Sub-cut:
- Four 1-1/2" x 8-1/2" strips; and
- Four 1-1/2" x 9" strips.
*Cut three 2-1/2" x WOF strips. Sub-cut:
- Eight 2-1/2" squares; and
- Eight 2-1/2" x 8-1/2" rectangles.

*Cut two 2-7/8" x WOF strips. Sub-cut twenty 2-7/8" squares.

From 9905-01 Jelly Beans-White:

*Cut one 6-7/8" x WOF strip. Sub-cut two 6-7/8" squares; cut once diagonally. (B)
*Cut five 1-1/2" x WOF strips for border 3.

From Starlet 6383 Teal:

*Cut one 2-7/8" x WOF strip. Sub-cut twelve 2-7/8" squares.
*Cut four 1-1/2" x WOF strips for border 1.
*Cut five 2-1/2" x WOF strips for binding.

From 9903-66 Easter Bunnies-Green:

*Cut one 19" x WOF strip. Sub-cut:
- One 19" squares; cut twice diagonally for setting triangles. (C)
- Two 9-3/4" squares; cut once diagonally for corner triangles. (D)

From 9906-70 Easter Stripe-Lt. Blue:

*Cut four 4-1/2" x LOF strips for border 2.

Assemble Blocks

Note: Measurements include 1/4" seam allowances. Sew with right sides together unless otherwise stated. If no direction is specified, press seams toward darker fabric.

1. Draw a diagonal line on the wrong side of the 6-1/2" Starlet 6383 Petal squares. With right sides together, place one marked Petal square on a corner of one 12-1/2" 9907-70 Tossed Chicks-Lt. Blue square and stitch on the drawn line. Repeat with the opposite corner of the same square. Trim seam allowances to 1/4" and press open. Repeat with the other corners of the square (*figure 1*). Make one 12-1/2" block.



Figure 1

2. Draw a diagonal line on the wrong side of the 2-7/8" Eclipse 3955 White squares. With right sides together, layer the marked White squares atop the 2-7/8" Starlet 6383 Yellow squares. Stitch 1/4" on each side of the marked line, cut on the drawn line, press each unit open with seams toward dark fabric, and trim dog ears (*figure 2*). Make a total of sixteen 2-1/2" half-square triangles (HST).



Figure 2 – Make 16.

3. Repeat step 2 with the remaining marked 2-7/8" Eclipse 3955 White squares and the 2-7/8" Starlet 6383 Teal squares to make twenty-four 2-1/2" HST (*figure 3*).



Figure 3 – Make 24.

4. Sew one 1-1/2" x 8-1/2" Eclipse 3955 White strip to the right side of one 9905-01 Jelly Beans-White B triangle. Press the seam toward strip. Sew one 1-1/2" x 9" Eclipse 3955 White strip to the left side of the same triangle. Press the seam toward the strip again and do not trim. Sew one 9904-22 Easter Eggs-Pink A triangle to this unit. Press the seam toward this triangle and trim white ends. Repeat with the other And B triangles (*figure 4*). The resulting squares measure 8-1/2".

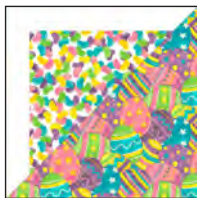


Figure 4 – Make 4.

5. Noting fabric orientation, sew two step 1 and two step 2 HST together. Press the seams in one direction. Changing the orientation of the HST, sew two more yellow and teal HST together. Repeat to make four strips of each type (*figure 5*).



Strip X



Strip Y

Figure 5 – Make 4 of each type.

6. Sew a step 5 X strip to the top of each step 4 unit (*figure 6*). Press the seams toward center.



Figure 6

7. Sew a 2-1/2" Eclipse 3955 White square to the teal end of the step 5 Y strips. Press the seams toward square. Sew strips to the left side of the step 6 units (*figure 7*). Press the seams toward center.

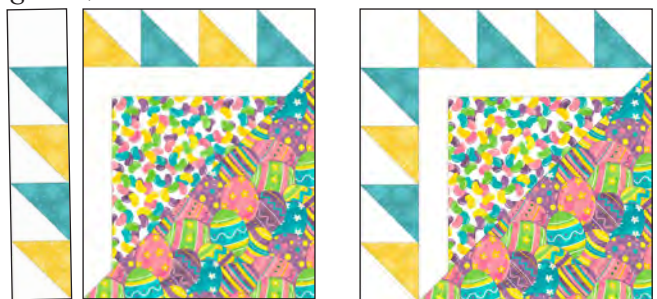


Figure 7

8. Noting fabric orientation, sew one step 2 HST to the right short end of a 2-1/2" x 8-1/2" Eclipse 3955 White rectangle (*figure 8*). Press the seam away from HST. Repeat to make four strips.



Figure 8 – Make 4.

9. Sew the last four Teal HST to the remaining 2-1/2" x 8-1/2" White rectangles (note HST orientation). Sew a 2-1/2" Eclipse 3955 White square next to the teal HST. Press the seams toward square (*figure 9*).



Figure 9

10. Sew the step 8 strips to the right side of the step 7 units (*figure 10*). Press the seams toward strips.



Figure 10

11. Sew the step 9 strips to the bottom of the step 10 units to complete four 12-1/2" blocks (*figure 11*).



Figure 11

Assemble Quilt Top

12. Following the photograph and quilt center assembly diagram for placement and orientation, lay out three diagonal rows of alternating blocks. Add the 9903-66 Easter Bunnies-Green setting triangles C to the beginning and the end of the rows. Sew the setting triangles and blocks together in each row, then matching adjacent seams sew the rows together in order. Press the seams in alternate directions for adjacent rows. Sew one 9903-66 Easter Bunnies-Green corner triangle D to each quilt top corner.

13. For border 1, sew four 1-1/2" Starlet 6383 Teal strips together end to end using diagonal seams. Measure the vertical length of the quilt top through the center and cut two border strips that length. Sew strips to the sides of the quilt top. Measure the width of the quilt top through its center. Cut two border strips that length and sew one to the top and one to the bottom. Press seams toward borders.

14. For border 2, mark the quilt center along the sides, top, and bottom. Mark the center of each 4-1/2" 9906-70 Easter Stripe-Lt. Blue border strip. Matching the centers, sew each border strip in place beginning and ending exactly 1/4" from the corners. DO NOT trim the extra length.

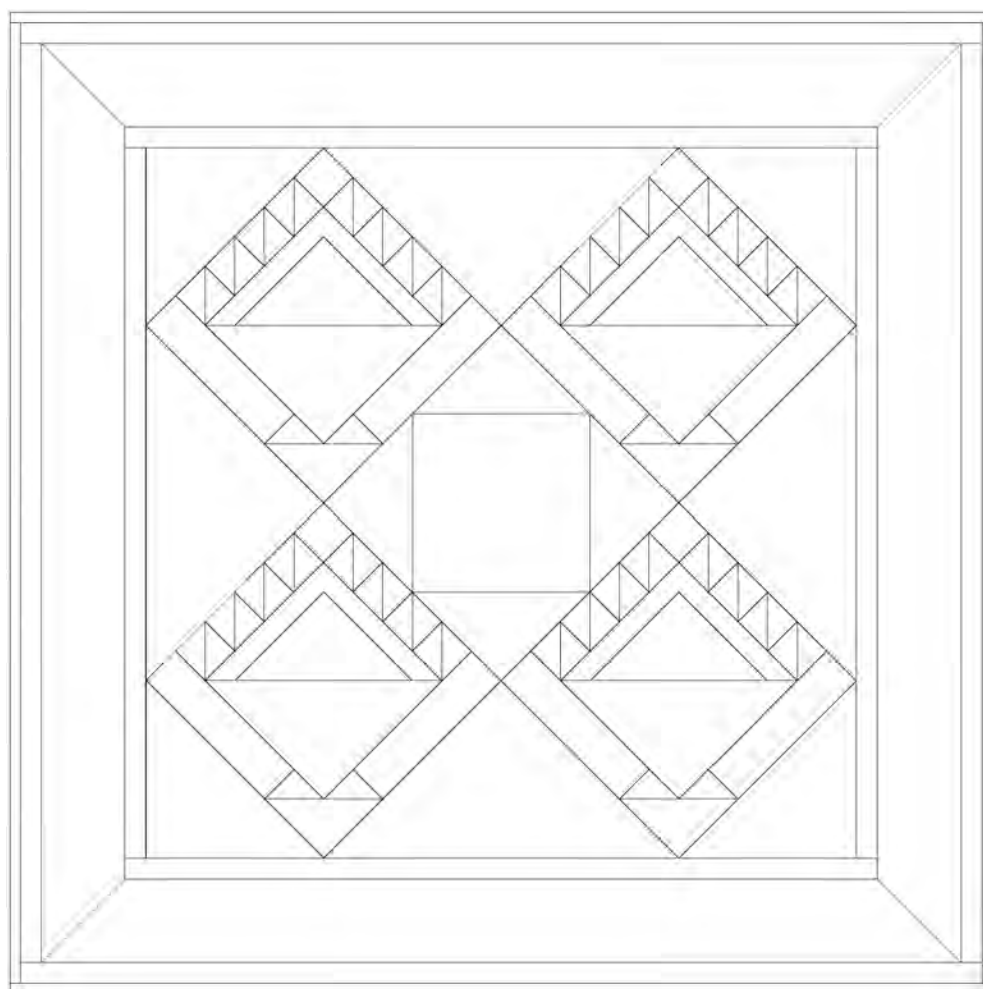
15. To miter the borders, fold one corner of the quilt on a 45° angle so that the border strips are directly on top of one another and the seams nest together. Place your rotary ruler on the fold of the quilt so that the long edge is against the fold and the 45° line is on the side of the seam. Draw a line from the corner of the quilt top to the outside edge of the border. Pin the borders together. Position your needle on the inside corner where the border meets the quilt. Stitch directly on the line you have drawn to the outside edge of the border. Trim the excess fabric leaving a 1/4" seam allowance. Press. Repeat the process for the remaining three corners of the quilt.

16. Repeat step 13 with the five 1-1/2" 9905-01 Jelly Beans-White strips to make and add border 3.

Finishing

17. Create a quilt sandwich with the batting between the quilt top and the backing. Pin or baste layers together, mark quilting design, and quilt by hand or machine. When quilting is complete, remove pins or basting, and trim batting and backing even with raw edges of the quilt top.

18. Join the five 2-1/2" Starlet 6383 Teal binding strips together end to end using a diagonal seam to make one long strip. Fold in half lengthwise and press. Sew binding to the edges of the quilt top, mitering corners, and overlapping ends. Fold binding to the back of the runner and stitch it in place by hand to finish.



Quilt Diagram

©2019 Blank Quilting Corporation

Every effort has been made to ensure that all projects are error free. All the information is presented in good faith; however, no warranty can be given nor results guaranteed as we have no control over the execution of instructions. Therefore, we assume no responsibility for the use of this information or damages that may occur as a result. When errors are brought to our attention, we make every effort to correct and post a revision as soon as possible. Please make sure to check www.blankquilting.net for pattern updates prior to starting the project. We also recommend that you test the project prior to cutting for kits. Finally, all free projects are intended to remain free to you and are not for resale.