

SLOPESIDE

by D. DonFrancisco



Blizzard of Fun Quilt

Designed by Denise Russell

Quilt size: 68" x 77"

Skill Level: Advanced Beginner

Blank Quilting Corporation

49 West 37th Street ♦ New York, NY 10018 - Tel: 800-294-9495 ♦ Fax: 212-679-4578

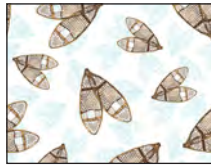
www.blankquilting.net

facebook

SLOPESIDE - Fabrics in the Collection



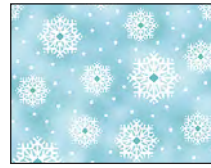
3292-11 Scenic Ski Slope - Lt. Blue



3293-01 Snowshoes - White



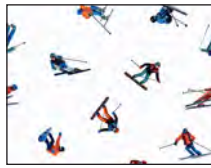
3294-67 Scarves & Mittens - Mint



3296-11 Snowflakes - Lt. Blue



3297-39 Ski Signs - Taupe



3298-01 Mini Skiers - White



3299-01 Skis - White

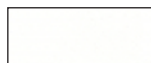


3300P-11 Slopeside Panel
24" - Lt. Blue



3295-11 Ski Blocks - Lt. Blue

Selected fabrics from the Eclipse Solids collection



3955
White



3955
Red

Blizzard of Fun Quilt

Materials

Yardages and cutting instructions are based on 42" of usable fabric width.

One 3295-11 Ski Blocks - Lt. Blue panel
 1/8 yard 3955 Eclipse Solids - Red
 1/4 yard 3297-39 Ski Signs - Taupe
 3/4 yard 3292-11 Scenic Ski Slope - Lt. Blue
 7/8 yard 3294-67 Scarves & Mittens - Mint
 2 yards 3296-11 Snowflakes - Lt. Blue
 2 1/2 yards 3955 Eclipse Solids - White
 4 7/8 yards 3293-01 Snowshoes - White for backing
 76" x 85" piece of Air Lite® Colour Me 100% Cotton batting

Cut Fabrics

Note: All strips are cut across the width of the fabric (WOF) from selvage to selvage unless otherwise indicated.

From 3295-11 Ski Blocks - Lt. Blue panel:

*Trim squares to 15 1/2".

From 3955 Eclipse Solids - Red, cut:

* (1) 1 3/4" x WOF strip. Sub-cut (20) 1 3/4" squares.

From 3297-39 Ski Signs - Taupe, cut:

* (1) 4 1/2" x WOF strip. Sub-cut (8) 4 1/2" squares.

From 3292-11 Scenic Ski Slope - Lt. Blue, cut:

* (3) 8 1/2" x WOF strips.

From 3294-67 Scarves & Mittens - Mint, cut:

* (7) 1 3/4" x WOF strips. Sub-cut (160) 1 3/4" squares.

* (5) 2 1/4" x WOF strips. Sub-cut (80) 2 1/4" squares.

From 3296-11 Snowflakes - Lt. Blue, cut:

* (3) 2 1/4" x WOF strips. Sub-cut (40) 2 1/4" squares.

* (3) 3" x WOF strips. Sub-cut (40) 3" squares.

* (3) 3 7/8" x WOF strips. Sub-cut (24) 3 7/8" squares.

* (7) 3 1/2" x WOF strips for border 2.

* (8) 2 1/2" x WOF strips for binding.

From 3955 Eclipse Solids - White, cut:

* (4) 1 1/2" x WOF strips. Sub-cut:

- (9) 1 1/2" x 4 1/2" rectangles

- Set aside 3 strips for sashing

* (5) 1 3/4" x WOF strips. Sub-cut (100) 1 3/4" squares.

* (4) 3" x WOF strips. Sub-cut:

- (80) 1" x 3" rectangles

- (40) 1 3/4" x 3" rectangles

* (8) 3 1/2" x WOF strips. Sub-cut:

- (40) 3 1/2" squares

- (80) 2 1/4" x 3 1/2" rectangles

* (3) 3 7/8" x WOF strips. Sub-cut (24) 3 7/8" squares.

* (1) 6 1/2" x WOF strip. Sub-cut:

- (16) 1 1/2" x 6 1/2" rectangles

- (7) 1 1/2" x 4 1/2" rectangles, for a total of 16

* (7) 1 1/2" x WOF strips for border 1.

Assemble Blocks

Notes: Measurements include 1/4" seam allowances. Sew with right sides together unless otherwise stated. If no direction is specified, press the seam toward the darker fabric.

1. Draw a diagonal line from corner to corner on the wrong side of the 3 7/8" 3955 Eclipse Solids - White squares. With right sides together, layer the marked White squares atop the 3 7/8" 3296-11 Snowflakes - Lt. Blue squares. Stitch 1/4" from each side of the diagonal line, cut on the drawn line, press each unit open with seams toward the darker fabric, and trim the dog ears. Make (48) 3 1/2" half-square triangles (HST). Sew the HST in pairs to form rows and press the seams in one direction. Sew two rows together to form a pinwheel block (figure 1). Press the seams open. Repeat to make (12) 6 1/2" pinwheel blocks.

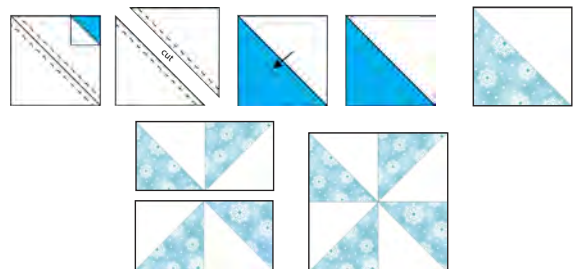


Figure 1 – Make (12) 6 1/2" pinwheel blocks.

2. Sew a 1 1/2" x 4 1/2" Eclipse – White rectangle to opposite sides of a 4 1/2" 3297-39 Ski Signs – Taupe square. Press the seams away from the center. Sew a 1 1/2" x 6 1/2" Eclipse – White rectangle to the top and bottom of the unit (figure 2). Press as before. Repeat to make (8) 6 1/2" blocks.



Figure 2 – Make (8) 6 1/2" blocks.

Blizzard of Fun Quilt

3. Repeat Step 1 with the 1 $\frac{3}{4}$ " Eclipse Solids - White and 1 $\frac{3}{4}$ " 3955 Eclipse Solids - Red squares to make (10) 3" pinwheel units (*figure 3*).



Figure 3 - Make (10) 3" pinwheel units.

4. Draw a diagonal line from corner to corner on the wrong side of the 1 $\frac{3}{4}$ " 3294-67 Scarves & Mittens - Mint squares. With right sides together, place one marked Mint square on a corner of one 3" Snowflakes - Lt. Blue square and stitch on the drawn line. Similarly, sew a 1 $\frac{3}{4}$ " Eclipse - White square to the opposite corner of the same square. Trim the seam allowances to $\frac{1}{4}$ " and press open. Repeat with the other corners of the square (*figure 4*). Make (40) 3" units.

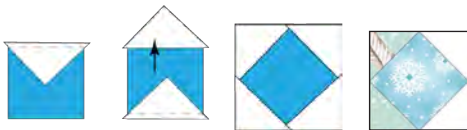


Figure 4 - Make (40) 3" units.

5. Draw a diagonal line from corner to corner on the wrong side of the remaining 1 $\frac{3}{4}$ " Scarves & Mittens - Mint squares. Noting the line orientation and with right sides together, layer a marked Mint square on the left short end of a 1 $\frac{3}{4}$ " x 3" Eclipse - White rectangle and stitch on the drawn line. Trim $\frac{1}{4}$ " away from the seam line and press open. Similarly, stitch another Mint square to the opposite end of the same rectangle (*figure 5*). Repeat to make (40) 1 $\frac{3}{4}$ " x 3" flying-geese units.



Figure 5 - Make (40) 1 $\frac{3}{4}$ " x 3" units.

6. Noting fabric orientation, sew a Step 5 unit to the Step 4 units and press the seams open. Sew a 1" x 3" Eclipse - White rectangle to each end. Press the seams away from the center. Repeat to make (40) 3" x 5 $\frac{1}{4}$ " units. Sew a unit to opposite sides of the Step 3 pinwheels to make (10) 3" x 12 $\frac{1}{2}$ " center rows (*figure 6*). Press the seams away from the center. Set aside the remaining units for Step 9.



Figure 6 - Make (10) 3" x 12 $\frac{1}{2}$ " rows.

7. Draw a diagonal line from corner to corner on the wrong side of the 2 $\frac{1}{4}$ " Scarves & Mittens - Mint squares. Noting the sewing line orientation and with right sides together, layer a marked Mint square on the right short end of a 2 $\frac{1}{4}$ " x 3 $\frac{1}{2}$ " Eclipse - White rectangle and stitch on the drawn line. Trim $\frac{1}{4}$ " away from the seam line and press open. Repeat to make 40 units.

Repeat this step with the remaining Mint squares and White rectangles, except sew the squares to the left side of the rectangles, as shown. Make 40 units (*figure 7*).



Figure 7 - Make 40 of each type.

8. Sew a Step 7 unit Y to a 3 $\frac{1}{2}$ " Eclipse - White square and press the seam toward the center. Repeat to make 40 units. Sew a 2 $\frac{1}{4}$ " Snowflakes - Lt. Blue square to the right side of a Step 7 unit X and press the seam away from the center. Make 40 units. Sew the units together as shown to make (40) 5 $\frac{1}{4}$ " corner units (*figure 8*). Press the seams in one direction.

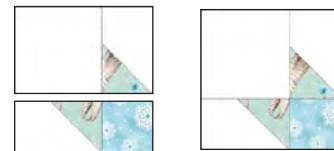


Figure 8 - Make (40) 5 $\frac{1}{4}$ " corner units.

9. Noting fabric orientation, sew a corner unit to opposite sides of the remaining Step 6 units to make 20 rows. Press the seams toward the center. Sew a row to the top and bottom of the Step 6 center rows and press the seams open (*figure 9*, next page). Make (10) 12 $\frac{1}{2}$ " blocks.

Blizzard of Fun Quilt

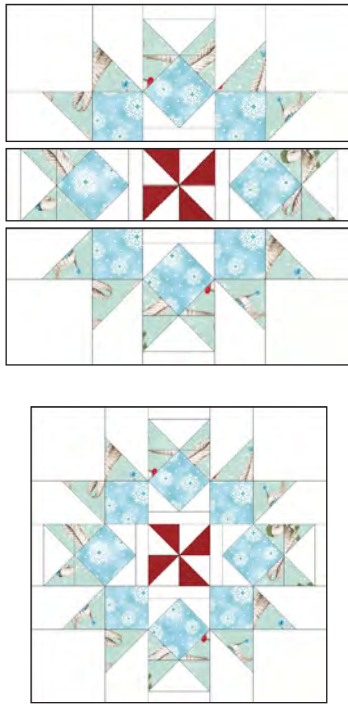


Figure 9 – Make (10) 12½" blocks.

Assemble Quilt Top

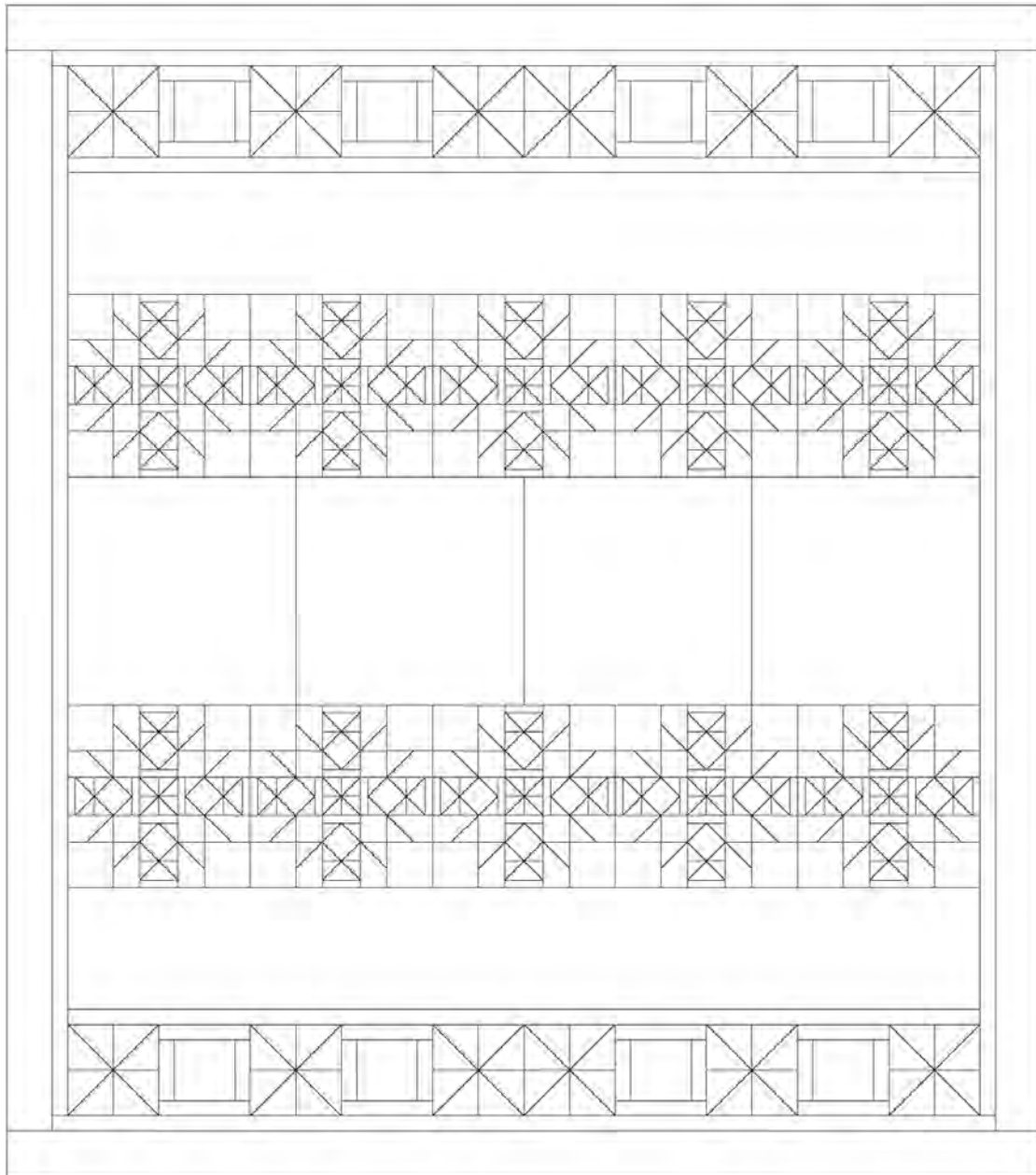
10. Gather the (12) pinwheel blocks and the (8) 6½" Ski Sign blocks. Referring to the quilt photo and diagram for block placement, sew two rows with 6 pinwheels and 4 Ski Sign blocks each. Press the seams in one direction. Set them aside for the moment.
11. Sew together the (3) 1½" Eclipse – White strips end to end using diagonal seams. Measure a Step 10 row and cut two sashing strips that length. Sew one sashing strip to the bottom of a Step 10 row and one to the top of the other row. Press the seams toward the sashing.
12. Sew together the (3) 8½" 3292-11 Scenic Ski Slope - Lt. Blue strips to make a long strip using straight seams. Measure a Step 11 unit and cut the long strip into 2 rectangles that length. Noting fabric orientation, sew one rectangle to the bottom of a Step 11 unit and one to the top of the second Step 11 unit. Press the seams toward the last additions. From here on, we will refer to these units as 'A unit' and 'B unit.'

13. Gather the 12½" blocks and sew them into 2 rows of 5 blocks each. Press the seams in one direction. Sew one block row to the bottom of the Step 12 A unit and one to the top of the Step 12 B unit. Press the seams away from the blocks.
14. Gather the (4) 15½" 3295-11 Ski Blocks - Lt. Blue panel squares. Sew them together to form a row and press the seams in one direction. Sew this row between the Step 13 A and B units to complete the quilt center. Press the seams away from the blocks.
15. For border 1, sew the (7) 1½" Eclipse - White border strips together end to end using diagonal seams. Measure the vertical length of the quilt top through the center and cut two border strips that length. Sew one strip to each side of the quilt top. Measure the width of the quilt top through the center. Cut two border strips that length and sew one to the top and one to the bottom. Press the seams toward the borders.
16. Repeat Step 15 with the (7) 3½" 3296-11 Snowflakes - Lt. Blue strips to make and add border 2.

Finishing

17. Create a sandwich with the batting between the quilt top and the backing. Pin or baste layers together, mark the quilting design, and quilt by hand or machine. When quilting is complete, remove pins or basting, and trim batting and backing even with the raw edges of the quilt top.
18. Join the (8) 2½" Snowflakes - Lt. Blue strips together end to end using a diagonal seam to make one long strip. Fold in half lengthwise with wrong sides together, and press. Sew binding to the edges of the quilt, mitering corners, and overlapping ends. Fold the binding to the back of the quilt and stitch it in place by hand to finish.

Blizzard of Fun Quilt



Quilt Diagram

©2023 Blank Quilting Corporation

Every effort has been made to ensure that all projects are error free. All the information is presented in good faith; however, no warranty can be given nor results guaranteed as we have no control over the execution of instructions. Therefore, we assume no responsibility for the use of this information or damages that may occur as a result. When errors are brought to our attention, we make every effort to correct and post a revision as soon as possible. Please make sure to check www.blankquilting.net for pattern updates prior to starting the project. We also recommend that you test the project prior to cutting for kits. Finally, all free projects are intended to remain free to you and are not for resale.