

Spooky Vibe

by Erin Wilde



Quilt design by Denise Russell.

Quilt size: 43" x 63"

Skill Level: Advanced Beginner

Blank Quilting Corporation
49 West 37th Street ♦ New York, NY 10018
Tel: 800-294-9495 ♦ Fax: 212-679-4578
www.blankquilting.net

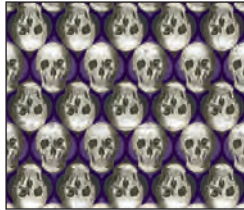
facebook

Free Project
NOT FOR RESALE

Spooky Vibe - Fabrics in the Collection



2720-55 Potion Labels
Purple



2721-55 Skulls
Purple



2722-90 Spiders and Webs - Lt. Gray



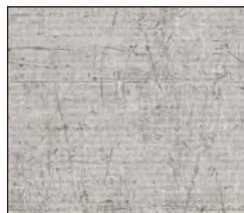
2723-90 Crows in Bell Jars - Lt. Gray



2724-99 Halloween Motifs - Charcoal



2725-33 Potion Bottles - Orange



2726-90 Distressed Typewritten Paper
Lt. Gray



2727-99 Chandeliers with Cobwebs
Charcoal



2730P-55 Halloween Panel 24"
Purple



2729P-99 Halloween Block Panel 36"
Charcoal



2728-99 Halloween Border Stripe
Charcoal

Selected fabrics from the
Jot Dot Collection



9570-09
Marshmallow



9570-45
Gold



9570-99
Black

Selected fabric from the
Urban Legend Collection by Tana Muller



7101-55
Dk. Purple

Spooky Vibe - Quilt 1

Page 1

Materials

Yardages and cutting instructions are based on 42" of usable fabric width.

One 2730P-55 Halloween Panel - 24" - Purple
1/8 yard 7101-55 Urban Legend - Dk. Purple
1/4 yard 9570-45 Jot Dot - Gold
1/4 yard 2720-55 Potion Labels - Purple
1/4 yard 2721-55 Skulls - Purple
1/4 yard 2722-90 Spiders and Webs - Lt. Gray
1/3 yard 2723-90 Crows in Bell Jars - Lt. Gray
1/2 yard 9570-09 Jot Dot - Marshmallow
1/2 yard 2726-90 Distressed Typewritten Paper - Lt. Gray
2/3 yard 2727-99 Chandeliers with Cobwebs - Charcoal
3/4 yard 9570-99 Jot Dot - Black
3 yards 2724-99 Halloween Motifs - Charcoal for backing
51" x 71" piece of Air Lite® Colour Me 100% Cotton batting

Cut Fabrics

Note: All strips are cut across the width of the fabric (WOF) from selvage to selvage unless otherwise indicated.

From 2730P-55 Halloween Panel - 24" - Purple:

*Trim to 22-1/2" x 42-1/2".

From 7101-55 Urban Legend - Dk. Purple, cut:

*Three 1-1/8" x WOF strips. Sub-cut eight of each: 1-1/8" x 4-1/4" and 1-1/8" x 5-1/2" strips.

From 9570-45 Jot Dot - Gold, cut:

*Four 1" x WOF strips for border 1.

From 2720-55 Potion Labels - Purple, cut:

*One 6-1/4" x WOF strip. Sub-cut four 6-1/4" squares; cut twice diagonally. (A)

From 2722-90 Spiders and Webs - Lt. Gray, cut:

*One 6-1/4" x WOF strip. Sub-cut four 6-1/4" squares; cut twice diagonally. (B)

From 2721-55 Skulls - Purple, cut:

*One 4-1/4" x WOF strip. Sub-cut four 4-1/4" squares.

From 2723-90 Crows in Bell Jars - Lt. Gray, cut:

*Two 4-1/4" x WOF strips. Sub-cut twelve 4-1/4" squares.

From 9570-09 Jot Dot - Marshmallow, cut:

*Two 6-1/4" x WOF strips. Sub-cut eight 6-1/4" squares; cut twice diagonally. (C)

From 2726-90 Distressed Typewritten Paper - Lt. Gray, cut:

*Nine 1-1/2" x WOF strips for borders 2 and 4.

From 2727-99 Chandeliers with Cobwebs - Charcoal, cut:

*Six 3-1/2" x WOF strips for border 5.

From 9570-99 Jot Dot - Black, cut:

*One 4-1/4" x WOF strip. Sub-cut twenty-four 1-1/8" x 4-1/4" strips.

*One 5-1/2" x WOF strip. Sub-cut twenty-four 1-1/8" x 5-1/2" strips.

*Six 2-1/2" x WOF strips for binding.

From 2724-99 Halloween Motifs - Charcoal, cut:

*Two 51" x WOF panels, pieced horizontally.

Assemble Blocks

Notes: Measurements include 1/4" seam allowances. Sew with right sides together unless otherwise stated. If no direction is specified, press the seam toward the darker fabric.

1. Sew a 9570-09 Jot Dot - Marshmallow C triangle to a 2722-90 Spiders and Webs - Lt. Gray B triangle. Press the seam toward the darker fabric. Sew another Marshmallow C triangle to a 2720-55 Potion Labels - Purple A triangle. Press as before. Sew the two units together to make a 5-1/2" block (*figure 1*). Press the seam open. Repeat to make sixteen blocks.

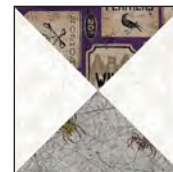


Figure 1 - Make (16) 5-1/2" blocks.

Spooky Vibe - Quilt 1

2. Sew a 1-1/8" x 4-1/4" 9570-99 Jot Dot – Black strip to opposite sides of a 4-1/4" 2723-90 Crows in Bell Jars - Lt. Gray square. Press the seams away from the center. Sew a 1-1/8" x 5-1/2" Black strip to the top and one to the bottom (*figure 2*). Press as before. Repeat to make twelve 5-1/2" blocks.



Figure 2 – Make (12) 5-1/2" blocks.

3. Repeat Step 2 with the 1-1/8" x 4-1/4" and 1-1/8" x 5-1/2" 7101-55 Urban Legend – Dk. Purple strips and the 4-1/4" 2721-55 Skulls – Purple squares to make four 5-1/2" blocks (*figure 3*).



Figure 3 – Make (4) 5-1/2" blocks.

Assemble Quilt Top

4. For border 1, trim two 1" 9570-45 Jot Dot – Gold strips to 42-1/2" and sew one strip to each side of the 2730P-55 Halloween - 24" – Purple panel. Press the seams toward the border. Trim two more Gold strips to 23-1/2" and sew one to the top and one to the bottom of the panel. Press as before.
5. Repeat Step 4 with two 1-1/2" 2726-90 Distressed Typewritten Paper - Lt. Gray strips trimmed to 43-1/2", and two more 1-1/2" Lt. Gray strips trimmed to 25-1/2". The quilt measures 25-1/2" x 45-1/2" up to here.
6. For border 3 and referring to the quilt photo for block placement and orientation, arrange nine blocks for each side of the quilt. Sew blocks together and sew one border strip to

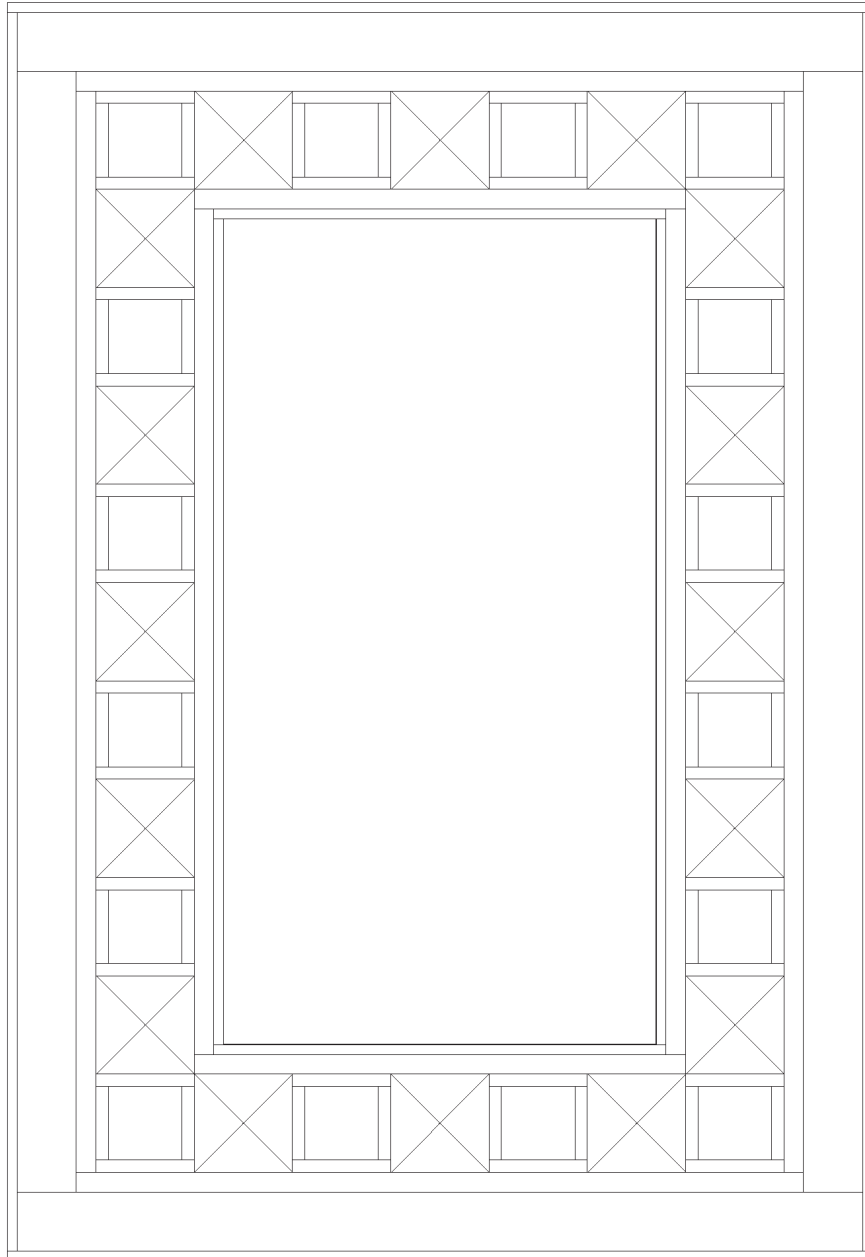
each side of the quilt center. Press the seam toward quilt center.

7. Repeat Step 6 with the four Step 3 blocks and the remaining blocks (five for each strip), and sew one border strip to the top and one to the bottom of the quilt center.
8. For border 4, sew five 1-1/2" 2726-90 Distressed Typewritten Paper - Lt. Gray border strips together end to end using diagonal seams. Measure the vertical length of the quilt top through the center and cut two border strips that length. Sew one strip to each side of the quilt top. Measure the width of the quilt top through the center. Cut two border strips that length and sew one to the top and one to the bottom. Press the seams toward the borders.
9. Repeat Step 8 with six 3-1/2" 2727-99 Chandeliers with Cobwebs – Charcoal strips to make and add border 5.

Finishing

10. Create a quilt sandwich with the batting between the quilt top and the backing. Pin or baste layers together, mark the quilting design, and quilt by hand or machine. When quilting is complete, remove pins or basting, and trim batting and backing even with raw edges of the quilt top.
11. Join the six 2-1/2" 9570-99 Jot Dot – Black binding strips together end to end using a diagonal seam to make one long strip. With wrong sides together, fold in half lengthwise and press. Sew binding to the edges of the quilt, mitering corners, and overlapping ends. Fold binding to the back of the quilt and stitch it in place by hand to finish.

Spooky Vibe - Quilt 1



Quilt Diagram

©2022 Blank Quilting Corporation

Every effort has been made to ensure that all projects are error free. All the information is presented in good faith; however, no warranty can be given nor results guaranteed as we have no control over the execution of instructions. Therefore, we assume no responsibility for the use of this information or damages that may occur as a result. When errors are brought to our attention, we make every effort to correct and post a revision as soon as possible. Please make sure to check www.blankquilting.net for pattern updates prior to starting the project. We also recommend that you test the project prior to cutting for kits. Finally, all free projects are intended to remain free to you and are not for resale.