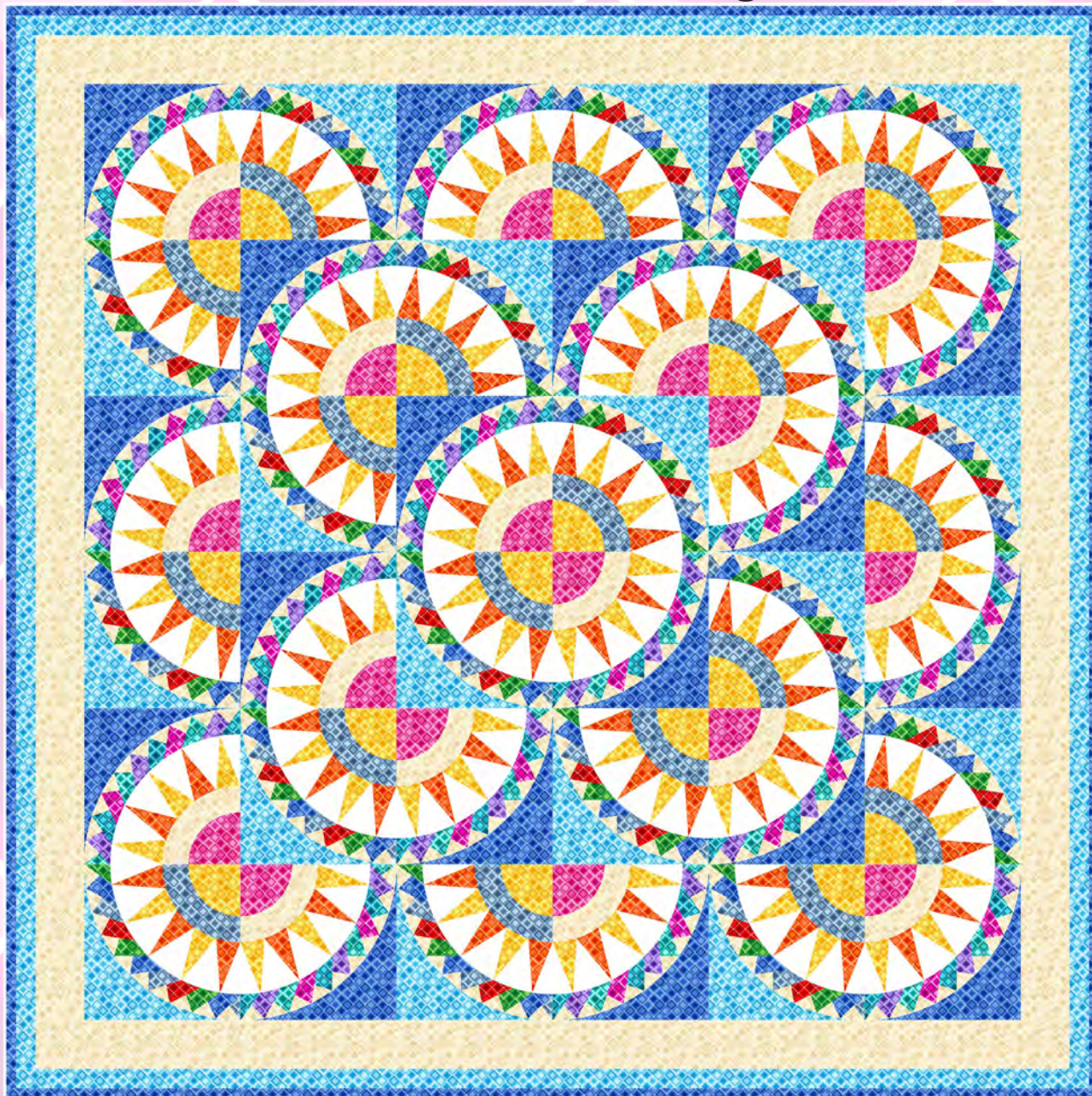




Quilt 1

# Square One

by Urban Essence Designs



Quilt design by Denise Russell.

Quilt size: 55" x 55"

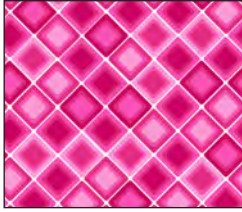
Skill Level: Advanced

**Blank Quilting Corporation**  
49 West 37th Street ♦ New York, NY 10018  
Tel: 800-294-9495 ♦ Fax: 212-679-4578  
[www.blankquilting.net](http://www.blankquilting.net)

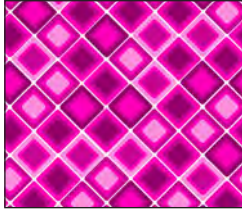
facebook

Free Project  
NOT FOR RESALE

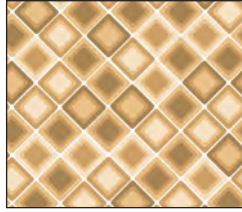
# Square One - Fabrics in the Collection



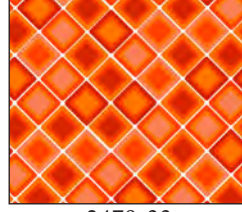
2478-22  
Fuchsia



2478-25  
Azalea



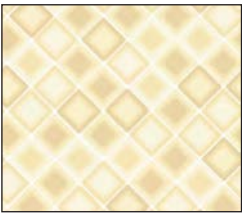
2478-30  
Tan



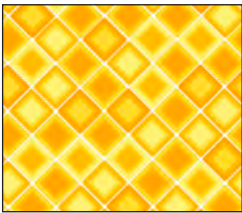
2478-33  
Orange



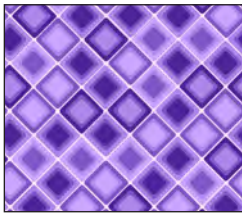
2478-39  
Cocoa



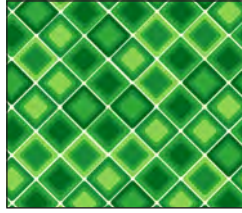
2478-41  
Ivory



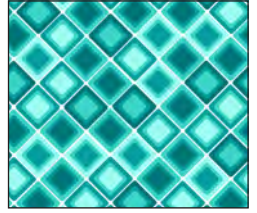
2478-44  
Daffodil



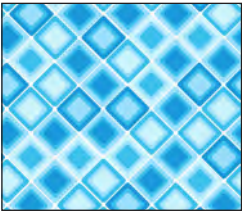
2478-55  
Iris



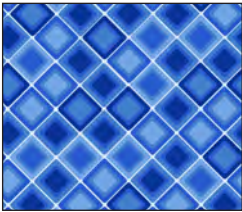
2478-66  
Kelly



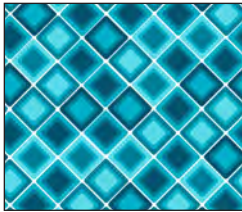
2478-67  
Aqua



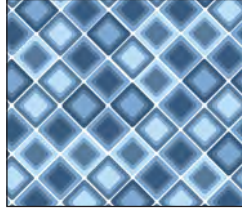
2478-70  
Sky



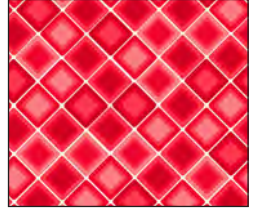
2478-72  
Royal



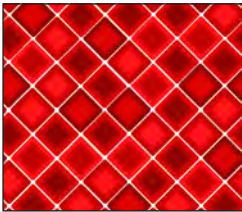
2478-74  
Turquoise



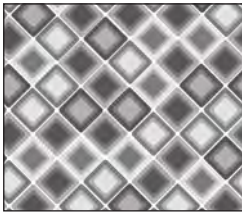
2478-76  
Denim



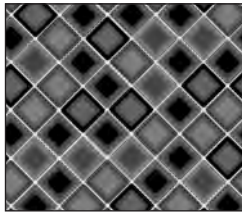
2478-85  
Flamingo



2478-88  
Cherry



2478-90  
Fog



2478-99  
Charcoal

Selected fabric from the  
Eclipse Collection



3955  
White

## Materials

*Yardages and cutting instructions are based on 42" of usable fabric width.*

1/4 yard 2478-25 Azalea  
1/4 yard 2478-88 Cherry  
1/3 yard 2478-22 Fuchsia  
1/3 yard 2478-55 Iris  
1/3 yard 2478-66 Kelly  
1/3 yard 2478-67 Aqua  
1/3 yard 2478-74 Turquoise  
1/2 yard 2478-33 Orange  
3/4 yard 2478-76 Denim  
3/4 yard 2478-44 Daffodil  
1-1/2 yards 3955 Eclipse - White  
1-5/8 yards 2478-70 Sky  
2 yards 2478-41 Ivory  
2-1/8 yards 2478-72 Royal  
3-1/2 yards 2478-30 Tan for backing  
63" x 63" piece of Air Lite® Colour Me 100% Cotton batting  
Plastic for templates  
Paper for foundation piecing

## Cut Fabrics

*Note: All strips are cut across the width of the fabric (WOF) from selvage to selvage unless otherwise indicated.*

### From each, cut:

**2478-25 Azalea** (Block 1, sections D7 and D15)

**2478-88 Cherry** (Block 2, sections D7 and D15)

\*Two 3-1/2" x WOF strips. Sub-cut thirty-six 2" x 3-1/2" strips.

### From 2478-22 Fuchsia, cut:

\*Cut eighteen centers with template A. (Block 1)

### From 2478-55 Iris, cut:

\*Three 3-1/2" x WOF strips. Sub-cut fifty-four 2" x 3-1/2" strips. (Block 1 - D3, D11, and D19)

### From each, cut:

**2478-66 Kelly** (Block 2 - D5, D13, and D21)

**2478-74 Turquoise** (Block 1 - D5, D13, and D21)

\*One 3-1/4" x WOF strip. Sub-cut eighteen

1-1/2" x 3-1/4" strips.

\*Two 3-1/2" x WOF strips. Sub-cut thirty-six 2" x 3-1/2" strips.

### From 2478-67 Aqua, cut:

\*One 2" x WOF strip. Sub-cut eighteen 2" squares. (Block 1 - D1)

\*Two 3-1/2" x WOF strips. Sub-cut thirty-six 2" x 3-1/2" strips. (Block 1 - D9 and D17)

### From 2478-33 Orange, cut:

\*Four 4" x WOF strips. Sub-cut ninety 1-3/4" x 4" strips. (Block 1 - C4 and C8; Block 2 - C2, C6, C10)

### From 2478-76 Denim, cut:

\*One 2" x WOF strip. Sub-cut eighteen 2" squares. (Block 2 - D1)

\*Two 3-1/2" x WOF strips. Sub-cut thirty-six 2" x 3-1/2" strips. (Block 2 - D9, and D17)

\*Eighteen arcs with template B. (Block 2)

### From 2478-44 Daffodil, cut:

\*Four 4" x WOF strips. Sub-cut ninety 1-3/4" x 4" strips. (Block 1 - C2, C6, C10; Block 2 - C4 and C8)

\*Cut eighteen centers with template A. (Block 2)

### From 3955 Eclipse - White, cut:

\*Twelve 4" x WOF strips. Sub-cut:

- (144) 2-1/2" x 4" strips. (Blocks 1 and 2 - C3, C5, C7, and C9)

- Seventy-two 1-3/4" x 4" strips. (Blocks 1 and 2 - C1 and C11)

### From 2478-70 Sky, cut:

\*Six 1-1/2" x WOF strips for border 2.

\*Eighteen background triangles with template E. (Block 2)

### From 2478-41 Ivory, cut:

\*Eighteen 2" x WOF strips. Sub-cut (360) 2" squares. (Blocks 1 and 2 - D, even numbers)

\*Five 3" x WOF strips for border 1.

\*Eighteen arcs with template B. (Block 1)

### From 2478-72 Royal, cut:

\*Three 3-1/2" x WOF strips. Sub-cut fifty-four

# Square One - Quilt 1

2" x 3-1/2" strips. (Block 2 - D3, D11, and D19)

\*Six 2-1/2" x WOF strips for binding.

\*Eighteen background triangles with template E. (Block 1)

## From 2478-30 Tan, cut:

\*Two 63" x WOF panels, pieced horizontally.

## Assemble Blocks

*Notes:*

- Measurements include 1/4" seam allowances. Sew with right sides together unless otherwise stated. If no direction is specified, press the seam toward the darker fabric.
- Group fabrics by block and section.
- Before paper-piecing sections C and D, reduce stitch length to 1.6 or 1.8 to facilitate paper removal later.

1. Print eighteen pairs of templates C and D. Paper-piece each section referring to Table 1 below for fabric placement. Note that you will place the fabrics on the backside of the templates and will stitch the seams on their printed side. Press open and trim but do not remove the paper yet. Noting fabric combinations, pin the D sections liberally to the C sections, placing a pin at the center, then at small intervals between the ends and the center and sew them together (*figure 1*, next page). Press seams open.

Block	Fabric	Template and Section
# 1	2478-22 Fuchsia	A
	2478-41 Ivory	B D2, D4, D6, D8, D10, D12, D14, D16, D18, and D20
	2478-44 Daffodil	C2, C6, C10
	2478-33 Orange	C4, C8
	3955 Eclipse - White	C1, C3, C5, C7, C9, and C11
	2478-67 Aqua	D1, D9, and D17
	2478-55 Iris	D3, D11, and D19
	2478-74 Turquoise	D5, D13, and D21
	2478-25 Azalea	D7 and D15
	2478-72 Royal	E
	# 2	2478-44 Daffodil
2478-33 Orange		C2, C6, C10
2478-76 Denim		B D1, D9, and D17
2478-66 Kelly		D5, D13, and D21
2478-72 Royal		D3, D11, and D19
2478-88 Cherry		D7 and D15
2478-70 Sky		E

Table 1 – Fabric placement for each block.

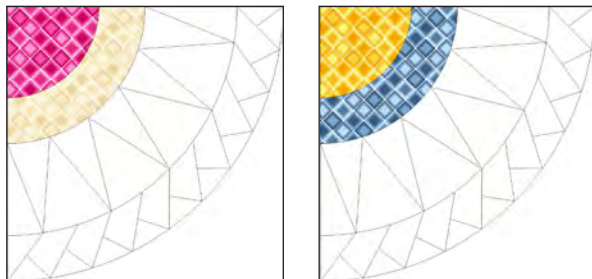


Block 1 units

Block 2 units

Figure 1 – Make 18 of each.

- Trace templates A, B, and E on the plastic for templates. Cut on the outline and trace each template eighteen times on the wrong side of the fabrics listed in Table 1. Cut on the outline using a ruler and rotary cutter. Noting fabric combinations, pin the A and B sections as in Step 1 and sew them together. Sew these units to the Step 1 units (*figure 2*). Press open. Save triangles E for Step 3.



Block 1 units



Block 2 units

Figure 2

- Sew the 2478-72 Royal background triangles E to the Block 1 units and the 2478-70 Sky triangles E to the Block 2 units to complete the thirty-six assorted 8-1/2" blocks (*figure 3*). Remove the backing paper and press open.

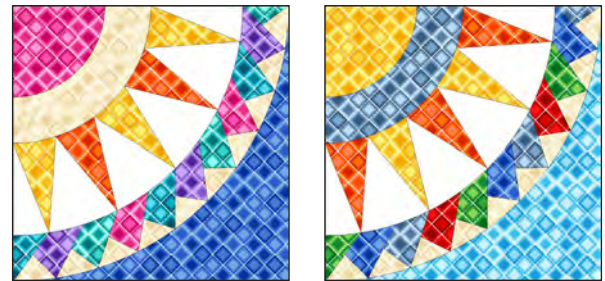


Figure 3 – Make (18) 8-1/2" blocks of each type.

## Assemble Quilt Top

- Following the quilt photo for block placement and orientation, lay out six rows of six blocks each. Sew the blocks together in each row, then matching adjacent seams, sew the rows together in order.
- For border 1, join the five 3" 2478-41 Ivory strips together end to end using diagonal seams. Measure the vertical length of the quilt top through the center and cut two border strips that length. Sew one strip to each side of the quilt top and press the seams toward the border strips. Measure the width of the quilt top through the center. Cut two border strips that length and sew one to the top and one to the bottom. Press the seams toward the borders.
- Repeat Step 5 with the six 1-1/2" 2478-70 Sky strips to make and add border 2.

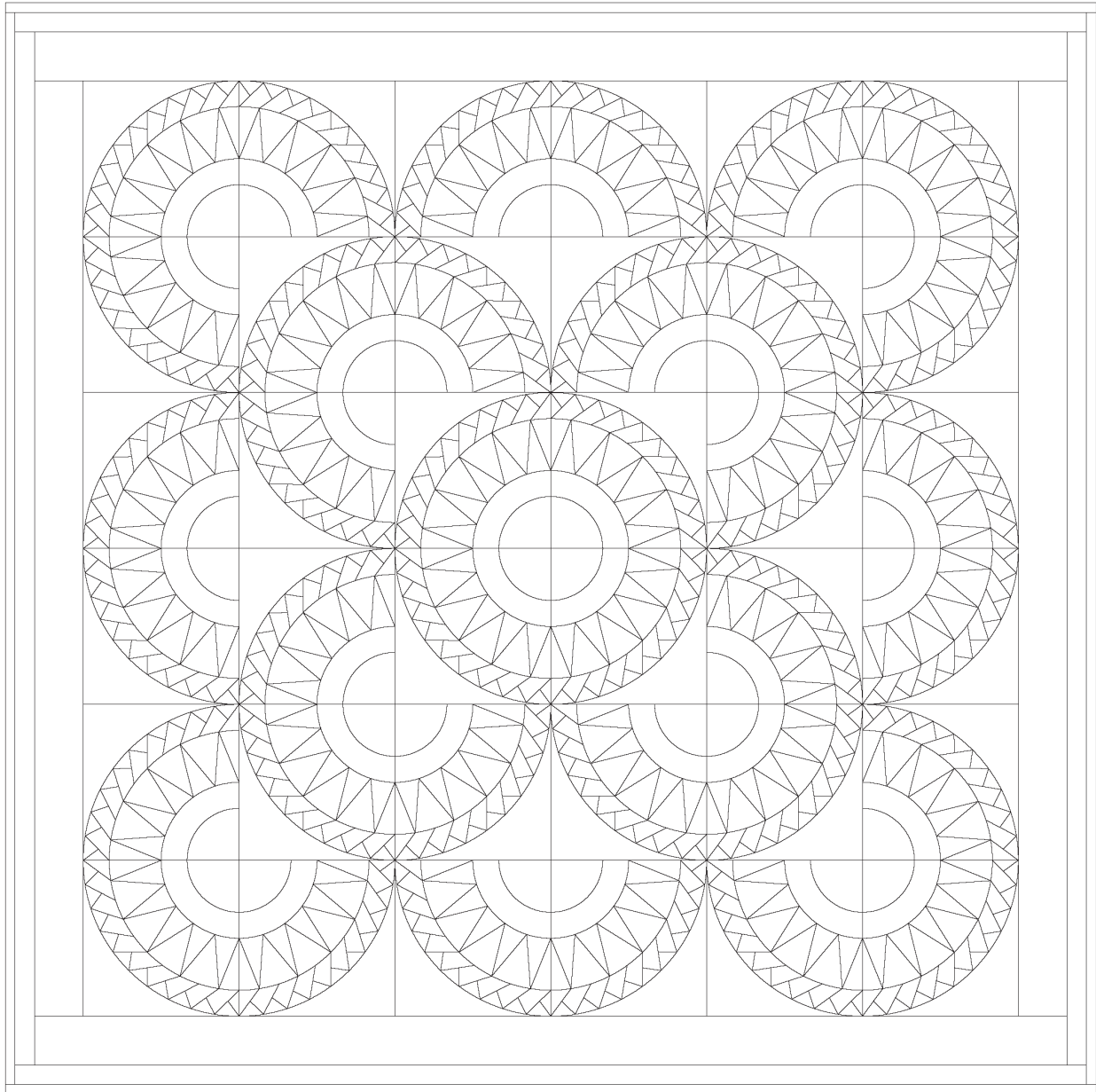
## Finishing

- Create a quilt sandwich with the batting between the quilt top and the backing. Pin or baste layers together, mark the quilting design, and quilt by hand or machine. When quilting is complete, remove pins or basting, and trim batting and backing even with raw edges of the quilt top.
- Join the six 2-1/2" 2478-72 Royal binding strips together end to end using a diagonal

# Square One - Quilt 1

Page 4

seam to make one long strip. With wrong sides together, fold in half lengthwise and press. Sew binding to the edges of the quilt, mitering corners, and overlapping ends. Fold binding to the back of the quilt and stitch it in place by hand to finish.



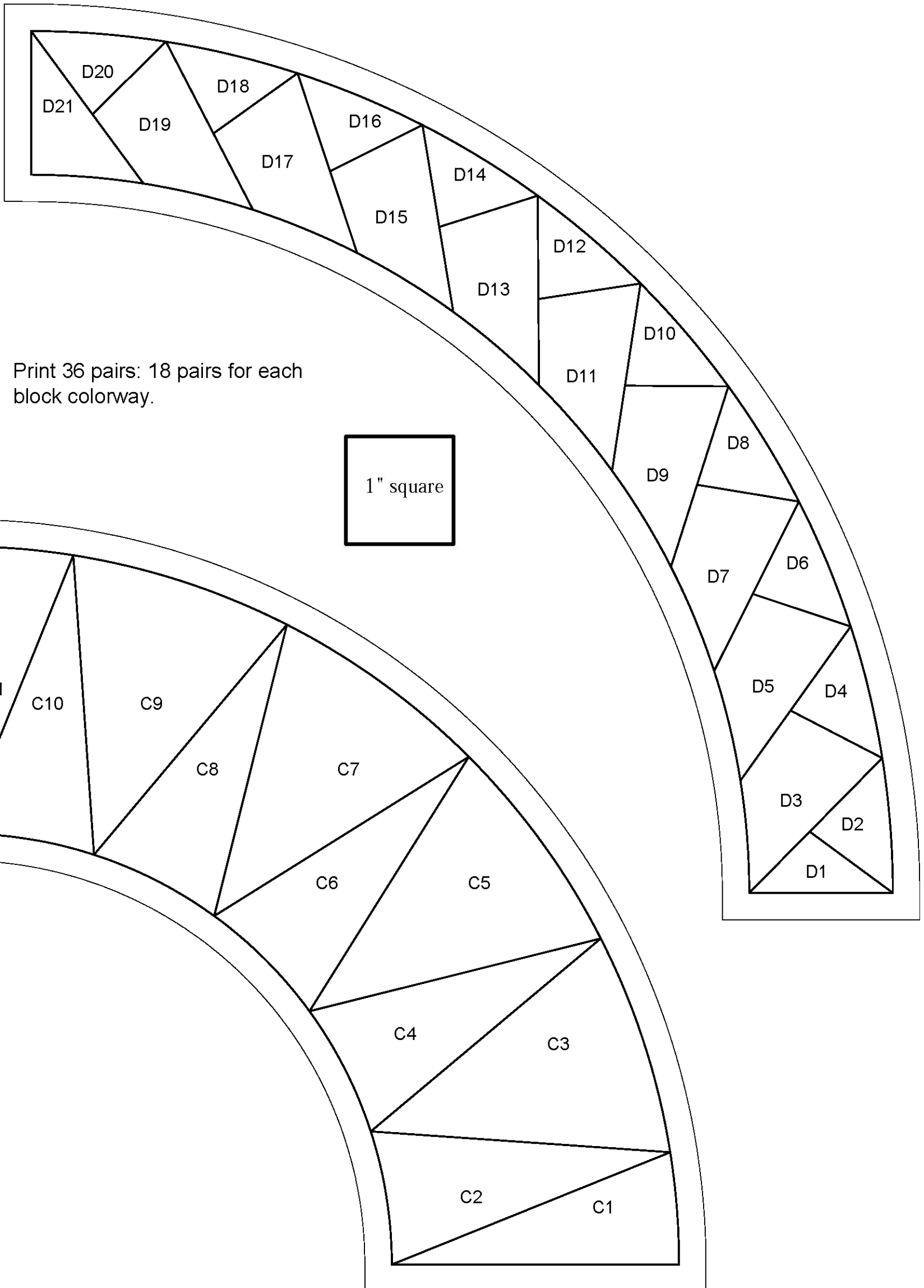
Quilt Diagram

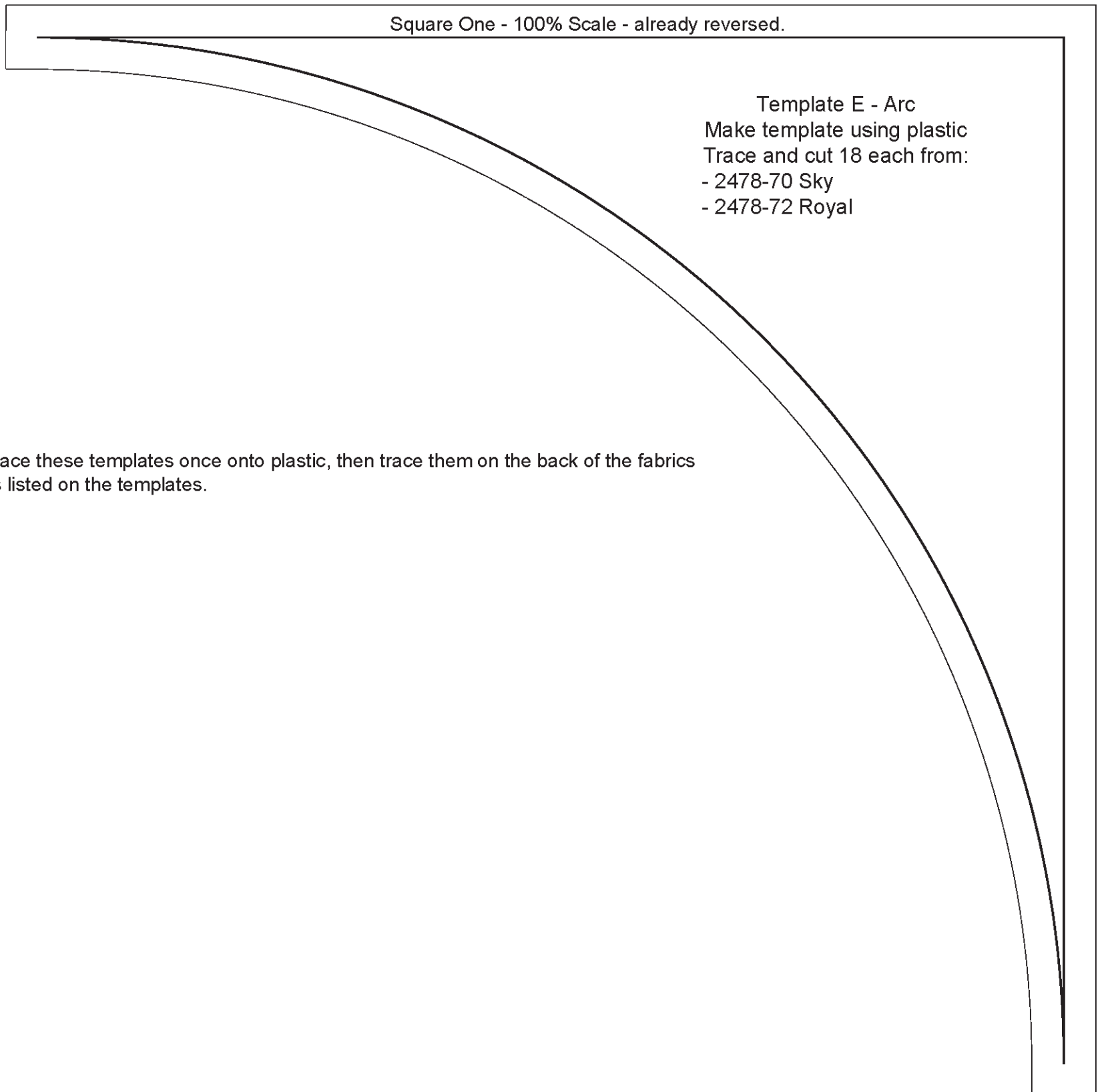
©2022 Blank Quilting Corporation

*Every effort has been made to ensure that all projects are error free. All the information is presented in good faith; however, no warranty can be given nor results guaranteed as we have no control over the execution of instructions. Therefore, we assume no responsibility for the use of this information or damages that may occur as a result. When errors are brought to our attention, we make every effort to correct and post a revision as soon as possible. Please make sure to check [www.blankquilting.net](http://www.blankquilting.net) for pattern updates prior to starting the project. We also recommend that you test the project prior to cutting for kits. Finally, all free projects are intended to remain free to you and are not for resale.*

**Square One**  
Quilt 1 Templates  
100% Scale, already reversed

**Print on 11" x 17" paper!**





Trace these templates once onto plastic, then trace them on the back of the fabrics as listed on the templates.

