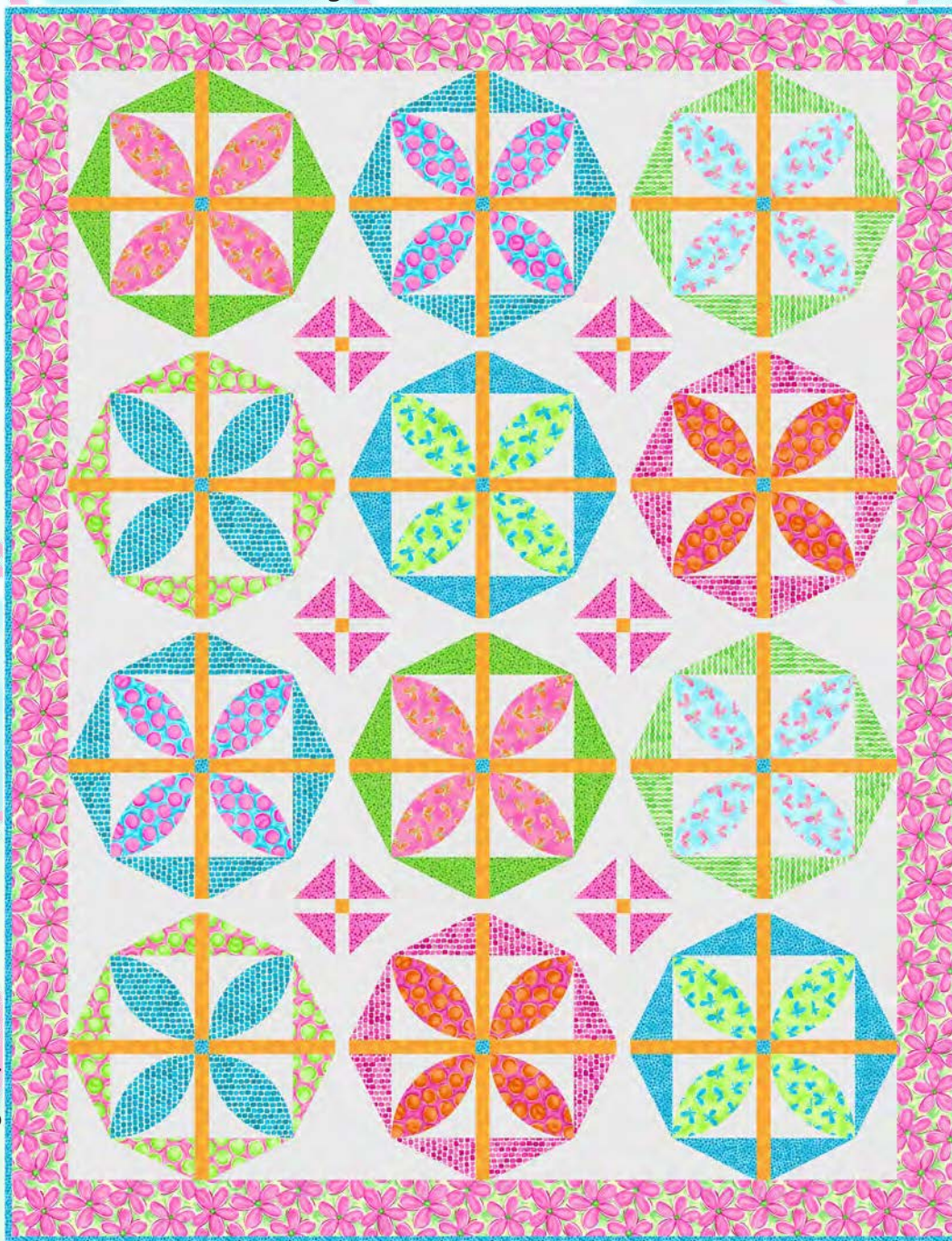


Whimsy Daisical

by Keri Schneider

Quilt design by Denise Russell.



Quilt size: 68" x 88."

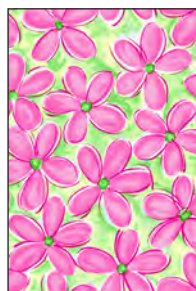
Skill Level: Confident Beginner.

Blank Quilting Corporation
49 West 37th Street ♦ New York, NY 10018
Tel: 800-294-9495 ♦ Fax: 212-679-4578
www.blankquilting.net

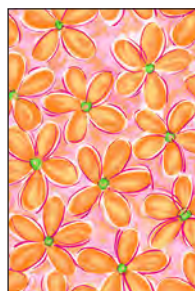
facebook

Free Project
NOT FOR RESALE

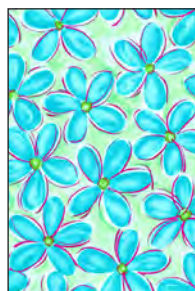
Whimsy Daistical - Fabrics in the Collection



1429-22 Large Daisy
Pink



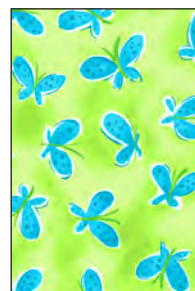
1429-33 Large Daisy
Orange



1429-70 Large Daisy
Blue



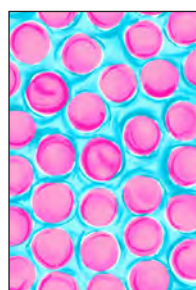
1430-22 Butterflies
Pink



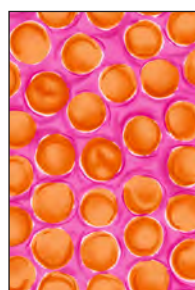
1430-60 Butterflies
Green



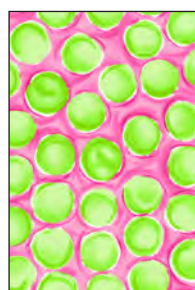
1430-70 Butterflies
Blue



1431-22 Large Dots
Pink



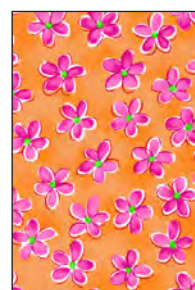
1431-33 Large Dots
Orange



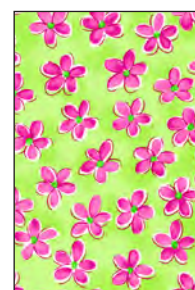
1431-60 Large Dots
Green



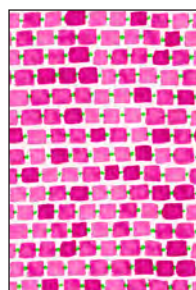
1432-22 Small Daisy
Pink



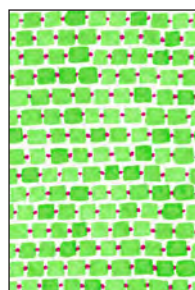
1432-33 Small Daisy
Orange



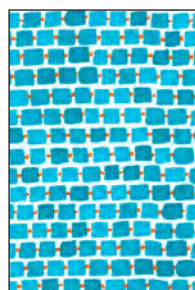
1432-60 Small Daisy
Green



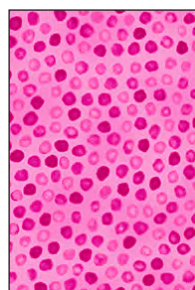
1433-22 Rectangles
Pink



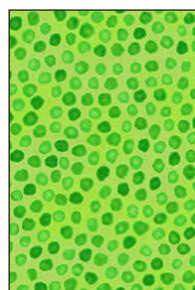
1433-60 Rectangles
Green



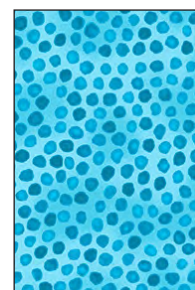
1433-70 Rectangles
Blue



1434-22 Small Dots
Pink



1434-60 Small Dots
Green

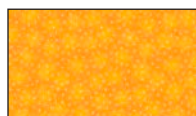


1434-70 Small Dots
Blue

Selected fabrics from the Starlet collection



6383 White



6383 Orange

Materials

Yardages and cutting instructions are based on 42" of usable fabric width

1/3 yard 1430-22 Butterflies – Pink
1/3 yard 1430-60 Butterflies – Green
1/3 yard 1430-70 Butterflies – Blue
1/3 yard 1431-22 Large Dots – Pink
1/3 yard 1431-33 Large Dots – Orange
1/3 yard 1434-22 Small Dots – Pink
1/2 yard 1431-60 Large Dots – Green
1/2 yard 1433-22 Rectangles – Pink
1/2 yard 1433-60 Rectangles – Green
1/2 yard 1434-60 Small Dots – Green
5/8 yard 6383 Starlet - Orange
3/4 yard 1433-70 Rectangles - Blue
1 yard 1429-22 Large Daisy - Pink
1-1/8 yards 1434-70 Small Dots - Blue
4-3/4 yards 6383 Starlet - White
5-1/2 yards 1430-70 Butterflies – Blue for backing
76" x 96" piece of Air Lite® Colour Me 100% Cotton batting
Fusible web
Foundation paper
Monofilament thread

Cut Fabrics

Note: All strips are cut across the width of the fabric (WOF) from selvage to selvage unless otherwise indicated.

From each:

1430-22 Butterflies – Pink

1430-60 Butterflies – Green

1430-70 Butterflies – Blue

1431-22 Large Dots – Pink

1431-33 Large Dots – Orange

*Cut eight orange peels using the template.

From 1434-22 Small Dots – Pink:

*Cut two 3-7/8" x WOF strips. Sub cut twelve 3-7/8" squares.

From each:

1431-60 Large Dots – Green

1433-22 Rectangles – Pink

1433-60 Rectangles – Green

1434-60 Small Dots – Green

*Cut two 8" x WOF strips. Sub cut sixteen 4" x 8" rectangles (A1, B1).

From 6383 Starlet – Orange:

*Cut two 9-1/2" x WOF strips. Sub cut:
- Forty-eight 1-1/2" x 9-1/2" sashing strips, and
- Six 1-1/2" cornerstone squares.

From 1433-70 Rectangles – Blue:

*Cut two 8" x WOF strips. Sub cut sixteen 4" x 8" rectangles (A1, B1).

*Cut eight orange peels using the template.

From 1429-22 Large Daisy – Pink:

*Cut seven 4-1/2" x WOF strips for the border.

From 1434-70 Small Dots – Blue:

*Cut two 8" x WOF strips. Sub cut:
- Sixteen 4" x 8" rectangles (A1, B1), and
- Twelve 1-1/2" cornerstone squares.
*Cut eight 2-1/2" x WOF strips for binding.

From 6383 Starlet – White:

*Cut two 3-1/2" x WOF strips. Sub cut twenty-four 3-1/2" squares.
*Cut two 3-7/8" x WOF strips. Sub cut twelve 3-7/8" squares.
*Cut eight 6-1/2" x WOF strips. Sub cut forty-eight 6-1/2" squares.
*Cut ten 8" x WOF strips. Sub cut ninety-six 4" x 8" rectangles (A2, B2).
*Cut one 19-1/2" x WOF strip. Sub cut seventeen 1-1/2" x 19-1/2" sashing strips.

Assemble Blocks

Measurements include 1/4" seam allowances. Sew with right sides together unless otherwise stated. If no direction is specified, press seam toward the darker fabric.

1. Trace or print forty-eight copies each of the templates A and B. Paper piece each section referring to Table 1 on next page for fabric placement, noting that

Whimsy Daisical - Quilt 1

Page 2

fabrics are placed on the backside of the templates and seams are stitched on the printed side of the templates (*figure 1*). Press open, trim, and remove paper.

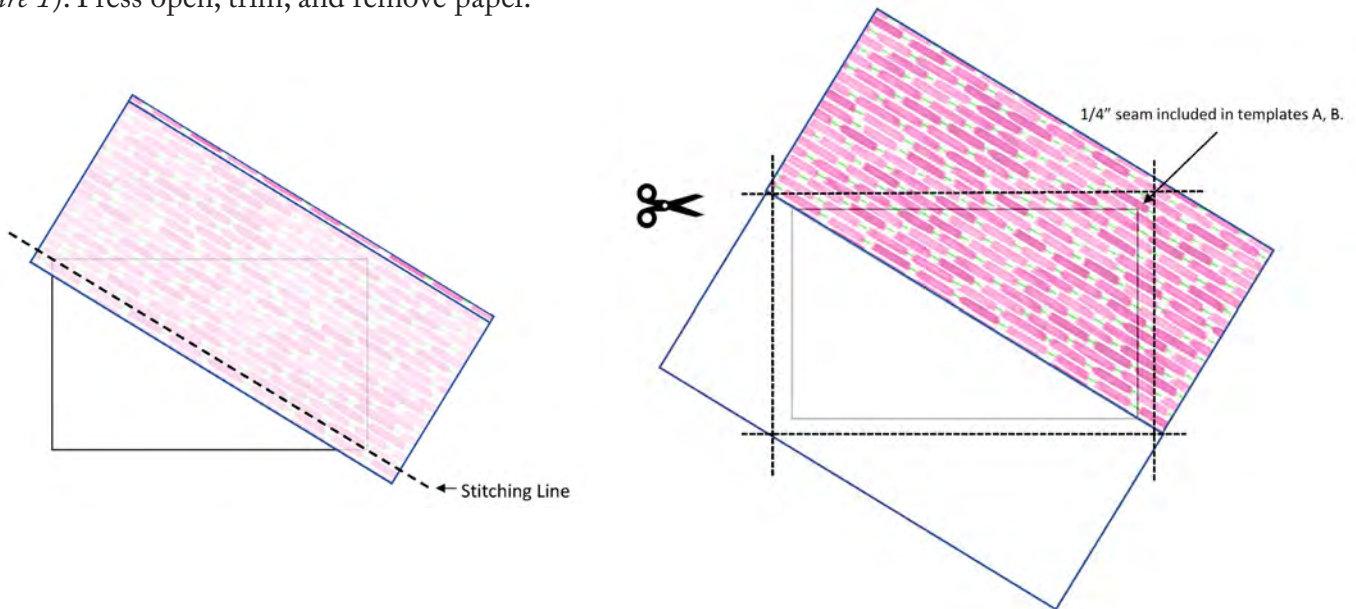


Figure 1 - Fabric placement, stitching, and trimming of paper pieced units. Trimmed units measure 3-1/2" x 6-1/2".





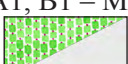
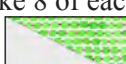






Section	# of Rectangles and Fabric
A2, B2 – All Units	(96) 4" x 8" rectangles Starlet 6383 White
A1, B1 – Make 8 of each  	(16) 4" x 8" rectangles 1434-60 Small Dots – Green
A1, B1 – Make 8 of each  	(16) 4" x 8" rectangles 1433-70 Rectangles – Blue
A1, B1 – Make 8 of each  	(16) 4" x 8" rectangles 1433-60 Rectangles – Green
A1, B1 – Make 8 of each  	(16) 4" x 8" rectangles 1431-60 Large Dots – Green
A1, B1 – Make 8 of each  	(16) 4" x 8" rectangles 1434-70 Small Dots – Blue
A1, B1 – Make 8 of each  	(16) 4" x 8" rectangles 1433-22 Rectangles – Pink

Table 1. Fabric placement on foundation pieced blocks.

Note: For directional fabrics, fabric direction on patches may differ from the illustrations above.

2. Draw a diagonal line on the wrong side of the 3-7/8" Starlet 6383 White squares. With right sides together, layer the marked White squares atop the 3-7/8" 1434-22 Small Dots – Pink squares. Stitch 1/4" on each side of

the marked line, cut on the drawn line, press each unit open with seams toward dark fabric, and trim dog ears (*figure 2*). Make a total of twenty-four 3-1/2" half-square triangles (HST).

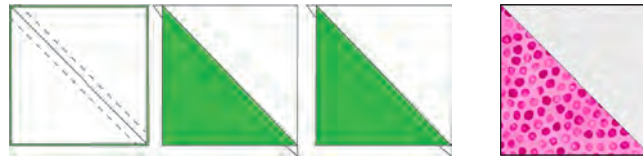


Figure 2 – Make 24 3-1/2" HST.

3. Place the orange peel shape onto a lightbox or windowpane. Layer the fusible web onto it and trace it forty-eight times. Cut each shape 1/8" outside the outline and fuse to the wrong side of fabrics, as shown in Table 2 below. Cut on the outline and remove the paper backing.

4. Fold and crease the 6-1/2" Starlet 6383 White squares in half diagonally once. Center appliqué shapes diagonally on squares using the creased fold as a guideline, making sure to leave 1/4" between the orange peel points and the square corners to prevent the seam from hiding it. Fuse them according to the manufacturer's instructions. Machine appliqué using the monofilament thread and a small zigzag stitch. Make forty-eight 6-1/2" blocks of assorted colors (eight of each fabric).

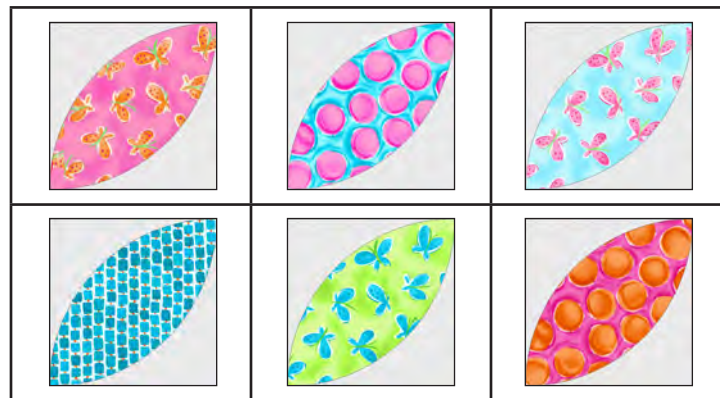


Table 2. Make eight units with each fabric.

5. Noting fabric orientation, and using the paper pieced units from Step 1, the HST from Step 2, the 3-1/2" Starlet 6383 White squares, and the units from Step 4, assemble the 9-1/2" blocks of each fabric colorway, as shown on *figure 3* below and in Table 3 on the next page. Press the seams open.

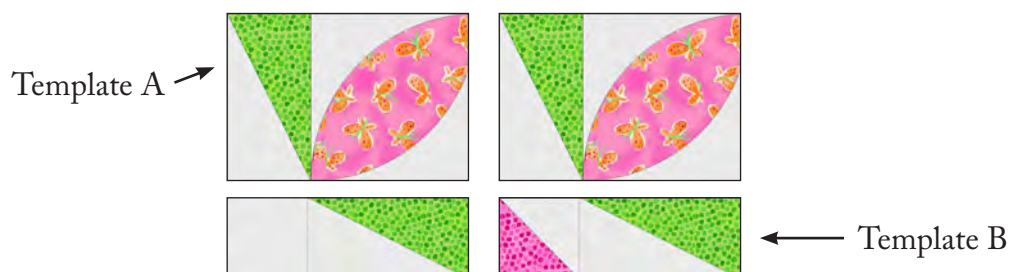


Figure 3 – Block Assembly.



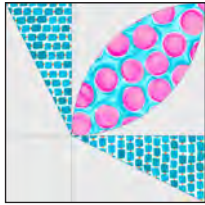







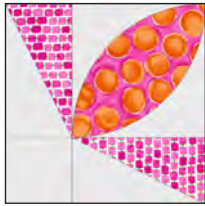
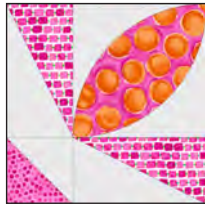
					
Make 3	Make 5	Make 4	Make 4	Make 5	Make 3
					
Make 5	Make 3	Make 3	Make 5	Make 4	Make 4

Table 3. All blocks for the quilt.

Assemble Quilt Top

6. Referring to the quilt photo for block placement and color orientation, lay out the units to form the flowers: four matching orange peel blocks, four 1-1/2" x 9-1/2" 6383 Starlet – Orange sashing strips, and one 1-1/2" 1434-70 Small Dots – Blue cornerstone. You will have three assorted flowers in each of the four rows. Add two 1-1/2" x 19-1/2" Starlet 6383 White sashing strips after each flower. Join the flowers first then add the sashing strips in each row. Press the seams toward the White sashing.

7. To make the White horizontal sashing rows, sew together three 1-1/2" x 19-1/2" Starlet 6383 White sashing strips and two 1-1/2" 6383 Starlet Orange cornerstones. Repeat to make three White sashing strips. Press the seams away from the cornerstones.

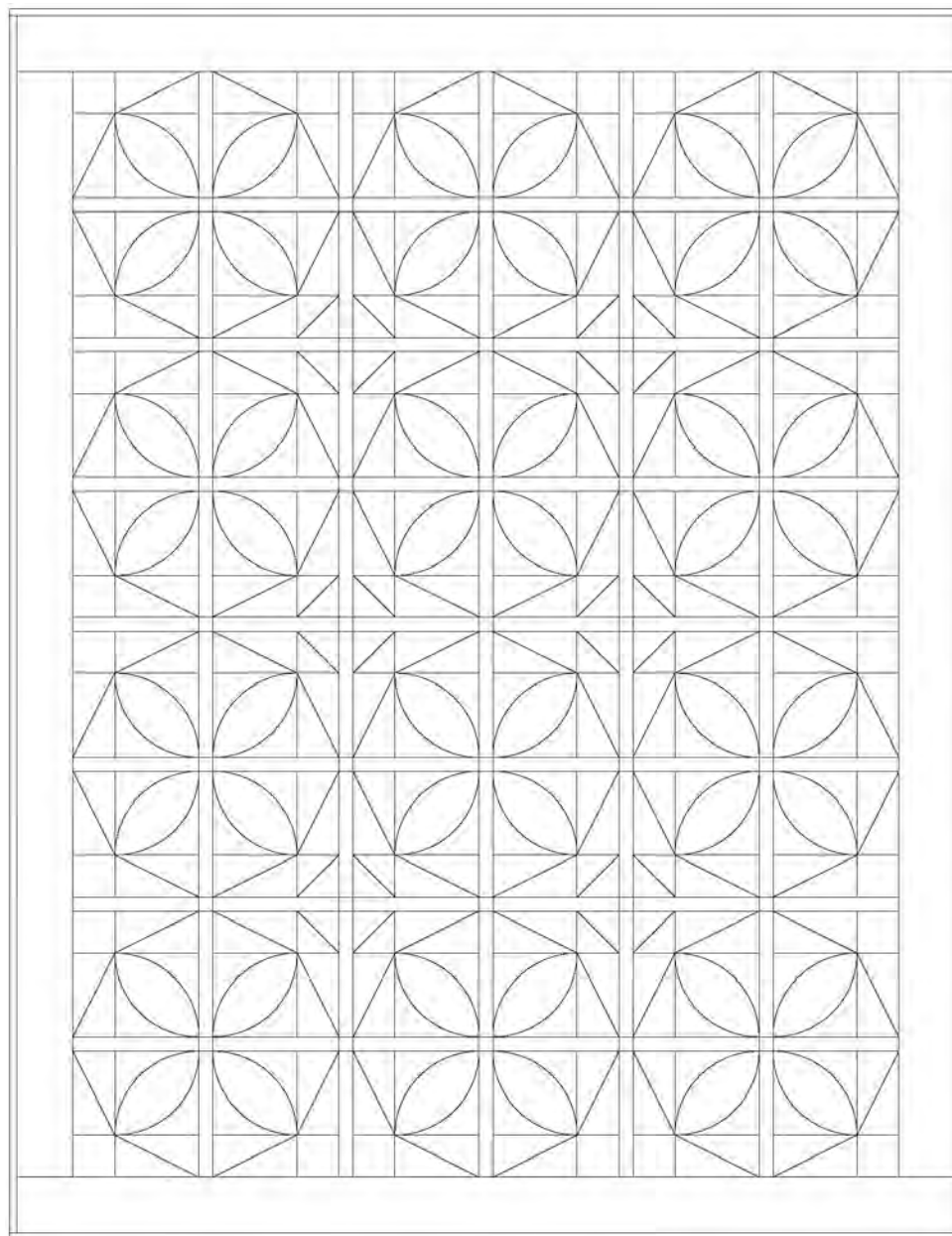
8. Matching adjacent seams, sew flower rows and the horizontal sashing strips together. Press the seams in one direction.

9. For the border, join the seven 4-1/2" 1429-22 Large Daisy – Pink border strips together end to end using diagonal seams. Measure the vertical length of the quilt top through the center and cut two border strips that length. Sew one strip to each side of the quilt top. Measure the width of the quilt top through the center. Cut two border strips that length and sew one to the top and one to the bottom. Press the seams toward the borders.

Finishing

10. Create a quilt sandwich with the batting between the quilt top and the backing. Pin or baste layers together, mark quilting design, and quilt by hand or machine. When quilting is complete, remove pins or basting, and trim batting and backing even with raw edges of the quilt top.

11. Join the eight 2-1/2" 1434-70 Small Dots – Blue binding strips together end to end using a diagonal seam to make one long strip. Fold in half lengthwise and press. Sew binding to the edges of the quilt, mitering corners, and overlapping ends. Fold binding to the back of the quilt and stitch it in place by hand to finish.

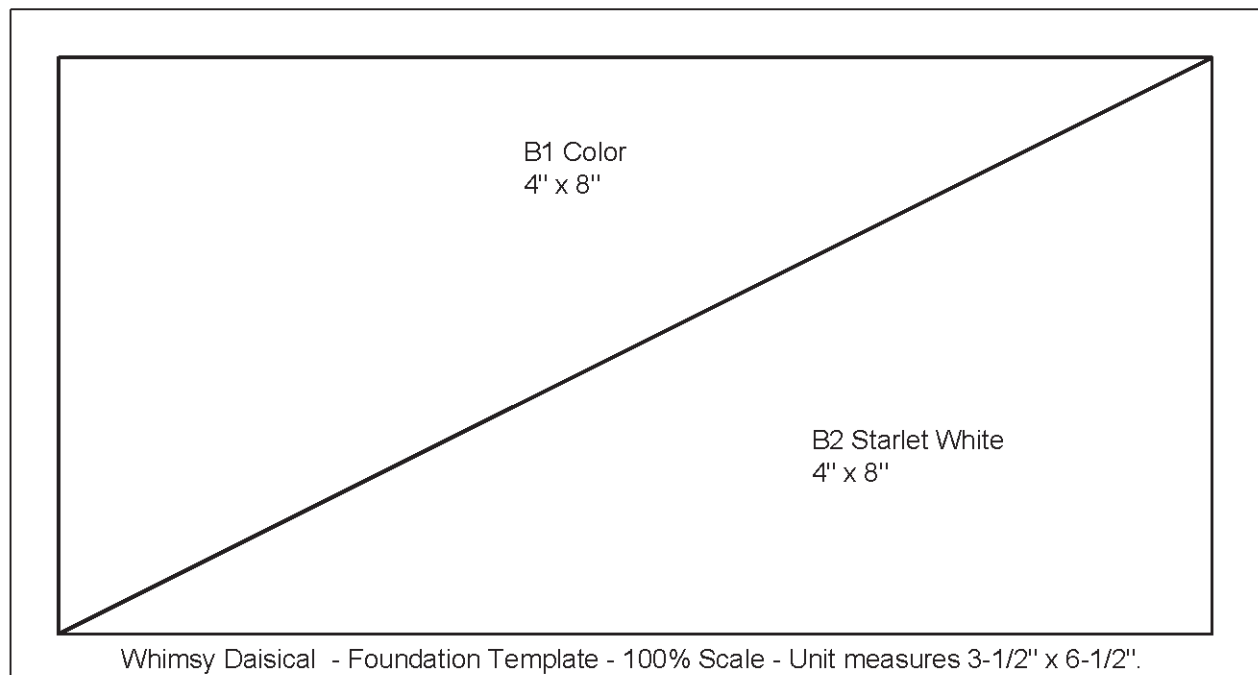
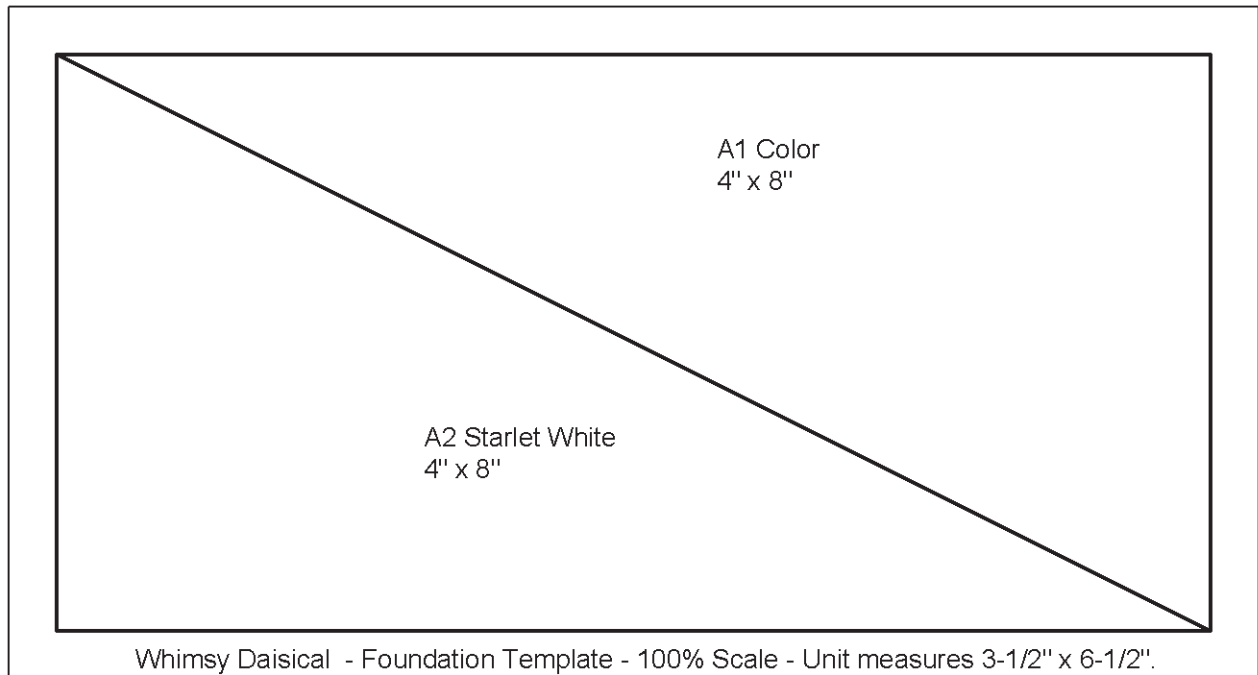


Quilt Diagram

©2020 Blank Quilting Corporation

Every effort has been made to ensure that all projects are error free. All the information is presented in good faith; however, no warranty can be given nor results guaranteed as we have no control over the execution of instructions. Therefore, we assume no responsibility for the use of this information or damages that may occur as a result. When errors are brought to our attention, we make every effort to correct and post a revision as soon as possible. Please make sure to check www.blankquilting.net for pattern updates prior to starting the project. We also recommend that you test the project prior to cutting for kits. Finally, all free projects are intended to remain free to you and are not for resale.

Templates



1" square

Whimsy Daisical

Orange Peel template.
Trace 48 times on the
back of the fusible web.

