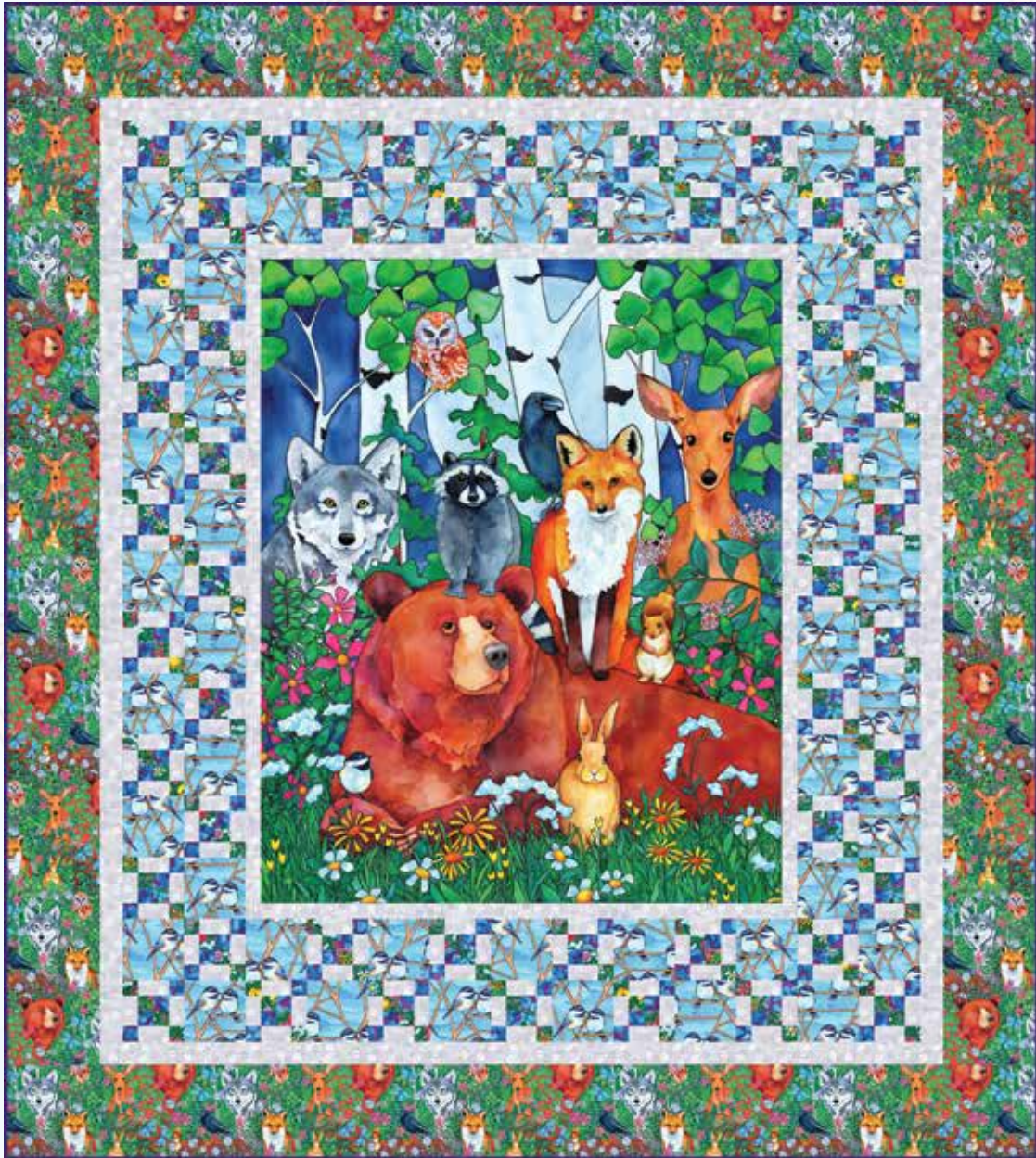


# Woodland Fantasy

••••• A Free Project Sheet •••••  
••••• NOT FOR RESALE •••••

By Karen Savory

Quilt 1



Quilt Design by Heidi Pridemore

Skill Level: Advanced Beginner

facebook



Finished Quilt Size: 67" x 75"  
49 West 37th Street, 14th floor, New York, NY 10018  
Toll Free: 800-294-9495  
fax: 212-679-4578  
www.blankquilting.net  
Please check our website for pattern updates before starting this project.



# WOODLAND FANTASY Quilt 1

## Fabrics in the Woodland Fantasy Collection



Animal Blocks - Dark Blue  
1305-77



Animals with Leaves - Green  
1306-66



Allover Floral - Green  
1307-66



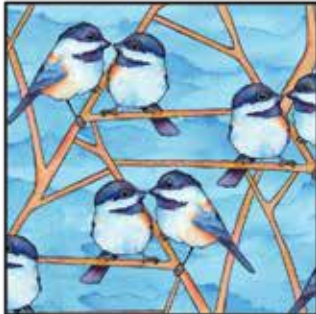
Bears in Trees - Dark Blue  
1308-77



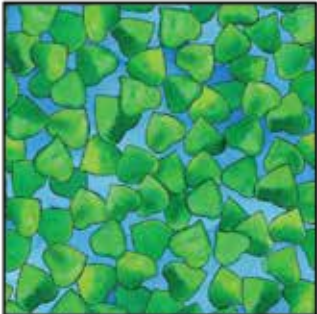
Wolves - Gray  
1309-90



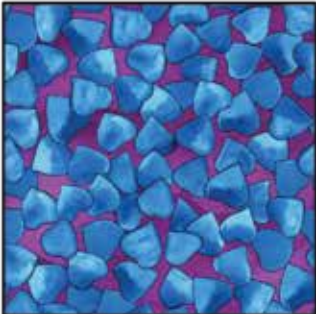
Owls - Amber  
1310-30



Birds - Light Blue  
1311-70



Leaves - Green  
1312-66



Leaves - Blue  
1312-75



Animal Panel - Dark Blue  
1313P-77

### Select Fabrics from the Jot Dot and Urban Legend Collections



Jot Dot  
Fog  
9570-93



Urban Legend  
Dark Purple  
7101-55

### Materials

1 panel	Animal Panel - Dark Blue (A)	1313P-77
1 ¼ yards	Jot Dot - Fog (B)	9570-93
½ yard	Allover Floral - Green (C)	1307-66
½ yard	Leaves - Blue (D)	1312-75
⅞ yard	Birds - Light Blue (E)	1311-70
2 yards	Animals with Leaves - Green (F)	1306-66
⅔ yard	Urban Legend - Dark Purple (G)	7101-55*
4 ¼ yards	Leaves - Green (Backing)	1312-66

\*Includes binding

### Cutting Instructions

Please note: All strips are cut across the width of fabric (WOF) from selvage to selvage unless otherwise noted.

#### From the Animal Panel - Dark Blue (A):

- Fussy cut (1) 34 ½" x 42 ½" rectangle, centered on the panel.

#### From the Jot Dot - Fog (B), cut:

- (4) 2 ½" x WOF strips.
- (2) 2" x 42 ½" WOF strips, piece as needed.
- (2) 2" x 37 ½" WOF strips.
- (3) 2" x WOF strips. Sew the strips together end to end with diagonal seams and cut (2) 2" x 60 ½" strips.
- (3) 2" x WOF strips. Sew the strips together end to end with diagonal seams and cut (2) 2" x 55 ½" strips.
- (6) 1 ½" x WOF strips. Sub-cut (96) 1 ½" x 2 ½" strips.

#### From the Allover Floral - Green (C), cut:

- (8) 1 ½" x WOF strips.

#### From the Leaves - Blue (D), cut:

- (8) 1 ½" x WOF strips.

#### From the Birds - Light Blue (E), cut:

- (6) 4 ½" x WOF strips. Sub-cut (48) 4 ½" squares.

#### From the Animals with Leaves - Green (F), cut:

- (2) 6 ½" x 63 ½" Length of Fabric (LOF) strips.
- From the remaining fabric, cut (2) 6 ½" x 67 ½" strips, piece as needed.

#### From the Urban Legend - Dark Purple (G), cut:

- (8) 2 ½" x WOF strips for the binding.

#### From the Leaves - Green (Backing), cut:

- (2) 75" x WOF strips for the backing. Sew the strips together and trim to make the 75" x 83" back.

### Block Assembly

Note: The arrows figures represent the fabric print direction. Pay attention to the fabric and unit orientations when assembling the various components.

1. Sew (1) 2" x 42 ½" Fabric B strip to each side of the 34 ½" x 42 ½" Fabric A panel. Sew (1) 2" x 37 ½" Fabric B strip to the top and to the bottom of the Fabric A panel. **Trim the block to measure 36 ½" x 44 ½"** to make the Center Block.

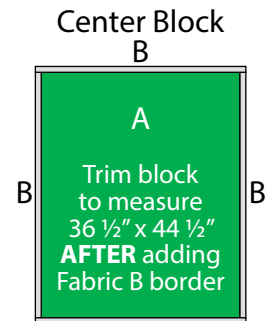


Fig. 1 B

2. Sew (1) 1 ½" x WOF Fabric C strip, (1) 2 ½" x WOF Fabric B strip and (1) 1 ½" x WOF Fabric D strip together lengthwise and in that order left to right to make (1) Strip Set 1 (Fig. 2).

Repeat to make (4) Strip Set 1's total.

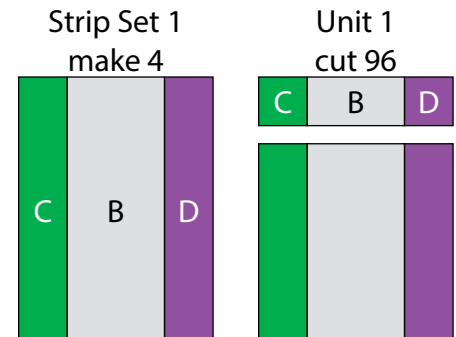


Fig. 2

Fig. 3

3. Cut the Strip Set 1's into (96) 1 ½" x 4 ½" Unit 1 strips (Fig. 3).

4. Sew (1) 1 ½" x WOF Fabric C strip to the left side of (1) 1 ½" x WOF Fabric D strip lengthwise to make (1) Strip Set 2 (Fig. 4). Repeat to make (4) Strip Set 2's.

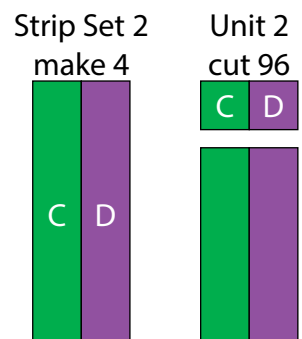


Fig. 4

Fig. 5

5. Cut the Strip Set 2's into (96) 1 ½" x 2 ½" Unit 2 strips (Fig. 5).

6. Sew (2) Unit 2 strips together lengthwise to make (1) Unit 3 square (Fig. 6). Repeat to make (48) Unit 3 squares total.



Fig. 6

7. Sew (1) 1 1/2" x 2 1/2" Fabric B strip to each side of (1) Unit 3 square. Sew (1) Unit 1 strip to the top and to the bottom of the Unit 3 square to make (1) Unit 4 square (Fig. 7). Repeat to make (48) Unit 4 squares total.

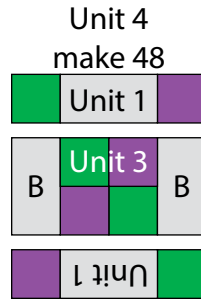


Fig. 7

8. Sew (1) Unit 4 square to the left side of (1) 4 1/2" Fabric E square to make (1) Unit 5 strip (Fig. 8). Repeat to make (11) Unit 5 strips total.

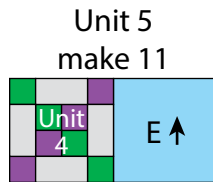


Fig. 8

9. Repeat Step 8 and refer to Figures 9-11 for component identification, placement and orientation to make (11) Unit 6 strips, (13) Unit 7 strips and (13) Unit 8 strips.

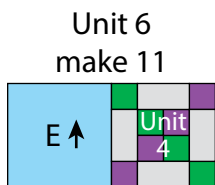


Fig. 9

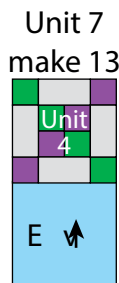


Fig. 10

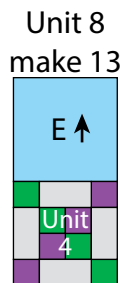


Fig. 11

10. Sew together (6) Unit 5 strips and (5) Unit 6 strips lengthwise and alternating them to make the Left Side Border (Fig. 12).

Left Side Border

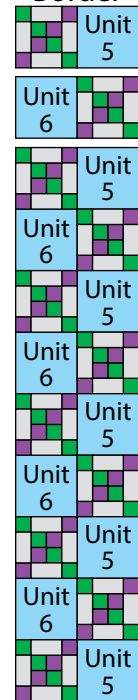


Fig. 12

Right Side Border

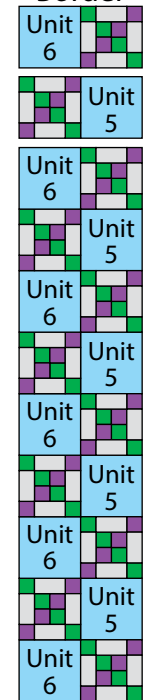


Fig. 13

11. Sew together (6) Unit 6 strips and (5) Unit 5 strips lengthwise and alternating them to make the Right Side Border (Fig. 13).

12. Sew together (7) Unit 7 strips and (6) Unit 8 strips lengthwise and alternating them to make the Top Border (Fig. 14 below).

13. Sew together (7) Unit 8 strips and (6) Unit 7 strips lengthwise and alternating them to make the Bottom Border (Fig. 15 below).

Top Border

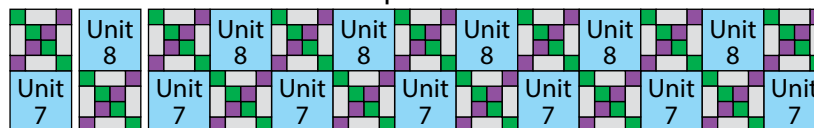


Fig. 14

Bottom Border



Fig. 15

### Quilt Top Assembly

(Follow the Quilt Layout while assembling the quilt top.)

14. Sew the Left Side Border and Right Side Border to the left and to the right of the Center Block. Sew the Top Border and Bottom Border to the top and to the bottom of the Center Block.

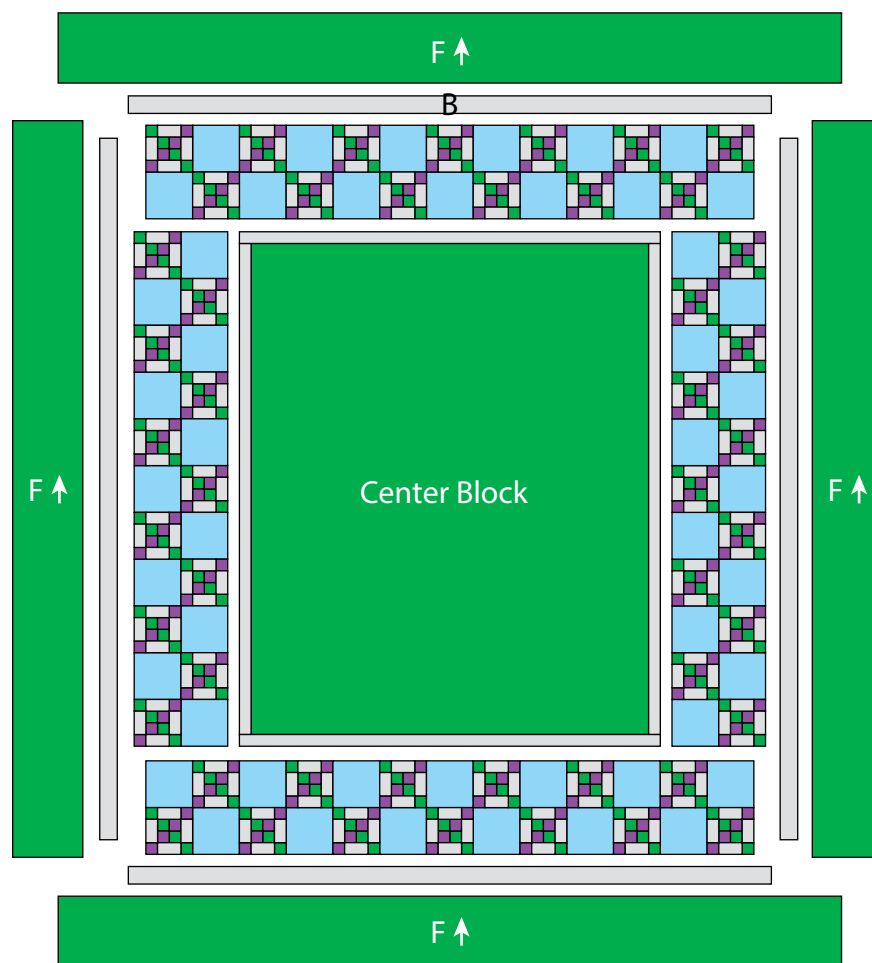
15. Sew (1) 2" x 60 1/2" Fabric B strip to each side of the Center Block. Sew (1) 2" x 55 1/2" Fabric B strip to the top and to the bottom of the Center Block.

16. Sew (1) 6 1/2" x 63 1/2" Fabric F strip to each side of the Center Block. Sew (1) 6 1/2" x 67 1/2" Fabric F strip to the top and to the bottom of the Center Block to make the quilt top.

17. Layer and quilt as desired.

18. Sew the (8) 2 1/2" x WOF Fabric G strips together, end to end with 45-degree seams, to make the binding. Fold this long strip in half lengthwise with wrong sides together and press.

19. Bind as desired.



Quilt Layout

Every effort has been made to ensure that all projects are error free. All the information is presented in good faith, however no warranty can be given nor results guaranteed as we have no control over the execution of instructions. Therefore, we assume no responsibility for the use of this information or damages that may occur as a result. When errors are brought to our attention, we make every effort to correct and post a revision as soon as possible. Please make sure to check [www.blankquilting.net](http://www.blankquilting.net) for pattern updates prior to starting the project. We also recommend that you test the project prior to cutting for kits. Finally, all free projects are intended to remain free to you and are **not for resale**.