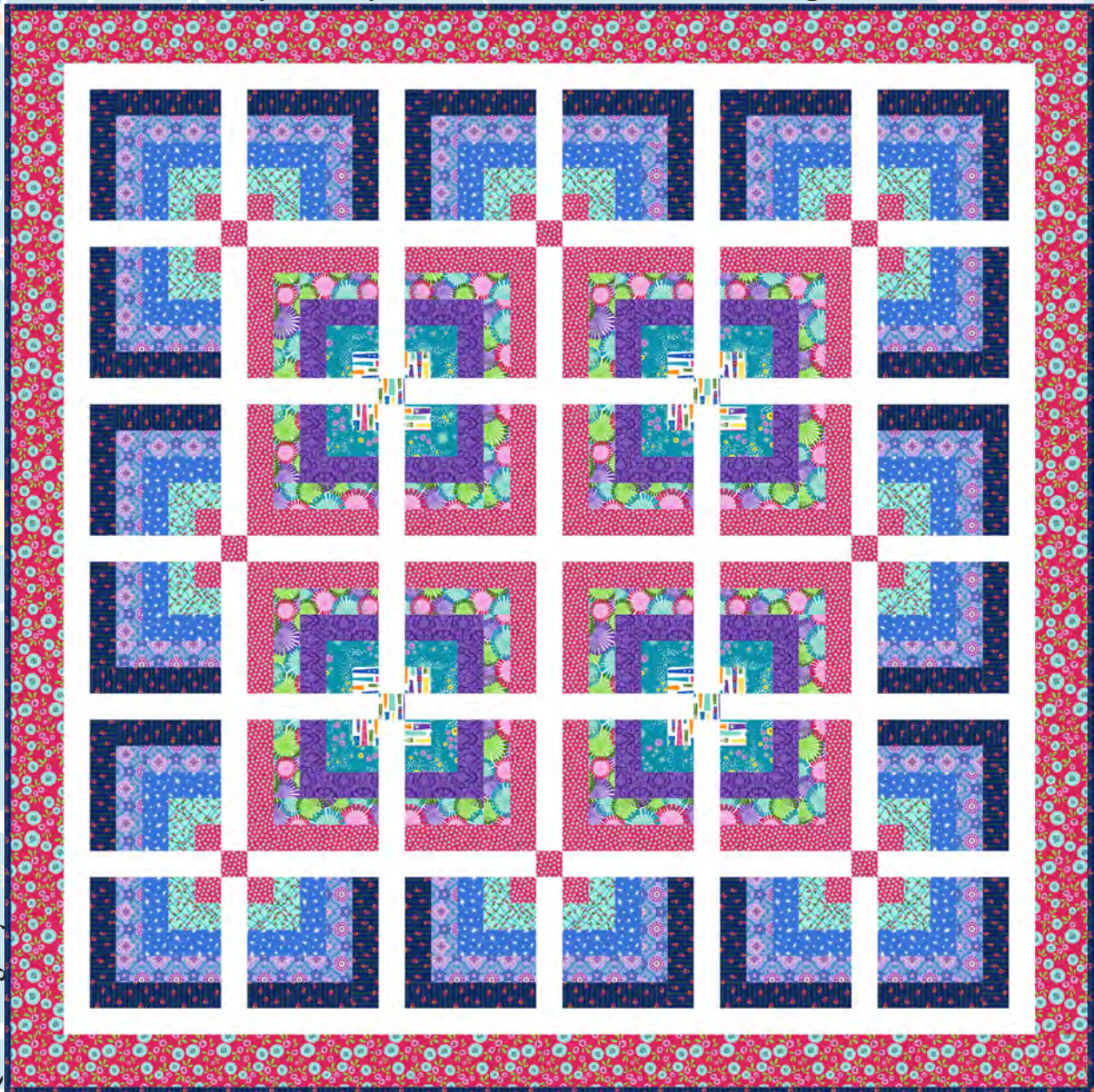




Quilt 1

# Xanadu

by Nancy Lorene for Villa Rosa Designs



Quilt design by Denise Russell.

Quilt size: 82" x 82"

Skill Level: Beginner

Blank Quilting Corporation  
49 West 37th Street ♦ New York, NY 10018  
Tel: 800-294-9495 ♦ Fax: 212-679-4578  
www.blankquilting.net



Free Project  
NOT FOR RESALE

# *Xanadu* - Fabrics in the Collection



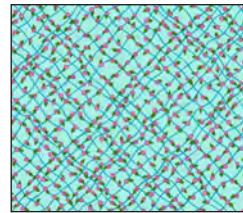
2825-77 Floral  
Navy



2826-66 Fans  
Green



2827-01 Abstract  
Lines - White



2828-60 Mini Rose  
Trellis - Aqua



2829-50 Set Floral  
Lilac



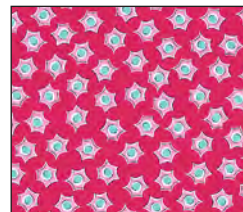
2830-55 Damask  
Purple



2831-77 Stripe with  
Mini Flowers - Navy



2832-75 Stars  
Royal



2833-22 Foulard  
Fuchsia



2834-22 Abstract  
Roses - Fuchsia

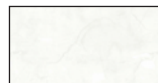


2835-55 Small Blocks  
Purple



2836-67 Stars, Flowers,  
and Dots - Teal

Selected fabric from the Eclipse Collection



3955  
White

## Materials

*Yardages and cutting instructions are based on 42" of usable fabric width.*

1/4 yard 2827-01 Abstract Lines - White  
1/4 yard 2836-67 Stars, Flowers, and Dots - Teal  
3/8 yard 2828-60 Mini Rose Trellis - Aqua  
3/8 yard 2830-55 Damask - Purple  
1/2 yard 2826-66 Fans - Green  
1/2 yard 2832-75 Stars - Royal  
5/8 yard 2829-50 Set Floral - Lilac  
3/4 yard 2833-22 Foulard - Fuchsia  
1-1/8 yards 2834-22 Abstract Roses - Fuchsia  
1-3/8 yards 2831-77 Stripe with Mini Flowers - Navy  
2 yards 3955 Eclipse - White  
7-1/2 yards 2825-77 Floral - Navy for backing  
90" x 90" piece of Air Lite® Colour Me 100% Cotton batting

## Cut Fabrics

*Note: All strips are cut across the width of the fabric (WOF) from selvage to selvage unless otherwise indicated.*

### From 2827-01 Abstract Lines – White, cut:

\*Two 2-1/2" x WOF strips. Sub-cut twenty 2-1/2" squares.

### From 2836-67 Stars, Flowers, and Dots – Teal, cut:

\*One 2-1/2" x WOF strip. Sub-cut sixteen 2-1/2" squares.

\*One 4-1/2" x WOF strip. Sub-cut sixteen 2-1/2" x 4-1/2" rectangles.

### From 2828-60 Mini Rose Trellis – Aqua, cut:

\*Two 2-1/2" x WOF strips. Sub-cut twenty 2-1/2" squares and four 2-1/2" x 4-1/2" rectangles.

\*One 4-1/2" x WOF strip. Sub-cut sixteen 2-1/2" x 4-1/2" rectangles, for a total of twenty.

### From 2830-55 Damask – Purple, cut:

\*One 4-1/2" x WOF strip. Sub-cut sixteen 2-1/2" x 4-1/2" rectangles.

\*One 6-1/2" x WOF strip. Sub-cut sixteen 2-1/2" x 6-1/2" rectangles.

### From 2826-66 Fans – Green, cut:

\*One 6-1/2" x WOF strip. Sub-cut sixteen 2-1/2" x 6-1/2" rectangles.

\*One 8-1/2" x WOF strip. Sub-cut sixteen 2-1/2" x 8-1/2" rectangles.

### From 2832-75 Stars – Royal, cut:

\*Two 2-1/2" x WOF strips. Sub-cut four 2-1/2" x 4-1/2" rectangles and four 2-1/2" x 6-1/2" rectangles.

\*One 4-1/2" x WOF strip. Sub-cut sixteen 2-1/2" x 4-1/2" rectangles, for a total of twenty.

\*One 6-1/2" x WOF strip. Sub-cut sixteen 2-1/2" x 6-1/2" rectangles, for a total of twenty.

### From 2829-50 Set Floral – Lilac, cut:

\*Two 2-1/2" x WOF strips. Sub-cut four 2-1/2" x 6-1/2" rectangles and four 2-1/2" x 8-1/2" rectangles.

\*One 6-1/2" x WOF strip. Sub-cut sixteen 2-1/2" x 6-1/2" rectangles, for a total of twenty.

\*One 8-1/2" x WOF strip. Sub-cut sixteen 2-1/2" x 8-1/2" rectangles, for a total of twenty.

### From 2833-22 Foulard – Fuchsia, cut:

\*Two 2-1/2" x WOF strips. Sub-cut twenty-eight 2-1/2" squares.

\*One 8-1/2" x WOF strip. Sub-cut sixteen 2-1/2" x 8-1/2" rectangles.

\*One 10-1/2" x WOF strip. Sub-cut sixteen 2-1/2" x 10-1/2" rectangles.

### From 2834-22 Abstract Roses – Fuchsia, cut:

\*Eight 4-1/2" x WOF strips for border 2.

### From 2831-77 Stripe with Mini Flowers – Navy, cut:

\*Two 2-1/2" x WOF strips. Sub-cut four 2-1/2" x 8-1/2" rectangles and four 2-1/2" x 10-1/2" rectangles.

\*One 8-1/2" x WOF strip. Sub-cut sixteen 2-1/2" x 8-1/2" rectangles, for a total of twenty.

\*One 10-1/2" x WOF strip. Sub-cut sixteen 2-1/2" x 10-1/2" rectangles, for a total of twenty.

\*Nine 2-1/2" x WOF strips for binding.

# Xanadu - Quilt 1

## From 3955 Eclipse – White, cut:

- \*One 2-1/2" x WOF strip. Sub-cut four 2-1/2" x 10-1/2" rectangles.
- \*Two 10-1/2" x WOF strips. Sub-cut thirty-two 2-1/2" x 10-1/2" rectangles, for a total of thirty-six.
- \*One 22-1/2" x WOF strip. Sub-cut thirteen 2-1/2" x 22-1/2" rectangles.
- \*Eight 2-1/2" x WOF strips for border 1.

## From 2825-77 Floral – Navy, cut:

- \*Three 90" x WOF panels, pieced horizontally.

## Assemble Blocks

*Note: Measurements include 1/4" seam allowances. Sew with right sides together unless otherwise stated. If no direction is specified, press the seam toward the darker fabric. Group fabrics by block to facilitate assembly.*

1. Sew one 2-1/2" 2828-60 Mini Rose Trellis – Aqua square to one 2-1/2" 2833-22 Foulard – Fuchsia square. Make twenty units. Press the seams toward the darker fabric. Repeat with sixteen 2-1/2" 2827-01 Abstract Lines – White squares and the 2-1/2" 2836-67 Stars, Flowers, and Dots – Teal squares (*figure 1*). These units are labeled in the block diagram below as "1a/Ctr".



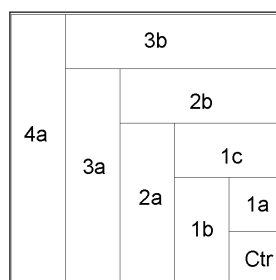
For blocks X – Make 20. For blocks Y – Make 16.

Figure 1 – Make (36) assorted 2-1/2" x 4-1/2" units.

2. Sew the following strips to the Step 1 center units in order. Refer to the block diagram below and Table 1 for each round's sewing sequence and strip size.

| Round Location | Fabric Block X/Block Y   | Strip Size       |
|----------------|--|------------------|
| 1b             | 2828-60 Mini Rose Trellis – Aqua/2836-67 Stars, Flowers, and Dots – Teal | 2-1/2" x 4-1/2"  |
| 1c             | 2832-75 Stars – Royal/2830-55 Damask – Purple                            | 2-1/2" x 4-1/2"  |
| 2a             | 2832-75 Stars – Royal/2830-55 Damask – Purple                            | 2-1/2" x 6-1/2"  |
| 2b             | 2829-50 Set Floral – Lilac/2826-66 Fans – Green                          | 2-1/2" x 6-1/2"  |
| 3a             | 2829-50 Set Floral – Lilac/2826-66 Fans – Green                          | 2-1/2" x 8-1/2"  |
| 3b             | 2831-77 Stripe with Mini Flowers – Navy/2833-22 Foulard – Fuchsia        | 2-1/2" x 8-1/2"  |
| 4a             | 2831-77 Stripe with Mini Flowers – Navy/2833-22 Foulard – Fuchsia        | 2-1/2" x 10-1/2" |

Table 1. Sewing sequence, fabric used, and strip size for blocks X and Y.



Block Diagram

3. As each strip is added, notice the following:
  - a. The blocks can be chain-pieced, i.e., do the same step for blocks X and Y.
  - b. After stitching each round, press the strips open with the seams toward the last addition.
4. Make twenty blocks X and sixteen blocks Y. The blocks finish at 10-1/2" (*figure 2*).



Figure 2 – Make (36) assorted 10-1/2" blocks.

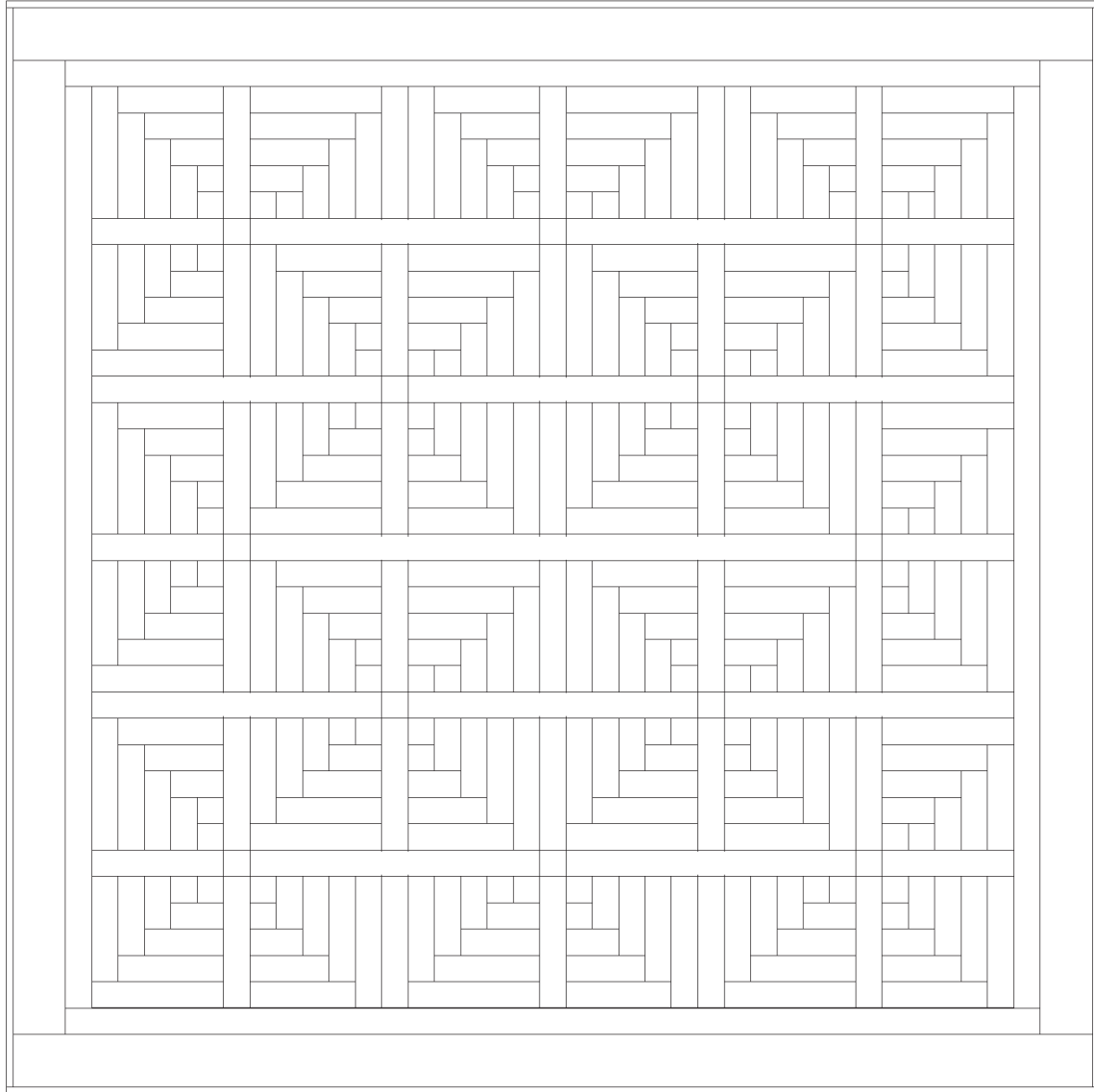
## Assemble Quilt Top

5. Referring to the quilt photo for block placement and fabric orientation, lay out six blocks and five 2-1/2" x 10-1/2" 3955 Eclipse – White sashing strips in six rows, and join the blocks and sashing strips together in each row. Press the seams toward the blocks.
6. Make the horizontal sashing rows as follows, pressing the seams toward the darker fabric:
  - a. For sashing rows 1 and 5, sew together two 2-1/2" x 10-1/2" 3955 Eclipse – White sashing strips, two 2-1/2" x 22-1/2" Eclipse – White strips, and three 2-1/2" 2833-22 Foulard – Fuchsia squares.
  - b. For sashing rows 2 and 4, sew three 2-1/2" x 22-1/2" Eclipse – White strips and two 2-1/2" 2827-01 Abstract Lines – White squares.

- c. For sashing row 3, sew three 2-1/2" x 22-1/2" strips and trim the resulting long strip to 46-1/2" length. Sew one 2-1/2" Foulard – Fuchsia square to each end of this strip, then add one 2-1/2" x 10-1/2" Eclipse – White strip to each end.
7. Matching adjacent seams, sew block rows and horizontal sashing rows together. Press the seams in one direction.
8. For border 1, join the eight 2-1/2" 3955 Eclipse – White strips together end to end using diagonal seams. Measure the vertical length of the quilt top through the center and cut two border strips that length. Sew one strip to each side of the quilt top and press the seams toward the border strips. Measure the width of the quilt top through the center. Cut two border strips that length and sew one to the top and one to the bottom. Press the seams toward the borders.
9. Repeat Step 8 with the eight 4-1/2" 2834-22 Abstract Roses – Fuchsia strips to make and add border 2.

## Finishing

10. Create a quilt sandwich with the batting between the quilt top and the backing. Pin or baste layers together, mark the quilting design, and quilt by hand or machine. When quilting is complete, remove pins or basting, and trim batting and backing even with raw edges of the quilt top.
11. Join the nine 2-1/2" 2831-77 Stripe with Mini Flowers – Navy binding strips together end to end using a diagonal seam to make one long strip. With wrong sides together, fold in half lengthwise and press. Sew binding to the edges of the quilt, mitering corners, and overlapping ends. Fold binding to the back of the quilt and stitch it in place by hand to finish.



Quilt Diagram

©2022 Blank Quilting Corporation

*Every effort has been made to ensure that all projects are error free. All the information is presented in good faith; however, no warranty can be given nor results guaranteed as we have no control over the execution of instructions. Therefore, we assume no responsibility for the use of this information or damages that may occur as a result. When errors are brought to our attention, we make every effort to correct and post a revision as soon as possible. Please make sure to check [www.blankquilting.net](http://www.blankquilting.net) for pattern updates prior to starting the project. We also recommend that you test the project prior to cutting for kits. Finally, all free projects are intended to remain free to you and are not for resale.*