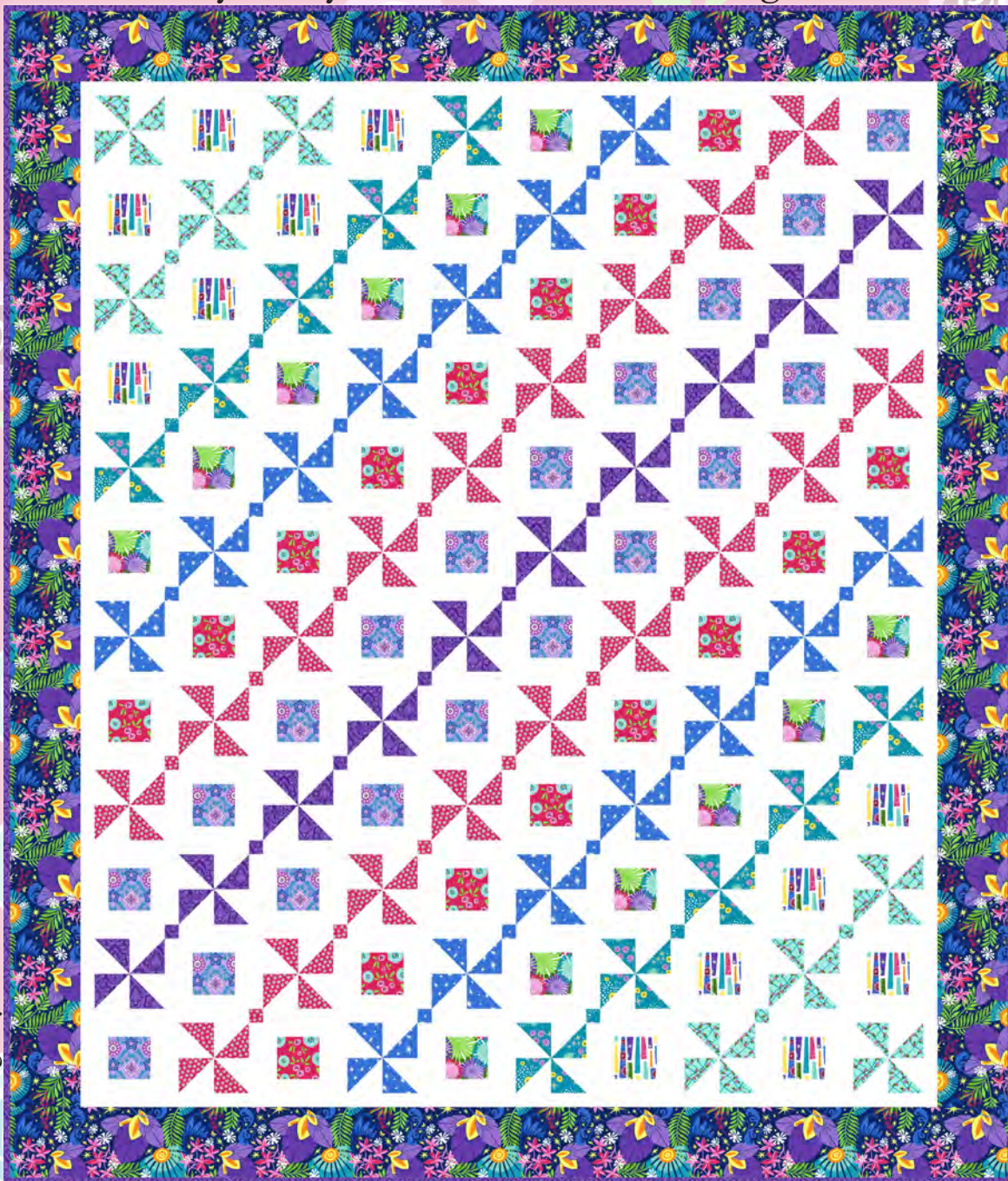


# Xanadu

by Nancy Lorene for Villa Rosa Designs



Quilt design by Denise Russell.

Quilt size: 71" x 83"

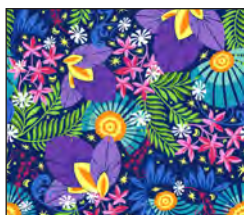
Skill Level: Beginner

**Blank Quilting Corporation**  
49 West 37th Street ♦ New York, NY 10018  
Tel: 800-294-9495 ♦ Fax: 212-679-4578  
[www.blankquilting.net](http://www.blankquilting.net)

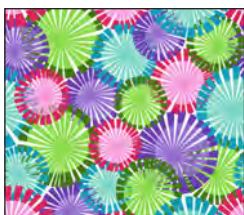
facebook

Free Project  
NOT FOR RESALE

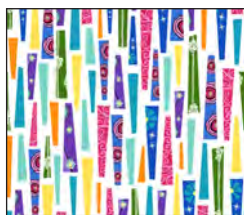
# *Xanadu* - Fabrics in the Collection



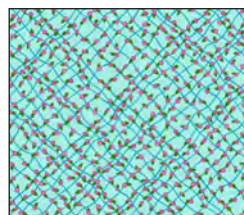
2825-77 Floral  
Navy



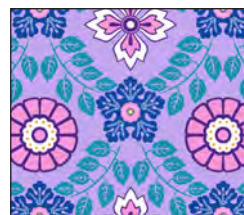
2826-66 Fans  
Green



2827-01 Abstract  
Lines - White



2828-60 Mini Rose  
Trellis - Aqua



2829-50 Set Floral  
Lilac



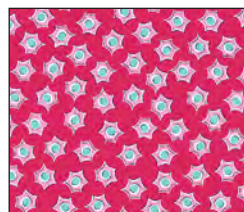
2830-55 Damask  
Purple



2831-77 Stripe with  
Mini Flowers - Navy



2832-75 Stars  
Royal



2833-22 Foulard  
Fuchsia



2834-22 Abstract  
Roses - Fuchsia

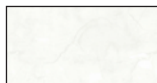


2835-55 Small Blocks  
Purple



2836-67 Stars, Flowers,  
and Dots - Teal

Selected fabric from the Eclipse Collection



3955  
White

## Materials

*Yardages and cutting instructions are based on 42" of usable fabric width.*

1/4 yard 2826-66 Fans - Green  
1/4 yard 2827-01 Abstract Lines - White  
1/4 yard 2828-60 Mini Rose Trellis - Aqua  
1/4 yard 2829-50 Set Floral - Lilac  
1/4 yard 2834-22 Abstract Roses - Fuchsia  
1/4 yard 2836-67 Stars, Flowers, and Dots - Teal  
3/8 yard 2832-75 Stars - Royal  
3/8 yard 2833-22 Foulard - Fuchsia  
7/8 yard 2830-55 Damask - Purple  
1-1/4 yards 2825-77 Floral - Navy  
3-7/8 yards 3955 Eclipse - White  
5-1/4 yards 2826-66 Fans - Green for backing  
79" x 91" piece of Air Lite® Colour Me 100% Cotton batting

## Cut Fabrics

*Note: All strips are cut across the width of the fabric (WOF) from selvage to selvage unless otherwise indicated.*

### From each, cut:

#### 2826-66 Fans - Green

#### 2827-01 Abstract Lines - White

\*One 3-1/2" x WOF strip. Sub-cut twelve 3-1/2" squares.

#### From 2828-60 Mini Rose Trellis - Aqua, cut:

\*Two 3-3/8" x WOF strips. Sub-cut sixteen 3-3/8" squares and four 1-1/2" squares.

#### From 2829-50 Set Floral - Lilac, cut:

\*Two 3-1/2" x WOF strips. Sub-cut twenty 3-1/2" squares.

#### From 2834-22 Abstract Roses - Fuchsia, cut:

\*Two 3-1/2" x WOF strips. Sub-cut sixteen 3-1/2" squares.

#### From 2836-67 Stars, Flowers, and Dots - Teal, cut:

\*Two 3-3/8" x WOF strips. Sub-cut twenty 3-3/8" squares and eight 1-1/2" squares.

#### From 2832-75 Stars - Royal, cut:

\*Three 3-3/8" x WOF strips. Sub-cut twenty-eight 3-3/8" squares and twelve 1-1/2" squares.

#### From 2833-22 Foulard - Fuchsia, cut:

\*One 1-1/2" x WOF strip. Sub-cut sixteen 1-1/2" squares.

\*Three 3-3/8" x WOF strips. Sub-cut thirty-six 3-3/8" squares.

#### From 2830-55 Damask - Purple, cut:

\*Two 3-3/8" x WOF strips. Sub-cut twenty 3-3/8" squares and nine 1-1/2" squares.

\*Eight 2-1/2" x WOF strips for binding.

#### From 2825-77 Floral - Navy, cut:

\*Seven 5-1/2" x WOF strips for border 2.

#### From 3955 Eclipse - White, cut:

\*Ten 3-3/8" x WOF strips. Sub-cut (120) 3-3/8" squares.

\*Five 3-1/2" x WOF strips. Sub-cut (120) 1-1/2" x 3-1/2" strips.

\*Nine 5-1/2" x WOF strips. Sub-cut (238) 1-1/2" x 5-1/2" strips.

\*Two 11-1/2" x WOF strips. Sub-cut fifty 1-1/2" x 11-1/2" strips.

\*Six 1-1/2" x WOF strips for border 1.

#### From 2826-66 Fans - Green, cut:

\*Two 91" x WOF panels, pieced vertically.

## Assemble Blocks

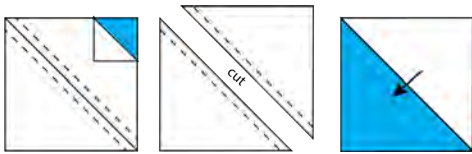
*Notes:*

- *Measurements include 1/4" seam allowances. Sew with right sides together unless otherwise stated. If no direction is specified, press the seam toward the darker fabric.*

1. Draw a diagonal line from corner to corner on the wrong side of the 3-3/8" 3955 Eclipse - White squares. With right sides together, layer the marked White squares atop the 3-3/8" 2828-60 Mini Rose Trellis - Aqua squares. Stitch 1/4" from each side of the diagonal line, cut on the drawn line, press each unit open

with seams toward the darker fabric, and trim dog ears (*figure 1*). Make thirty-two 3" White/Aqua half-square triangles (HST).

Repeat this step with the remaining 3-3/8" White squares and the 3-3/8" 2836-67 Stars, Flowers, and Dots – Teal, 2832-75 Stars – Royal, 2833-22 Foulard – Fuchsia, and 2830-55 Damask – Purple squares.



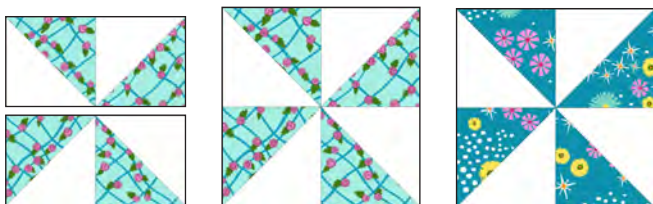
Aqua - Make 32    Teal - Make 40    Royal - Make 56



Fuchsia - Make 72    Purple - Make 40

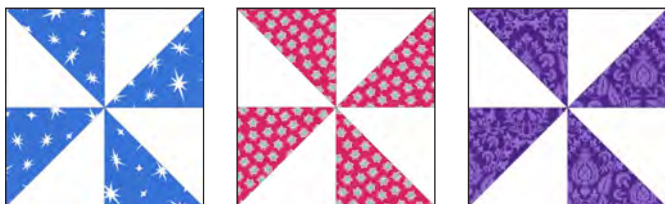
Figure 1 - Make 240 assorted 3" HST.

- Matching fabrics, sew the Step 1 units in groups of four to make sixty assorted 5-1/2" pinwheel blocks (*figure 2*). Press the seams open.



Make 8

Make 10



Make 14

Make 18

Make 10

Figure 2 - Make 60 assorted 5-1/2" blocks.

- Sew a 1-1/2" x 3-1/2" 3955 Eclipse - White strip to opposite sides of a 3-1/2" 2827-01 Abstract Lines - White square. Press the seams away from the center. Sew a 1-1/2" x 5-1/2" White strip to the top and one to the bottom of the square (*figure 3*). Press as before. Repeat to make twelve 5-1/2" blocks.

Repeat this step with the remaining White strips and the 3-1/2" 2826-66 Fans - Green, 2834-22 Abstract Roses - Fuchsia, and 2829-50 Set Floral - Lilac squares.



Make 12



Make 12

Make 16

Make 20

Figure 3 - Make 60 assorted 5-1/2" blocks.

## Assemble Quilt Top

- Referring to the quilt photo for block placement, lay out ten blocks and nine 1-1/2" x 5-1/2" 3955 Eclipse - White sashing strips in twelve rows, and join the blocks and sashing strips together in each row. Press the seams toward the blocks.
- Make the horizontal sashing rows as follows, pressing the seams toward the darker fabric:
  - For sashing rows 1, 3, 5, 7, 9, and 11, sew together five 1-1/2" x 11-1/2" 3955 Eclipse - White sashing strips and four assorted 1-1/2" squares.

- b. For sashing rows 2, 4, 6, 8, and 10, sew two 1-1/2" x 5-1/2" White strips, four 1-1/2" x 11-1/2" White strips, and five assorted 1-1/2" squares.
6. Matching adjacent seams, sew block rows and horizontal sashing rows together. Press the seams in one direction.
7. For border 1, join the six 1-1/2" 3955 Eclipse – White strips together end to end using diagonal seams. Measure the vertical length of the quilt top through the center and cut two border strips that length. Sew one strip to each side of the quilt top and press the seams toward the border strips. Measure the width of the quilt top through the center. Cut two border strips that length and sew one to the top and one to the bottom. Press the seams toward the borders.

8. Repeat Step 7 with the seven 5-1/2" 2825-77 Floral – Navy strips to make and add border 2.

## Finishing

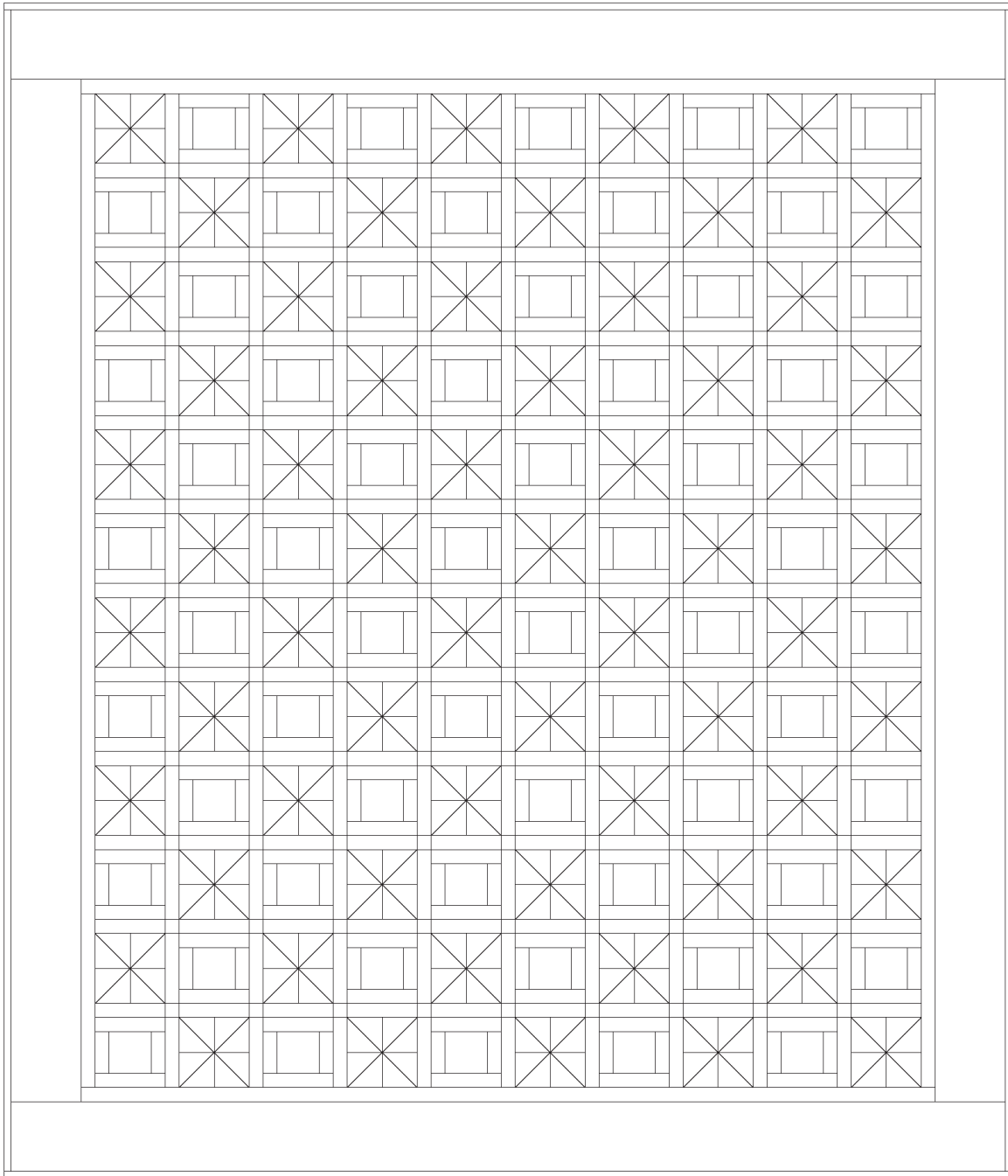
9. Create a quilt sandwich with the batting between the quilt top and the backing. Pin or baste layers together, mark the quilting design, and quilt by hand or machine. When quilting is complete, remove pins or basting, and trim batting and backing even with raw edges of the quilt top.
10. Join the eight 2-1/2" 2830-55 Damask – Purple binding strips together end to end using a diagonal seam to make one long strip. With wrong sides together, fold in half lengthwise and press. Sew binding to the edges of the quilt, mitering corners, and overlapping ends. Fold binding to the back of the quilt and stitch it in place by hand to finish.



©2022 Blank Quilting Corporation

*Every effort has been made to ensure that all projects are error free. All the information is presented in good faith; however, no warranty can be given nor results guaranteed as we have no control over the execution of instructions. Therefore, we assume no responsibility for the use of this information or damages that may occur as a result. When errors are brought to our attention, we make every effort to correct and post a revision as soon as possible. Please make sure to check [www.blankquilting.net](http://www.blankquilting.net) for pattern updates prior to starting the project. We also recommend that you test the project prior to cutting for kits. Finally, all free projects are intended to remain free to you and are not for resale.*

# *Xanadu* - Quilt 2



Quilt Diagram