



Table Runner Set
Revised

Yuletide Botanica

by Camelia Creations Studio

Table Runner Set design by Denise Russell.



Table runner size: 24" x 72"

Placemats size: 18-1/2" x 13-3/4"

Skill Level: Advanced Beginner

Blank Quilting Corporation
49 West 37th Street ♦ New York, NY 10018
Tel: 800-294-9495 ♦ Fax: 212-679-4578
www.blankquilting.net

facebook

Free Project
NOT FOR RESALE

Yuletide Botanica - Fabrics in the Collection



1063P-88 Panel - Red



1064-41 Large Floral
Ivory



1064-99 Large Floral
Black



1065-41 Poinsettia
Ivory



1065-99 Poinsettia
Black



1066-41 Christmas
Greenery - Ivory



1066-99 Christmas
Greenery - Black



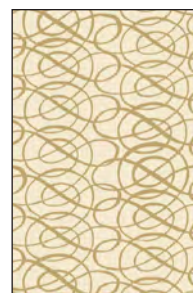
1067-99 Amaryllis
Black



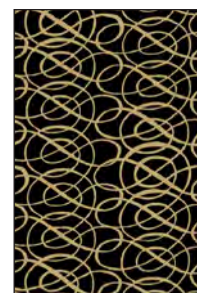
1068-88 Stripe - Red



1069-88 Noel - Red



1070-41 Scroll
Ivory



1070-99 Scroll
Black

Selected fabric from the Eclipse collection



3955 Red

Materials

Yardages and cutting instructions are based on 42" of usable fabric width

1/4 yard 1067-99 Amaryllis - Black
1/4 yard 1065-41 Poinsettia - Ivory
1/2 yard 1070-99 Scroll - Black
5/8 yard 1066-99 Christmas Greenery - Black
5/8 yard 3955 Eclipse - Red
1 yard 1070-41 Scroll - Ivory
1-3/8 yards 1065-99 Poinsettia - Black
2-1/8 yards 1066-41 Christmas Greenery - Ivory
3-1/4 yards 1069-88 Noel - Red for backing
36" x 84" piece of batting for runner
Six 14" x 19" pieces of batting for placemats
Fusible web

Cut Fabrics

Notes:

- (1) All strips are cut across the width of the fabric (WOF) from selvage to selvage unless otherwise indicated.
- (2) TR = table runner; P = placemats.
- (3) Group patches for the TR and P to facilitate assembly.

From each:

1067-99 Amaryllis - Black

1065-41 Poinsettia - Ivory

- *Cut one 5-1/2" x WOF strip. Sub-cut:
 - Three 5-1/2" squares (P); and
 - Two 4-1/2" squares (TR).

From 1070-99 Scroll - Black:

- *Cut five 2-1/2" x WOF strips for binding (TR).

From each:

1066-99 Christmas Greenery - Black

3955 Eclipse - Red

- *Cut one 2-1/2" x WOF strip. Sub-cut sixteen 2-1/2" squares (TR).
- *Cut one 3-3/8" x WOF strip. Sub-cut twelve 3-3/8" squares (P).
- *Cut two 4-1/2" x WOF strips. Sub-cut sixteen 4-1/2" squares (TR).

From 1070-41 Scroll - Ivory:

- *Cut one 2-1/2" x WOF strip. Sub-cut sixteen 2-1/2" squares (TR).
- *Cut two 3" x WOF strips. Sub-cut twenty-four 3" squares (P).
- *Cut one 4-1/2" x WOF strip. Sub-cut sixteen 2-1/2" x 4-1/2" rectangles (TR).
- *Cut one 6-1/4" x WOF strip. Sub-cut six 6-1/4" squares (P).
- *Cut one 8-1/2" x WOF strip. Sub-cut six 4-1/2" x 8-1/2" rectangles (TR).

From 1065-99 Poinsettia - Black:

- *Cut six 1-1/2" x WOF strips (border 2 - P).
- *Cut four 4" x WOF strips. Sub-cut twelve 4" x 12-1/2" rectangles (appliqué, border 2 - P)
- *Cut four 4-1/2" x WOF strips (appliqué, border - TR).

From 1066-41 Christmas Greenery - Ivory:

- *Cut seven 1-1/2" x WOF strips. Sub-cut:
 - Twelve 1-1/2" x 10-1/2" strips (border 1, sides - P); and
 - Twelve 1-1/2" x 12-1/2" strips (border 1, top/bottom - P).
- *Cut four 4" x WOF strips. Sub-cut twelve 4" x 12-1/2" rectangles (border 2 - P).
- *Cut ten 4-1/2" x WOF strips. Sub-cut:
 - Twenty 4-1/2" squares (TR);
 - Ten 4-1/2" x 8-1/2" rectangles (TR); and
 - Remaining four strips are for border (TR).

Table Runner

Assemble Blocks

Measurements include 1/4" seam allowances. Sew with right sides together unless otherwise stated. If no direction is specified, press seam toward darker fabric.

1. Draw a diagonal line on the wrong side of the sixteen 2-1/2" 3955 Eclipse - Red squares. With right sides together, layer a marked Eclipse - Red square on the left short end of a 2-1/2" x 4-1/2" 1070-41 Scroll - Ivory rectangle and stitch on the drawn line. Trim 1/4" away from the seam line and press open. In the same manner, stitch another Eclipse - Red square to the

Yuletide Botanica - Table Runner Set Page 2

opposite end of the same rectangle (*figure 1*). Repeat to make a total of sixteen flying-geese units.



Figure 1 – Make 16.

2. Repeat step 1 with the 2-1/2" 1066-99 Christmas Greenery – Black and the remaining 2-1/2" x 4-1/2" 1070-41 Scroll – Ivory rectangles to make sixteen flying-geese units (*figure 2*).



Figure 2 – Make 16.

3. Using the sixteen 2-1/2" 1070-41 Scroll – Ivory squares, the 4-1/2" 1067-99 Amaryllis – Black and 1065-41 Poinsettia – Ivory squares, and the steps 1 and 2 flying geese, assemble four 8-1/2" star blocks (*figure 3*). Press the seams open.

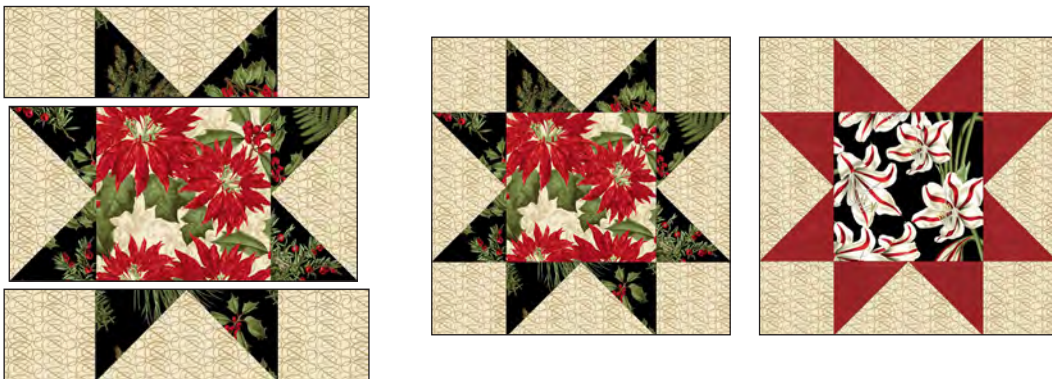


Figure 3 – Make 2 of each.

4. Repeat step 1 with the patches listed on table 1 to make the larger flying geese.

Fabric	(Quantity) Patch size	# of Flying Geese
1066-41 Christmas Greenery – Ivory	(5) 4-1/2" x 8-1/2"	Make 5.
1066-99 Christmas Greenery - Black	(10) 4-1/2" x 4-1/2"	
1066-41 Christmas Greenery – Ivory	(5) 4-1/2" x 8-1/2"	Make 5.
3955 Eclipse - Red	(10) 4-1/2" x 4-1/2"	
1070-41 Scroll – Ivory	(3) 4-1/2" x 8-1/2"	Make 3.
1066-99 Christmas Greenery - Black	(6) 4-1/2" x 4-1/2"	
1070-41 Scroll – Ivory	(3) 4-1/2" x 8-1/2"	Make 3.
3955 Eclipse - Red	(6) 4-1/2" x 4-1/2"	

Table 1. Fabric placement for flying geese.

5. Using the 4-1/2" 1066-41 Christmas Greenery – Ivory squares, the flying geese from step 4, and the star blocks from step 3, and noticing patch placement, assemble four 16-1/2" blocks as shown (*figure 4, next page*). Press the seams in one direction.

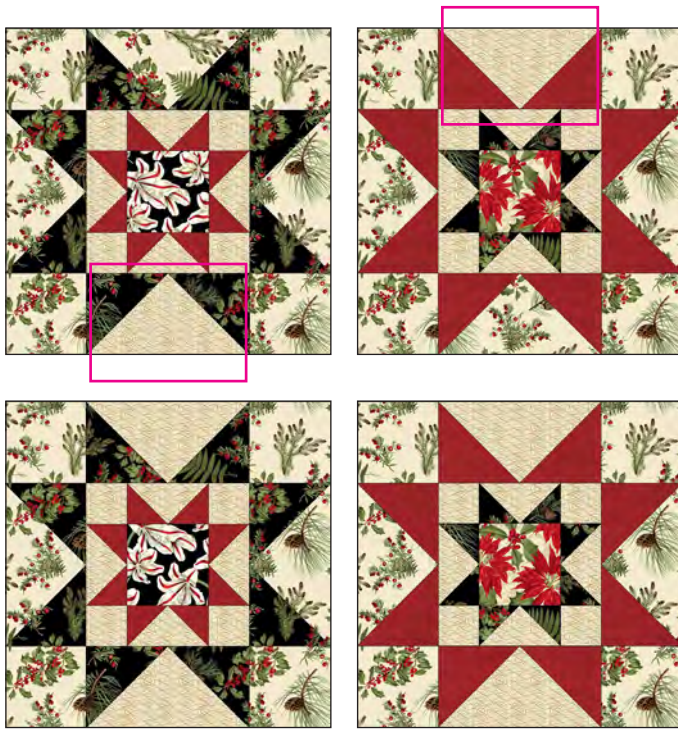


Figure 4.

Assemble Table Runner

6. Following the table runner photo for block placement, lay out the four blocks in a column and sew them together matching adjacent seams. Press the seams open. The table runner center measures 16-1/2" x 64-1/2" up to here.

7. Join the four 4-1/2" 1065-99 Poinsettia – Black border strips together end to end using diagonal seams. Cut this long strip into two 64-1/2" strips and two 16-1/2" strips. Repeat with the 4-1/2" 1066-41 Christmas Greenery – Ivory strips.

8. Place the table runner scallop shape (large) onto a light box or windowpane. Cut a 65" strip of fusible web and layer it onto the shape. Trace it eight times side by side (*figure 5*). Repeat to make another long strip of scallops. Cut the strips and fuse them to the wrong side of the 64-1/2" 1065-99 Poinsettia – Black strips from step 7. Cut on the outline and remove paper backing.

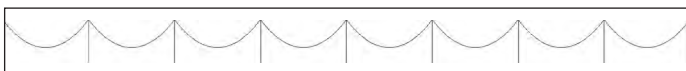


Figure 5

9. Layer the step 8 strips of scallops atop and on the edge of the 64-1/2" 1066-41 Christmas Greenery – Ivory border strips and fuse them according to manufacturer's instructions. There will be about 1/2" space between the tip of the scallops and the other edge of the border strips to ensure that, when the border is stitched to the table runner center, the tips of the scallops won't be stitched into the seam. Machine appliqué using matching thread and the blanket stitch.

10. Noting scallop orientation, stitch the step 9 border strips to the sides of the table runner. Press the seams toward center.

11. Repeat steps 8-10 with the 16-1/2" 1065-99 Poinsettia – Black strips and the 1066-41 Christmas Greenery – Ivory strips to make the top and bottom scalloped borders to the table runner, each with two scallop shapes.

12. Sew a 4-1/2" 1066-41 Christmas Greenery – Ivory square to both ends of the step 11 top and bottom border strips. Press the seams away from center. Stitch one strip to the top and one to the bottom of the table runner.

Finishing

13. Create a quilt sandwich with the batting between the runner and the backing. Pin or baste layers together, mark quilting design, and quilt by hand or machine. When quilting is complete, remove pins or basting, and trim batting and backing even with raw edges of the runner.

14. Join the five 2-1/2" 1070-99 Scroll – Black binding strips together end to end using a diagonal seam to make one long strip. Fold in half lengthwise and press. Sew binding to the edges of the runner, mitering corners, and overlapping ends. Fold binding to the back of the runner and stitch it in place by hand to finish.

Placemats

Assemble Blocks

1. Mark a diagonal line on the wrong side of the

3-3/8" 1066-99 Christmas Greenery - Black squares. With right sides together, place two marked Christmas Greenery - Black squares on opposite corners of one 6-1/4" 1070-41 Scroll - Ivory square making sure drawn lines are intersecting in the middle - corners of small squares will overlap. Stitch 1/4" on each side of the marked line (a), cut on the drawn line (b), and press each unit open (c). Place one more marked Christmas Greenery - Black square on the corner of each unit, stitch as before (d), and cut. Press the seams open (e) to make four 3-1/2" x 5-1/2" flying geese. Repeat with the remaining 3-7/8" 1066-99 Christmas Greenery - Black and the 6-1/4" 1070-41 Scroll - Ivory squares to make a total of twelve flying geese (*figure 1*).

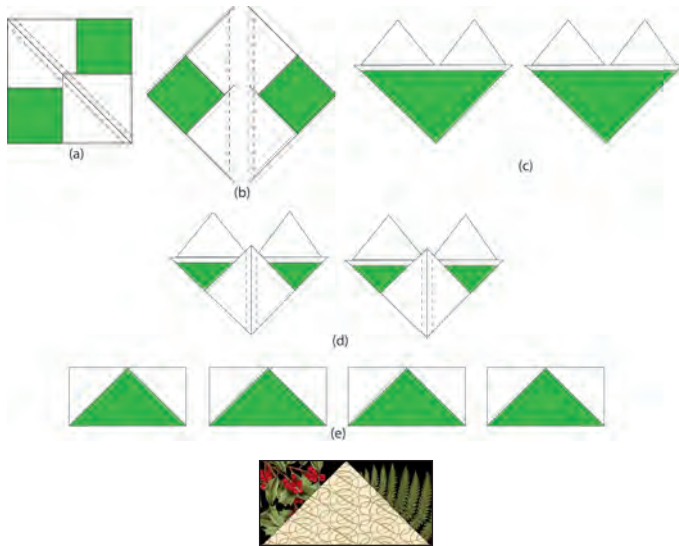


Figure 1 – Make 12.

2. Repeat step 1 with the 3-3/8" 3955 Eclipse - Red and the remaining 6-1/4" 1070-41 Scroll - Ivory squares to make twelve flying-geese units (*figure 2*).



Figure 2 – Make 12.

3. Assemble six 10-1/2" star blocks by using the 3" 1070-41 Scroll - Ivory squares, the steps 1 and 2 flying geese, and the 5-1/2" 1067-99 Amaryllis - Black and 1065-41 Poinsettia - Ivory squares to make three

blocks of each type (*figure 3*). Press the seams open.

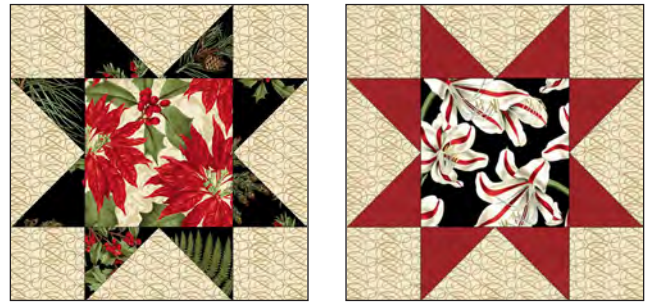


Figure 3 – Make 3 of each.

4. Sew two 1-1/2" x 10-1/2" 1066-41 Christmas Greenery - Ivory strips to opposite sides of the step 3 star blocks. Press the seams away from center. Sew two 1-1/2" x 12-1/2" 1066-41 Christmas Greenery - Ivory strips to the top and to the bottom of the same blocks (*figure 4*). Press the seams away from center.



Figure 4

Assemble Placemats

5. Place the placemat scallop shape (small) onto a light box or windowpane. Cut a 13" strip of fusible web and layer it onto the shape. Trace it two times side by side. Repeat to make eleven more strips with two scallops each. Cut the strips and fuse them to the wrong side of the twelve 4" x 12-1/2" 1065-99 Poinsettia - Black strips rectangles. Cut on the outline and remove paper backing.

6. Layer the step 5 strips of scallops atop and on the edge of the 4" x 12-1/2" 1066-41 Christmas Greenery - Ivory border strips and fuse them according to manufacturer's instructions. There will be about 1/2" space between the tip of the scallops and the other edge of the border strips to ensure that, when the border is stitched to the placemat center, the tips of the scallops

won't be stitched into the seam. Machine appliqué using matching thread and the blanket stitch.

7. Noting scallop orientation, stitch the step 6 border strips to the sides of the step 4 blocks. Press the seams toward center.

8. Sew the 1-1/2" 1065-99 Poinsettia – Black strips to the top and to the bottom of the step 7 units to complete the placemats. Press the seams away from center.

Finishing

9. Measure the placemats and cut six rectangles from the 1069-88 Noel backing fabric the same size. Layer

the placemats **right sides together** atop the backing rectangles. Layer a piece of batting on top. Sew around the placemats using a 1/4" seam allowance and leaving a 4" opening. Trim placemats at the seam allowance.

10. Turn placemats inside out, close opening with a hand stitch (or pin to close them when topstitching), press, and topstitch 1/2" inside the edge.

Templates

