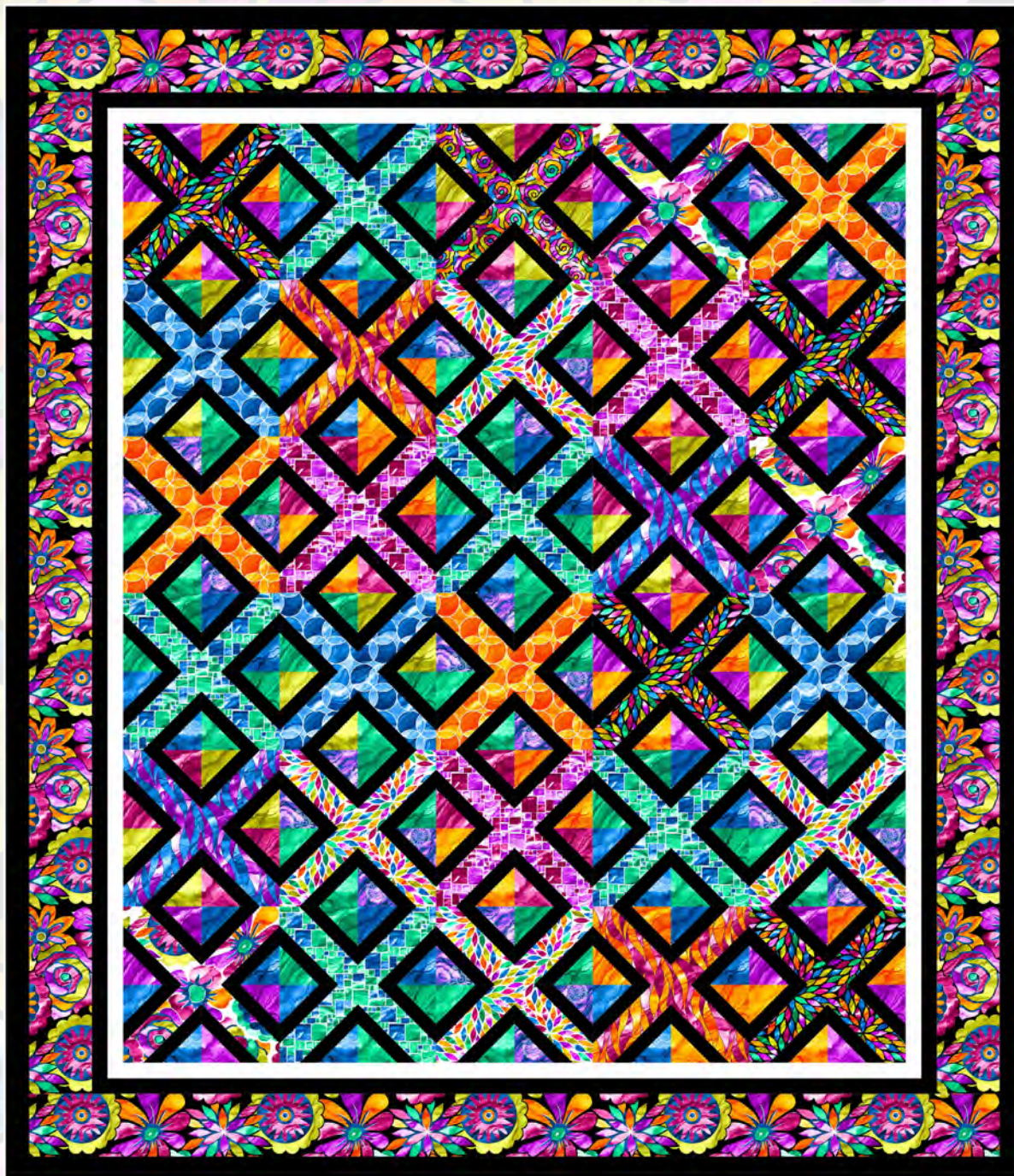




Quilt 1

# Aziza

by Jackie Decker



Quilt design by Denise Russell.

Quilt size: 64" x 74"

Skill Level: Advanced Beginner

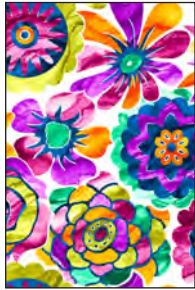
Blank Quilting Corporation  
49 West 37th Street ♦ New York, NY 10018  
Tel: 800-294-9495 ♦ Fax: 212-679-4578  
[www.blankquilting.net](http://www.blankquilting.net)

facebook

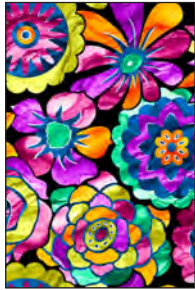
Free Project  
NOT FOR RESALE



# Aziza ~ Fabrics in the Collection



1054-01 Large Floral  
White



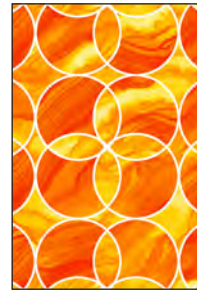
1054-99 Large Floral  
Black



1055-23 Wavy Lines  
Pink



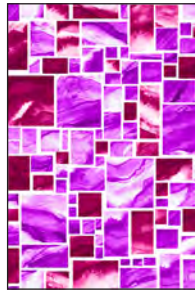
1055-75 Wavy Lines  
Blue



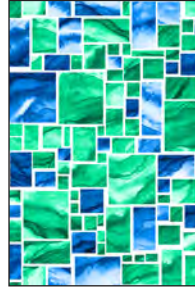
1056-33 Circles  
Orange



1056-77 Circles  
Blue



1057-52 Tiles  
Purple



1057-67 Tiles  
Teal



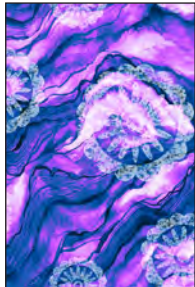
1058-01 Floral  
Burst - White



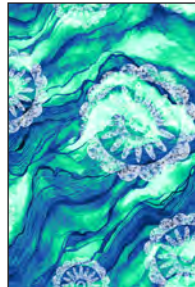
1058-99 Floral  
Burst - Black



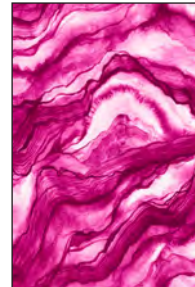
1059-99 Packed  
Floral - Black



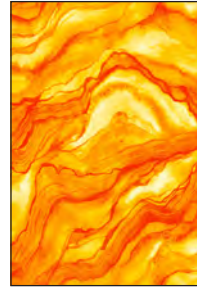
1060-57 Texture  
w/stamped floral  
Purple



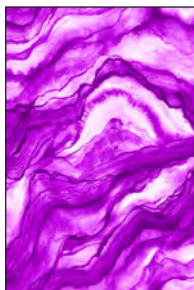
1060-67 Texture w/  
stamped floral  
Teal



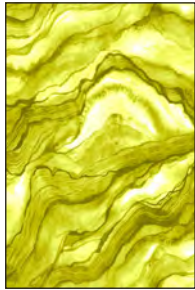
1061-22 Marble  
Texture - Fuchsia



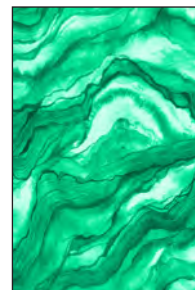
1061-33 Marble  
Texture - Orange



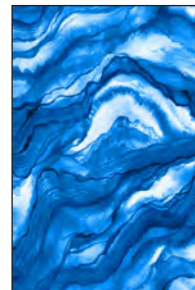
1061-55 Marble  
Texture - Purple



1061-62 Marble  
Texture  
Chartreuse

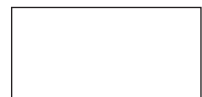


1061-67 Marble  
Texture - Teal



1061-77 Marble  
Texture - Blue

Selected fabrics  
from the Eclipse  
Collection



3955 White



3955 Jet Black

## Materials

Yardages and cutting instructions are based on 42" of usable fabric width

1/4 yard 1061-55 Marble Texture - Purple  
 1/4 yard 1061-62 Marble Texture - Chartreuse  
 1/4 yard 1061-22 Marble Texture - Fuchsia  
 1/4 yard 1060-57 Texture w/Stamped Floral - Purple  
 1/3 yard 1061-33 Marble Texture - Orange  
 1/3 yard 1061-77 Marble Texture - Blue  
 1/3 yard 1059-99 Packed Floral - Black  
 3/8 yard 1061-67 Marble Texture - Teal  
 3/8 yard 3955- White Eclipse  
 1/2 yard 1054-01 Large Floral - White  
 1/2 yard 1056-33 Circles - Orange  
 1/2 yard 1056-77 Circles - Blue  
 1/2 yard 1055-23 Wavy Lines - Pink  
 1/2 yard 1057-52 Tiles - Purple  
 1/2 yard 1055-75 Wavy Lines - Blue  
 5/8 yard 1058-99 Floral Burst - Black  
 5/8 yard 1057-67 Tiles - Teal  
 5/8 yard 1058-01 Floral Burst - White  
 7/8 yard 1054-99 Large Floral - Black  
 3-1/8 yards 3955-Jet Black Eclipse  
 4-1/4 yards 1054-01 Large Floral - White for backing  
 72" x 82" piece of batting

## Cut Fabrics

*Note: All strips are cut across the width of the fabric (WOF) from selvaige to selvaige unless otherwise indicated.*

### From each:

1061-55 Marble Texture - Purple  
 1060-57 Texture w/Stamped Floral - Purple  
 \*Cut two 2-1/2" x WOF strips. Sub-cut twenty-eight 2-1/2" squares.

### From each:

1061-62 Marble Texture - Chartreuse, and  
 1061-22 Marble Texture - Fuchsia  
 \*Cut two 2-1/2" x WOF strips. Sub-cut twenty-four 2-1/2" squares.

### From 1061-33 Marble Texture - Orange:

\*Cut three 2-1/2" x WOF strips. Sub-cut thirty-six 2-1/2" squares.

### From 1061-77 Marble Texture - Blue:

\*Cut three 2-1/2" x WOF strips. Sub-cut forty 2-1/2" squares.

### From 1059-99 Packed Floral - Black:

\*Cut one 5-1/2" x WOF strip. Sub-cut four 5-1/2" squares.

### From 1061-67 Marble Texture - Teal:

\*Cut four 2-1/2" x WOF strips. Sub-cut sixty 2-1/2" squares.

### From 3955- White Eclipse:

\*Cut six 1-1/2" x WOF strips for border 1.

### From each:

1054-01 Large Floral - White  
 1056-33 Circles - Orange  
 1056-77 Circles - Blue  
 1057-52 Tiles - Purple  
 \*Cut two 5-1/2" x WOF strips. Sub-cut twelve 5-1/2" squares.

### From each:

1055-23 Wavy Lines - Pink  
 1055-75 Wavy Lines - Blue  
 \*Cut two 5-1/2" x WOF strips. Sub-cut eight 5-1/2" squares.

### From each:

1058-99 Floral Burst - Black  
 1058-01 Floral Burst - White  
 \*Cut three 5-1/2" x WOF strips. Sub-cut sixteen 5-1/2" squares.

### From 1057-67 Tiles - Teal:

\*Cut three 5-1/2" x WOF strips. Sub-cut twenty 5-1/2" squares.

### From 1054-99 Large Floral - Black:

\*Cut six 4-1/2" x WOF strips for border 3.

### From 3955-Jet Black Eclipse:

\*Cut twenty 3-1/2" x WOF strips. Sub-cut 240 3-1/2" squares.  
 \*Cut thirteen 1-1/2" x WOF strips: six for border 2,

seven for border 4.

\*Cut seven 2-1/2" x WOF strips for binding.

## Assemble Blocks

*Measurements include 1/4" seam allowances. Sew with right sides together unless otherwise stated. If no direction is specified, press seam toward darker fabric.*

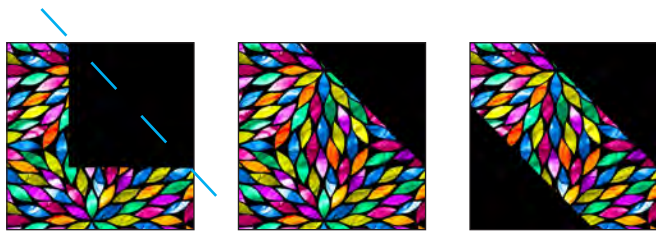
1. Refer to Table 1 for fabric placement noting that all blocks use the 3-1/2" 3955-Jet Black Eclipse squares. Group the fabric patches to be used in each block.

 <p>Make 4</p> <p>1058-99 Floral Burst – Black 1061-55 Marble Texture - Purple 1061-33 Marble Texture - Orange</p>	 <p>Make 5</p> <p>1057-67 Tiles – Teal 1061-67 Marble Texture – Teal 1061-77 Marble Texture – Blue</p>	 <p>Make 1</p> <p>1059-99 Packed Floral – Black 1061-62 Marble Texture – Chartreuse 1061-22 Marble Texture - Fuchsia</p>
 <p>Make 3</p> <p>1054-01 Large Floral – White 1061-55 Marble Texture – Purple 1061-77 Marble Texture – Blue</p>	 <p>Make 3</p> <p>1056-33 Circles – Orange 1060-57 Texture w/Stamped Floral – Purple 1061-67 Marble Texture – Teal</p>	 <p>Make 3</p> <p>1056-77 Circles – Blue 1061-67 Marble Texture – Teal 1061-62 Marble Texture – Chartreuse</p>
 <p>Make 2</p> <p>1055-23 Wavy Lines – Pink 1061-77 Marble Texture – Blue 1061-33 Marble Texture - Orange</p>	 <p>Make 4</p> <p>1058-01 Floral Burst – White 1060-57 Texture w/Stamped Floral – Purple 1061-67 Marble Texture – Teal</p>	 <p>Make 3</p> <p>1057-52 Tiles – Purple 1061-22 Marble Texture – Fuchsia 1061-33 Marble Texture - Orange</p>
 <p>Make 2</p> <p>1055-75 Wavy Lines – Blue 1061-22 Marble Texture – Fuchsia 1061-62 Marble Texture – Chartreuse</p>		

Table 1. Fabric placement on blocks.



2. Draw a diagonal line on the wrong side of the 3955-Jet Black Eclipse squares. With right sides together, place one marked Black square on a corner of one 5-1/2" square and stitch on the drawn line. Repeat with the opposite corner of the same square. Trim seam allowances to 1/4" and press open (a). In the same manner, sew two 2-1/2" squares to the same corners. Make one more unit in this colorway and two more on the second colorway for this block (b). Sew units together to make a 10-1/2" block (*figure 1*). Press the seams in one direction.



(a)



(b)

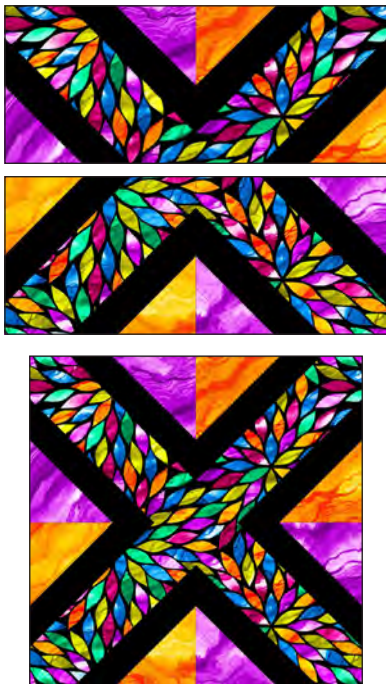


Figure 1

3. Referring to Table 1 for fabric placement, repeat step 2 to make a total of thirty 10-1/2" blocks.

## Assemble Quilt Top

4. Following the quilt photo for block placement, lay out six rows of five blocks each. Sew the blocks together in each row, then matching adjacent seams sew the rows together in order.

5. For border 1, join the six 1-1/2" 3955- White Eclipse border strips together end to end using diagonal seams. Measure the vertical length of the quilt top through the center and cut two border strips that length. Sew one strip to each side of the quilt top. Measure the width of the quilt top through the center. Cut two border strips that length and sew one to the top and one to the bottom. Press the seams toward the borders.

6. Repeat step 5 with the six 1-1/2" 3955-Jet Black Eclipse strips to make and add border 2.

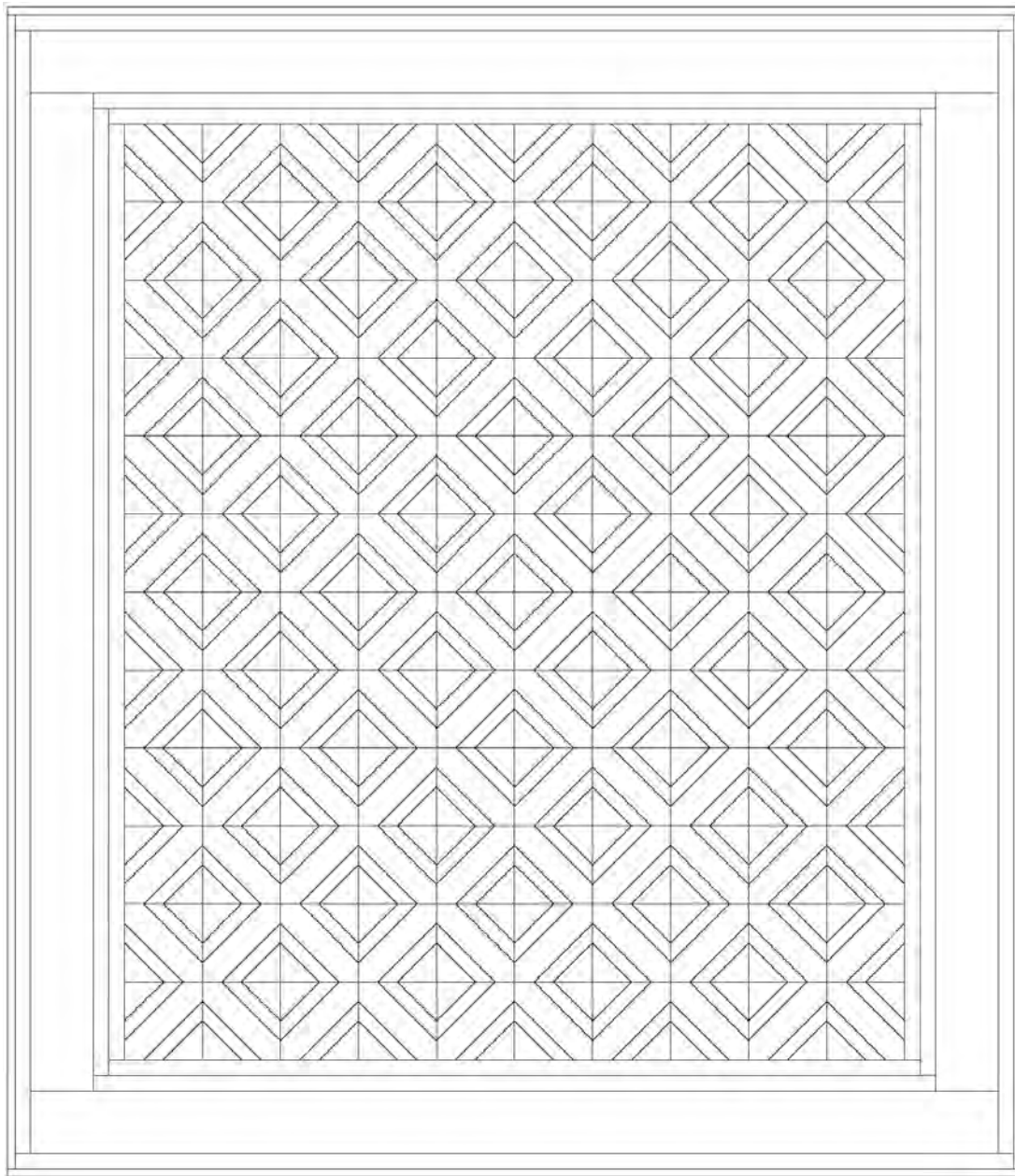
7. Repeat step 5 with the six 4-1/2" 1054-99 Large Floral - Black strips to make and add border 3.

8. Repeat step 5 with the seven 1-1/2" 3955-Jet Black Eclipse strips to make and add border 4.

## Finishing

9. Create a quilt sandwich with the batting between the quilt top and the backing. Pin or baste layers together, mark quilting design, and quilt by hand or machine. When quilting is complete, remove pins or basting, and trim batting and backing even with raw edges of the quilt top.

10. Join the seven 2-1/2" 3955-Jet Black Eclipse binding strips together end to end using a diagonal seam to make one long strip. Fold in half lengthwise and press. Sew binding to the edges of the quilt, mitering corners, and overlapping ends. Fold binding to the back of the quilt and stitch it in place by hand to finish.



Quilt Diagram

©2019 Blank Quilting Corporation

*Every effort has been made to ensure that all projects are error free. All the information is presented in good faith; however, no warranty can be given nor results guaranteed as we have no control over the execution of instructions. Therefore, we assume no responsibility for the use of this information or damages that may occur as a result. When errors are brought to our attention, we make every effort to correct and post a revision as soon as possible. Please make sure to check [www.blankquilting.net](http://www.blankquilting.net) for pattern updates prior to starting the project. We also recommend that you test the project prior to cutting for kits. Finally, all free projects are intended to remain free to you and are not for resale.*