

# COMMOTION IN THE OCEAN

by Patty Rybolt

Quilt design by Denise Russell.



Quilt size: 41" x 53"

Skill Level: Advanced Beginner

**Blank Quilting Corporation**  
49 West 37th Street ♦ New York, NY 10018  
Tel: 800-294-9495 ♦ Fax: 212-679-4578  
[www.blankquilting.net](http://www.blankquilting.net)

facebook

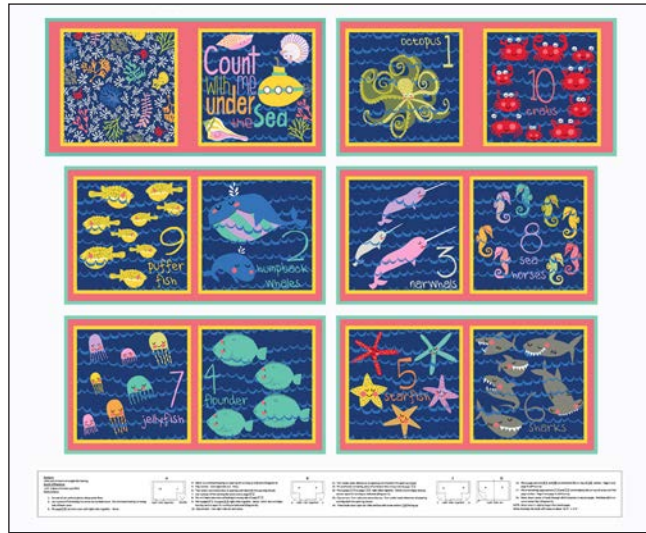
Free Project  
NOT FOR RESALE



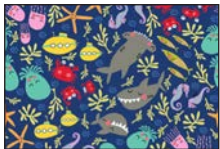
# COMMOOTION IN THE OCEAN - Fabrics in the Collection



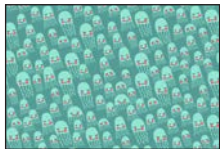
2137P-77 Sea Life Panel  
Navy



2138P-77 Sea Life Book Panel  
Navy



2125-77 Tossed Sea Life  
Navy



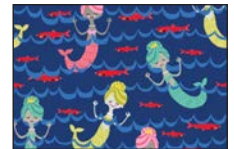
2126-67 Jelly Fish  
Aqua



2127-90 Crabs  
Lt. Gray



2128-01 Fish  
White



2129-77 Mermaids  
Navy



2130-01 Seahorses  
White



2131-01 Coral  
White



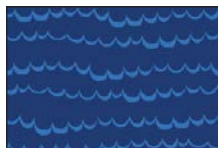
2132-70 Sharks  
Lt. Blue



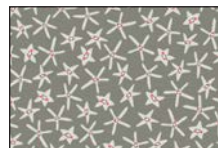
2133-77 Tossed Squid  
Navy



2134-95 Submarines  
Gray



2135-77 Waves  
Navy



2136-92 Starfish  
Med. Gray

Selected fabric from the  
Jot Dot I Collection



9570-09  
Marshmallow

Selected fabric from the  
Starlet Collection



6383  
Navy

## Materials

*Yardages and cutting instructions are based on 42" of usable fabric width.*

1/4 yard 2135-77 Waves - Navy  
 3/8 yard 9570-09 Jot Dot - Marshmallow  
 3/8 yard 2132-70 Sharks - Lt. Blue  
 3/8 yard 2136-92 Starfish - Med. Gray  
 1/2 yard 6383 Starlet - Navy  
 1/2 yard 2125-77 Tossed Sea Life - Navy  
 1/2 yard 2134-95 Submarines - Gray  
 5/8 yard 2128-01 Fish - White  
 5/8 yard 2129-77 Mermaids - Navy  
 7/8 yard 2131-01 Coral - White  
 2-7/8 yards 2130-01 Seahorses - White for backing  
 49" x 61" piece of Air Lite® Colour Me 100% Cotton  
 batting  
 Scraps black fabric for irises  
 Fusible web

## Cut Fabrics

*Note: All strips are cut across the width of the fabric (WOF) from selvage to selvage unless otherwise indicated.*

### From 2135-77 Waves – Navy:

\*Cut four 1-1/2" x WOF strips for sashing.

### From 9570-09 Jot Dot – Marshmallow:

\*Cut four 1-1/2" x WOF strips for border 1.  
 \*Cut twenty circles for eyes using template A.

### From 2132-70 Sharks - Lt. Blue:

\*Cut eight fish shapes using the template J.  
 \*Cut eight fish fin shapes using template H.

### From 2136-92 Starfish - Med. Gray:

\*Cut eight fish shapes using template G.  
 \*Cut eight fish fin shapes using template I.

### From 6383 Starlet – Navy:

\*Cut five 2-1/2" x WOF strips for binding.

### From 2125-77 Tossed Sea Life – Navy:

\*Cut twelve fish shapes using template F.  
 \*Cut twelve fish fin shapes using template D.

### From 2134-95 Submarines – Gray:

\*Cut twelve fish shapes using template C.  
 \*Cut twelve fish fin shapes using template E.

### From 2128-01 Fish – White:

\*Cut two 8-1/2" x WOF strips. Sub-cut eight 8-1/2" squares.

### From 2129-77 Mermaids – Navy:

\*Cut five 3-1/2" x WOF strips for border 2.

### From 2131-01 Coral – White:

\*Cut three 8-1/2" x WOF strips. Sub-cut twelve 8-1/2" squares.

### From scraps of black fabric:

\*Cut twenty circles for irises using template B.

## Assemble Blocks

*Measurements include 1/4" seam allowances. Sew with right sides together unless otherwise stated. If no direction is specified, press the seam toward the darker fabric.*



**Block 1 – Left Facing - Make 12.**

Fabrics:

2131-01 Coral – White  
 2125-77 Tossed Sea Life – Navy (F and D)  
 2134-95 Submarines – Gray (C and E)



**Block 2 – Right Facing - Make 8.**

Fabrics:

2128-01 Fish – White  
 2132-70 Sharks - Lt. Blue (J and H)  
 2136-92 Starfish - Med. Gray (G and I)

Table 1. Block colorway.

1. Trace the fish shapes C-F on the smooth side of the fusible web twelve times and G-J eight times. Cut them 1/8" outside the outline, then remove the center of the fusible web inside shapes C, F, G, and J, leaving about 3/8" near the edges, making them hollow (*figure 1*). Fuse the shapes to the wrong side of each of the fabrics listed in Table 1 on page 1, cut on the outline, and remove the paper backing.

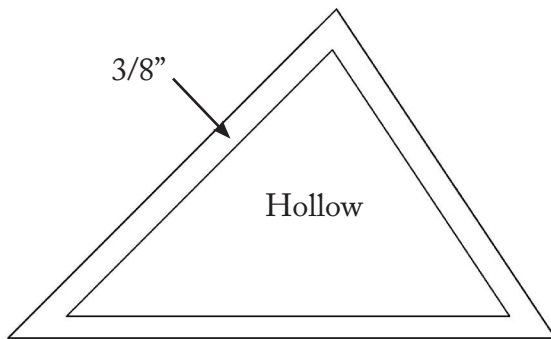


Figure 1

2. Fold and crease the 8-1/2" 2128-01 Fish – White and 2131-01 Coral – White squares in half twice. Look at Table 1 for fabric combination and placement and position the shapes on the squares using the creased folds as guidelines. Ensure there is 1/4" space between the edge of the shapes and the edge of the background squares for the seam allowance (*figure 2*). Fuse them according to the manufacturer's instructions.



Figure 2

3. Repeat Step 1 with the circle shapes A and B (no need to make them hollow). Fuse the larger circles to the wrong side of the 9570-09 Jot Dot – Marshmallow fabric and the smaller circles to the black scraps. Make twenty sets. Fuse them to each fish, referring to the quilt photo for placement (*figure 3*). Machine

appliqué all shapes using matching thread and the blanket stitch.



Make 12

Make 8

Figure 3 – Make (20) assorted 8-1/2" blocks.

## Assemble Quilt Top

4. Referring to the quilt photo for block placement, lay out four blocks in five rows. Join the blocks together in each row and press the seams in one direction.

5. To make the horizontal sashing rows, trim each of the four 1-1/2" 2135-77 Waves – Navy strips to 32-1/2" length. Matching adjacent seams, sew block rows and horizontal sashing strips together. Press the seams in one direction.

6. For border 1, sew the four 1-1/2" 9570-09 Jot Dot – Marshmallow strips together end to end using diagonal seams. Measure the vertical length of the quilt top through the center and cut two border strips that length. Sew one strip to each side of the quilt top. Measure the width of the quilt top through the center. Cut two border strips that length and sew one to the top and one to the bottom. Press the seams toward the borders.

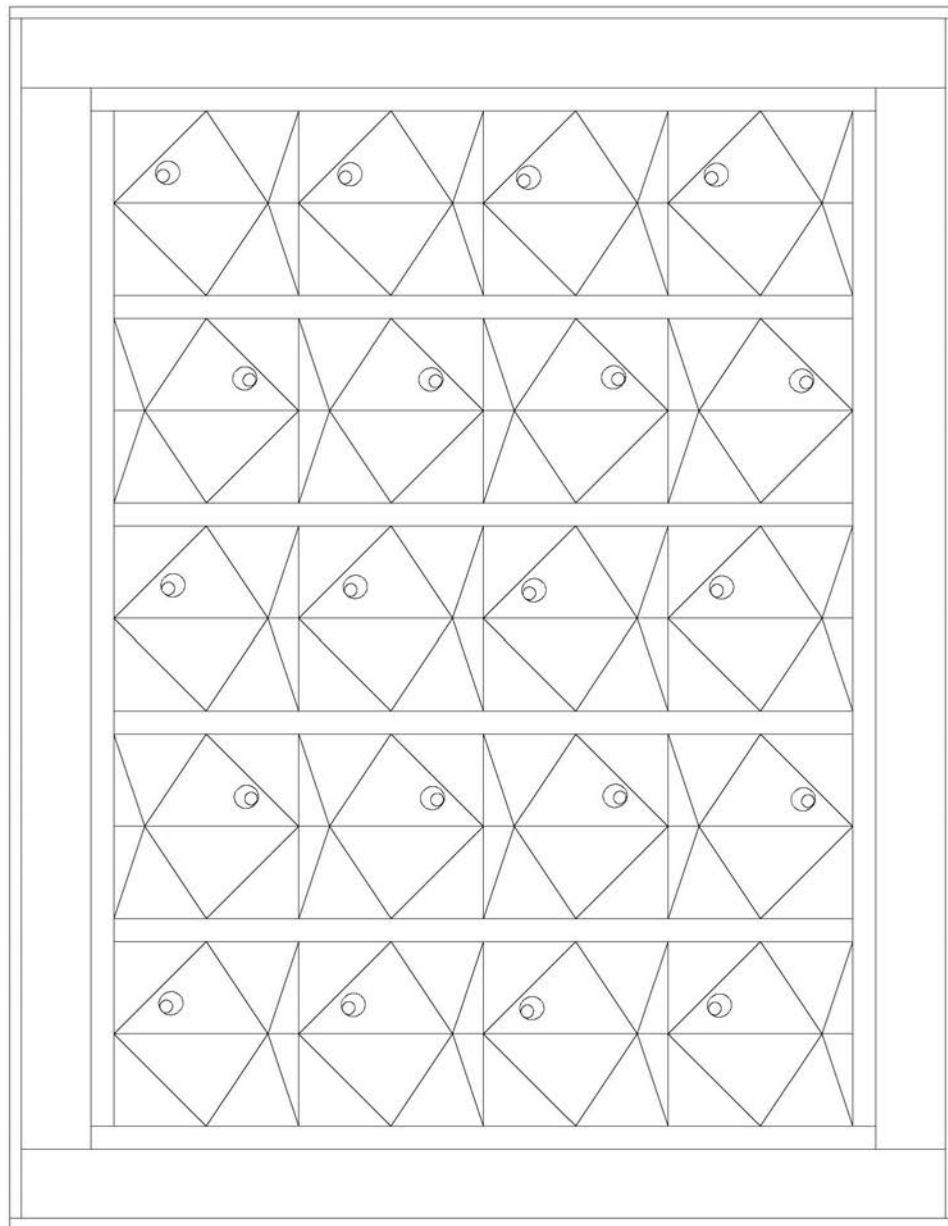
7. Repeat Step 6 with the five 3-1/2" 2129-77 Mermaids – Navy strips to make and add border 2.

## Finishing

8. Create a quilt sandwich with the batting between the quilt top and the backing. Pin or baste layers together, mark quilting design, and quilt by hand or machine. When quilting is complete, remove pins or basting, and trim batting and backing even with raw edges of the quilt top.



9. Join the five 2-1/2" 6383 Starlet – Navy binding strips together end to end using a diagonal seam to make one long strip. Fold in half lengthwise and press. Sew binding to the edges of the quilt, mitering corners, and overlapping ends. Fold binding to the back of the quilt and stitch it in place by hand to finish.



Quilt Diagram

©2021 Blank Quilting Corporation

*Every effort has been made to ensure that all projects are error free. All the information is presented in good faith; however, no warranty can be given nor results guaranteed as we have no control over the execution of instructions. Therefore, we assume no responsibility for the use of this information or damages that may occur as a result. When errors are brought to our attention, we make every effort to correct and post a revision as soon as possible. Please make sure to check [www.blankquilting.net](http://www.blankquilting.net) for pattern updates prior to starting the project. We also recommend that you test the project prior to cutting for kits. Finally, all free projects are intended to remain free to you and are not for resale.*

