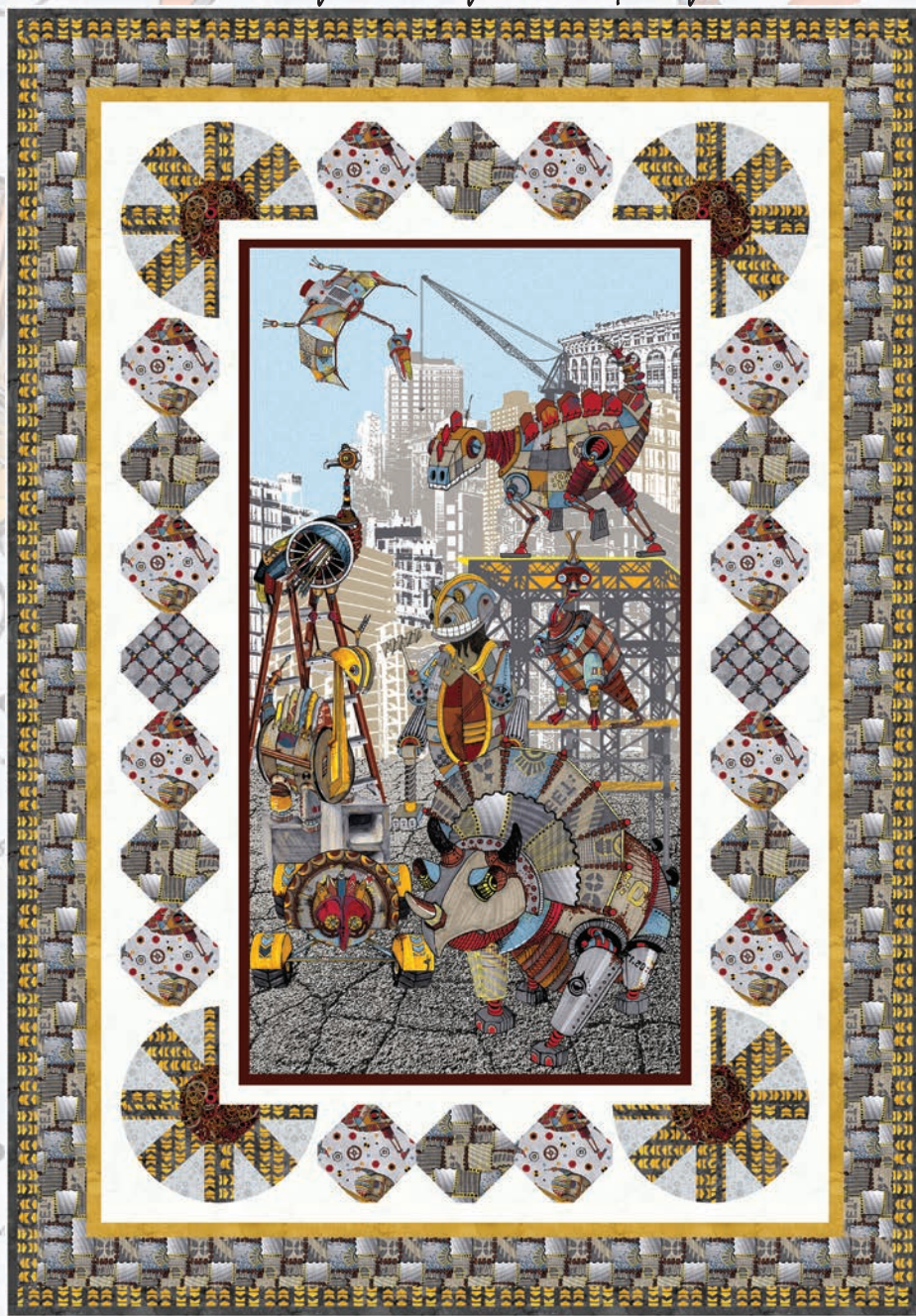


dino punk

by Holly Glaspen

Quilt design by Denise Russell.



Quilt size: 45-1/2" x 65-1/2"

Skill Level: Intermediate

Blank Quilting Corporation
49 West 37th Street ♦ New York, NY 10018
Tel: 800-294-9495 ♦ Fax: 212-679-4578
www.blankquilting.net

facebook

Free Project
NOT FOR RESALE

dino punk~ Fabrics in the Collection



1265P-90 Dino Punk Panel
Gray



1258-70 Dino Punk Blocks
Blue



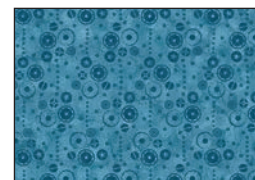
1257-90 Tossed Dino
Punks - Lt. Gray



1259-95 Tool Argyle
Gray



1260-11 Tossed
Pterodactyl - Lt. Blue



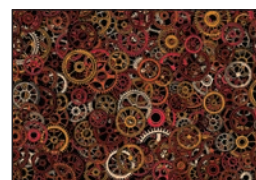
1261-70 Tonal Dot
Blue



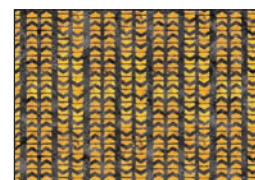
1261-90 Tonal Dot
Lt. Gray



1262-95 Patch
Gray

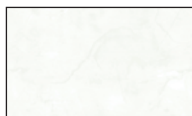


1263-39 Gears
Brown



1264-99 Tire Treads
Charcoal

Selected fabrics from the Urban Legend collection
by Tana Mueller



7101-01
White



7101-45
Gold



7101-99
Charcoal

Materials

Yardages and cutting instructions are based on 42" of usable fabric width.

1 1265P-90 Dino Punk Panel - Gray
 1/8 yard 1263-39 Gears - Brown
 1/4 yard 1259-95 Tool Argyle - Gray
 1/4 yard 7101-45 Urban Legend - Gold
 1/3 yard 1257-90 Tossed Dino Punks - Lt. Gray
 3/8 yard 1261-90 Tonal Dot - Lt. Gray
 5/8 yard 7101-99 Urban Legend - Charcoal
 2/3 yard 1264-99 Tire Treads - Charcoal
 2/3 yard 1262-95 Patch - Gray
 1-1/8 yards 7101-01 Urban Legend - White
 3-1/8 yards 1260-11 Tossed Pterodactyl - Lt. Blue for backing
 54" x 74" piece of Air Lite batting
 Tracing paper
 Fusible web
 Monofilament
 Plastic for template (optional)

Cut Fabrics

Notes:

*a. All strips are cut across the width of the fabric (WOF) from selvage to selvage unless otherwise noted. If cut across the length of the fabric (LOF), the **LOF** notation will be indicated.*

b. If the panel cannot be cut as requested due to its printing, trim it the best you can and then increase the width of the first border so that the quilt center measures 25-1/2" x 45-1/2" after the addition of border 1. There is extra fabric in the yardage of the White fabric for this eventuality.

From 1265P-90 Dino Punk Panel – Gray:

*Trim panel to 23-1/2" x 43-1/2".

From 1263-39 Gears – Brown:

*Cut one 2-1/2" x WOF strip. Sub-cut twelve 2-1/2" squares.

From 1259-95 Tool Argyle – Gray:

*Cut one 5-1/2" x WOF strip. Sub-cut two 5-1/2" squares.

From 7101-45 Urban Legend – Gold:

*Cut five 1-1/4" x WOF strips for border 4.

From 1257-90 Tossed Dino Punks - Lt. Gray:

*Cut two 5-1/2" x WOF strips. Sub-cut twelve 5-1/2" squares.

From 1261-90 Tonal Dot - Lt. Gray:

*Cut one 2-1/2" x WOF strip. Sub-cut twenty-four 1-3/4" x 2-1/2" strips (sections B2, B3).

*Cut two 4" x WOF strips. Sub-cut twenty-four 2" x 4" strips (sections A2, C2).

From 7101-99 Urban Legend – Charcoal:

*Cut six 2-1/2" x WOF strips for binding.

From 1264-99 Tire Treads – Charcoal:

*Cut one 1-3/4" x WOF strip. Sub-cut twelve 1-3/4" squares.

*Cut one 3" x WOF strip. Sub-cut twelve 2-1/2" x 3" strips (section B1).

*Cut one 3-1/4" x WOF strip. Sub-cut twenty-one 2" x 3-1/4" strips (sections A3, C3).

*Cut one 4" x WOF strip. Sub-cut twenty-four 1-1/2" x 4" strips (sections A1, C1) and three 2" x 3-1/4" strips (for a total of twenty-four strips for section A3, C3).

*Cut six 1-1/2" x WOF strips for border 6.

From 1262-95 Patch – Gray:

*Cut one 5-1/2" x WOF strip. Sub-cut six 5-1/2" squares.

*Cut five 3" x WOF strips for border 5.

From 7101-01 Urban Legend – White:

*Cut five 2-1/4" x WOF strips. Sub-cut eighty 2-1/4" squares.

*Cut two 5-1/2" x WOF strips. Sub-cut twelve 5-1/2" squares (or, twelve arcs with template).

*Cut nine 1-1/2" x WOF strips (four for border 1, five for border 3).

Assemble Blocks

Note: Measurements include 1/4" seam allowances. Sew with right sides together unless otherwise stated. If no direction is specified, press seams toward the darker fabric.

dino punk - Quilt 1

Page 2

1. Draw a diagonal line on the wrong side of the 2-1/4" 7101-01 Urban Legend – White squares. With right sides together, place one marked White square on a corner of one 5-1/2" 1262-95 Patch – Gray square and stitch on the drawn line. Repeat with the other corners of the square (*figure 1*). Trim the seam allowances to 1/4" and press open. Repeat to make six 5-1/2" patches.

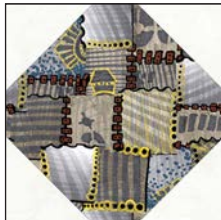


Figure 1 - Make 6.

2. Repeat step 1 with the remaining 2-1/4" 7101-01 Urban Legend – White squares, the two 5-1/2" 1259-95 Tool Argyle – Gray and the twelve 5-1/2" 1257-90 Tossed Dino Punks - Lt. Gray squares to make fourteen more 5-1/2" patches (*figure 2*).



Make 2.



Make 12.

Figure 2

3. Draw a diagonal line on the wrong side of the 1-3/4" 1264-99 Tire Treads – Charcoal squares. With right sides together, place one marked Tire Treads square on a corner of one 2-1/2" 1263-39 Gears - Brown square and stitch on the drawn line. Trim the seam allowance to 1/4" and press open. Repeat to make four 2-1/2" units (*figure 3*).



Figure 3 – Make 4.

4. Print twelve templates A, B, and C. Paper piece each section referring to Table 1 below for fabric placement, noting that fabrics are placed on the backside of the templates and seams are stitched on the printed side of the templates.

Fabric	Paper piecing section	(#) Patch size
1264-99 Tire Treads – Charcoal	A1, C1	(24) 1-1/2" x 4" strips
	A3, C3	(24) 2" x 3-1/4" strips
	B1	(12) 2-1/2" x 3" strips
1261-90 Tonal Dot - Lt. Gray	A2, C2	(24) 2" x 4" strips
	B2, B3	(24) 1-3/4" x 2-1/2" strips

Table 1. Fabric placement for each section.

Two block assembly options:

- (a) fuse stitched sections to the Gray background and machine applique' curved edge [step 4] or
- (b) curve piece Gray arcs to the stitched sections [step 6].

Stitch section A and the 2-1/2" step 3 units together (X) and press the seams in one direction. Stich sections B and C together (Y) and press the seams in the opposite direction. Join X and Y and press the seams open (*figure 4*). Trim the edges at the seam lines (**except for the curved edge** which is trimmed at the stitching line, i.e., no seam allowance at the curved edge, unless you plan on using the arcs - see step 6). Remove the paper.

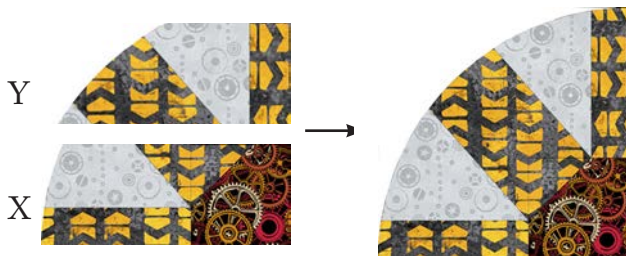


Figure 4

5. Pin one 2" strip of fusible web to the wrong side of the paper pieced units making sure it extends beyond the curved edge. Trim close to the edge so its glue will not stick to the iron plate. Fuse it according to the manufacturer's instructions, let it cool, and peel the backing paper. Align the bottom and right edges of the paper pieced unit with the same edges of the 5-1/2" 7101-01 Urban Legend - White square and fuse in place. Machine applique' the curved edge using monofilament and a small zigzag stitch. Trim the extra White fabric from the back of the units (*figure 5*).

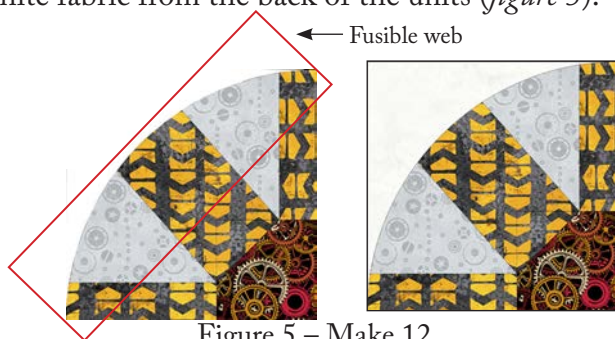


Figure 5 - Make 12.

6. Alternatively, trace the arc onto the template plastic. Cut on the outside line, place it on the wrong side of the 7101-01 Urban Legend - White fabric and trace it twelve times. Cut the arcs, pin to the step 4 paper pieced units at 1/4" intervals, and stitch. Press the seams toward arcs. Remove the paper.

Assemble Quilt Top

7. For border 1, sew four 1-1/2" 7101-01 Urban Legend - White border strips together end to end using diagonal seams. Measure the vertical length of the quilt top through the center and cut two border strips that length. Sew one strip to each side of the quilt top. Measure the width of the quilt top through the center. Cut two border strips that length and sew one to the top and one to the bottom. Press the seams toward the borders. Quilt measures 25-1/2" x 45-1/2" up to here.

8. For border 2, and referring to the quilt photo and diagram for block placement, arrange nine blocks for each side of the quilt. Sew the blocks together and sew one border strip to each side of the quilt center. Press the seam toward border 1.

9. Repeat step 8 with seven blocks and sew one border strip to the top and one to the bottom of the quilt center.

10. Repeat step 7 with the five 1-1/2" 7101-01 Urban Legend - White strips to make and add border 3.

11. Repeat step 7 with the five 1-1/4" 7101-45 Urban Legend - Gold strips to make and add border 4.

12. Repeat step 7 with the five 3" 1262-95 Patch - Gray strips to make and add border 5.

13. Repeat step 7 with the six 1-1/2" 1264-99 Tire Treads - Charcoal strips to make and add border 6.

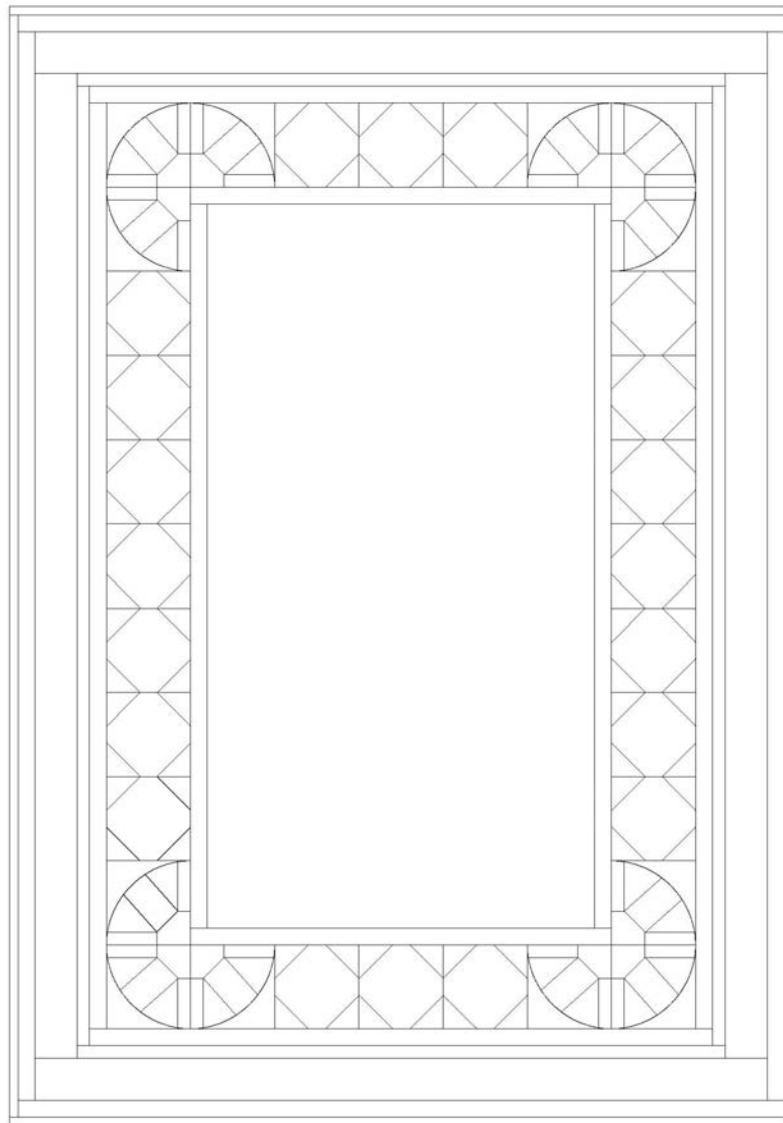
Finishing

14. Create a quilt sandwich with the batting between the quilt top and the backing. Pin or baste layers together, mark quilting design, and quilt by hand or

machine. When quilting is complete, remove pins or basting and trim batting and backing even with raw edges of the quilt top.

15. Join the six 2-1/2" 7101-99 Urban Legend - Charcoal binding strips together end to end using a diago-

nal seam to make one long strip. Fold in half lengthwise and press. Sew binding to the edges of the quilt, mitering corners, and overlapping ends. Fold binding to the back of the quilt and stitch it in place by hand to finish.

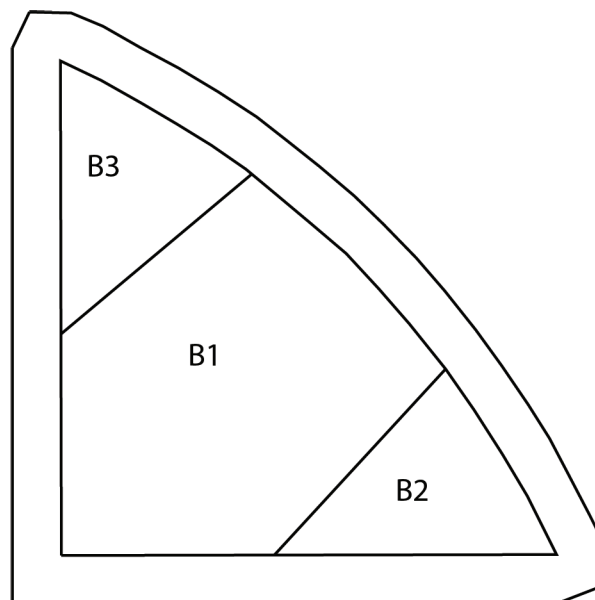
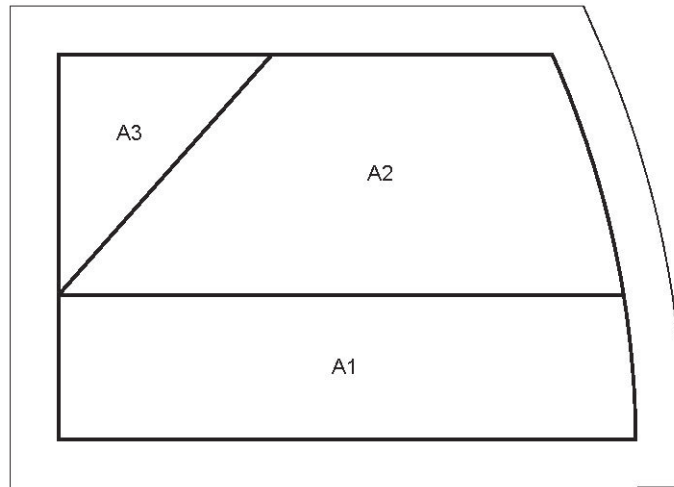


Quilt Diagram

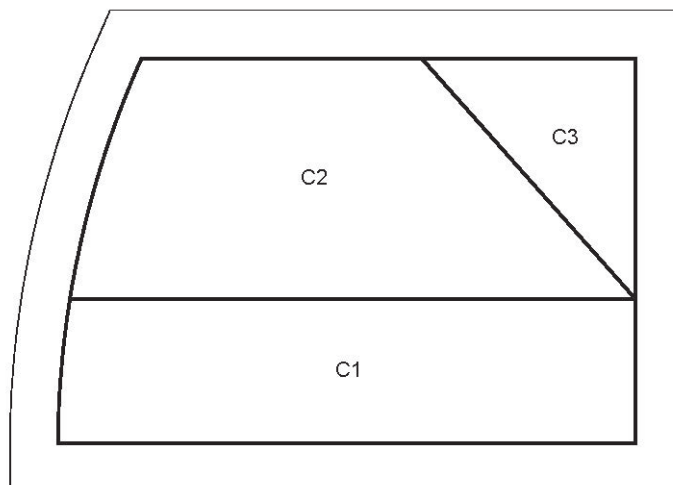
©2019 Blank Quilting Corporation

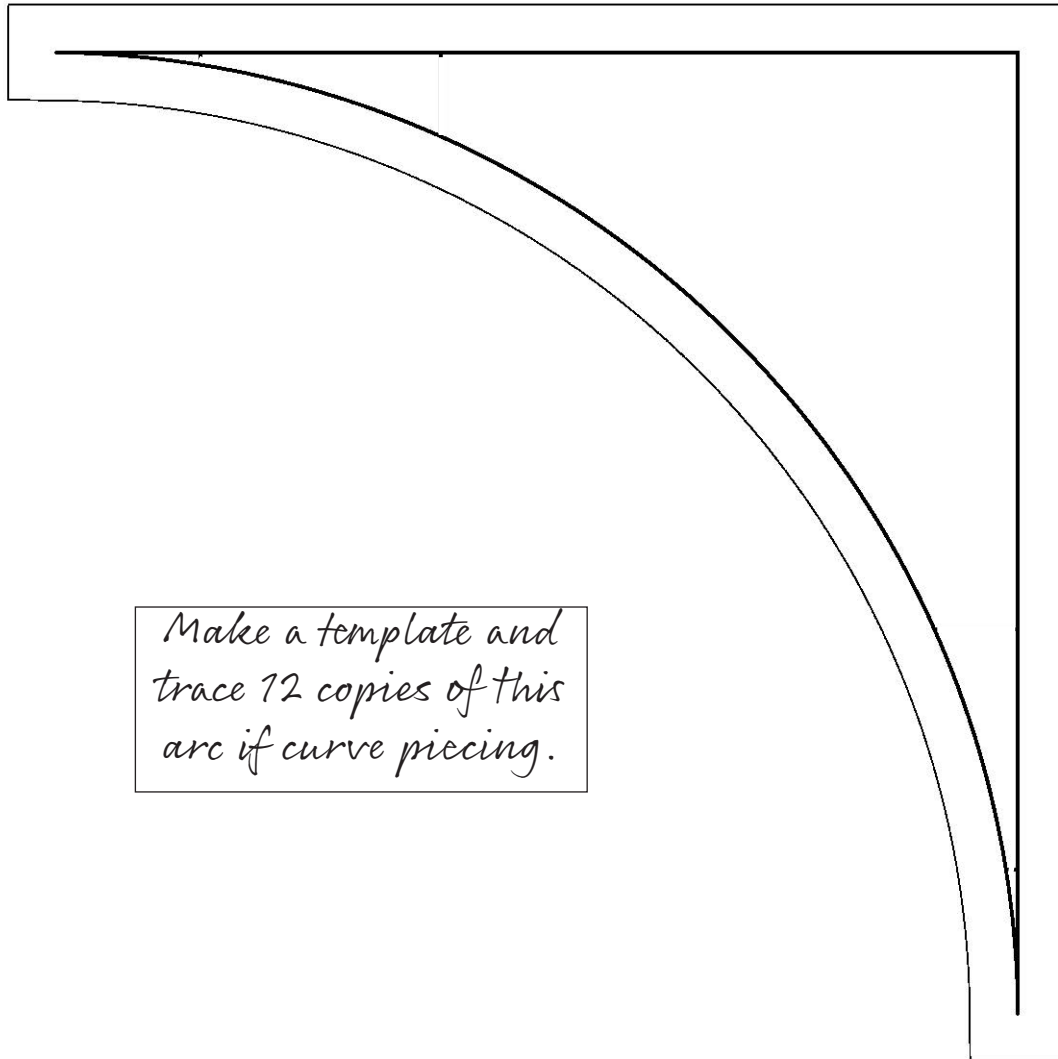
Every effort has been made to ensure that all projects are error free. All the information is presented in good faith; however, no warranty can be given nor results guaranteed as we have no control over the execution of instructions. Therefore, we assume no responsibility for the use of this information or damages that may occur as a result. When errors are brought to our attention, we make every effort to correct and post a revision as soon as possible. Please make sure to check www.blankquilting.net for pattern updates prior to starting the project. We also recommend that you test the project prior to cutting for kits. Finally, all free projects are intended to remain free to you and are not for resale.

Templates

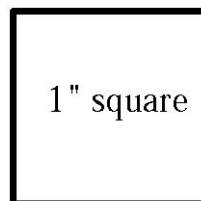


*Print 12
copies of each
template.*





*Make a template and
trace 12 copies of this
arc if curve piecing.*



1" square