



Quilt 1

Infinite Garden

by June Erica Ness



Quilt design by Denise Russell.

Quilt size: 56" x 76"

Skill Level: Intermediate

Blank Quilting Corporation
49 West 37th Street ♦ New York, NY 10018
Tel: 800-294-9495 ♦ Fax: 212-679-4578
www.blankquilting.net

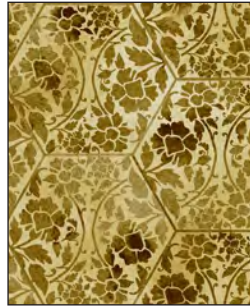
facebook

Free Project
NOT FOR RESALE

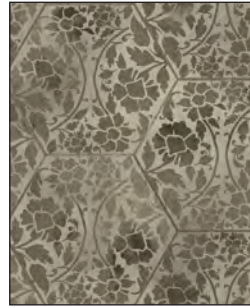
Infinite Garden - Fabrics in the Collection



1212-11 Birds in trees
Lt. Blue



1213-33 Tonal Damask
Gold



1213-36 Tonal Damask
Taupe



1214-60 Tonal Floral
Moss



1215-11 Dandelion
Lt. Blue



1211P-60 Garden Panel - Moss



1215-41 Dandelion
Ecru



1216-33 Leaf with scallop
Gold



1217-60 Tonal with
outlined floral - Moss

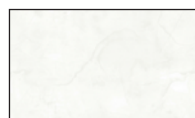


1218-30 Mini Leaf
Tan



1218-60 Mini Leaf
Moss

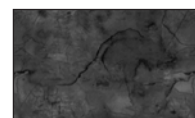
Selected fabrics from the Urban Legend Collection by Tana Mueller



7101-01 White



7101-45 Gold



7101-99 Charcoal

Materials

Yardages and cutting instructions are based on 42" of usable fabric width.

1 panel 1211P-60 Garden Panel - Moss
 1/4 yard 1218-30 Mini Leaf - Tan
 1/4 yard 1213-33 Tonal Damask - Gold
 1/3 yard 7101-99 Urban Legend - Charcoal
 3/8 yard 1212-11 Birds in Trees - Lt. Blue
 1/2 yard 1215-41 Dandelion - Ecru
 5/8 yard 7101-45 Urban Legend - Gold
 2/3 yard 1218-60 Mini Leaf - Moss
 1 yard 7101-01 Urban Legend - White
 1-1/3 yards 1213-36 Tonal Damask - Taupe
 1-3/8 yards 1215-11 Dandelion - Lt. Blue
 3-5/8 yards 1214-60 Tonal Floral - Moss for backing
 64" x 84" piece of Air Lite batting
 Plastic for template

Cut Fabrics

Note: All strips are cut across the width of the fabric (WOF) from selvage to selvage unless otherwise noted. If cut across the length of the fabric (LOF), the LOF notation will be indicated.

From 1211P-60 Garden Panel - Moss panel:

*Trim panel to 22-1/2" x 43-1/2".

From 1218-30 Mini Leaf - Tan:

*Cut one 4" x WOF strip. Sub-cut eight 4" squares.

From 1213-33 Tonal Damask - Gold:

*Cut one 4" x WOF strip. Sub-cut four 4" squares.

From 7101-99 Urban Legend - Charcoal:

*Cut three 2-5/8" x WOF strips. Sub-cut thirty-two 2-5/8" squares.

From 1212-11 Birds in Trees - Lt. Blue:

*Fussy-cut eight 4" squares using the 4" template.

From 1215-41 Dandelion - Ecru:

*Cut three 4-3/4" x WOF strips. Sub-cut twenty 4-3/4" squares.

From 7101-45 Urban Legend - Gold:

*Cut eleven 1-1/2" x WOF strips: four for border 1 and seven for border 5.

From 1218-60 Mini Leaf - Moss:

*Cut twelve 1-3/4" x WOF strips. Sub-cut **four** strips into eighty 1-3/4" squares.

From 7101-01 Urban Legend - White:

*Cut nine 2-1/8" x WOF strips. Sub-cut 160 2-1/8" squares; cut once diagonally. (A)

*Cut five 2-1/4" x WOF strips. Sub-cut eighty 2-1/4" squares.

From 1213-36 Tonal Damask - Taupe:

*Cut four 2-5/8" x WOF strips. Sub-cut forty-eight 2-5/8" squares.

*Cut seven 2" x WOF strips for border 6.

*Cut seven 2-1/2" x WOF strips for binding.

From 1215-11 Dandelion - Lt. Blue:

*Cut four 1-3/4" x WOF strips.

*Cut six 3" x WOF strips. Save two strips for border 2 - top/bottom.

*Cut three 3-1/2" x WOF strips for border 2 - sides.

*Cut seven 1-1/2" x WOF strips for border 4.

Assemble Blocks

Note: Measurements include 1/4" seam allowances. Sew with right sides together unless otherwise stated. If no direction is specified, press seams toward the darker fabric.

1. Mark a diagonal line on the wrong side of the 2-5/8" 7101-99 Urban Legend - Charcoal squares. With right sides together, place two marked Charcoal squares on opposite corners of one 4-3/4" 1215-41 Dandelion - Ecru square, making sure drawn lines are intersecting at the middle - corners of small squares will overlap. Stitch 1/4" on each side of the marked line (a), cut on the drawn line (b), and press each unit open (c). Place one more marked Charcoal square on the corner of each unit, stitch as before (d), and cut. Press the seams open (e) to make four 2-1/4" x 4" flying geese. Repeat with the remaining 2-5/8" Charcoal and seven more 4-3/4" 1215-41 Dandelion - Ecru squares to make a total of thirty-two flying geese (*figures 1, 1a*).



Figure 1 - Make 32.

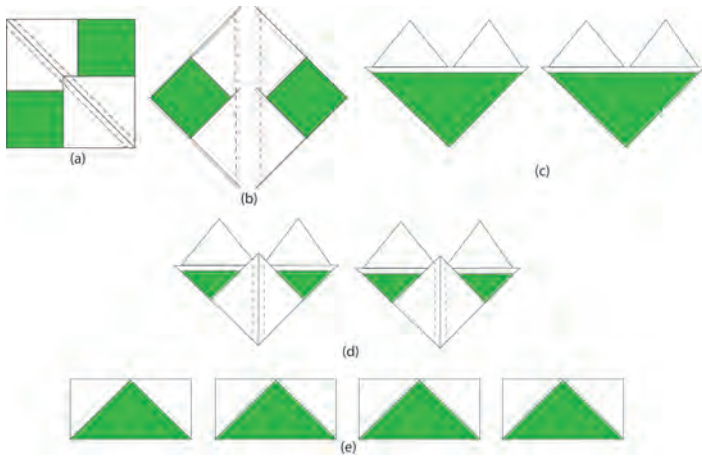


Figure 1a

2. Repeat step 1 with the remaining 4-3/4" 1215-41 Dandelion - Ecru squares and the 2-5/8" 1213-36 Tonal Damask - Taupe squares to make forty-eight 2-1/4" x 4" flying geese (*figure 2*).



Figure 2 - Make 48.

3. Sew two step 1 flying geese to opposite sides of a 4" 1212-11 Birds in Trees - Lt. Blue square (*figure 3*). Press the seams to the center. Make eight strips.



Figure 3 - Make 8.

4. Sew a 2-1/4" 7101-01 Urban Legend - White to both sides of the remaining step 1 flying geese to make sixteen strips. Press the seams away from the center. Sew one strip to the top and one to the bottom of the step 3 strips to make eight 7-1/2" stars (*figure 4*). Press the seams in one direction.



Figure 4 - Make 8.

5. Repeat steps 3 and 4 with the four 4" 1213-33 Tonal Damask - Gold and the eight 4" 1218-30 Mini Leaf - Tan squares, working with the step 2 flying geese and the remaining 2-1/4" 7101-01 Urban Legend - White squares to make twelve more 7-1/2" stars (*figure 5*).



Make 4.



Make 8.

Figure 5

6. Sew a 7101-01 Urban Legend - White triangle A to adjacent sides of one 1-3/4" 1218-60 Mini Leaf - Moss square. Press the seams away from the square (*figure 6*). Repeat with the remainder of the squares to make eighty units.



Figure 6 - Make 80.

7. Sew a 1-3/4" 1218-60 Mini Leaf - Moss and a 1-3/4" 1215-11 Dandelion - Lt. Blue strips together to make a strip set. Press the seams in one direction. Repeat to make four strip sets. Cross-cut strip sets into eighty 1-3/4" sections (*figure 7*).



Figure 7 - Make 80.

8. Sew a 1-3/4" 1218-60 Mini Leaf – Moss and a 3" 1215-11 Dandelion - Lt. Blue strips together to make a strip set. Press the seams in one direction. Repeat to make four strip sets. Cross-cut strip sets into eighty 1-3/4" sections (*figure 8*).



Figure 8 – Make 80.

9. Sew a 7101-01 Urban Legend – White triangle A to the 1218-60 Mini Leaf – Moss square side of the step 7 and step 8 units, noting the direction in which the triangles are stitched: half of the units from each step will have the triangles stitched in one direction, and half in the other (*figure 9*). Press the seams away from squares. Make forty units of each type.

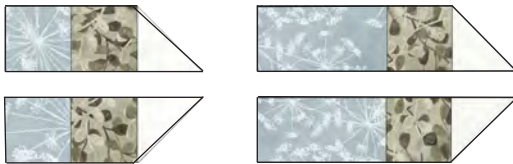
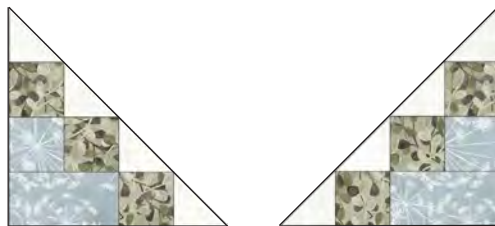


Figure 9 – Make 40 of each.

10. Sew together the steps 6 and 9 units to make eighty corner units – forty of each type (*figure 10*). Press the seams in one direction.

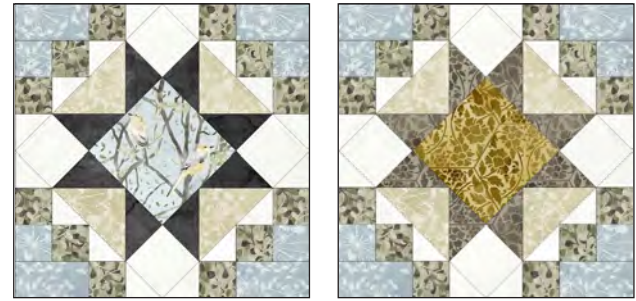


Unit X

Unit Y

Figure 10 – Make 40 of each

11. Sew two step 10 units X to opposite sides of a star. Press the seams open. Sew two units Y to the other sides of the same star (*figure 11*). Repeat with all the other stars to make twenty 10-1/2" star blocks (trim to size if necessary).



Make 8

Make 4



Make 8

Figure 11

Assemble Quilt Top

Note: *If the panel cannot be cut as requested due to its printing, trim it the best you can and then increase the width of the first border so that the quilt center measures 24-1/2" x 45-1/2" after the addition of border 1. There is extra fabric in the yardage of the Gold fabric for this eventuality.*

12. For border 1, sew together the four 1-1/2" 7101-45 Urban Legend – Gold strips end to end using diagonal seams. Stitch a border strip to each side of the panel and trim the extra length. Press seams toward the border. In the same manner, stitch one border strip to the top and another to the bottom.

13. For border 2, join the three 3-1/2" 1215-11 Dandelion - Lt. Blue strips end to end using diagonal seams. Measure the vertical length of the quilt top through the center and cut two border strips that length. Sew strips to the sides of the quilt top. Press the seams toward the border. In the same manner, measure the width of the quilt top through its center, cut two 3" 1215-11 Dandelion - Lt. Blue border strips that length, and sew one strip to the top and one to

the bottom. Press the seams toward borders. The quilt measures 30-1/2" x 50-1/2" up to here.

14. For border 3, and referring to the quilt photo for block placement, arrange five blocks for each side of the quilt. Sew blocks together and sew one border strip to each side of the quilt center. Press the seams toward the quilt center.

15. Repeat step 14 with the remaining blocks and sew one border strip to the top and one to the bottom of the quilt center.

16. For border 4, sew seven 1-1/2" 1215-11 Dandelion - Lt. Blue strips together end to end using diagonal seams. Measure the vertical length of the quilt top through the center and cut two border strips that length. Sew strips to the sides of the quilt top. Measure the width of the quilt top through its center. Cut two border strips that length and sew one to the top and one to the bottom. Press the seams toward the borders.

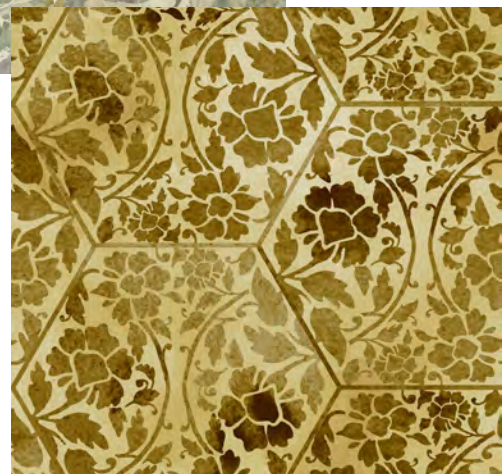
17. Repeat step 16 with the seven 1-1/2" 7101-45 Urban Legend - Gold strips to make and add border 5.

18. Repeat step 16 with the seven 2" 1213-36 Tonal Damask - Taupe strips to make and add border 6.

Finishing

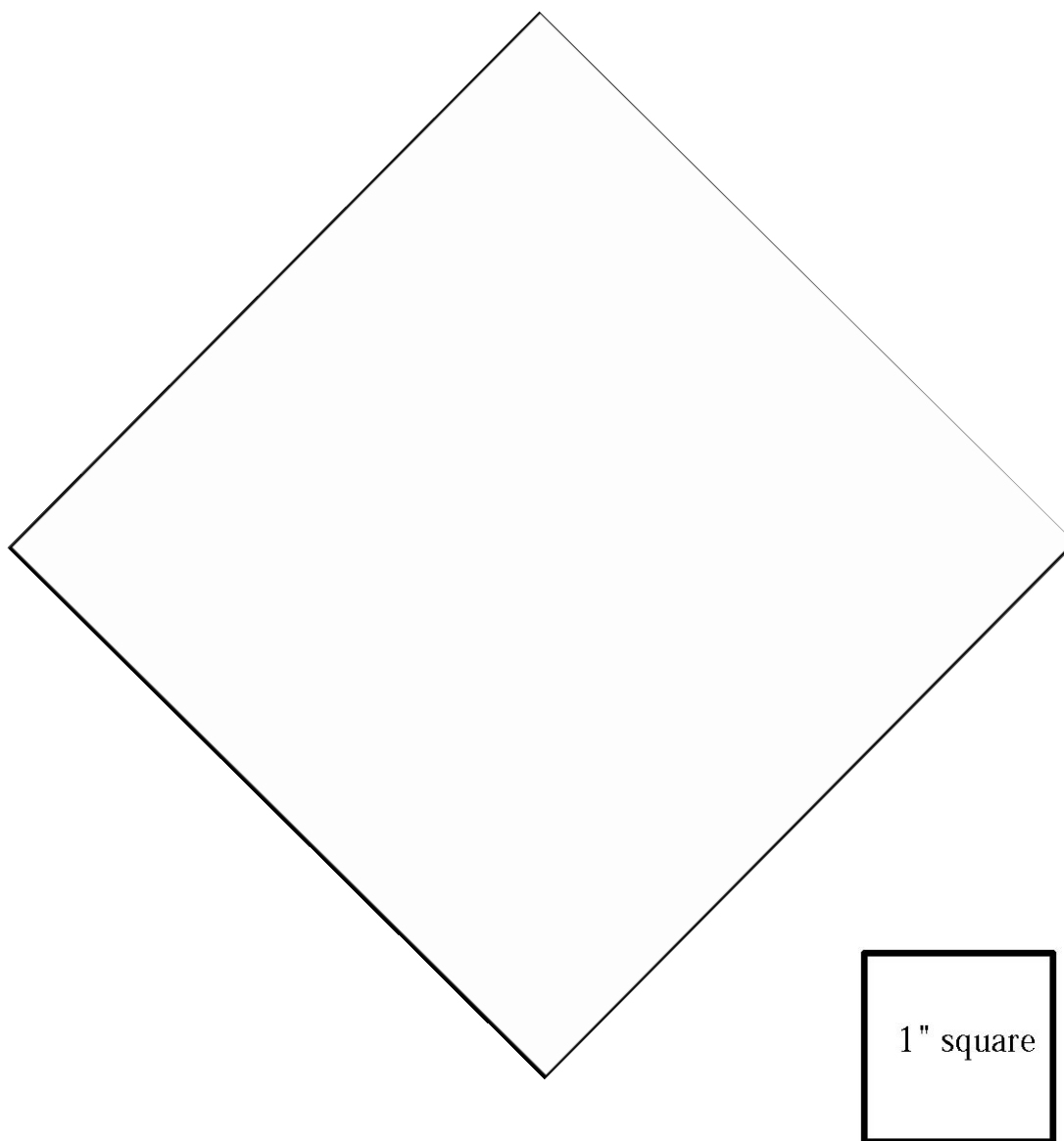
19. Create a quilt sandwich with the batting between the quilt top and the backing. Pin or baste layers together, mark quilting design, and quilt by hand or machine. When quilting is complete, remove pins or basting and trim batting and backing even with raw edges of the quilt top.

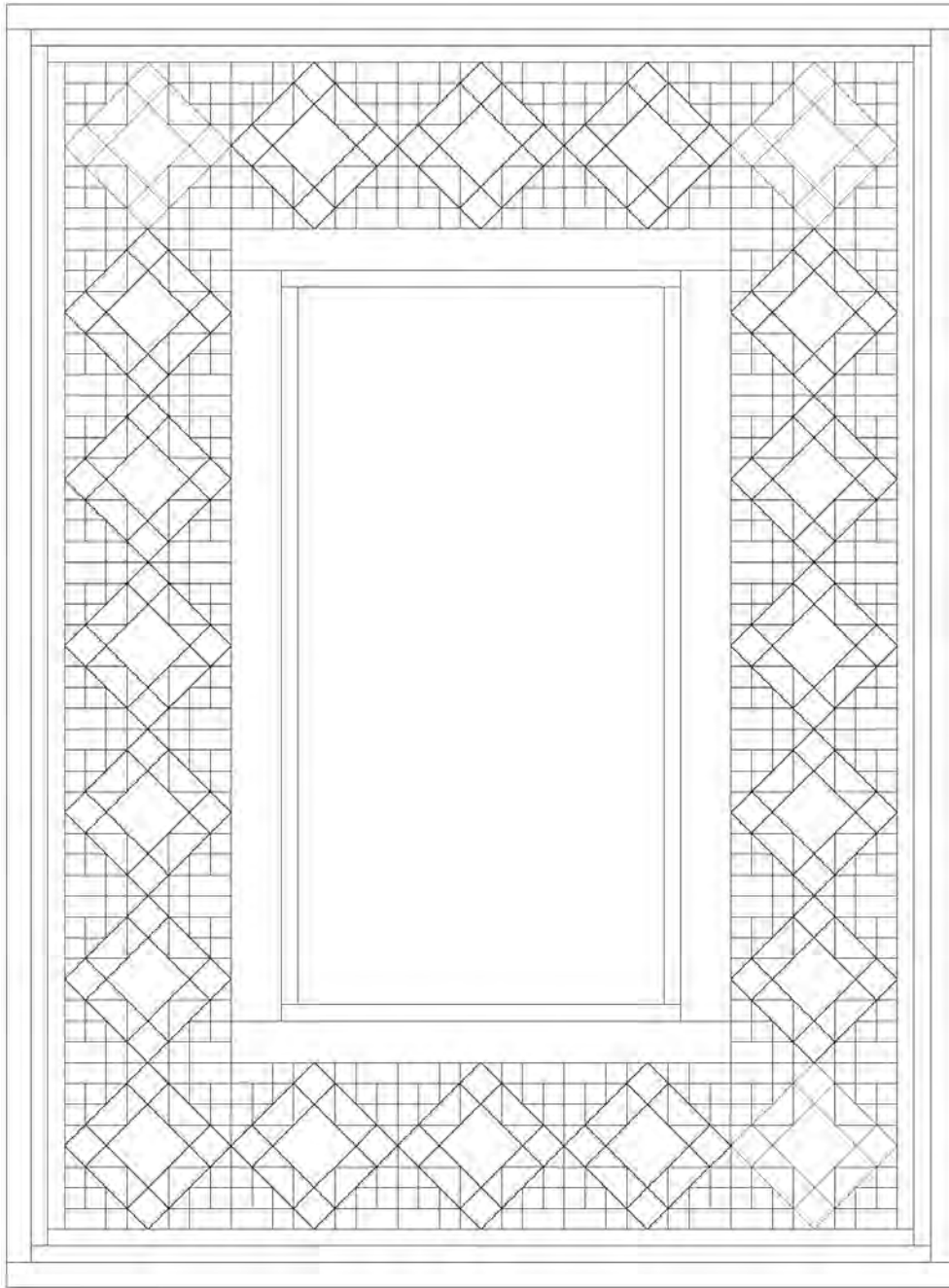
20. Join the seven 2-1/2" 1213-36 Tonal Damask - Taupe binding strips together end to end using a diagonal seam to make one long strip. Fold in half lengthwise and press. Sew binding to the edges of the quilt, mitering corners, and overlapping ends. Fold binding to the back of the quilt and stitch it in place by hand to finish.



Templates

Use the template below to fussy-cut eight 4" Birds in Trees - Lt. Blue squares. When you place it over the fabric in this position, the directional print will appear properly on the block once it is completed.





Quilt Diagram

©2019 Blank Quilting Corporation

Every effort has been made to ensure that all projects are error free. All the information is presented in good faith; however, no warranty can be given nor results guaranteed as we have no control over the execution of instructions. Therefore, we assume no responsibility for the use of this information or damages that may occur as a result. When errors are brought to our attention, we make every effort to correct and post a revision as soon as possible. Please make sure to check www.blankquilting.net for pattern updates prior to starting the project. We also recommend that you test the project prior to cutting for kits. Finally, all free projects are intended to remain free to you and are not for resale.