



Quilt 1
Revised

Magnolia Mania

by Danielle Murray

Quilt design by Denise Russell.



Quilt size: 67" x 79".

Skill Level: Advanced Beginner.

Blank Quilting Corporation
49 West 37th Street ♦ New York, NY 10018
Tel: 800-294-9495 ♦ Fax: 212-679-4578
www.blankquilting.net

facebook

Free Project
NOT FOR RESALE

Magnolia Mania - Fabrics in the Collection



9844-90 Large Magnolia
Lt. Gray



9844-99 Large Magnolia
Black



9845-90 Small Magnolia
Lt. Gray



9845-99 Small Magnolia
Black



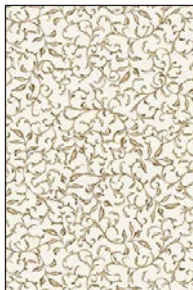
9846-66 Leaves
Green



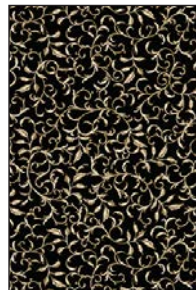
9843-99 Magnolia Blocks - Black



9850-99 Stripe - Black



9847-41 Scroll
Ivory



9847-99 Scroll
Black



9848-90 Lattice Buds
Lt. Gray

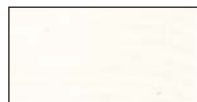


9848-99 Lattice Buds
Black



9849-41 Ikat
Ivory

Selected fabrics from the
Eclipse Solids Collection



3955 Ivory



3955 Dove



3955 Jet Black

Materials

Yardages and cutting instructions are based on 42" of usable fabric width.

1/3 yard 9844-90 Large Magnolia-Lt. Gray

3/8 yard Eclipse 3955 Ivory

1/2 yard Eclipse 3955 Jet Black

1/2 yard 9848-99 Lattice Buds-Black

5/8 yard 9843-99 Magnolia Blocks-Black

2/3 yard 9845-99 Small Magnolia-Black

2/3 yard Eclipse 3955 Dove

7/8 yard 9849-41 Ikat-Ivory

1-5/8 yards 9848-90 Lattice Buds-Lt. Gray

1-7/8 yards 9846-66 Leaves-Green

4-1/2 yards 9850-99 Stripe-Black

5-1/8 yards 9845-90 Small Magnolia-Lt. Gray for backing

75" x 87" piece of Air Lite® Colour Me 100% Cotton batting

Cut Fabrics

***Note:** All strips are cut across the width of the fabric (WOF) from selvage to selvage unless otherwise noted. If cut across the length of the fabric (LOF), the **LOF** notation will be indicated.*

From 9844-90 Large Magnolia-Lt. Gray:

*Cut two 4-1/2" x WOF strips. Sub-cut ten 4-1/2" squares.

From Eclipse 3955 Ivory:

*Cut two 1-1/2" x WOF strips. Sub-cut twelve 1-1/2" x 7" strips.

*Cut one 9" x WOF strip. Sub-cut:

- Twenty 1-1/2" x 9" strips, and
- Eight 1-1/2" x 7" strips (for a total of twenty).

From Eclipse 3955 Jet Black:

*Cut five 2-1/2" x WOF strips. Sub-cut eighty 2-1/2" squares.

From 9848-99 Lattice Buds-Black:

*Cut five 2-1/2" x WOF strips. Sub-cut eighty 2-1/2" squares.

From 9843-99 Magnolia Blocks-Black:

*Fussy-cut ten 7" squares.

From 9845-99 Small Magnolia-Black:

*Cut five 4-1/2" x WOF strips. Sub-cut forty 4-1/2" squares.

From Eclipse 3955 Dove:

*Cut eight 2-1/2" x WOF strips. Sub-cut 120 2-1/2" squares.

From 9849-41 Ikat-Ivory:

*Cut five 5-5/8" x WOF strips.

From 9848-90 Lattice Buds-Lt. Gray:

*Cut three 2-1/2" x WOF strips. Sub-cut forty 2-1/2" squares.

*Cut five 4-1/2" x WOF strips. Sub-cut forty 4-1/2" squares.

*Cut six 1-1/2" x WOF strips for border 1.

*Cut eight 1-1/2" x WOF strips for border 5.

From 9846-66 Leaves-Green:

*Cut two 3-7/8" x WOF strips.

*Cut three 5-5/8" x WOF strips.

*Cut fourteen 1-1/4" x WOF strips for borders 2 (six strips) and 4 (eight strips).

*Cut eight 2-1/2" x WOF strips for binding.

From 9850-99 Stripe-Black:

*Fussy-cut four 6-1/2" x LOF strips.

Assemble Blocks

***Note:** Measurements include 1/4" seam allowances. Sew with right sides together unless otherwise stated. If no direction is specified, press seams toward darker fabric.*

1. Sew together one 5-5/8" 9846-66 Leaves-Green and one 5-5/8" 9849-41 Ikat-Ivory strip to make a strip set. Do not press open. Repeat to make three strip sets. Cut the strip sets into forty 2-1/4" sections. Press the seams to dark fabric (*figure 1*).



Figure 1 – Make 40.

Magnolia Mania - Quilt 1

2. From the leftover step 1 strip sets, cut twenty 2-1/4" squares. Sew one square to the Ikat end of half of the step 1 strips (*figure 2*). Press the seams toward square.



Figure 2

3. Repeat step 1 with the two 3-7/8" 9846-66 Leaves-Green and two 5-5/8" 9849-41 Ikat-Ivory strips. Cut strips into twenty 2-1/4" sections (*figure 3*).

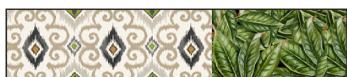


Figure 3 – Make 20.

3a. Sew two 1-1/2" x 7" Eclipse 3955 Ivory strips to opposite sides of each 7" 9843-99 Magnolia Blocks-Black square. Press the seams away from the center. Sew one 1-1/2" x 9" Eclipse 3955 Ivory strip to the top and one to the bottom of each square to make ten 9" units (*figure 3a*).



Figure 3a - Make 10 with assorted squares.

4. Noting fabric orientation, sew one step 3 strip to the left and one to the right side of the step 3a units (*figure 4*). Press the seams toward the center.



Figure 4 – Make 10.

5. Noting fabric orientation, sew one step 2 strip to the top and one to the bottom of the step 4 units (*figure 5*) to make ten 12-1/2" blocks. Press the seams toward center.



Figure 5

6. Draw a diagonal line on the wrong side of the 2-1/2" Eclipse 3955 Jet Black squares. With right sides together, place one marked Jet Black square on a corner of one 4-1/2" 9848-90 Lattice Buds-Lt. Gray square and stitch on the drawn line. Trim seam allowance to 1/4" and press open. Repeat with the adjacent corner. In the same manner, sew two 2-1/2" 9848-99 Lattice Buds-Black squares to the opposite adjacent corners of the same square. Repeat to make forty patches (*figure 6*).



Figure 6 – Make 40.

7. Repeat step 6 with the 2-1/2" Eclipse 3955 Dove squares (stitched to three corners), the 2-1/2" 9848-90 Lattice Buds-Lt. Gray squares, and the 4-1/2" 9845-99 Small Magnolia-Black squares to make forty 4-1/2" patches (*figure 7*).



Figure 7 – Make 40.

8. Noting fabric orientation, sew one 4-1/2" 9844-90 Large Magnolia-Lt. Gray square in between two step 6 patches (*figure 8, next page*). Press the seams toward center. Repeat to make ten strips.



Figure 8 – Make 10.

9. Noting fabric orientation, sew one step 6 patch in between two step 7 patches (*figure 9*). Press the seams away from center. Repeat to make twenty strips.



Figure 9 – Make 20.

10. Sew a step 9 strip to the top and one to the bottom of a step 8 strip (*figure 10*). Press the seams open. Repeat to complete ten 12-1/2" blocks.



Figure 10

Assemble Quilt Top

11. Referring to the quilt photo for block placement, lay out four blocks in five rows and join the blocks together in each row. Press the seams in one direction.

12. Matching adjacent seams, sew block rows together. Press seams in one direction.

13. For border 1, sew six 1-1/2" 9848-90 Lattice Buds-Lt. Gray strips together end to end using diagonal seams. Measure the vertical length of the quilt top through the center and cut two border strips that length. Sew strips to the sides of the quilt top. Measure the width of the quilt top through its center. Cut two border strips that length and sew one to the top and one to the bottom. Press seams toward borders.

14. Repeat step 13 with the six 1-1/4" 9846-66 Leaves-Green strips to make and add border 2.

15. For border 3, mark the quilt center along the sides, top, and bottom. Mark the center of each 6-1/2" 9850-99 Stripe-Black border strip. Matching the centers, sew each border strip in place beginning and ending exactly 1/4" from the corners. DO NOT trim the extra length.

16. To miter the borders, fold one corner of the quilt on a 45° angle so that the border strips are directly on top of one another and the seams nest together. Place your rotary ruler on the fold of the quilt so that the long edge is against the fold and the 45° line is on the side of the seam. Draw a line from the corner of the quilt top to the outside edge of the border. Pin the borders together. Position your needle on the inside corner where the border meets the quilt. Stitch directly on the line you have drawn to the outside edge of the border. Trim the excess fabric leaving a 1/4" seam allowance. Press. Repeat the process for the remaining three corners of the quilt.

17. Repeat step 13 with the eight 1-1/4" 9846-66 Leaves-Green strips to make and add border 4

18. Repeat step 13 with the eight 1-1/2" 9848-90 Lattice Buds-Lt. Gray strips to make and add border 5.

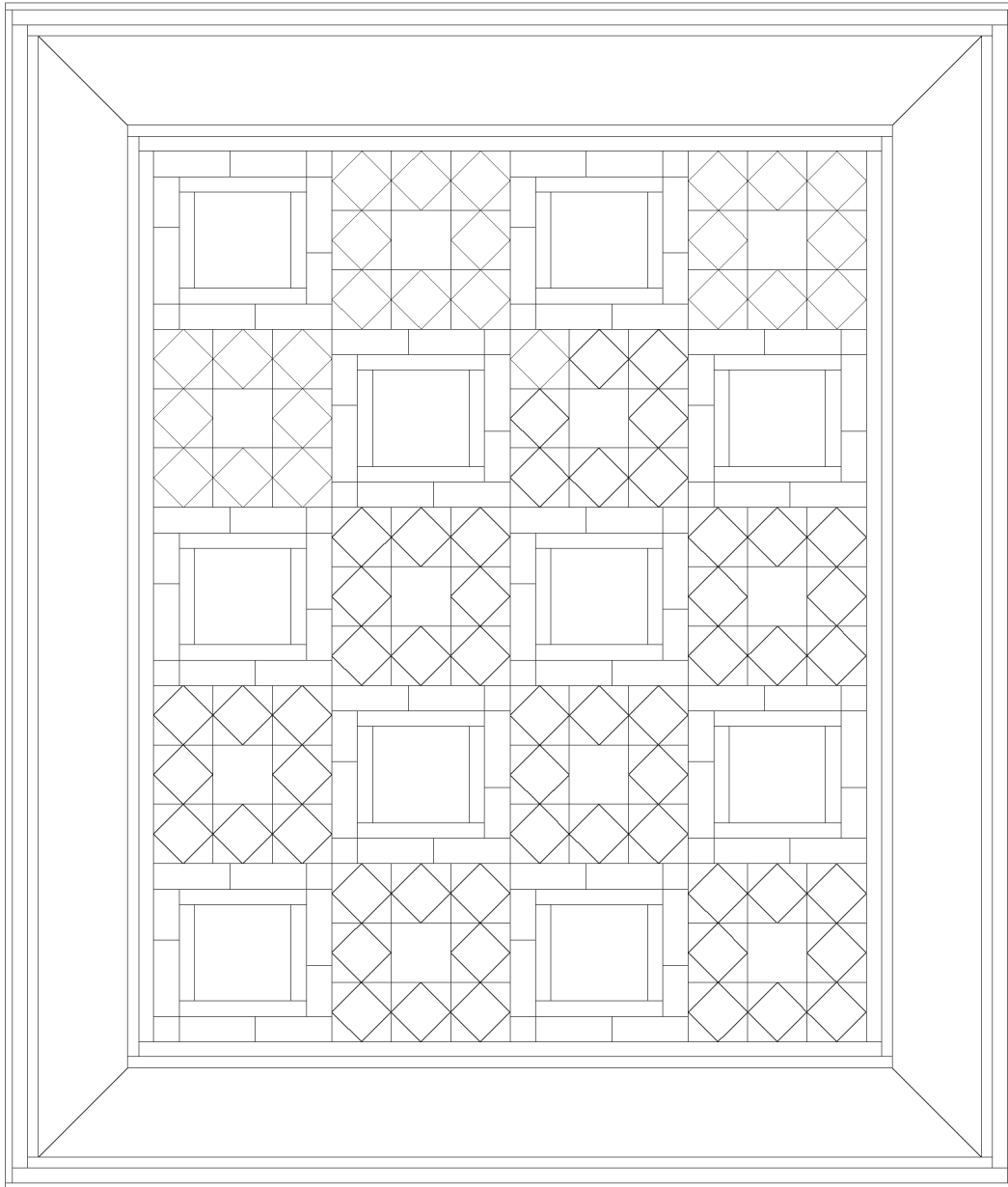
Finishing

19. Create a quilt sandwich with the batting between the quilt top and the backing. Pin or baste layers together, mark quilting design, and quilt by hand or machine. When quilting is complete, remove pins or basting, and trim batting and backing even with raw edges of the quilt top.

20. Join the eight 2-1/2" 9846-66 Leaves-Green binding strips together end to end using a diagonal seam to make one long strip. Fold in half lengthwise and press. Sew binding to the edges of the quilt, mitering corners, and overlapping ends. Fold binding to the back of the quilt and stitch it in place by hand to finish.

Magnolia Mania - Quilt 1

Page 4



Quilt Diagram

©2019 Blank Quilting Corporation

Every effort has been made to ensure that all projects are error free. All the information is presented in good faith; however, no warranty can be given nor results guaranteed as we have no control over the execution of instructions. Therefore, we assume no responsibility for the use of this information or damages that may occur as a result. When errors are brought to our attention, we make every effort to correct and post a revision as soon as possible. Please make sure to check www.blankquilting.net for pattern updates prior to starting the project. We also recommend that you test the project prior to cutting for kits. Finally, all free projects are intended to remain free to you and are not for resale.