



Quilt 1

Nature Trail

by Nutshell Designs



Quilt design by Denise Russell.

Quilt size: 66" x 56"

Skill Level: Intermediate

Blank Quilting Corporation
49 West 37th Street ♦ New York, NY 10018
Tel: 800-294-9495 ♦ Fax: 212-679-4578
www.blankquilting.net

facebook

Free Project
NOT FOR RESALE

Nature Trail - Fabrics in the Collection



1232-39 Blocks - Brown



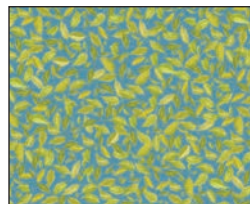
1243P-66 36" Panel - Green



1233-36 Tossed Animals
Taupe



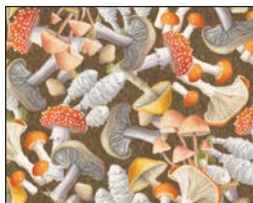
1234-66 Scenic Forest
Green



1235-60 Leaves
Lt. Green



1236-60 Bugs
Lt. Green



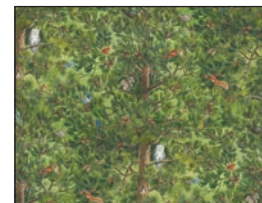
1237-39 Mushrooms
Brown



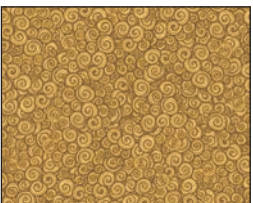
1238-30 Mushrooms
and Bugs - Tan



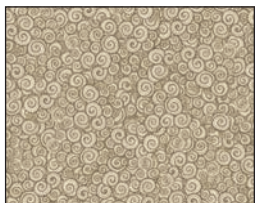
1239-36 Snails
Taupe



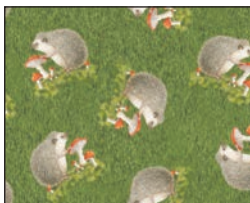
1240-66 Trees with Birds
and Animals - Green



1241-30 Scroll
Gold



1241-32 Scroll
Lt. Brown



1242-66 Hedgehog
Green

Selected fabric from the Urban Legend Collection by Tana Mueller



7101-35 Fawn



7101-41 Ivory



7101-60 Chartreuse



7101-65 Olive

Nature Trail - Quilt 1

Page 1

Materials

Yardages and cutting instructions are based on 42" of usable fabric width.

1 panel 1243P-66 Nature Trail Panel - Green
1/3 yard 7101-35 Urban Legend - Fawn
1/3 yard 1239-36 Snails - Taupe
1/3 yard 1241-30 Scroll - Gold
1/3 yard 7101-60 Urban Legend - Chartreuse
1/3 yard 1235-60 Leaves - Lt. Green
1/3 yard 1236-60 Bugs - Lt. Green
5/8 yard 1237-39 Mushrooms - Brown
2/3 yard 7101-41 Urban Legend - Ivory
7/8 yard 1238-30 Mushrooms and Bugs - Tan
7/8 yard 7101-65 Urban Legend - Olive
3-5/8 yards 1234-66 Scenic Forest - Green for backing
74" x 64" piece of Air Lite batting

Cut Fabrics

Note: All strips are cut across the width of the fabric (WOF) from selvage to selvage unless otherwise noted. If cut across the length of the fabric (LOF), the LOF notation will be indicated.

From 1243P-66 Nature Trail Panel - Green:

*Trim panel into three pieces: two 11-1/2" x 33-1/2" and one 18-1/2" x 33-1/2".

From 7101-35 Urban Legend - Fawn:

*Cut one 6-3/4" x WOF strip. Sub-cut five 6-3/4" squares.

From 1239-36 Snails - Taupe:

*Cut three 1-3/4" x WOF strips.

From 1241-30 Scroll - Gold:

*Cut six 1-1/4" x WOF strips for border 4.

From 7101-60 Urban Legend - Chartreuse:

*Cut six 1-1/4" x WOF strips for border 6.

From 1235-60 Leaves - Lt. Green:

*Cut six 1-1/2" x WOF strips for border 7.

From 1236-60 Bugs - Lt. Green:

*Cut one 6-3/4" x WOF strip. Sub-cut five 6-3/4" squares.

From 1237-39 Mushrooms - Brown:

*Cut six 2-1/2" x WOF strips for border 5.

From 7101-41 Urban Legend - Ivory:

*Cut two 2" x WOF strips for sashing.

*Cut ten 1-1/2" x WOF strips: four for border 1 and six for border 3.

From 1238-30 Mushrooms and Bugs - Tan:

*Cut seven 1-3/4" x WOF strips.

*Cut two 6-3/4" x WOF strips. Sub-cut ten 6-3/4" squares.

From 7101-65 Urban Legend - Olive:

*Cut four 1-3/4" x WOF strips.

*Cut seven 2-1/2" x WOF strips for binding.

Assemble Blocks

Note: Measurements include 1/4" seam allowances. Sew with right sides together unless otherwise stated. If no direction is specified, press seams toward the darker fabric.

1. Sew together the long edges of one 1-3/4" 1238-30 Mushrooms and Bugs - Tan strip and one 1-3/4" 1239-36 Snails - Taupe strip to make a strip set. Press the seams to the dark fabric. Repeat to make three strip sets. Cross-cut the strip sets into sixty-eight 1-3/4" sections (*figure 1*).



Figure 1 - Make 68.

2. Repeat step 1 with the remaining 1-3/4" 1238-30 Mushrooms and Bugs - Tan strips and the four 1-3/4" 7101-65 Urban Legend - Olive strips to make four strip sets. Cross-cut these strips sets into seventy-six 1-3/4" sections (*figure 2*).

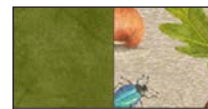
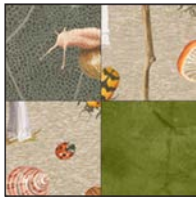


Figure 2 - Make 76.

3. Using the step 1 and step 2 sections, sew them two by two as shown (*figure 3, next page*) to make sixty-eight 4-patches of type W and four 4-patches of type X. Press the seams open.



W - Make 68.

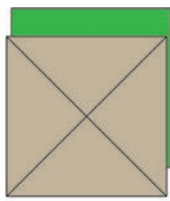


X - Make 4.

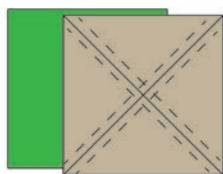
Figure 3

4. Mark two diagonal lines on the wrong side of the 6-3/4" 7101-35 Urban Legend - Fawn squares (a). Layer a marked Fawn square atop a 6-3/4" 1238-30 Mushrooms and Bugs - Tan square. Stitch 1/4" on each side of the marked lines (b), cut vertically and horizontally to make four equal squares (c), then cut each square on the drawn lines to make eight half-square triangles (d). Repeat with the remaining Fawn and Bugs squares to make a total of thirty-four 3" half-square triangles (HST). Press open and trim dog ears.

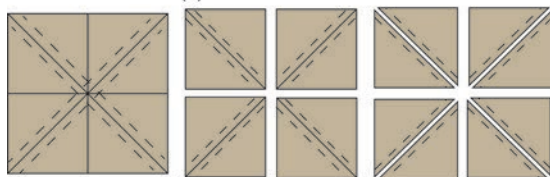
Repeat this step with the 6-3/4" 1236-60 Bugs - Lt. Green and 1238-30 Mushrooms and Bugs - Tan squares to make thirty-eight 3" HST (figure 4).



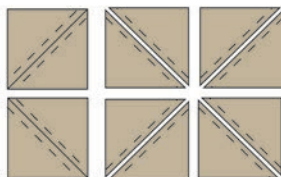
(a)



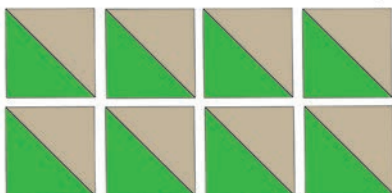
(b)



(c)



(d)



Y - Make 34.



Z - Make 38.

Figure 4

5. Using the step 3 and step 4 units, make thirty-four 5-1/2" WYZ blocks and two 5-1/2" XZ blocks (figure 5). Press the seams open.



WYZ - Make 34.



XZ - Make 2.

Figure 5

Assemble Quilt Top

6. Referring to the quilt photo, lay out the three panel rectangles in order. Sew two 2" 7101-41 Urban Legend - Ivory sashing strips in between the three rectangles and trim the extra length. The quilt center measures 43-1/2" x 33-1/2" up to here.

7. For border 1, sew four 1-1/2" 7101-41 Urban Legend - Ivory strips together end to end using diagonal seams. Measure the vertical length of the quilt top through the center and cut two border strips that length. Sew strips to the sides of the quilt top. Measure the width of the quilt top through its center. Cut two border strips that length and sew one to the top and one to the bottom. Press the seams toward the borders. The quilt measures 45-1/2" x 35-1/2" up to here.

8. For border 2, and referring to the quilt photo for block placement and orientation, arrange seven step 5 WYZ blocks for each side of the quilt. Sew blocks together and sew one border strip to each side of the quilt center. Press the seams toward the quilt center.

9. Repeat step 8 with the remaining blocks (ten WYZ blocks and one XZ block for each strip) and sew one border strip to the top and one to the bottom of the quilt center.

10. Repeat step 7 with the six 1-1/2" 7101-41 Urban Legend - Ivory strips to make and add border 3.

11. Repeat step 7 with the six 1-1/4" 1241-30 Scroll – Gold strips to make and add border 4.

12. Repeat step 7 with the six 2-1/2" 1237-39 Mushrooms – Brown strips to make and add border 5.

13. Repeat step 7 with the six 1-1/4" 7101-60 Urban Legend – Chartreuse strips to make and add border 6.

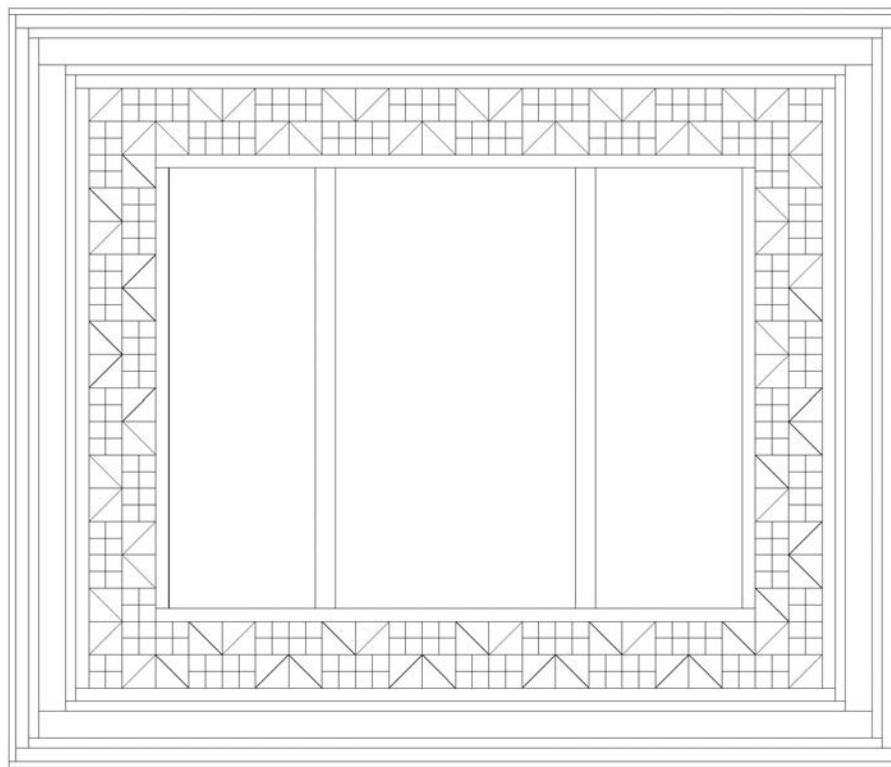
14. Repeat step 7 with the six 1-1/2" 1235-60 Leaves – Lt. Green strips to make and add border 7.

Finishing

15. Create a quilt sandwich with the batting between the quilt top and the backing. Pin or baste layers

together, mark quilting design, and quilt by hand or machine. When quilting is complete, remove pins or basting and trim batting and backing even with raw edges of the quilt top.

16. Join the seven 2-1/2" 7101-65 Urban Legend - Olive binding strips together end to end using a diagonal seam to make one long strip. Fold in half lengthwise and press. Sew binding to the edges of the quilt, mitering corners, and overlapping ends. Fold binding to the back of the quilt and stitch it in place by hand to finish.



Quilt Diagram

©2020 Blank Quilting Corporation

Every effort has been made to ensure that all projects are error free. All the information is presented in good faith; however, no warranty can be given nor results guaranteed as we have no control over the execution of instructions. Therefore, we assume no responsibility for the use of this information or damages that may occur as a result. When errors are brought to our attention, we make every effort to correct and post a revision as soon as possible. Please make sure to check www.blankquilting.net for pattern updates prior to starting the project. We also recommend that you test the project prior to cutting for kits. Finally, all free projects are intended to remain free to you and are not for resale.