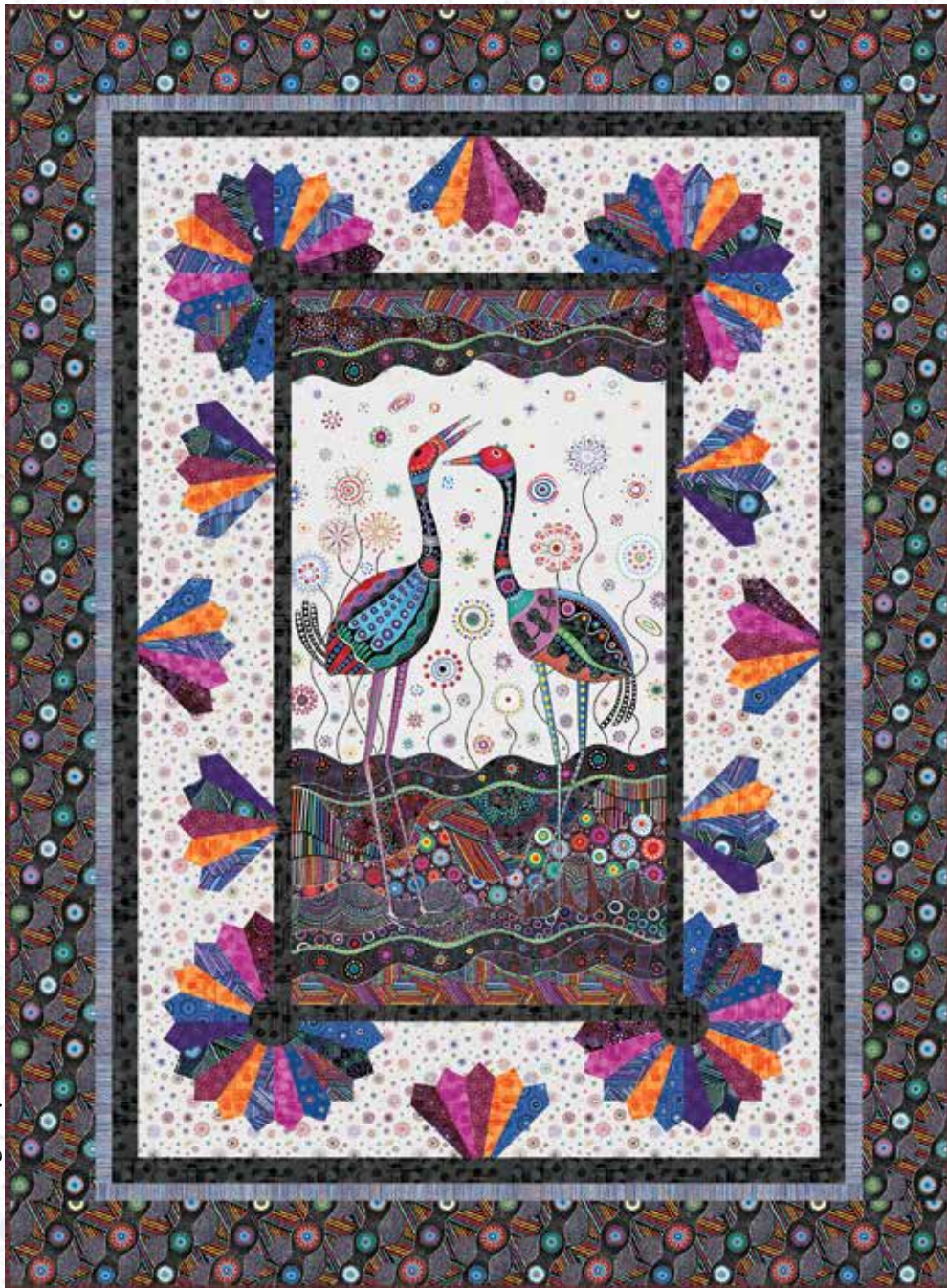


A Free Project Sheet
NOT FOR RESALE

Origins

Quilt 1



Quilt Design by Heidi Pridemore

Skill Level: Advanced Beginner



facebook

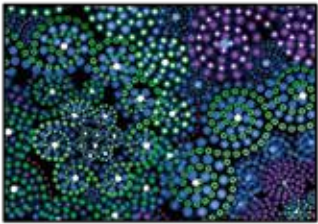
Finished Quilt Size: 55" x 75"
49 West 37th Street, 14th floor, New York, NY 10018
Toll Free: 800-294-9495
fax: 212-679-4578
www.blankquilting.net

Please check our website for pattern updates before starting this project.

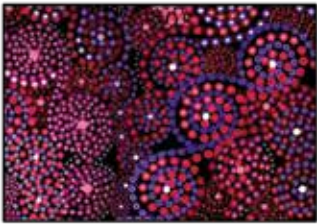
ORIGINS

Quilt 1

Fabrics in the Origins Collection



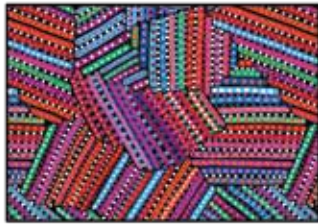
Large Swirls - Blue/Green
1204-75



Large Swirls - Red/Purple
1204-85



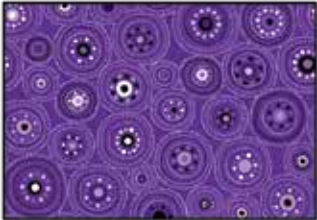
Matchsticks - Blue
1205-70



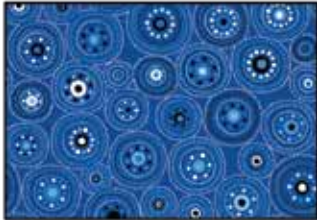
Matchsticks - Red
1205-88



Stacked Dots - White
1206-01



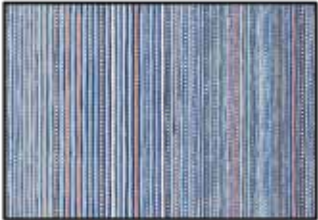
Stacked Dots - Purple
1206-55



Stacked Dots - Blue
1206-77



Stripe - Red
1207-88



Stripe - Gray
1207-90



Spaced Dots - Blue
1208-77



Spaced Dots - Light Gray
1208-90



Crane Panel - Light Gray
1203P-90



Wavy Bias Stripe - Blue
1209-77



Wavy Bias Stripe - Black
1209-99

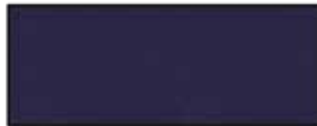
Select Fabrics from the Starlet, Eclipse & Jot Dot Collections



Starlet
Berry
6383-Berry



Starlet
Purple
6383-Purple



Eclipse
Navy
3955-Navy



Jot Dot
Fuchsia
9570-22



Jot Dot
Orange
9570-33



Jot Dot
Black
9570-99

Materials

1 panel	Crane Panel - Light Gray (A)	1203P-90
1 yard	Jot Dot Basics - Black (B)	9570-99
1 3/8 yards	Spaced Dots - Light Gray (C)	1208-90
1/4 yard	Stacked Dots - Blue (D)	1206-77
1/4 yard	Large Swirls - Blue/Green (E)	1204-75
1/4 yard	Matchsticks - Red (F)	1205-88
1/4 yard	Spaced Dots - Blue (G)	1208-77
1/4 yard	Jot Dot Basics - Fuchsia (H)	9570-22
1/3 yard	Matchsticks - Blue (I)	1205-70
1/3 yard	Jot Dot Basics - Orange (J)	9570-33
1/4 yard	Large Swirls - Red/Purple (K)	1204-85
1/4 yard	Wavy Bias Stripe - Blue (L)	1209-77
1/4 yard	Starlet - Purple (M)	6383-Purple
3/8 yard	Stripe - Gray (N)	1207-90
2 yards	Wavy Bias Stripe - Black (O)	1209-99
5/8 yard	Stripe - Red (P)	1207-88*
1/4 yard	Starlet - Berry (Q)	6383-Berry
3 1/2 yards	Stacked Dots - White (Backing)	1206-01

*Includes binding

Cutting Instructions

Please note: all strips are cut across the width of fabric (WOF) from selvage to selvage edge unless otherwise noted.

From the Crane Panel - Light Gray (A):

- Fussy cut (1) 22 1/2" x 42 1/2" rectangle, centered on the crane panel.

From the Jot Dot Basics - Black (B), cut:

- (2) 2" x 42 1/2" WOF strips, piece as needed.
- (2) 2" x 25 1/2" WOF strips.
- (3) 2" x WOF strips. Sew the strips together end to end with diagonal seams and cut (2) 2" x 60 1/2" strips.
- (3) 2" x WOF strips. Sew the strips together end to end with diagonal seams and cut (2) 2" x 43 1/2" strips.
- (4) Circles.

From the Spaced Dots - Light Gray (C), cut:

- (3) 8 1/2" x WOF strips. Sew the strips together end to end with diagonal seams and cut (2) 8 1/2" x 44 1/2" strips.
- (2) 8 1/2" x 40 1/2" WOF strips.

From the Stacked Dots - Blue (D), cut:

- (12) Blades.

From the Large Swirls - Blue/Green (E), cut:

- (4) Blades.

From the Matchsticks - Red (F), cut:

- (4) Blades.

From the Spaced Dots - Blue (G), cut:

- (4) Blades.

From the Jot Dot Basics - Fuchsia (H), cut:

- (12) Blades.

From the Matchsticks - Blue (I), cut:

- (14) Blades.

From the Jot Dot Basics - Orange (J), cut:

- (16) Blades.

From the Large Swirls - Red/Purple (K), cut:

- (8) Blades.

From the Wavy Bias Stripe - Blue (L), cut:

- (8) Blades.

From the Starlet - Purple (M), cut:

- (8) Blades.

From the Stripe - Gray (N), cut:

- (4) 1 1/2" x WOF strips. Sew the strips together end to end with diagonal seams and cut (2) 1 1/2" x 63 1/2" strips.
- (3) 1 1/2" x WOF strips. Sew the strips together end to end with diagonal seams and cut (2) 1 1/2" x 45 1/2" strips.

From the Wavy Bias Stripe - Black (O), cut:

- (2) 5 1/2" x 65 1/2" Length of Fabric (LOF) strips.
- From the remaining fabric cut (2) 5 1/2" x 55 1/2" WOF strips, piece as needed.

From the Stripe - Red (P), cut:

- (7) 2 1/2" x WOF strips for the binding.

From the Starlet - Berry (Q), cut:

- (10) Blades.

From the Stacked Dots - White (Backing), cut:

- (2) 63" x WOF strips for the backing. Sew the strips together and trim to make the 63" x 83" back.

Block Assembly

1. Sew (1) 2" x 42 1/2" Fabric B strip to each side of the 22 1/2" x 42 1/2" Fabric A panel. Sew (1) 2" x 25 1/2" Fabric B strip to the top and to the bottom of the Fabric A panel. **Trim the block to measure 24 1/2" x 44 1/2"** to make (1) Unit 1 rectangle (Fig. 1).

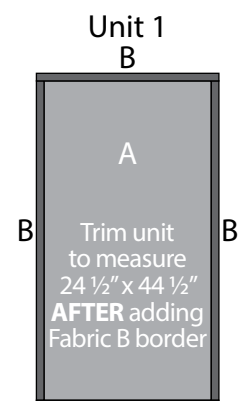


Fig. 1

ORIGINS

Quilt 1

2. Sew (1) 8 1/2" x 44 1/2" Fabric C strip to each side of the Unit 1 rectangle. Sew (1) 8 1/2" x 40 1/2" Fabric C strip to the top and to the bottom of the Unit 1 rectangle to make (1) Unit 2 rectangle (Fig. 2).

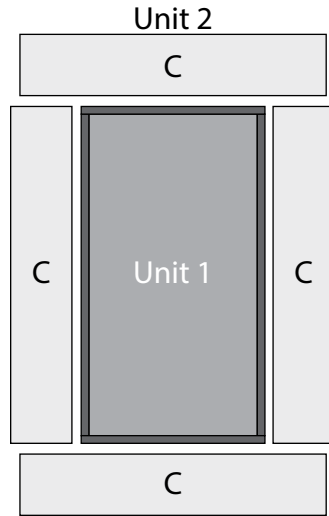


Fig. 2

3. Fold (1) Fabric D blade in half, right sides together (Fig. 3). Sew 1/4" down from the top of the Fabric D strip (Fig. 4). Open the blade and fold the sewn area right side out to make the pointed top to complete (1) Unit 3 blade (Fig. 5). Repeat to make (12) Unit 3 blades total.

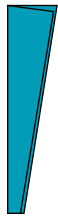


Fig. 3



Fig. 4

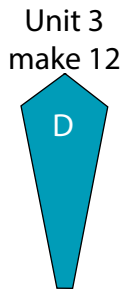


Fig. 5

4. Repeat Step 3 using (4) Fabric E blades, (4) Fabric F blades, (4) Fabric G blades, (12) Fabric H blades, (14) Fabric I blades, (16) Fabric J blades, (8) Fabric K blades, (8) Fabric L blades, (8) Fabric M blades and (10) Fabric Q blades.

5. Sew together (1) Unit 3 blade, (1) Fabric E blade, (1) Fabric F blade, (1) Fabric G blade and (1) Fabric H blade, in that order from right to left, to make (1) Unit 4 segment (Fig. 6). Repeat to make (4) Unit 4 segments total.



Fig. 6



Fig. 7



Fig. 8

6. Repeat Step 5 and refer to Figures 7-8 to make (4) Unit 5 segments and (4) Unit 6 segments.

7. Sew (1) Unit 4 segment, (1) Unit 5 segment and (1) Unit 6 segment together to make (1) Unit 7 segment (Fig. 9). Repeat to make (4) Unit 7 segments total.

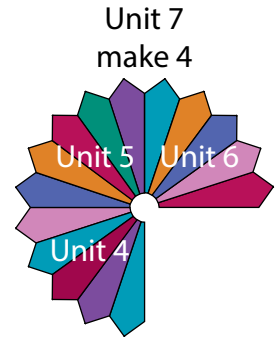


Fig. 9

8. Repeat Step 5 and refer to Figures 10-13 for component identification, placement and orientation to make (2) of each unit for Unit 8 through Unit 11.



Fig. 10



Fig. 11



Fig. 12



Fig. 13

9. Refer to Figure 14 and using your favorite method of applique, sew the assorted blade segments onto the Unit 2 rectangle to make (1) Unit 12 rectangle.

10. Refer to Figure 15 and using your favorite method of applique, sew the (4) Fabric B circles onto the (4) Blade Corner segments to make the Center Block.

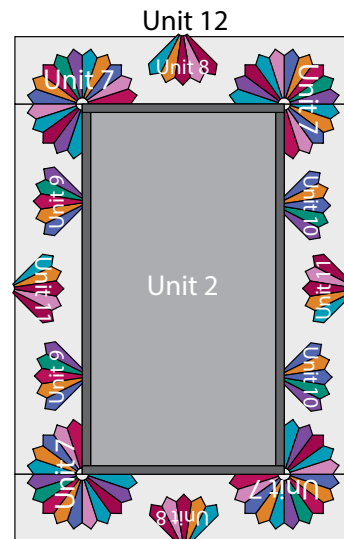


Fig. 14

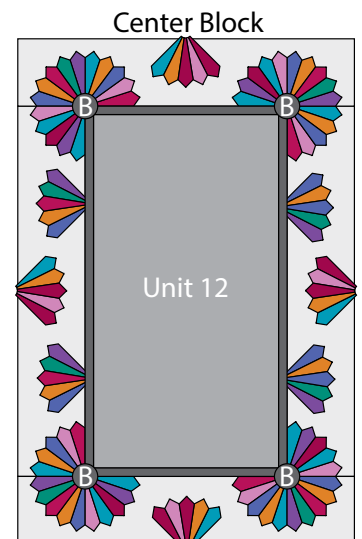


Fig. 15

Quilt Top Assembly

(Follow the Quilt Layout while assembling the quilt top. The arrows in the Quilt Layout represent the fabric print direction. Pay attention to the direction of the fabric.)

12. Sew (1) 2" x 60 1/2" Fabric B strip to each side of the Center Block. Sew (1) 2" x 43 1/2" Fabric B strip to the top and to the bottom of the Center Block.

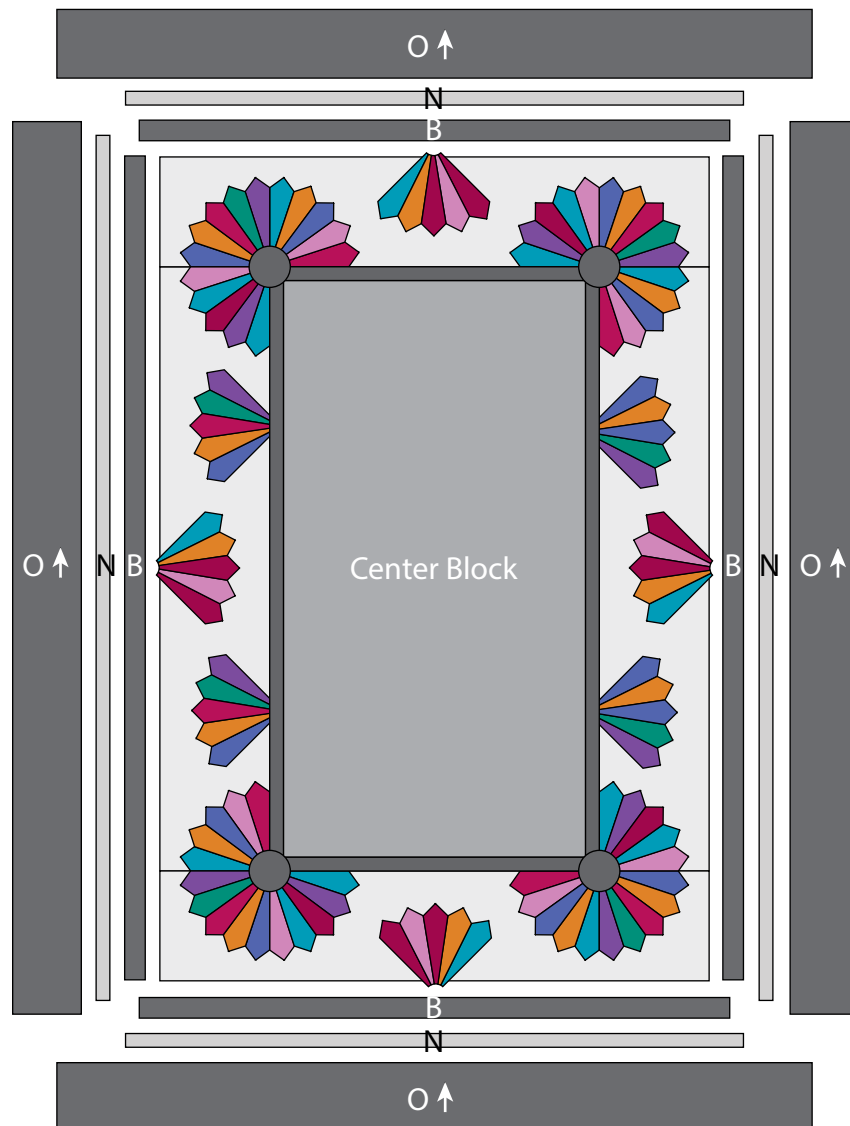
13. Sew (1) 1 1/2" x 63 1/2" Fabric N strip to each side of the Center Block. Sew (1) 1 1/2" x 45 1/2" Fabric N strip to the top and to the bottom of the Center Block.

14. Sew (1) 5 1/2" x 65 1/2" Fabric O strip to each side of the Center Block. Sew (1) 5 1/2" x 55 1/2" Fabric O strip to the top and to the bottom of the Center Block to make the quilt top.

15. Layer and quilt as desired.

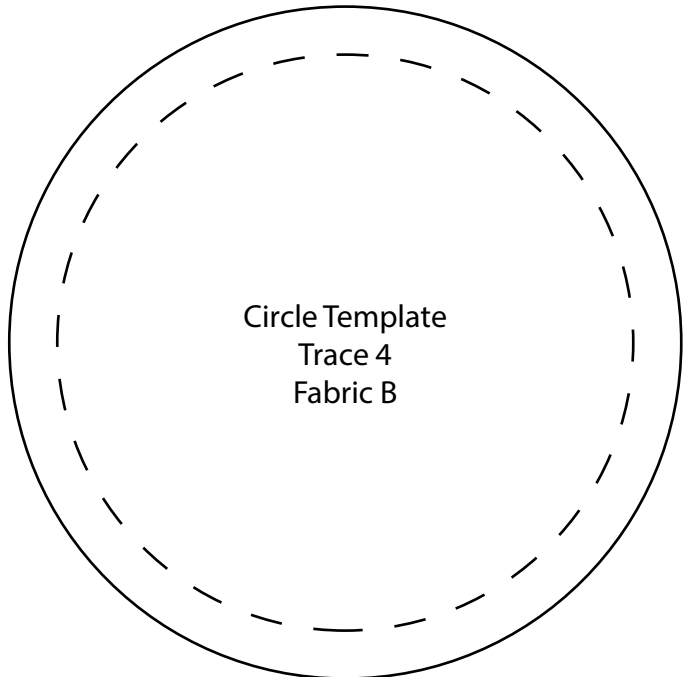
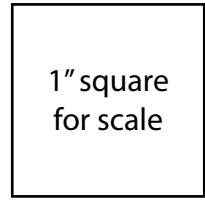
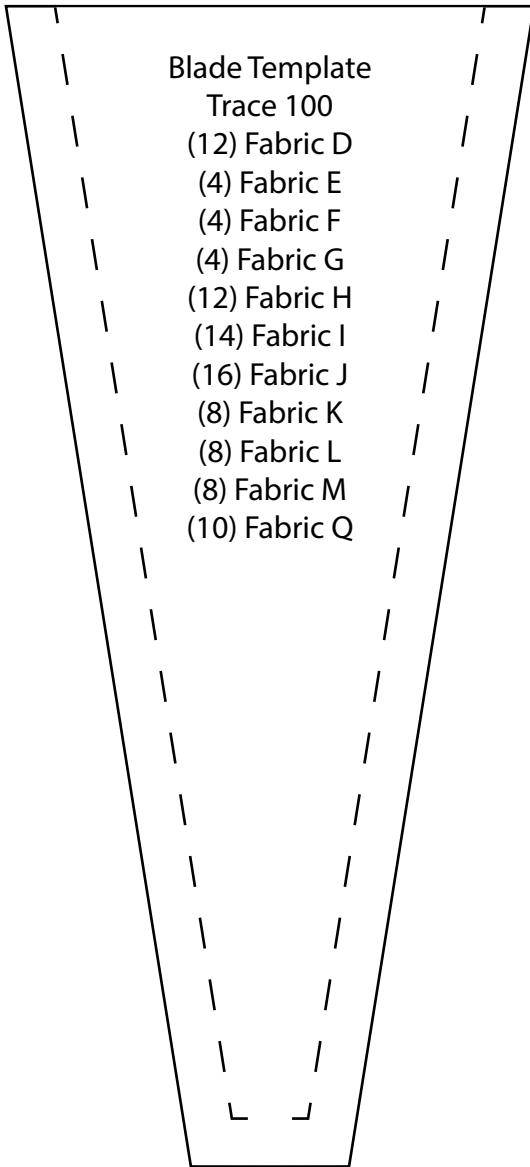
16. Sew the (7) 2 1/2" x WOF Fabric P strips together, end to end with 45-degree seams, to make the binding. Fold this long strip in half lengthwise with wrong sides together and press.

17. Bind as desired.



Quilt Layout

100% Templates



*Every effort has been made to ensure that all projects are error free. All the information is presented in good faith, however no warranty can be given nor results guaranteed as we have no control over the execution of instructions. Therefore, we assume no responsibility for the use of this information or damages that may occur as a result. When errors are brought to our attention, we make every effort to correct and post a revision as soon as possible. Please make sure to check www.blankquilting.net for pattern updates prior to starting the project. We also recommend that you test the project prior to cutting for kits. Finally, all free projects are intended to remain free to you and are **not for resale**.*