

A Free Project Sheet
NOT FOR RESALE

Origins

Quilt 2



Quilt Design by Heidi Pridemore

Skill Level: Advanced Beginner



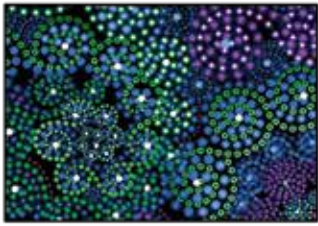
Finished Quilt Size: 52" x 68"
49 West 37th Street, 14th floor, New York, NY 10018
Toll Free: 800-294-9495
fax: 212-679-4578
www.blankquilting.net

Please check our website for pattern updates before starting this project.

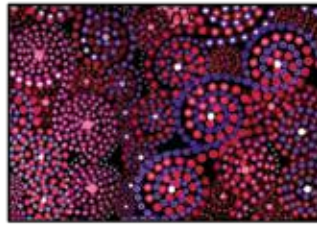
ORIGINS

Quilt 2

Fabrics in the Origins Collection



Large Swirls - Blue/Green
1204-75



Large Swirls - Red/Purple
1204-85



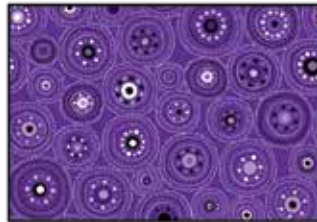
Matchsticks - Blue
1205-70



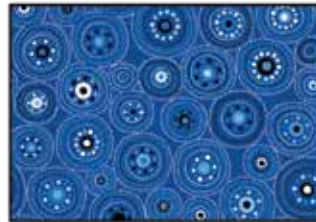
Matchsticks - Red
1205-88



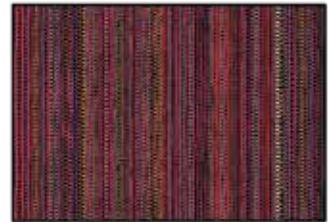
Stacked Dots - White
1206-01



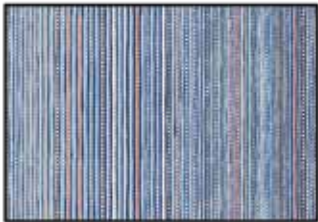
Stacked Dots - Purple
1206-55



Stacked Dots - Blue
1206-77



Stripe - Red
1207-88



Stripe - Gray
1207-90



Spaced Dots - Blue
1208-77



Spaced Dots - Light Gray
1208-90



Wavy Bias Stripe - Blue
1209-77



Wavy Bias Stripe - Black
1209-99



Crane Panel - Light Gray
1203P-90

Select Fabrics from the Starlet, Eclipse & Jot Dot Collections



Starlet
Berry
6383-Berry



Starlet
Purple
6383-Purple



Eclipse
Navy
3955-Navy



Jot Dot
Fuchsia
9570-22



Jot Dot
Orange
9570-33



Jot Dot
Black
9570-99

Materials

1 bundle	Fat Quarter - Origins (A)	Fat Quarter-Origins
2 yards	Eclipse - Navy (B)	3955-Navy
5/8 yard	Stripe - Red (C)	1207-88*
4 1/4 yards	Wavy Bias Stripe - Blue (Backing)	1209-77

*Includes binding

Cutting Instructions

Please note: all strips are cut across the width of fabric (WOF) from selvage to selvage unless otherwise noted.

From the Origins Fat Quarter Bundle (A):

- Select (12) Fat Quarters and from each cut:
 - (8) 4 1/2" squares.
 - (8) 3" squares.

From the Eclipse - Navy (B), cut:

- (11) 4 1/2" x WOF strips. Sub-cut (96) 4 1/2" squares.
- (4) 2 1/2" x WOF strips. Sew the strips together end to end with diagonal seams and cut (2) 2 1/2" x 64 1/2" strips.
- (3) 2 1/2" x WOF strips. Sew the strips together end to end with diagonal seams and cut (2) 2 1/2" x 52 1/2" strips.

From the Stripe - Red (C), cut:

- (6) 2 1/2" x WOF strips for the binding.

From the Wavy Bias Stripe - Blue (Backing), cut:

- (2) 76" x WOF strips for the backing. Sew the strips together and trim to make the 60" x 76" back.

Block Assembly

1. Place (1) 3" Fabric A square on the bottom right corner of (1) 4 1/2" Fabric B square, right sides together (Fig. 1). Sew across the diagonal of the smaller square from the upper right corner to the lower left corner (Fig. 1). Flip open the triangle formed and press. Trim away the excess fabric from behind the triangle 1/4" away from the sewn seam to make (1) Unit 1 square (Fig. 2). Repeat to make (8) Unit 1 squares total.

2. Sew (1) Unit 1 square to the left side of (1) 4 1/2" Fabric A square to make the top row. Sew (1) 4 1/2" Fabric A square to the left side of (1) Unit 1 square to make the bottom row. Sew the (2) rows together lengthwise to make (1) Unit 2 square (Fig. 3). Repeat to make (4) Unit 2 squares total.

3. Repeat Steps 1-2 use the remaining Fabric A squares to make a total of (96) Unit 2 squares.



Fig. 1

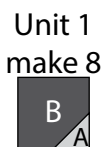


Fig. 2

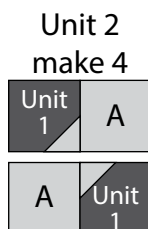


Fig. 3

4. Sew (12) Unit 2 squares together into a 3 x 4 matrix to make (1) Block One rectangle (Fig. 4) Repeat to make a second Block One rectangle.

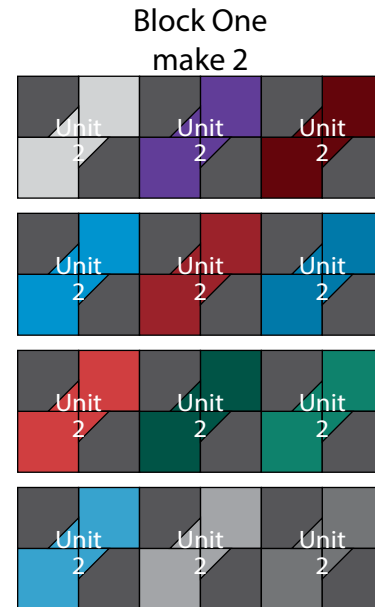


Fig. 4

5. Repeat Step 4 and refer to Figure 5 for component identification, placement and orientation to make (2) Block Two rectangles.



Fig. 5

Quilt Top Assembly

(Follow the Quilt Layout while assembling the quilt top.)

6. Sew (1) Block One rectangle to the left side of (1) Block Two rectangle lengthwise to make Row One. Repeat to make Row Two.

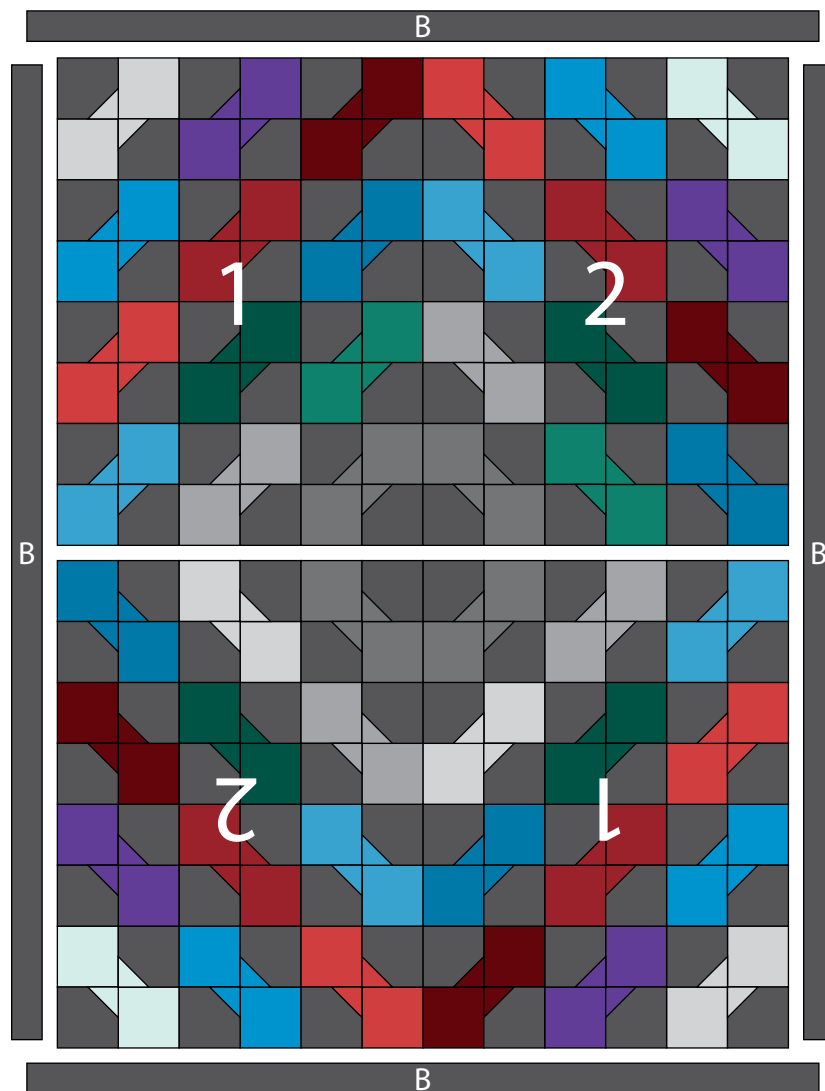
7. Sew the (2) rows together, paying attention to their orientations, to make the Center Block.

8. Sew (1) 2 ½" x 64 ½" Fabric B strip to each side of the Center Block. Sew (1) 2 ½" x 52 ½" Fabric B strip to the top and to the bottom of the Center Block to make the quilt top.

9. Layer and quilt as desired.

10. Sew the (6) 2 ½" x WOF Fabric C strips together, end to end with 45-degree seams, to make the binding. Fold this long strip in half lengthwise with wrong sides together and press.

11. Bind as desired.



Quilt Layout

*Every effort has been made to ensure that all projects are error free. All the information is presented in good faith, however no warranty can be given nor results guaranteed as we have no control over the execution of instructions. Therefore, we assume no responsibility for the use of this information or damages that may occur as a result. When errors are brought to our attention, we make every effort to correct and post a revision as soon as possible. Please make sure to check www.blankquilting.net for pattern updates prior to starting the project. We also recommend that you test the project prior to cutting for kits. Finally, all free projects are intended to remain free to you and are **not for resale**.*