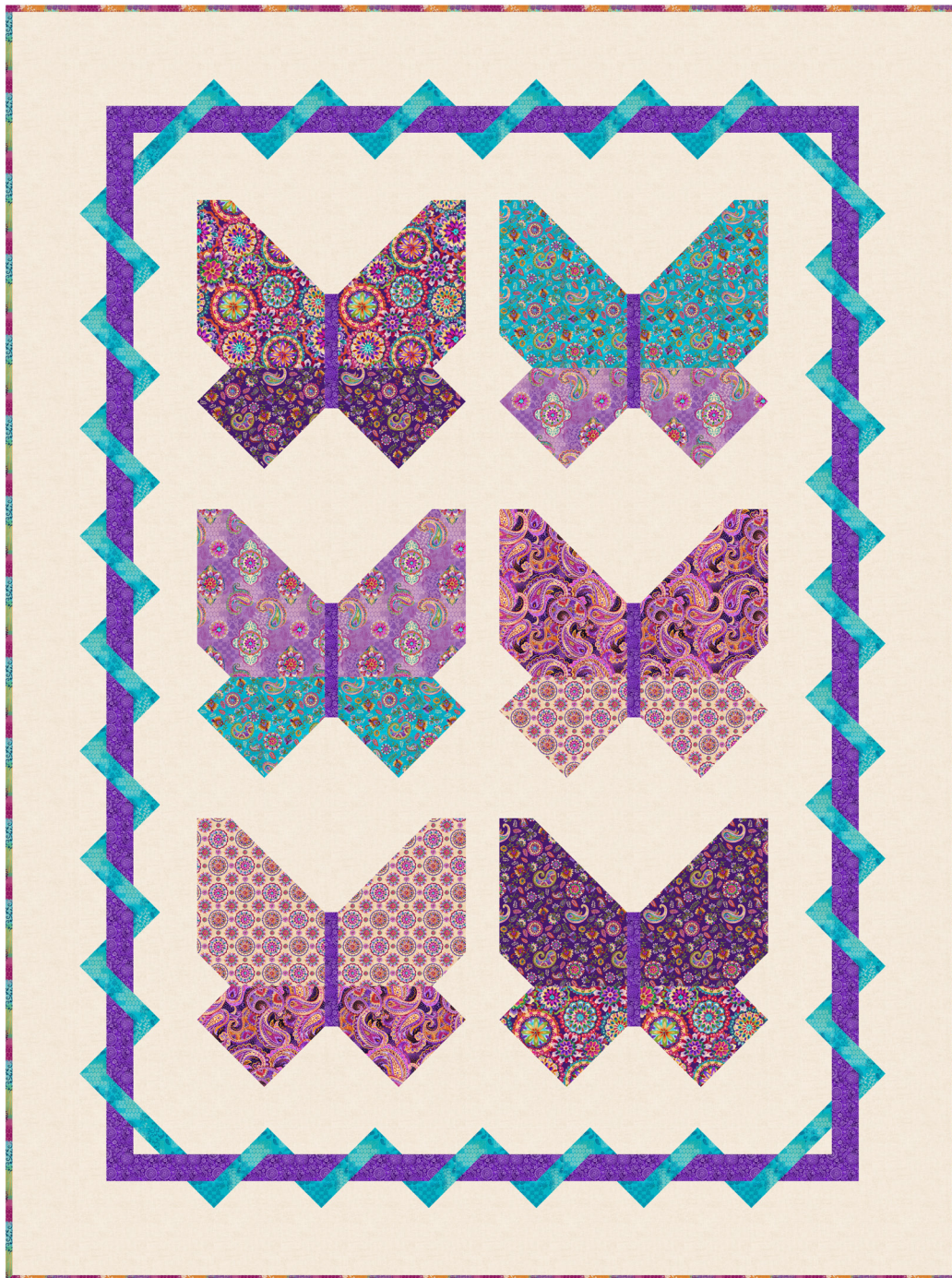




Petra

by Satin Moon Designs



Quilt size: 70" x 94" (1.78m x 2.38m)

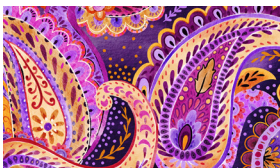
Skill Level: Advanced Beginner

Transitions Quilt

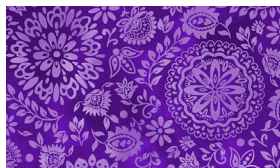
Designed and sold by Miss Winnie Designs/ Hanna Bourque
www.misswinnie.ca

Transitions Quilt Ordering Guide

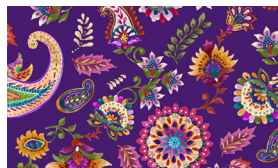
SKU	Yards	Meters	12 Kits	24 Kits
3271-55	1/2 yds	0.46m	1 bolt	1 bolt
3272-55	3/4 yds	0.69m	1 bolt	2 bolts
3273-55	1/2 yds	0.46m	1 bolt	1 bolt
3273-75	1/2 yds	0.46m	1 bolt	1 bolt
3274-75	3/4 yds	0.69m	1 bolt	2 bolts
3275-55	1/2 yds	0.46m	1 bolt	1 bolt
3276-50	1/2 yds	0.46m	1 bolt	1 bolt
3277-33*	3/4 yds	0.69m	1 bolt	2 bolts
3278-41	1/2 yds	0.46m	1 bolt	1 bolt
4509-100	4 3/4 yds	4.34m	4 bolts	8 bolts
Backing Fabric Option				
3274-50	5 2/3 yds	5.18m	5 bolts	10 bolts
<p>* Indicates binding fabric. FQ = 18" x 22" (0.45m x 0.55m) All fabric quantities are based on 15yd bolts unless otherwise indicated.</p>				



3271-55
Paisley



3272-55
Mini Medallion



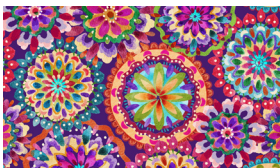
3273-55
Paisley with Medallion



3273-75
Paisley with Medallion



3274-75
Tonal Patchwork



3275-55
Medallions



3276-50
Paisley with Medallion on
Tonal Patchwork



3277-33
Patchwork with Medallions



3278-41
Medallions



4509-100
Melange
Cream