

# Spirals (Metallic)

Quilt design by Denise Russell.



Quilt size: 47" x 60-1/2"

Skill Level: Beginner

**Blank Quilting Corporation**  
49 West 37th Street ♦ New York, NY 10018  
Tel: 800-294-9495 ♦ Fax: 212-679-4578  
[www.blankquilting.net](http://www.blankquilting.net)

facebook

Free Project  
NOT FOR RESALE



# *Spirals (Metallic)* - Fabrics in the Collection



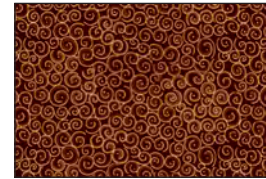
M9994-01  
White/Silver



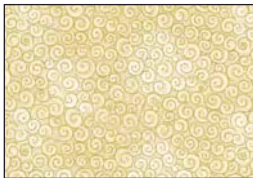
M9994-03  
White/Gold



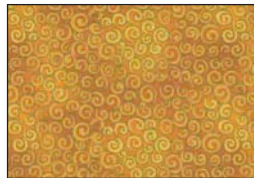
M9994-22  
Pink



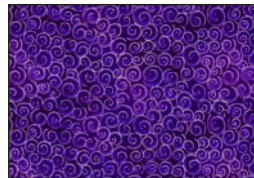
M9994-39  
Brown



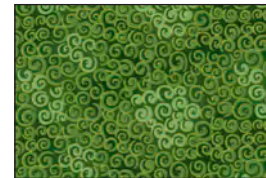
M9994-41  
Ivory



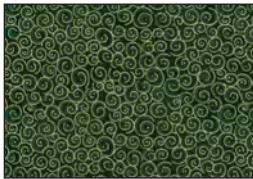
M9994-44  
Maize



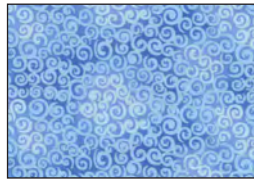
M9994-55  
Purple



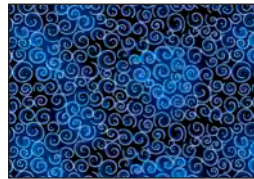
M9994-62  
Med. Green



M9994-66  
Hunter



M9994-70  
Cloud



M9994-77  
Navy



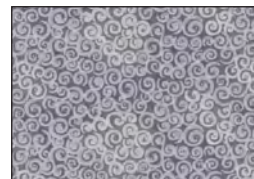
M9994-80  
Coral



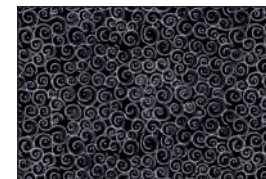
M9994-88  
Red



M9994-90  
Lt. Gray



M9994-95  
Storm



M9994-99  
Black

Selected fabrics from the JotDot collection



9570-09  
Marshmallow



9570-99  
Black

# Spirals (Metallic) - Quilt 1

Page 1

## Materials

*Yardages and cutting instructions are based on 42" of usable fabric width.*

1 Spirals (Metallic) Fat Quarter Bundle  
 5/8 yard 9570-99 JotDot Black  
 1-7/8 yards 9570-09 JotDot Marshmallow  
 3-1/8 yards M9994-70 Cloud for backing  
 55" x 70" piece of Air Lite batting

## Cut Fabrics

**Note:** All strips are cut across the width of the fabric (WOF) from selvage to selvage unless otherwise noted. If cut across the length of the fabric (LOF), the **LOF** notation will be indicated.

## From Fat Quarter bundle:

\*Refer to the table 1 below for the cutting instructions for each fat quarter.

Fat Quarter Color	Number and size of patches to cut
M9994-01 White/Silver	(12) 3-7/8" squares
M9994-03 White/Gold	(10) 3-7/8" squares
M9994-22 Pink	(12) 2-1/2" squares (4) 3-7/8" squares
M9994-39 Brown M9994-44 Maize M9994-66 Hunter M9994-77 Navy M9994-95 Storm	(12) 2-1/2" squares (2) 3-7/8" squares
M9994-41 Ivory M9994-55 Purple M9994-62 Med. Green M9994-88 Red	(24) 2-1/2" squares (2) 3-7/8" squares
M9994-70 Cloud	(36) 2-1/2" squares (2) 3-7/8" squares
M9994-80 Coral	(24) 2-1/2" squares
M9994-90 Lt. Gray	(12) 2-1/2" squares
M9994-99 Black	(20) 2" squares (cornerstones)

Table 1 – Fat quarter cutting instructions.

## From 9570-99 JotDot Black:

\*Cut six 2-1/2" x WOF strips for binding.

## From 9570-09 JotDot Marshmallow:

\*Cut one 3-7/8" x WOF strip. Sub-cut two 3-7/8" squares.  
 \*Cut one 6-1/2" x WOF strip. Sub-cut twenty-four 1-1/2" x 6-1/2" strips.  
 \*Cut one 8-1/2" x WOF strip. Sub-cut twenty-four 1-1/2" x 8-1/2" strips.  
 \*Cut two 12-1/2" x WOF strips. Sub-cut thirty-one 2" x 12-1/2" strips.  
 \*Cut five 3" x WOF strips for the border.

## Assemble Blocks

**Note:** Measurements include 1/4" seam allowances. Sew with right sides together unless otherwise stated. If no direction is specified, press seams toward the darker fabric.

1. Draw a diagonal line on the wrong side of the 3-7/8" M9994-01 White/Silver, M9994-03 White/Gold, and 9570-09 JotDot Marshmallow squares. With right sides together, layer the marked squares atop the colored 3-7/8" squares (refer to Table 2 for colorways). Stitch 1/4" on each side of the marked line, cut on the drawn line, press each unit open with seams toward dark fabric, and trim dog ears. Make a total of forty-eight 3-1/2" half-square triangles (HST) of assorted colors. Sew two HST of the same color together, then sew two strips of the same color together to form the twelve 6-1/2" pinwheel block centers (one pinwheel of each color, except for the Pink - two pinwheels). Press the seams open (*figure 1*).

Neutral fabric	Pair with
M9994-01 White/Silver	Pink, Purple, Cloud, Storm, and Navy
M9994-03 White/Gold	Maize, Med. Green, Red, Hunter, and Brown
9570-09 JotDot Marshmallow	Ivory

Table 2. Half-square triangle colorways.

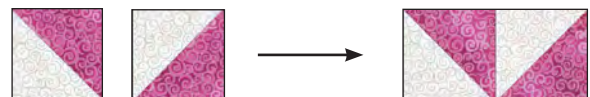




Figure 1 – Make 12 of assorted colors.

2. Sew a 9570-09 JotDot Marshmallow 1-1/2" x 6-1/2" strip to opposite sides of the step 1 pinwheels. Press the seams toward strips. In the same manner, sew a Marshmallow 1-1/2" x 8-1/2" strip to the top and another to the bottom of the pinwheels (*figure 2*). Make a total of twelve 8-1/2" block centers.

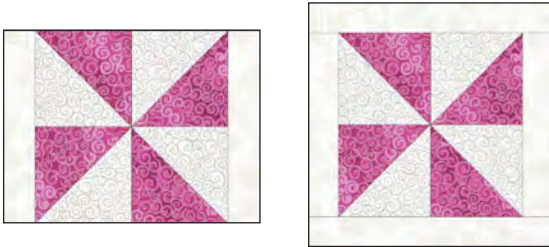


Figure 2

3. Sew the 2-1/2" squares in the colors and order listed below to make the twelve right side and twelve left side strips for the blocks (*figure 3*). Press the seams in one direction. Sew the strips to the step 2 block centers as indicated.



Right side: Red, Cloud, Light Gray, Med. Green



Left side: Ivory, Storm, Coral, Brown



Figure 3

4. Repeat step 3 to make the twelve top and bottom strips for the blocks. Sew them to the step 3 units as indicated to complete twelve 12-1/2" blocks (*figure 4*).



Top strip: Pink, Med. Green, Red, Cloud, Ivory, Purple



Bottom strip: Purple, Hunter, Cloud, Coral, Maize, and Navy



Figure 4

## Assemble Quilt Top

5. Referring to the quilt photo for block placement, lay out three blocks and the 2" x 12-1/2" 9570-09 JotDot Marshmallow sashing strips in four rows, and join the blocks and sashing strips together in each row. Press the seams toward the blocks.

6. To make the horizontal sashing rows, alternatively sew together four 2" M9994-99 Black cornerstones and three 2" x 12-1/2" 9570-09 JotDot Marshmallow sashing strips. Repeat to make a total of five sashing strips. Press the seams toward the cornerstones.

7. Matching adjacent seams, sew the horizontal sashing strips and the block rows together. Press the seams in one direction.

8. For the border, sew five 3" 9570-09 JotDot Marshmallow border strips together end to end using diagonal seams. Measure the vertical length of the quilt top through the center and cut two border strips that length. Sew one strip to each side of the quilt top. Measure the width of the quilt top through the center. Cut two border strips that length and sew one to the



# Spirals (Metallic) - Quilt 1

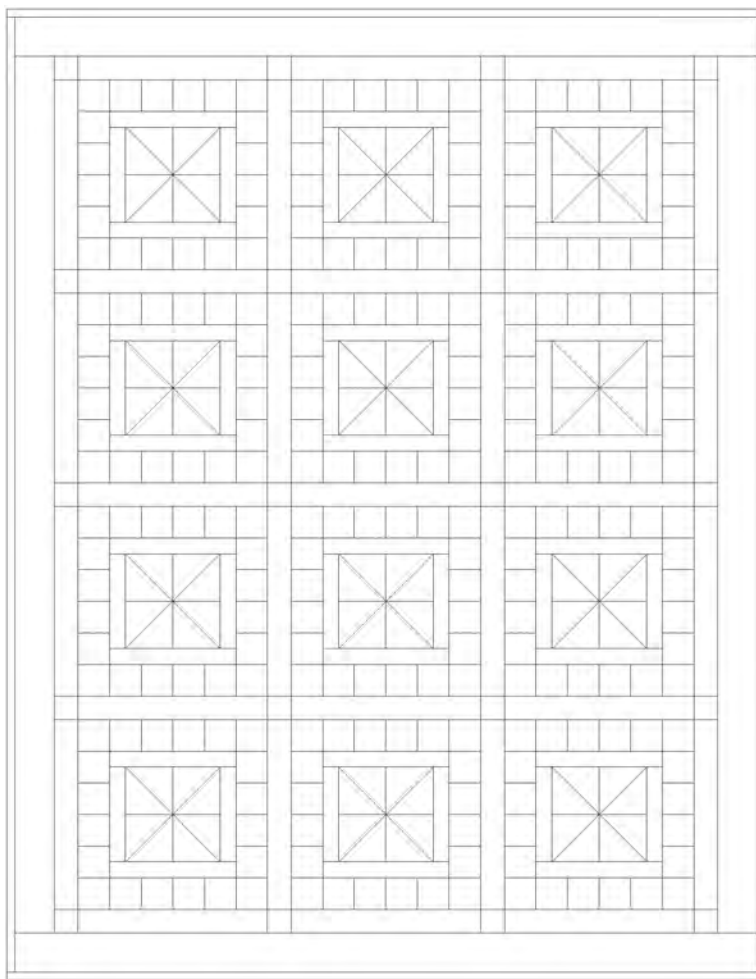
Page 3

top and one to the bottom. Press the seams toward the borders.

## Finishing

9. Create a quilt sandwich with the batting between the quilt top and the backing. Pin or baste layers together, mark quilting design, and quilt by hand or machine. When quilting is complete, remove pins or basting and trim batting and backing even with raw edges of the quilt top.

10. Join the six 2-1/2" 9570-99 JotDot Black binding strips together end to end using a diagonal seam to make one long strip. Fold in half lengthwise and press. Sew binding to the edges of the quilt, mitering corners, and overlapping ends. Fold binding to the back of the quilt and stitch it in place by hand to finish.



Quilt Diagram

©2019 Blank Quilting Corporation

*Every effort has been made to ensure that all projects are error free. All the information is presented in good faith; however, no warranty can be given nor results guaranteed as we have no control over the execution of instructions. Therefore, we assume no responsibility for the use of this information or damages that may occur as a result. When errors are brought to our attention, we make every effort to correct and post a revision as soon as possible. Please make sure to check [www.blankquilting.net](http://www.blankquilting.net) for pattern updates prior to starting the project. We also recommend that you test the project prior to cutting for kits. Finally, all free projects are intended to remain free to you and are not for resale.*